

Cancer in Central and South America

GUATEMALA

This country profile for the Cancer in Central and South America project provides, for each participating cancer registry tables and graphics showing numbers of cases and rates by year, sex and age group for major sites of cancer together with a population pyramid. A country summary is also provided based on aggregated registry data and national mortality data from the WHO mortality database:

(http://www.who.int/healthinfo/statistics/mortality_rawdata/en/index.html)

Citation of any of these data should be in the following format:

“Sierra MS, Abriata MG, Barrios E, Bravo LE, Cueva P, Fernandez L, Pineros M, Rebelo M, de Vries E, Forman D. Editors on behalf of the Cancer in Central and South America Working Group (2016). Cancer in Central and South America. Lyon: International Agency for Research on Cancer. Available from: http://www-dep.iarc.fr/CSU_resources.htm accessed [date].”

Registry Summary Tables and Figures

**GUATEMALA, REGISTRO DE CANCER DEL INCAN
(1995-1997)**

Registry Director*: Dr Mynor R. Villeda E.

Registry Staff*: Carlos A. Waldheim C.

*Director and staff as notified at time of call for data in 2013. Current contact information for cancer registries in the region can be found at: http://www.iacr.com.fr/index.php?option=com_comprofiler&task=usersList&listid=5.

GUATEMALA (1995-1997)
Hospital Base: Case Series

SITE	MALES					FEMALES							
	ALL CASES	%	UNK AGE	MV (%)	DCO (%)	Rank#	ALL CASES	%	UNK AGE	MV (%)	DCO (%)	Rank#	ICD10
Lip, oral cavity, and pharynx (C00-14)	51	5.4	0	100	0	5	30	1.4	0	100	0	12.5	C00-14
Oesophagus (C15)	26	2.8	0	96	0	12	21	1.0	0	90	0	16	C15
Stomach (C16)	102	10.9	0	94	0	1	90	4.2	0	91	0	3	C16
Colon (C18)	26	2.8	0	88	0		30	1.4	0	87	0		C18
Rectum (C19-20)	11	1.2	0	91	0		21	1.0	0	100	0		C19-20
Colorectal (C18-20)	37	4.0	0	89	0	8	51	2.4	0	92	0	7	C18-20
Anus (C21)	4	0.4	0	100	0	25.5	5	0.2	0	80	0	25	C21
Colon, rectum and anus (C18-21)	41	4.4	0	90	0		56	2.6	0	91	0		C18-21
Liver (C22)	21	2.2	0	95	0	14.5	30	1.4	0	60	0	12.5	C22
Gallbladder (C23-24)	11	1.2	0	100	0	20	40	1.8	0	98	0	11	C23-24
Pancreas (C25)	17	1.8	0	76	0	18	13	0.6	0	85	0	20	C25
Nose, sinuses (C30-31)	6	0.6	0	100	0	23	10	0.5	0	90	0	21.5	C30-31
Larynx (C32)	35	3.7	0	97	0	9.5	10	0.5	0	100	0	21.5	C32
Lung, trachea and bronchus (C33-34)	39	4.2	0	95	0	7	25	1.2	0	96	0	14.5	C33-34
Melanoma of skin (C43)	21	2.2	0	100	0	14.5	17	0.8	0	100	0	19	C43
Kaposi sarcoma (C46)	5	0.5	0	100	0	24	1	0.0	0	100	0	26	C46
Breast (C50)	4	0.4	0	100	0	25.5	332	15.3	0	98	0	2	C50
Cervix uteri (C53)							791	36.5	0	99	0	1	C53
Corpus uteri (C54)							41	1.9	0	100	0	10	C54
Ovary (C56)							81	3.7	0	91	0	5	C56
Penis (C60)	14	1.5	0	100	0	19							C60
Prostate (C61)	82	8.8	0	88	0	2							C61
Testis (C62)	46	4.9	0	98	0	6							C62
Kidney (C64)	19	2.0	0	100	0	16.5	18	0.8	0	89	0	18	C64
Bladder (C67)	19	2.0	0	100	0	16.5	7	0.3	0	100	0	23.5	C67
Brain, CNS (C70-72)	32	3.4	0	100	0	11	25	1.2	0	100	0	14.5	C70-72
Thyroid (C73)	7	0.7	0	100	0	22	50	2.3	0	100	0	8	C73
Hodgkin disease (C81)	23	2.5	0	96	0	13	19	0.9	0	95	0	17	C81
Non-Hodgkin lymphoma (C82-85,C96)	61	6.5	0	100	0	3	56	2.6	0	96	0	6	C82-85,C96
Multiple myeloma (C88+C90)	8	0.9	0	63	0	21	7	0.3	0	86	0	23.5	C88+C90
Lymphoid leukaemia (C91)	18	1.9	0	94	0		27	1.2	0	96	0		C91
Myeloid leukaemia (C92-94)	14	1.5	0	100	0		15	0.7	0	100	0		C92-94
Leukaemia unspecified (C95)	3	0.3	0	67	0		1	0.0	0	100	0		C95
Leukaemia (C91-95)	35	3.7	0	94	0	9.5	43	2.0	0	98	0	9	C91-95
Other and unspecified (O&U)	60	6.4	0	87	0	4	84	3.9	0	87	0	4	O&U
All sites but C44 (ALLC44)	828	88.5	0	95	0		2000	92.3	0	96	0		ALLC44
All sites (ALL)	936	100.0	0	95	0		2166	100.0	0	96	0		ALL

UNK, Unknown; MV, Microscopic Verification; DCO, Death Certificate Only
#Rank based on highest number of cases excluding: All sites but C44 and All sites

Country's Summary Tables and Figures

GUATEMALA^{1,2,3} **(2003-2007²)**

¹ Country's incidence rates were not estimated. Case series are presented using data from the Registro de Cancer del INCAN, Guatemala

² National mortality data obtained from the WHO mortality database:
http://www.who.int/healthinfo/statistics/mortality_rawdata/en/index.html

³ Methodological details are included in "Cancer in Central and South America: Methodology"
<http://dx.doi.org/10.1016/j.canep.2016.07.020>

GUATEMALA (2003-2007)
Number of Deaths in Major Diagnosis Groups
per Calendar Year

SITE	YEAR					TOTAL n (%)
	2003 n (%)	2004 n (%)	2005 n (%)	2006 n (%)	2007 n (%)	
MALES						
Lip, oral cavity, and pharynx (C00-C14)	74 (2.8)	107 (3.7)	60 (2.0)	80 (2.6)	73 (2.4)	394 (2.7)
Digestive organs (C15-C26)	902 (33.7)	955 (33.2)	1478 (49.9)	1560 (51.3)	1488 (48.0)	6383 (43.5)
Respiratory organs (C30-C39)	245 (9.1)	244 (8.5)	266 (9.0)	241 (7.9)	275 (8.9)	1271 (8.7)
Bone, cartilage, and skin (C40-C44)	1 (0.0)	1 (0.0)	35 (1.2)	31 (1.0)	27 (0.9)	95 (0.6)
Male genitalia (C60-C63)	347 (13.0)	383 (13.3)	449 (15.2)	430 (14.1)	486 (15.7)	2095 (14.3)
Urinary organs (C64-C68)	16 (0.6)	12 (0.4)	46 (1.6)	54 (1.8)	59 (1.9)	187 (1.3)
Eye, brain, and thyroid (C69-C75)	113 (4.2)	135 (4.7)	89 (3.0)	106 (3.5)	139 (4.5)	582 (4.0)
Hematopoietic (C81-C96)	215 (8.0)	237 (8.2)	234 (7.9)	250 (8.2)	258 (8.3)	1194 (8.1)
All sites	2678 (100.0)	2879 (100.0)	2962 (100.0)	3039 (100.0)	3099 (100.0)	14657 (100.0)
FEMALES						
Lip, oral cavity, and pharynx (C00-C14)	57 (1.7)	51 (1.5)	45 (1.3)	57 (1.6)	44 (1.2)	254 (1.5)
Digestive organs (C15-C26)	1087 (33.0)	1109 (32.3)	1578 (46.9)	1675 (45.6)	1715 (46.7)	7164 (41.1)
Respiratory organs (C30-C39)	164 (5.0)	185 (5.4)	192 (5.7)	171 (4.7)	182 (5.0)	894 (5.1)
Bone, cartilage, and skin (C40-C44)	2 (0.1)	1 (0.0)	20 (0.6)	17 (0.5)	19 (0.5)	59 (0.3)
Breast (C50)	139 (4.2)	170 (5.0)	166 (4.9)	190 (5.2)	140 (3.8)	805 (4.6)
Female genitalia (C51-C58)	578 (17.5)	628 (18.3)	642 (19.1)	708 (19.3)	720 (19.6)	3276 (18.8)
Urinary organs (C64-C68)	3 (0.1)	10 (0.3)	36 (1.1)	57 (1.6)	47 (1.3)	153 (0.9)
Eye, brain, and thyroid (C69-C75)	131 (4.0)	116 (3.4)	95 (2.8)	146 (4.0)	139 (3.8)	627 (3.6)
Hematopoietic (C81-C96)	172 (5.2)	183 (5.3)	219 (6.5)	240 (6.5)	244 (6.6)	1058 (6.1)
All sites	3294 (100.0)	3434 (100.0)	3362 (100.0)	3675 (100.0)	3670 (100.0)	17435 (100.0)
BOTH SEXES						
Lip, oral cavity, and pharynx (C00-C14)	131 (2.2)	158 (2.5)	105 (1.7)	137 (2.0)	117 (1.7)	648 (2.0)
Digestive organs (C15-C26)	1989 (33.3)	2064 (32.7)	3056 (48.3)	3235 (48.2)	3203 (47.3)	13547 (42.2)
Respiratory organs (C30-C39)	409 (6.8)	429 (6.8)	458 (7.2)	412 (6.1)	457 (6.8)	2165 (6.7)
Bone, cartilage, and skin (C40-C44)	3 (0.1)	2 (0.0)	55 (0.9)	48 (0.7)	46 (0.7)	154 (0.5)
Urinary organs (C64-C68)	19 (0.3)	22 (0.3)	82 (1.3)	111 (1.7)	106 (1.6)	340 (1.1)
Eye, brain, and thyroid (C69-C75)	244 (4.1)	251 (4.0)	184 (2.9)	252 (3.8)	278 (4.1)	1209 (3.8)
Hematopoietic (C81-C96)	387 (6.5)	420 (6.7)	453 (7.2)	490 (7.3)	502 (7.4)	2252 (7.0)
All sites	5972 (100.0)	6313 (100.0)	6324 (100.0)	6714 (100.0)	6769 (100.0)	32092 (100.0)

GUATEMALA (2003-2007)
Age Standardized Mortality Rate (World Population) per 100,000
in Major Diagnosis Groups per Calendar Year

SITE	YEAR					TOTAL ASMR (%)
	2003 ASMR (%)	2004 ASMR (%)	2005 ASMR (%)	2006 ASMR (%)	2007 ASMR (%)	
MALES						
Lip, oral cavity, and pharynx (C00-C14)	2.2 (3.0)	3.0 (3.9)	1.6 (2.1)	2.0 (2.7)	1.8 (2.4)	2.1 (2.8)
Digestive organs (C15-C26)	25.8 (35.0)	26.5 (34.6)	40.0 (52.2)	40.9 (53.7)	37.7 (50.1)	34.4 (45.5)
Respiratory organs (C30-C39)	6.9 (9.3)	6.6 (8.6)	7.1 (9.2)	6.2 (8.2)	7.0 (9.3)	6.7 (8.9)
Bone, cartilage, and skin (C40-C44)	0.0 (0.0)	0.0 (0.0)	0.9 (1.2)	0.7 (1.0)	0.7 (0.9)	0.5 (0.6)
Male genitalia (C60-C63)	9.8 (13.3)	10.3 (13.5)	11.6 (15.2)	10.7 (14.0)	11.8 (15.7)	10.9 (14.4)
Urinary organs (C64-C68)	0.5 (0.6)	0.3 (0.4)	1.2 (1.6)	1.4 (1.8)	1.5 (1.9)	1.0 (1.3)
Eye, brain, and thyroid (C69-C75)	2.7 (3.6)	3.2 (4.2)	2.0 (2.6)	2.5 (3.3)	3.1 (4.1)	2.7 (3.5)
Hematopoietic (C81-C96)	4.6 (6.2)	5.0 (6.5)	4.7 (6.1)	4.9 (6.4)	5.0 (6.7)	4.8 (6.4)
All sites	73.8 (100.0)	76.7 (100.0)	76.5 (100.0)	76.1 (100.0)	75.2 (100.0)	75.7 (100.0)
FEMALES						
Lip, oral cavity, and pharynx (C00-C14)	1.4 (1.7)	1.2 (1.5)	1.1 (1.4)	1.3 (1.5)	1.0 (1.2)	1.2 (1.5)
Digestive organs (C15-C26)	27.9 (33.7)	27.2 (32.7)	37.6 (47.9)	38.6 (46.3)	38.1 (47.2)	34.1 (41.8)
Respiratory organs (C30-C39)	4.1 (4.9)	4.4 (5.3)	4.5 (5.8)	3.9 (4.7)	3.9 (4.9)	4.2 (5.1)
Bone, cartilage, and skin (C40-C44)	0.1 (0.1)	0.0 (0.0)	0.4 (0.6)	0.4 (0.4)	0.4 (0.5)	0.3 (0.3)
Breast (C50)	3.5 (4.3)	4.3 (5.2)	4.0 (5.1)	4.6 (5.5)	3.2 (4.0)	3.9 (4.8)
Female genitalia (C51-C58)	14.9 (18.0)	15.7 (18.9)	15.4 (19.7)	16.5 (19.8)	16.6 (20.5)	15.9 (19.4)
Urinary organs (C64-C68)	0.1 (0.1)	0.2 (0.3)	0.9 (1.1)	1.3 (1.6)	1.0 (1.2)	0.7 (0.9)
Eye, brain, and thyroid (C69-C75)	3.0 (3.6)	2.4 (2.9)	2.1 (2.6)	3.0 (3.7)	2.7 (3.4)	2.6 (3.2)
Hematopoietic (C81-C96)	3.5 (4.2)	3.5 (4.3)	4.0 (5.1)	4.4 (5.3)	4.4 (5.5)	4.0 (4.9)
All sites	82.9 (100.0)	83.2 (100.0)	78.6 (100.0)	83.3 (100.0)	80.7 (100.0)	81.7 (100.0)
BOTH SEXES						
Lip, oral cavity, and pharynx (C00-C14)	1.8 (2.3)	2.0 (2.6)	1.3 (1.7)	1.6 (2.0)	1.3 (1.7)	1.6 (2.0)
Digestive organs (C15-C26)	26.8 (34.3)	26.8 (33.6)	38.7 (50.0)	39.6 (49.7)	37.9 (48.6)	34.2 (43.5)
Respiratory organs (C30-C39)	5.4 (6.9)	5.4 (6.8)	5.7 (7.4)	5.0 (6.2)	5.4 (6.9)	5.4 (6.8)
Bone, cartilage, and skin (C40-C44)	0.0 (0.1)	0.0 (0.0)	0.7 (0.9)	0.5 (0.7)	0.5 (0.7)	0.4 (0.5)
Urinary organs (C64-C68)	0.3 (0.3)	0.3 (0.3)	1.0 (1.3)	1.3 (1.7)	1.2 (1.6)	0.8 (1.1)
Eye, brain, and thyroid (C69-C75)	2.8 (3.6)	2.8 (3.5)	2.0 (2.6)	2.8 (3.5)	2.9 (3.7)	2.7 (3.4)
Hematopoietic (C81-C96)	4.0 (5.1)	4.2 (5.3)	4.3 (5.6)	4.6 (5.8)	4.7 (6.0)	4.4 (5.6)
All sites	78.3 (100.0)	79.8 (100.0)	77.3 (100.0)	79.6 (100.0)	78.0 (100.0)	78.6 (100.0)

GUATEMALA (2003-2007)
Mortality per 100,000 by Age Group (years)
Males

SITE	ALL DEATHS	UNK AGE	0-4	5-9	10-14	15-19	20-24	25-29	30-34	35-39	40-44	45-49	50-54	55-59	60-64	65-69	70-74	75+	CRUDE RATE	ASMR (W)	CUM. RATE (0-74)†	Rank‡	ICD10
Lip, oral cavity, & pharynx (C00-14)	394	0	0.1	0.1	0.1	0.0	0.1	0.4	0.6	0.7	1.6	2.4	2.7	4.8	6.6	10.4	9.7	31.3	1.3	2.1	0.2	7	C00-14
Oesophagus (C15)	282	0	0.0	0.0	0.0	0.0	0.0	0.0	0.1	0.4	0.5	1.4	2.2	3.5	4.1	10.8	13.8	19.6	0.9	1.6	0.2	9	C15
Stomach (C16)	3234	0	0.2	0.1	0.2	0.5	1.6	2.4	4.4	6.4	9.9	13.0	24.1	36.3	54.1	84.4	118.7	260.8	10.4	17.4	1.8	1	C16
Colon (C18)	405	0	0.0	0.0	0.0	0.1	0.2	0.3	0.9	0.9	1.4	2.4	2.5	5.5	6.0	9.3	15.7	29.6	1.3	2.2	0.2	1	C18
Rectum (C19-C20)	0	0	0.0	0.0	0.0	0.0	0.0	0.0	0.0	0.0	0.0	0.0	0.0	0.0	0.0	0.0	0.0	0.0	0.0	0.0	0.0	0.0	C19-C20
Colorectal (C18-20)	0	0	0.0	0.0	0.0	0.0	0.0	0.0	0.0	0.0	0.0	0.0	0.0	0.0	0.0	0.0	0.0	0.0	0.0	0.0	0.0	23	C18-20
Rectum and anus (C19-21)	59	0	0.0	0.0	0.0	0.0	0.0	0.3	0.0	0.1	0.2	0.2	0.6	0.8	1.4	0.8	2.2	3.7	0.2	0.3	0.0	0.0	C19-21
Colon, rectum and anus (C18-21)	464	0	0.0	0.0	0.0	0.1	0.2	0.6	0.9	1.0	1.6	2.6	3.1	6.3	7.4	10.1	17.9	33.3	1.5	2.5	0.3	0.3	C18-21
Liver (C22)	1393	0	0.2	0.1	0.2	0.3	0.6	0.8	2.4	2.6	4.8	7.5	8.5	19.2	30.0	35.9	50.2	92.3	4.5	7.5	0.8	3	C22
Gallbladder (C23-24)	153	0	0.0	0.0	0.0	0.1	0.0	0.1	0.1	0.1	0.4	0.5	1.0	1.6	2.6	3.0	6.9	14.7	0.5	0.8	0.1	10	C23-24
Pancreas (C25)	325	0	0.0	0.0	0.0	0.1	0.1	0.0	0.3	0.1	0.9	1.8	2.9	5.2	5.7	7.6	15.5	22.3	1.0	1.8	0.2	8	C25
Nose, sinuses (C30-31)	0	0	0.0	0.0	0.0	0.0	0.0	0.0	0.0	0.0	0.0	0.0	0.0	0.0	0.0	0.0	0.0	0.0	0.0	0.0	0.0	23	C30-31
Larynx (C32)	146	0	0.0	0.0	0.0	0.0	0.1	0.1	0.1	0.1	0.3	0.1	1.1	1.6	2.9	5.7	5.8	10.8	0.5	0.8	0.1	11	C32
Lung, trachea and bronchus (C33-34)	1125	0	0.3	0.1	0.1	0.3	0.7	1.0	1.7	1.5	3.0	4.5	5.6	13.2	20.2	27.1	39.7	92.8	3.6	5.9	0.6	4	C33-34
Melanoma of skin (C43)	95	0	0.0	0.0	0.0	0.0	0.0	0.1	0.2	0.4	0.1	0.2	0.7	1.1	0.7	1.9	3.3	9.6	0.3	0.5	0.0	14	C43
Mesothelioma (C45)	3	0	0.0	0.0	0.0	0.0	0.0	0.0	0.0	0.0	0.0	0.0	0.0	0.1	0.2	0.0	0.0	0.2	0.0	0.0	0.0	20	C45
Kaposi sarcoma (C46)	0	0	0.0	0.0	0.0	0.0	0.0	0.0	0.0	0.0	0.0	0.0	0.0	0.0	0.0	0.0	0.0	0.0	0.0	0.0	0.0	23	C46
Breast (C50)	0	0	0.0	0.0	0.0	0.0	0.0	0.0	0.0	0.0	0.0	0.0	0.0	0.0	0.0	0.0	0.0	0.0	0.0	0.0	0.0	23	C50
Penis (C60)	0	0	0.0	0.0	0.0	0.0	0.0	0.0	0.0	0.0	0.0	0.0	0.0	0.0	0.0	0.0	0.0	0.0	0.0	0.0	0.0	23	C60
Prostate (C61)	2002	0	0.1	0.0	0.0	0.1	0.1	0.1	0.5	0.4	1.6	1.7	4.0	7.7	20.3	36.4	84.2	305.6	6.5	10.5	0.8	2	C61
Testis (C62)	93	0	0.1	0.0	0.0	0.2	0.6	0.7	0.5	0.6	0.4	0.5	0.5	0.1	0.3	0.0	2.2	1.5	0.3	0.4	0.0	16	C62
Kidney (C64)	113	0	0.0	0.0	0.0	0.0	0.2	0.2	0.1	0.3	0.3	0.3	0.7	1.3	2.4	3.0	3.0	8.1	0.4	0.6	0.1	13	C64
Bladder (C67)	74	0	0.0	0.0	0.0	0.0	0.0	0.0	0.0	0.0	0.0	0.4	0.4	0.1	1.4	1.9	3.3	9.3	0.2	0.4	0.0	15	C67
Brain, CNS (C70-72)	548	0	0.6	0.7	0.6	0.6	0.9	1.6	1.5	2.8	3.2	3.7	5.0	3.6	6.9	7.4	7.2	15.9	1.8	2.5	0.2	6	C70-72
Thyroid (C73)	34	0	0.0	0.0	0.0	0.0	0.0	0.0	0.0	0.0	0.2	0.4	0.5	0.7	1.2	0.8	0.6	1.5	0.1	0.2	0.0	18	C73
Hodgkin disease (C81)	75	0	0.1	0.0	0.1	0.2	0.1	0.1	0.3	0.4	0.4	0.3	0.8	0.1	1.0	1.7	1.7	2.4	0.2	0.4	0.0	17	C81
Non-Hodgkin lymphoma (C82-85,C96)	154	0	0.1	0.1	0.1	0.2	0.2	0.4	0.2	0.6	0.8	0.8	1.0	1.6	3.1	3.0	4.7	4.7	0.5	0.8	0.1	12	C82-85,C96
Multiple myeloma (C88+C90)	32	0	0.0	0.0	0.0	0.0	0.0	0.0	0.0	0.1	0.2	0.3	0.8	0.1	1.0	0.8	0.8	1.0	0.1	0.2	0.0	19	C88+C90
Lymphoid leukaemia (C91)	0	0	0.0	0.0	0.0	0.0	0.0	0.0	0.0	0.0	0.0	0.0	0.0	0.0	0.0	0.0	0.0	0.0	0.0	0.0	0.0	0.0	C91
Myeloid leukaemia (C92-94)	0	0	0.0	0.0	0.0	0.0	0.0	0.0	0.0	0.0	0.0	0.0	0.0	0.0	0.0	0.0	0.0	0.0	0.0	0.0	0.0	0.0	C92-94
Leukaemia unspecified (C95)	0	0	0.0	0.0	0.0	0.0	0.0	0.0	0.0	0.0	0.0	0.0	0.0	0.0	0.0	0.0	0.0	0.0	0.0	0.0	0.0	0.0	C95
Leukaemia (C91-95)	933	0	1.8	1.9	1.8	3.4	3.1	2.5	2.7	2.3	3.1	3.6	3.7	6.0	7.4	5.1	11.6	20.8	3.0	3.5	0.3	5	C91-95
All cancers but lung (C00-97/C33-34)	13532	0	4.4	3.9	4.4	8.1	10.7	13.3	20.2	27.2	39.2	56.0	85.4	130.2	203.8	305.3	464.4	1057.4	43.6	69.7	6.9	0.0	C00-97/C33-34
All sites (ALL)	14657	0	4.6	4.0	4.5	8.5	11.4	14.3	22.0	28.7	42.2	60.5	91.0	143.4	223.9	332.3	504.2	1150.2	47.2	75.7	7.5	0.0	ALL

UNK, Unknown; ASMR (W), Age Standardized Mortality Rate (World Population); CUM., Cumulative

†Percent

‡Rank based on highest ASMR excluding: All sites but lung and All sites

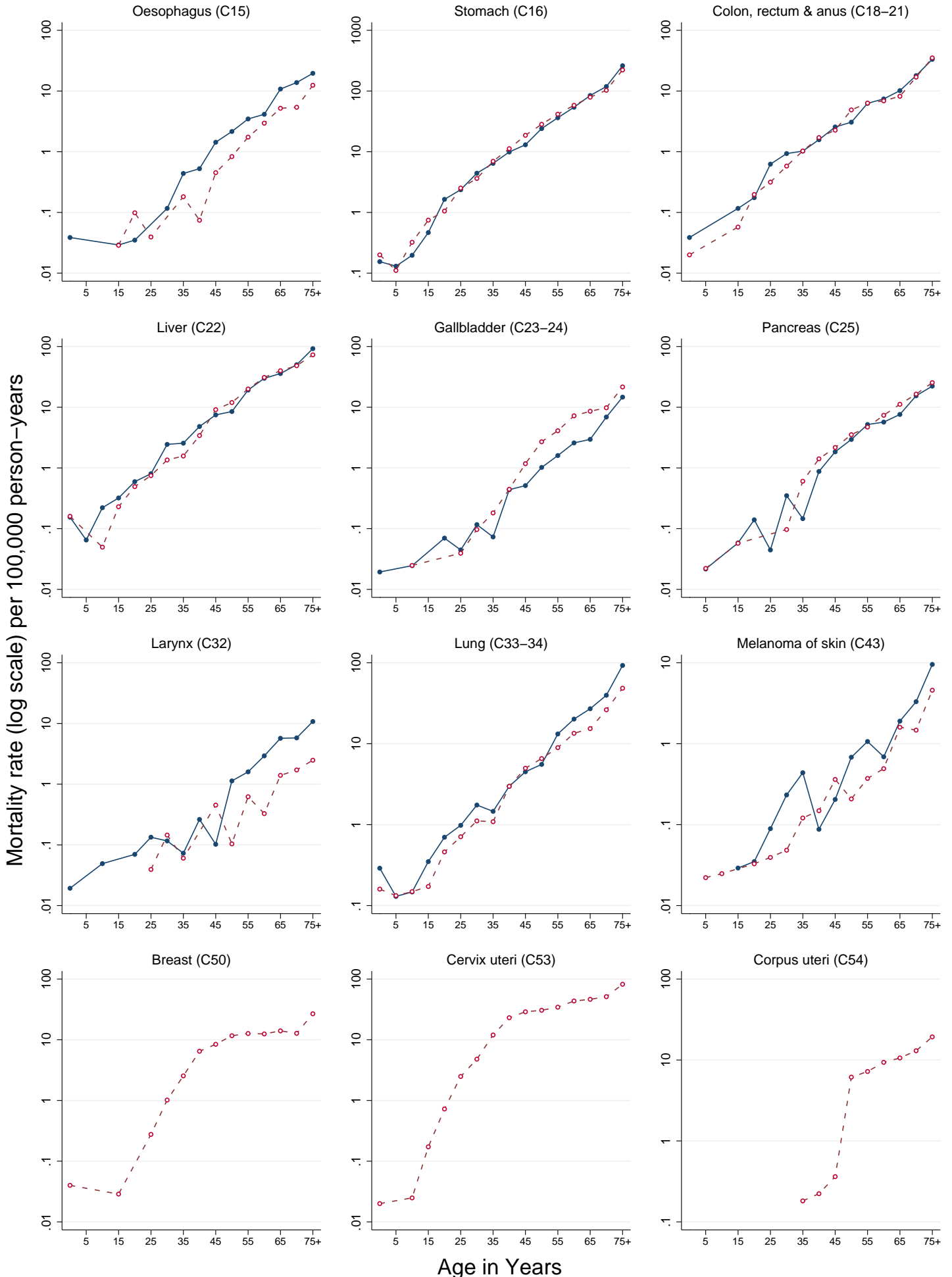
GUATEMALA (2003-2007)
Mortality per 100,000 by Age Group (years)
Females

SITE	ALL DEATHS	UNK AGE	0-4	5-9	10-14	15-19	20-24	25-29	30-34	35-39	40-44	45-49	50-54	55-59	60-64	65-69	70-74	75+	CRUDE RATE	ASMR (W)	CUM. RATE (0-74)†	Rank‡	ICD10
Lip, oral cavity, & pharynx (C00-14)	254	0	0.1	0.1	0.1	0.1	0.1	0.1	0.3	0.4	1.0	1.3	1.8	1.6	4.8	7.0	5.9	14.1	0.8	1.2	0.1	11	C00-14
Oesophagus (C15)	167	0	.	.	.	0.0	0.1	0.0	.	0.2	0.1	0.5	0.8	1.7	3.0	5.2	5.4	12.4	0.5	0.8	0.1	12	C15
Stomach (C16)	3636	0	0.2	0.1	0.3	0.7	1.1	2.5	3.6	7.0	11.2	18.6	28.3	41.5	58.3	79.1	102.9	222.3	11.2	17.1	1.8	1	C16
Colon (C18)	473	0	0.0	.	.	0.1	0.1	0.3	0.5	0.9	1.4	2.0	4.5	5.3	6.2	5.8	16.2	33.3	1.5	2.2	0.2		C18
Rectum (C19-C20)	0	0	0.0	0.0	0.0	0.0	C19-C20
Colorectal (C18-20)	0	0	0.0	0.0	0.0	24	C18-20
Rectum and anus (C19-21)	55	0	0.1	0.0	0.1	0.1	0.3	0.3	0.4	1.0	0.7	2.4	0.7	1.9	0.2	0.3	0.0		C19-21
Colon, rectum and anus (C18-21)	528	0	0.0	.	.	0.1	0.2	0.3	0.6	1.0	1.7	2.3	4.9	6.3	6.9	8.2	16.9	35.2	1.6	2.4	0.2		C18-21
Liver (C22)	1497	0	0.2	.	0.0	0.2	0.5	0.7	1.4	1.6	3.4	9.1	12.0	20.0	31.0	40.0	48.4	73.0	4.6	7.3	0.8	3	C22
Gallbladder (C23-24)	325	0	.	0.0	0.0	.	.	0.0	0.1	0.2	0.4	1.2	2.7	4.1	7.2	8.6	9.8	21.6	1.0	1.6	0.2	10	C23-24
Pancreas (C25)	431	0	.	0.0	0.0	0.1	.	.	0.1	0.6	1.4	2.2	3.5	4.7	7.4	11.2	16.5	25.4	1.3	2.1	0.2	8	C25
Nose, sinuses (C30-31)	0	0	0.0	0.0	0.0	24	C30-31
Larynx (C32)	45	0	0.0	0.1	0.1	.	0.5	0.1	0.6	0.3	1.4	1.7	2.5	0.1	0.2	0.0	19	C32
Lung, trachea and bronchus (C33-34)	849	0	0.2	0.1	0.1	0.2	0.5	0.7	1.1	1.1	3.0	5.0	6.6	8.9	13.5	15.4	26.3	48.5	2.6	3.9	0.4	4	C33-34
Melanoma of skin (C43)	59	0	.	0.0	0.0	.	0.0	0.0	0.0	0.1	0.1	0.4	0.2	0.4	0.5	1.6	1.5	4.6	0.2	0.3	0.0	17	C43
Mesothelioma (C45)	0	0	0.0	0.0	0.0	24	C45
Kaposi sarcoma (C46)	0	0	0.0	0.0	0.0	24	C46
Breast (C50)	805	0	0.0	.	.	0.0	.	0.3	1.0	2.5	6.5	8.4	11.7	12.7	12.5	14.0	12.8	26.8	2.5	3.9	0.4	5	C50
Cervix uteri (C53)	2775	0	0.0	.	0.0	0.2	0.7	2.5	4.8	12.0	23.1	28.9	30.6	34.4	43.5	46.4	51.3	82.0	8.4	13.1	1.4	2	C53
Corpus uteri (C54)	391	0	0.2	0.2	0.4	6.1	7.2	9.4	10.6	13.0	19.3	1.2	2.0	0.2	9	C54
Ovary (C56)	160	0	.	0.0	0.0	0.1	0.2	0.2	0.2	0.3	0.5	1.0	1.9	2.1	3.3	4.2	3.4	5.2	0.5	0.8	0.1	13	C56
Kidney (C64)	109	0	0.0	0.0	0.0	0.1	0.0	0.0	0.0	0.4	0.4	0.5	1.4	0.4	1.1	3.0	5.2	4.4	0.3	0.5	0.1	14	C64
Bladder (C67)	44	0	0.0	.	0.1	0.1	0.1	0.1	0.6	0.5	1.0	1.5	3.8	0.1	0.2	0.0	20	C67
Brain, CNS (C70-72)	533	0	0.4	0.7	0.4	0.7	1.0	1.0	1.5	1.6	2.4	3.0	3.9	4.5	6.1	7.0	9.6	14.3	1.6	2.2	0.2	7	C70-72
Thyroid (C73)	94	0	0.0	.	.	.	0.0	.	.	0.1	0.1	0.5	1.8	1.0	1.0	2.0	2.0	6.5	0.3	0.4	0.0	16	C73
Hodgkin disease (C81)	50	0	.	0.0	0.1	0.1	0.1	0.0	0.1	.	0.2	0.2	0.2	1.0	0.7	0.4	1.2	2.1	0.2	0.2	0.0	18	C81
Non-Hodgkin lymphoma (C82-85,C96)	119	0	0.0	0.1	0.0	0.1	0.1	0.2	0.2	0.2	0.3	0.6	1.5	1.5	1.0	1.2	2.5	5.7	0.4	0.5	0.0	15	C82-85,C96
Multiple myeloma (C88+C90)	32	0	0.0	.	0.1	0.1	0.4	0.6	0.8	0.2	1.2	1.7	0.1	0.2	0.0	21	C88+C90
Lymphoid leukaemia (C91)	0	0	0.0	0.0	0.0	0.0	C91
Myeloid leukaemia (C92-94)	0	0	0.0	0.0	0.0	0.0	C92-94
Leukaemia unspecified (C95)	0	0	0.0	0.0	0.0	0.0	C95
Leukaemia (C91-95)	857	0	1.6	1.5	1.8	2.5	2.0	1.4	2.7	2.6	3.3	4.3	3.6	6.0	5.9	8.6	6.1	14.3	2.6	3.1	0.3	6	C91-95
All cancers but lung (C00-97/C33-34)	16586	0	3.8	3.1	3.6	6.3	8.0	12.5	21.2	40.9	71.0	107.7	152.7	196.0	286.9	338.9	420.1	763.4	50.9	77.7	8.3		C00-97/C33-34
All sites (ALL)	17435	0	3.9	3.3	3.8	6.5	8.4	13.2	22.3	42.0	74.0	112.7	159.2	204.9	280.3	354.3	446.4	811.9	53.5	81.7	8.7		ALL

UNK., Unknown; ASMR (W), Age Standardized Mortality Rate (World Population); CUM., Cumulative
†Percent
‡Rank based on highest ASMR excluding: All sites but lung and All sites

GUATEMALA (2003–2007)

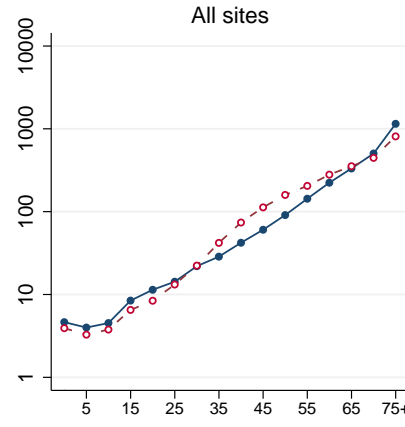
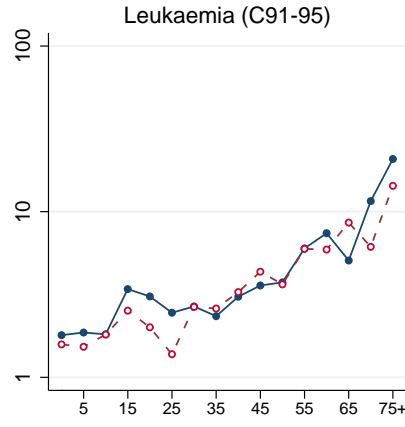
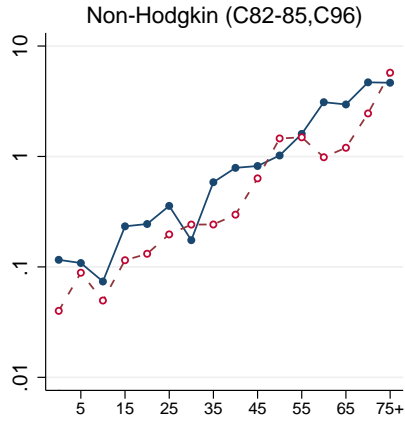
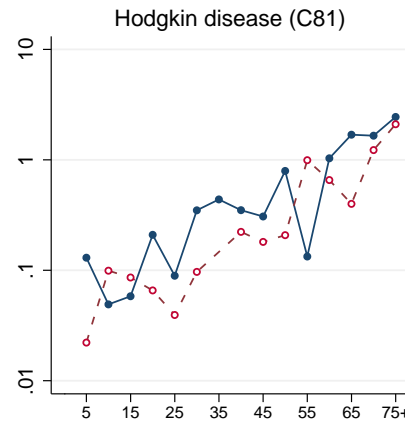
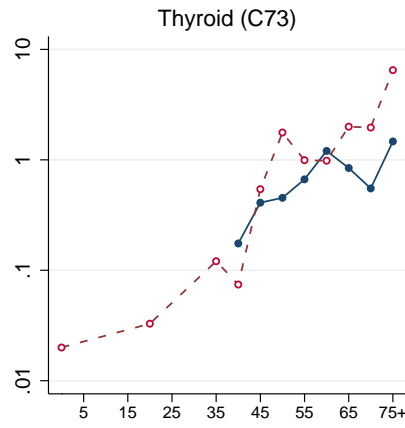
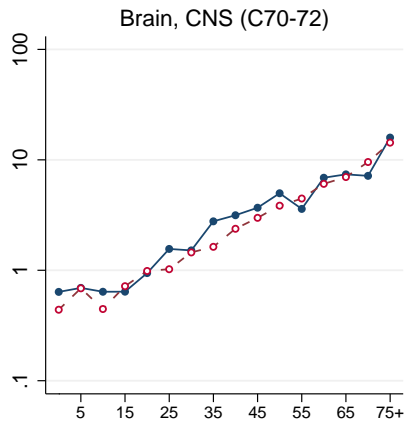
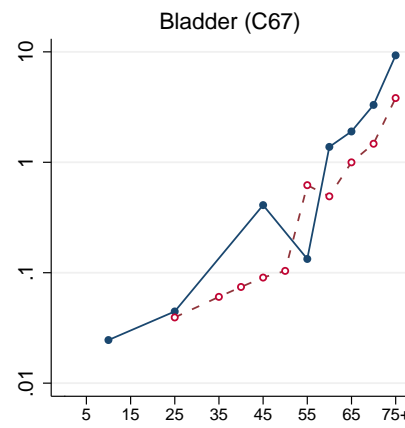
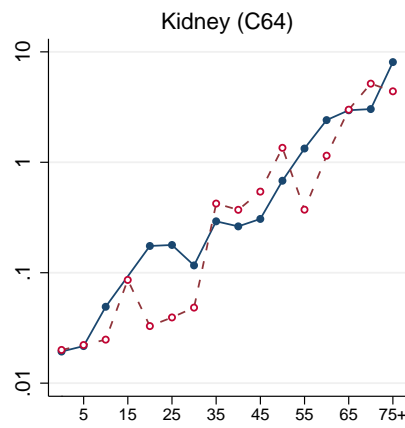
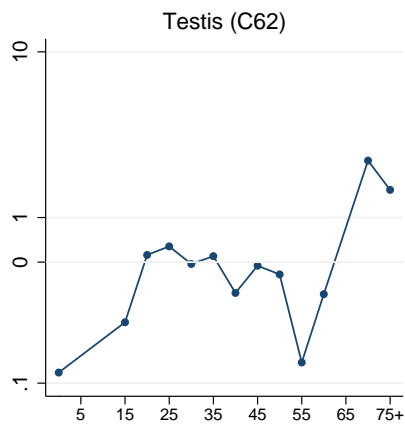
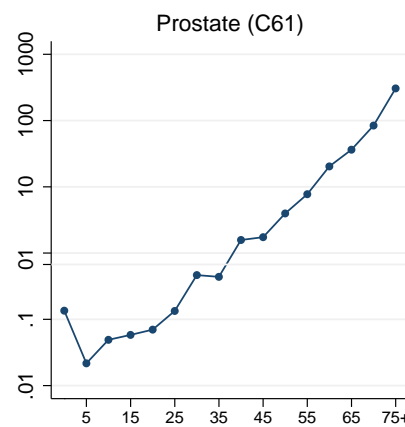
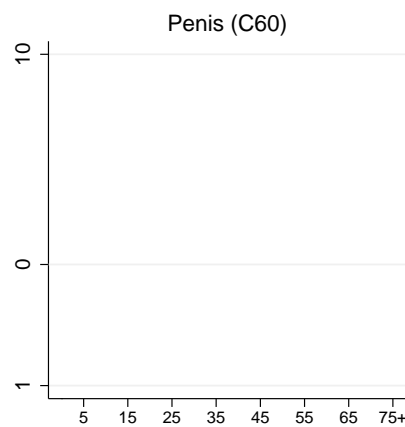
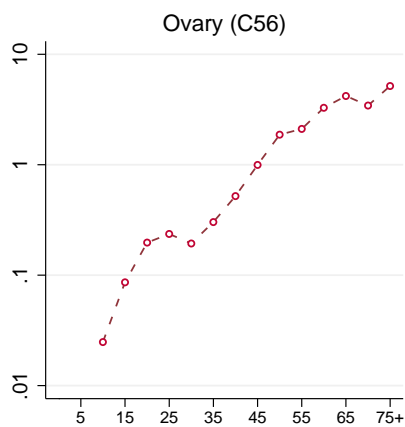
Age-specific mortality rates per 100,000 person-years



GUATEMALA (2003-2007)

Age-specific mortality rates per 100,000 person-years

Mortality rate (log scale) per 100,000 person-years



GUATEMALA (2003-2007)

Average annual person-years

