

# International Agency for Research on Cancer

---



## Cancer in Central and South America

### SURINAME

This country profile for the Cancer in Central and South America project provides, for each participating cancer registry tables and graphics showing numbers of cases and rates by year, sex and age group for major sites of cancer together with a population pyramid. A country summary is also provided based on aggregated registry data and national mortality data from the WHO mortality database:

([http://www.who.int/healthinfo/statistics/mortality\\_rawdata/en/index.html](http://www.who.int/healthinfo/statistics/mortality_rawdata/en/index.html))

Citation of any of these data should be in the following format:

“Sierra MS, Abriata MG, Barrios E, Bravo LE, Cueva P, Fernandez L, Pineros M, Rebelo M, de Vries E, Forman D. Editors on behalf of the Cancer in Central and South America Working Group (2016). Cancer in Central and South America. Lyon: International Agency for Research on Cancer. Available from: [http://www-dep.iarc.fr/CSU\\_resources.htm](http://www-dep.iarc.fr/CSU_resources.htm) accessed [date].”

## Country's Summary Tables and Figures

# **SURINAME<sup>1,2</sup>**

## **(2003-2007)**

<sup>1</sup> No incidence data available

<sup>2</sup> National mortality data obtained from the WHO mortality database:  
[http://www.who.int/healthinfo/statistics/mortality\\_rawdata/en/index.html](http://www.who.int/healthinfo/statistics/mortality_rawdata/en/index.html)

**SURINAME (2003-2007)**  
**Number of Deaths in Major Diagnosis Groups**  
**per Calendar Year**

SITE	YEAR					TOTAL n (%)
	2003 n (%)	2004 n (%)	2005 n (%)	2006 n (%)	2007 n (%)	
<b>MALES</b>						
Lip, oral cavity, and pharynx (C00-C14)	5 (3.2)	2 (1.3)	3 (1.9)	4 (2.3)	3 (1.9)	17 (2.1)
Digestive organs (C15-C26)	65 (41.9)	58 (37.9)	59 (38.1)	56 (32.4)	49 (30.2)	287 (36.0)
Respiratory organs (C30-C39)	28 (18.1)	27 (17.6)	25 (16.1)	27 (15.6)	29 (17.9)	136 (17.0)
Bone, cartilage, and skin (C40-C44)	0 (0.0)	0 (0.0)	0 (0.0)	1 (0.6)	2 (1.2)	3 (0.4)
Male genitalia (C60-C63)	28 (18.1)	31 (20.3)	34 (21.9)	49 (28.3)	33 (20.4)	175 (21.9)
Urinary organs (C64-C68)	2 (1.3)	1 (0.7)	8 (5.2)	8 (4.6)	7 (4.3)	26 (3.3)
Eye, brain, and thyroid (C69-C75)	4 (2.6)	4 (2.6)	6 (3.9)	7 (4.0)	7 (4.3)	28 (3.5)
Hematopoietic (C81-C96)	15 (9.7)	15 (9.8)	12 (7.7)	16 (9.2)	14 (8.6)	72 (9.0)
All sites	155 (100.0)	153 (100.0)	155 (100.0)	173 (100.0)	162 (100.0)	798 (100.0)
<b>FEMALES</b>						
Lip, oral cavity, and pharynx (C00-C14)	0 (0.0)	1 (0.6)	3 (2.2)	2 (1.2)	1 (0.7)	7 (0.9)
Digestive organs (C15-C26)	44 (29.5)	45 (28.7)	46 (34.1)	46 (28.0)	38 (25.7)	219 (29.1)
Respiratory organs (C30-C39)	10 (6.7)	9 (5.7)	12 (8.9)	17 (10.4)	14 (9.5)	62 (8.2)
Bone, cartilage, and skin (C40-C44)	1 (0.7)	0 (0.0)	0 (0.0)	1 (0.6)	0 (0.0)	2 (0.3)
Breast (C50)	20 (13.4)	23 (14.6)	26 (19.3)	22 (13.4)	24 (16.2)	115 (15.3)
Female genitalia (C51-C58)	47 (31.5)	44 (28.0)	24 (17.8)	41 (25.0)	31 (20.9)	187 (24.8)
Urinary organs (C64-C68)	1 (0.7)	6 (3.8)	1 (0.7)	1 (0.6)	0 (0.0)	9 (1.2)
Eye, brain, and thyroid (C69-C75)	7 (4.7)	10 (6.4)	6 (4.4)	14 (8.5)	10 (6.8)	47 (6.2)
Hematopoietic (C81-C96)	13 (8.7)	7 (4.5)	11 (8.1)	12 (7.3)	9 (6.1)	52 (6.9)
All sites	149 (100.0)	157 (100.0)	135 (100.0)	164 (100.0)	148 (100.0)	753 (100.0)
<b>BOTH SEXES</b>						
Lip, oral cavity, and pharynx (C00-C14)	5 (1.6)	3 (1.0)	6 (2.1)	6 (1.8)	4 (1.3)	24 (1.5)
Digestive organs (C15-C26)	109 (35.9)	103 (33.2)	105 (36.2)	102 (30.3)	87 (28.1)	506 (32.6)
Respiratory organs (C30-C39)	38 (12.5)	36 (11.6)	37 (12.8)	44 (13.1)	43 (13.9)	198 (12.8)
Bone, cartilage, and skin (C40-C44)	1 (0.3)	0 (0.0)	0 (0.0)	2 (0.6)	2 (0.6)	5 (0.3)
Urinary organs (C64-C68)	3 (1.0)	7 (2.3)	9 (3.1)	9 (2.7)	7 (2.3)	35 (2.3)
Eye, brain, and thyroid (C69-C75)	11 (3.6)	14 (4.5)	12 (4.1)	21 (6.2)	17 (5.5)	75 (4.8)
Hematopoietic (C81-C96)	28 (9.2)	22 (7.1)	23 (7.9)	28 (8.3)	23 (7.4)	124 (8.0)
All sites	304 (100.0)	310 (100.0)	290 (100.0)	337 (100.0)	310 (100.0)	1551 (100.0)

**SURINAME (2003-2007)**  
**Age Standardized Mortality Rate (World Population) per 100,000**  
**in Major Diagnosis Groups per Calendar Year**

SITE	YEAR					TOTAL ASMR (%)
	2003 ASMR (%)	2004 ASMR (%)	2005 ASMR (%)	2006 ASMR (%)	2007 ASMR (%)	
<b>MALES</b>						
Lip, oral cavity, and pharynx (C00-C14)	2.7 (3.3)	1.1 (1.5)	1.6 (2.0)	2.1 (2.5)	1.3 (1.6)	1.8 (2.2)
Digestive organs (C15-C26)	35.5 (43.0)	30.4 (38.9)	30.6 (38.7)	28.1 (33.0)	23.7 (30.6)	29.6 (36.7)
Respiratory organs (C30-C39)	14.9 (18.1)	13.7 (17.6)	13.1 (16.6)	13.9 (16.3)	13.7 (17.7)	13.9 (17.2)
Bone, cartilage, and skin (C40-C44)	0.0 (0.0)	0.0 (0.0)	0.0 (0.0)	0.5 (0.6)	1.2 (1.5)	0.3 (0.4)
Male genitalia (C60-C63)	14.9 (18.1)	16.1 (20.7)	17.2 (21.8)	24.4 (28.7)	15.6 (20.1)	17.7 (22.0)
Urinary organs (C64-C68)	1.1 (1.4)	0.5 (0.7)	4.1 (5.2)	4.1 (4.8)	3.1 (4.0)	2.6 (3.3)
Eye, brain, and thyroid (C69-C75)	2.2 (2.7)	1.9 (2.5)	2.6 (3.3)	3.1 (3.7)	3.4 (4.3)	2.7 (3.3)
Hematopoietic (C81-C96)	7.8 (9.4)	7.0 (9.0)	5.8 (7.3)	6.9 (8.1)	6.9 (8.9)	6.8 (8.5)
All sites	82.5 (100.0)	78.1 (100.0)	79.0 (100.0)	85.2 (100.0)	77.5 (100.0)	80.5 (100.0)
<b>FEMALES</b>						
Lip, oral cavity, and pharynx (C00-C14)	0.0 (0.0)	0.3 (0.5)	1.2 (2.1)	0.6 (1.0)	0.4 (0.7)	0.5 (0.8)
Digestive organs (C15-C26)	19.7 (29.7)	19.4 (28.8)	19.8 (34.3)	18.3 (27.7)	14.6 (25.2)	18.3 (29.1)
Respiratory organs (C30-C39)	4.6 (6.9)	3.8 (5.7)	5.1 (8.8)	7.0 (10.7)	5.0 (8.7)	5.1 (8.1)
Bone, cartilage, and skin (C40-C44)	0.4 (0.6)	0.0 (0.0)	0.0 (0.0)	0.3 (0.5)	0.0 (0.0)	0.1 (0.2)
Breast (C50)	8.6 (13.0)	10.1 (15.0)	11.2 (19.4)	8.4 (12.8)	10.0 (17.3)	9.7 (15.4)
Female genitalia (C51-C58)	20.5 (31.0)	19.6 (29.1)	10.9 (18.8)	17.0 (25.9)	11.7 (20.2)	15.8 (25.1)
Urinary organs (C64-C68)	0.4 (0.5)	2.6 (3.9)	0.4 (0.8)	0.5 (0.7)	0.0 (0.0)	0.8 (1.2)
Eye, brain, and thyroid (C69-C75)	3.1 (4.7)	3.7 (5.4)	2.5 (4.3)	5.8 (8.8)	4.1 (7.0)	3.8 (6.1)
Hematopoietic (C81-C96)	5.9 (8.9)	3.0 (4.5)	4.3 (7.4)	4.9 (7.4)	3.4 (5.9)	4.3 (6.8)
All sites	66.1 (100.0)	67.4 (100.0)	57.9 (100.0)	65.9 (100.0)	58.0 (100.0)	63.0 (100.0)
<b>BOTH SEXES</b>						
Lip, oral cavity, and pharynx (C00-C14)	1.3 (1.7)	0.7 (0.9)	1.4 (2.2)	1.4 (1.9)	0.8 (1.2)	1.1 (1.6)
Digestive organs (C15-C26)	26.8 (36.9)	24.2 (33.9)	24.5 (37.1)	22.5 (30.6)	18.7 (28.4)	23.3 (33.3)
Respiratory organs (C30-C39)	9.2 (12.7)	8.3 (11.6)	8.7 (13.2)	10.1 (13.7)	8.9 (13.6)	9.1 (13.0)
Bone, cartilage, and skin (C40-C44)	0.2 (0.2)	0.0 (0.0)	0.0 (0.0)	0.4 (0.6)	0.5 (0.8)	0.2 (0.3)
Urinary organs (C64-C68)	0.7 (1.0)	1.6 (2.3)	2.1 (3.1)	2.1 (2.8)	1.4 (2.1)	1.6 (2.3)
Eye, brain, and thyroid (C69-C75)	2.7 (3.7)	2.9 (4.1)	2.6 (4.0)	4.5 (6.2)	3.7 (5.6)	3.3 (4.7)
Hematopoietic (C81-C96)	6.8 (9.3)	4.9 (6.8)	5.0 (7.5)	5.8 (8.0)	5.0 (7.5)	5.5 (7.8)
All sites	72.7 (100.0)	71.5 (100.0)	66.2 (100.0)	73.3 (100.0)	65.7 (100.0)	69.8 (100.0)

**SURINAME (2003-2007)**  
**Mortality per 100,000 by Age Group (years)**  
**Males**

SITE	ALL DEATHS	UNK AGE	0-4	5-9	10-14	15-19	20-24	25-29	30-34	35-39	40-44	45-49	50-54	55-59	60-64	65-69	70-74	75+	CRUDE RATE	ASMR (W)	CUM. RATE (0-74)†	Rank‡	ICD10
Lip, oral cavity, & pharynx (C00-14)	17	0	.	.	.	.	.	.	1.0	.	2.2	.	5.9	.	15.7	11.5	10.3	4.8	1.4	1.8	0.2	10	C00-14
Oesophagus (C15)	18	0	.	.	.	.	.	.	.	.	.	1.5	.	7.6	9.4	15.3	15.5	19.3	1.4	1.9	0.2	9	C15
Stomach (C16)	49	0	.	.	.	.	.	.	1.0	.	2.2	5.8	9.8	5.1	15.7	34.5	25.8	77.2	3.9	5.0	0.5	4	C16
Colon (C18)	52	0	.	0.8	.	.	.	.	.	1.0	2.2	1.5	3.9	7.6	25.1	23.0	46.5	91.7	4.2	5.3	0.6		C18
Rectum (C19-C20)	0	0	.	.	.	.	.	.	.	.	.	.	.	.	.	.	.	.	0.0	0.0	0.0		C19-C20
Colorectal (C18-20)	0	0	.	.	.	.	.	.	.	.	.	.	.	.	.	.	.	.	0.0	0.0	0.0	22	C18-20
Rectum and anus (C19-21)	7	0	.	.	.	.	.	.	.	.	.	1.5	.	.	6.3	11.5	5.2	.	0.6	0.8	0.1		C19-21
Colon, rectum and anus (C18-21)	59	0	.	0.8	.	.	.	.	.	1.0	2.2	2.9	3.9	7.6	31.3	34.5	51.6	91.7	4.7	6.1	0.7		C18-21
Liver (C22)	64	0	.	0.8	.	0.8	0.9	.	1.0	2.1	1.1	1.5	5.9	20.4	15.7	49.9	82.6	53.1	5.1	6.5	0.9	3	C22
Gallbladder (C23-24)	2	0	.	.	.	.	.	.	.	.	.	.	.	.	3.1	.	5.2	.	0.2	0.2	0.0	18	C23-24
Pancreas (C25)	35	0	.	.	.	.	0.9	.	.	.	1.1	1.5	7.9	7.6	12.5	19.2	51.6	29.0	2.8	3.6	0.5	5	C25
Nose, sinuses (C30-31)	0	0	.	.	.	.	.	.	.	.	.	.	.	.	.	.	.	.	0.0	0.0	0.0	22	C30-31
Larynx (C32)	10	0	.	.	.	.	.	.	.	.	.	.	3.9	.	3.1	7.7	10.3	14.5	0.8	1.0	0.1	13	C32
Lung, trachea and bronchus (C33-34)	126	0	.	.	.	.	.	1.0	.	2.1	7.7	7.3	13.8	33.1	50.1	61.4	118.7	173.7	10.1	12.8	1.5	2	C33-34
Melanoma of skin (C43)	3	0	.	.	.	.	.	.	.	.	.	.	.	.	3.1	3.8	5.2	.	0.2	0.3	0.1	17	C43
Mesothelioma (C45)	0	0	.	.	.	.	.	.	.	.	.	.	.	.	.	.	.	.	0.0	0.0	0.0	22	C45
Kaposi sarcoma (C46)	0	0	.	.	.	.	.	.	.	.	.	.	.	.	.	.	.	.	0.0	0.0	0.0	22	C46
Breast (C50)	0	0	.	.	.	.	.	.	.	.	.	.	.	.	.	.	.	.	0.0	0.0	0.0	22	C50
Penis (C60)	0	0	.	.	.	.	.	.	.	.	.	.	.	.	.	.	.	.	0.0	0.0	0.0	22	C60
Prostate (C61)	170	0	.	.	.	.	.	.	.	1.0	.	4.4	3.9	15.3	40.7	72.9	129.1	487.4	13.6	17.3	1.3	1	C61
Testis (C62)	5	0	.	.	.	.	0.9	1.0	1.0	.	.	.	.	.	.	.	10.3	.	0.4	0.4	0.1	16	C62
Kidney (C64)	10	0	.	.	.	.	.	1.0	1.0	1.0	.	.	.	.	6.3	7.7	5.2	9.7	0.8	1.0	0.1	14	C64
Bladder (C67)	16	0	.	.	.	.	.	.	.	.	.	.	.	2.5	15.3	31.0	24.1	1.3	1.7	1.7	0.2	11	C67
Brain, CNS (C70-72)	28	0	1.5	0.8	1.7	.	.	.	.	.	3.3	.	13.8	12.7	9.4	.	5.2	19.3	2.2	2.7	0.2	6	C70-72
Thyroid (C73)	0	0	.	.	.	.	.	.	.	.	.	.	.	.	.	.	.	.	0.0	0.0	0.0	22	C73
Hodgkin disease (C81)	6	0	.	.	.	.	.	.	.	1.0	.	1.5	3.9	2.5	3.1	.	.	.	0.5	0.6	0.1	15	C81
Non-Hodgkin lymphoma (C82-85,C96)	22	0	0.8	0.8	.	0.8	.	1.0	1.0	2.1	2.2	4.4	2.0	7.6	6.3	3.8	5.2	9.7	1.8	2.0	0.2	8	C82-85,C96
Multiple myeloma (C88+C90)	15	0	.	.	.	.	.	.	.	.	.	.	2.0	2.5	9.4	19.2	5.2	19.3	1.2	1.6	0.2	12	C88+C90
Lymphoid leukaemia (C91)	0	0	.	.	.	.	.	.	.	.	.	.	.	.	.	.	.	.	0.0	0.0	0.0		C91
Myeloid leukaemia (C92-94)	0	0	.	.	.	.	.	.	.	.	.	.	.	.	.	.	.	.	0.0	0.0	0.0		C92-94
Leukaemia unspecified (C95)	0	0	.	.	.	.	.	.	.	.	.	.	.	.	.	.	.	.	0.0	0.0	0.0		C95
Leukaemia (C91-95)	29	0	.	1.5	1.7	1.7	2.6	.	2.0	.	.	.	3.9	2.5	3.1	15.3	15.5	33.8	2.3	2.7	0.3	7	C91-95
All cancers but lung (C00-97/C33-34)	672	0	2.3	5.4	4.3	5.9	7.0	6.2	8.9	13.4	18.7	35.0	76.8	109.5	238.0	364.5	573.1	1008.5	53.6	67.6	7.3		C00-97/C33-34
All sites (ALL)	798	0	2.3	5.4	4.3	5.9	7.0	7.2	8.9	15.5	26.4	42.3	90.5	142.6	288.1	425.9	691.8	1182.2	63.7	80.5	8.8		ALL

UNK, Unknown; ASMR (W), Age Standardized Mortality Rate (World Population); CUM., Cumulative

†Percent

‡Rank based on highest ASMR excluding: All sites but lung and All sites

**SURINAME (2003-2007)**  
**Mortality per 100,000 by Age Group (years)**  
**Females**

SITE	ALL DEATHS	UNK AGE	0-4	5-9	10-14	15-19	20-24	25-29	30-34	35-39	40-44	45-49	50-54	55-59	60-64	65-69	70-74	75+	CRUDE RATE	ASMR (W)	CUM. RATE (0-74)†	Rank‡	ICD10
Lip, oral cavity, & pharynx (C00-14)	7	0	.	.	.	.	.	2.1	.	1.1	.	.	.	.	.	.	8.2	6.5	0.6	0.5	0.1	14	C00-14
Oesophagus (C15)	4	0	.	.	.	.	.	1.1	.	.	.	.	.	2.4	.	3.2	4.1	.	0.3	0.4	0.1	18	C15
Stomach (C16)	34	0	.	.	.	.	.	1.1	.	1.1	4.6	2.9	3.8	4.8	22.2	9.7	12.2	26.2	2.7	2.9	0.3	7	C16
Colon (C18)	48	0	.	.	.	.	.	1.1	.	.	1.2	2.9	3.8	7.1	13.9	25.8	48.9	45.8	3.9	4.0	0.5		C18
Rectum (C19-C20)	0	0	.	.	.	.	.	.	.	.	.	.	.	.	.	.	.	.	0.0	0.0	0.0		C19-C20
Colorectal (C18-20)	0	0	.	.	.	.	.	.	.	.	.	.	.	.	.	.	.	.	0.0	0.0	0.0	24	C18-20
Rectum and anus (C19-21)	6	0	.	.	.	.	.	.	1.0	.	.	.	1.9	7.1	.	.	.	3.3	0.5	0.5	0.1		C19-21
Colon, rectum and anus (C18-21)	54	0	.	.	.	.	.	1.1	1.0	.	1.2	2.9	5.7	14.3	13.9	25.8	48.9	49.1	4.3	4.5	0.6		C18-21
Liver (C22)	46	0	.	0.8	0.9	.	.	1.1	2.1	2.2	1.2	4.4	3.8	7.1	8.3	22.6	32.6	39.2	3.7	3.8	0.4	4	C22
Gallbladder (C23-24)	7	0	.	.	.	.	.	.	.	.	1.2	.	.	.	2.8	6.4	4.1	6.5	0.6	0.6	0.1	12	C23-24
Pancreas (C25)	19	0	.	.	.	.	.	.	.	.	1.2	.	3.8	4.8	8.3	.	8.2	29.4	1.5	1.5	0.1	9	C25
Nose, sinuses (C30-31)	0	0	.	.	.	.	.	.	.	.	.	.	.	.	.	.	.	.	0.0	0.0	0.0	24	C30-31
Larynx (C32)	2	0	.	.	.	.	.	.	.	.	.	.	.	2.4	.	.	.	3.3	0.2	0.2	0.0	20	C32
Lung, trachea and bronchus (C33-34)	60	0	.	.	.	.	.	.	1.0	2.2	2.3	.	7.6	7.1	13.9	35.5	65.2	52.3	4.8	5.0	0.7	3	C33-34
Melanoma of skin (C43)	2	0	.	.	.	.	.	.	.	.	1.2	.	.	.	.	.	.	3.3	0.2	0.1	0.0	21	C43
Mesothelioma (C45)	0	0	.	.	.	.	.	.	.	.	.	.	.	.	.	.	.	.	0.0	0.0	0.0	24	C45
Kaposi sarcoma (C46)	0	0	.	.	.	.	.	.	.	.	.	.	.	.	.	.	.	.	0.0	0.0	0.0	24	C46
Breast (C50)	115	0	.	.	.	.	.	1.1	5.2	7.8	12.7	11.7	19.0	23.8	38.8	51.6	53.0	65.4	9.3	9.7	1.1	2	C50
Cervix uteri (C53)	133	0	.	.	.	.	.	4.3	4.2	10.0	13.9	26.3	20.9	26.1	44.4	41.9	61.1	65.4	10.7	11.3	1.3	1	C53
Corpus uteri (C54)	11	0	.	.	.	.	.	.	.	.	1.2	.	1.9	.	8.3	9.7	.	9.8	0.9	1.0	0.1	11	C54
Ovary (C56)	43	0	.	.	.	.	0.9	.	.	3.3	2.3	8.8	5.7	4.8	11.1	22.6	16.3	36.0	3.5	3.6	0.4	5	C56
Kidney (C64)	5	0	.	.	.	.	.	1.1	.	.	1.2	1.5	1.9	.	2.8	.	.	.	0.4	0.4	0.0	16	C64
Bladder (C67)	4	0	.	.	.	.	.	.	.	.	.	.	.	2.4	.	.	4.1	6.5	0.3	0.3	0.0	19	C67
Brain, CNS (C70-72)	42	0	.	2.4	.	.	2.7	2.1	4.2	2.2	3.5	1.5	5.7	7.1	8.3	12.9	20.4	19.6	3.4	3.4	0.4	6	C70-72
Thyroid (C73)	5	0	.	.	.	.	.	.	.	.	.	.	.	.	2.8	3.2	8.2	3.3	0.4	0.4	0.1	17	C73
Hodgkin disease (C81)	6	0	.	.	.	.	0.9	2.1	.	.	.	.	.	4.8	2.8	.	.	.	0.5	0.5	0.1	13	C81
Non-Hodgkin lymphoma (C82-85,C96)	17	0	.	.	.	0.9	0.9	.	1.0	.	.	1.5	5.7	2.4	2.8	3.2	8.2	16.4	1.4	1.4	0.1	10	C82-85,C96
Multiple myeloma (C88+C90)	6	0	.	.	.	.	.	.	.	.	.	.	.	4.8	.	3.2	4.1	6.5	0.5	0.5	0.1	15	C88+C90
Lymphoid leukaemia (C91)	0	0	.	.	.	.	.	.	.	.	.	.	.	.	.	.	.	.	0.0	0.0	0.0		C91
Myeloid leukaemia (C92-94)	0	0	.	.	.	.	.	.	.	.	.	.	.	.	.	.	.	.	0.0	0.0	0.0		C92-94
Leukaemia unspecified (C95)	0	0	.	.	.	.	.	.	.	.	.	.	.	.	.	.	.	.	0.0	0.0	0.0		C95
Leukaemia (C91-95)	23	0	.	0.8	1.8	0.9	0.9	3.2	2.1	.	.	1.5	.	.	2.8	12.9	12.2	13.1	1.9	1.9	0.2	8	C91-95
All cancers but lung (C00-97/C33-34)	693	0	0.8	4.0	2.7	2.6	8.2	22.4	26.0	33.5	53.2	70.0	96.7	140.2	213.6	270.8	350.5	474.2	55.8	58.0	6.5		C00-97/C33-34
All sites (ALL)	753	0	0.8	4.0	2.7	2.6	8.2	22.4	27.1	35.7	55.5	70.0	104.3	147.3	227.4	306.2	415.8	526.5	60.6	63.0	7.1		ALL

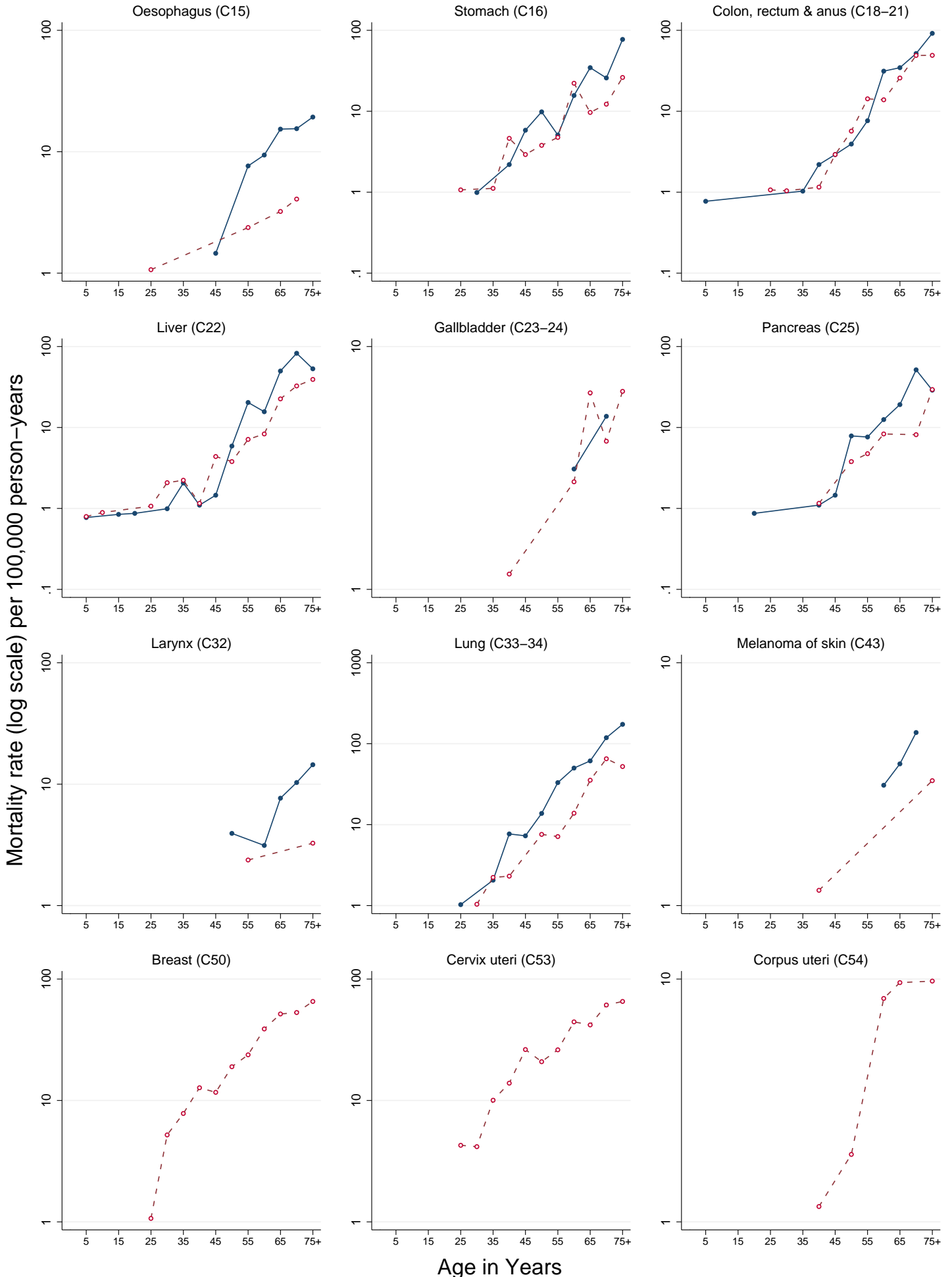
UNK, Unknown; ASMR (W), Age Standardized Mortality Rate (World Population); CUM., Cumulative

†Percent

‡Rank based on highest ASMR excluding: All sites but lung and All sites

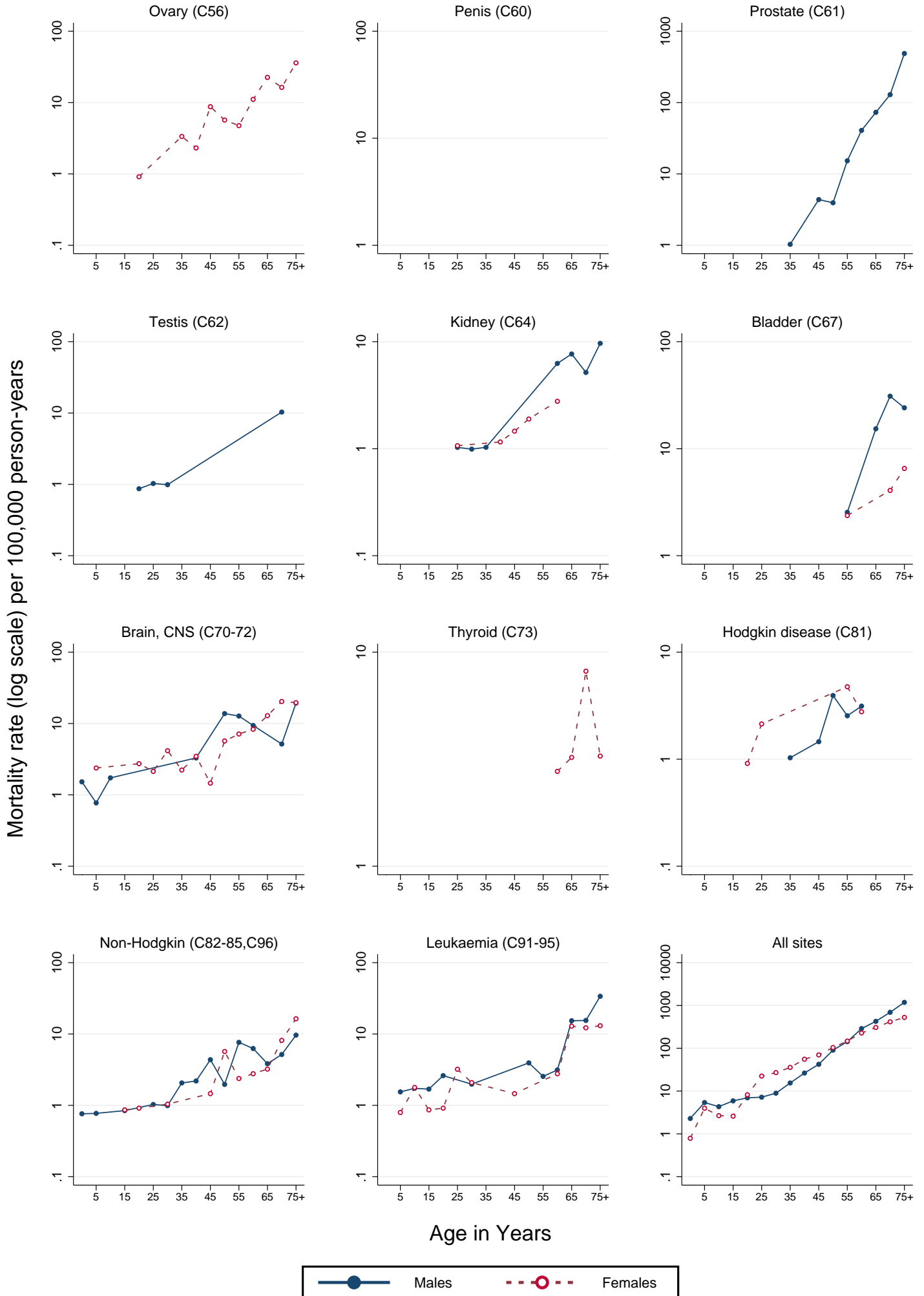
# SURINAME (2003–2007)

Age-specific mortality rates per 100,000 person-years



# SURINAME (2003-2007)

## Age-specific mortality rates per 100,000 person-years





# SURINAME (2003-2007)

Average annual person-years

Males

Females

4145  
3874  
5213  
6386  
7855  
10162  
13725  
18215  
19404  
20172  
19436  
23003  
23685  
23103  
25902  
26239

6116  
4907  
6205  
7211  
8418  
10549  
13707  
17293  
17923  
19219  
18730  
21907  
23150  
22460  
25169  
25393

75+  
70-74  
65-69  
60-64  
55-59  
50-54  
45-49  
40-44  
35-39  
30-34  
25-29  
20-24  
15-19  
10-14  
5-9  
0-4

100 90 80 70 60 50 40 30 20 10 0 0 10 20 30 40 50 60 70 80 90 100

Population in Thousands

CSA - 9