

International Agency for Research on Cancer



Cancer in Central and South America

URUGUAY

This country profile for the Cancer in Central and South America project provides, for each participating cancer registry tables and graphics showing numbers of cases and rates by year, sex and age group for major sites of cancer together with a population pyramid. A country summary is also provided based on aggregated registry data and national mortality data from the WHO mortality database:

(http://www.who.int/healthinfo/statistics/mortality_rawdata/en/index.html)

Citation of any of these data should be in the following format:

“Sierra MS, Abriata MG, Barrios E, Bravo LE, Cueva P, Fernandez L, Pineros M, Rebelo M, de Vries E, Forman D. Editors on behalf of the Cancer in Central and South America Working Group (2016). Cancer in Central and South America. Lyon: International Agency for Research on Cancer. Available from: http://www-dep.iarc.fr/CSU_resources.htm accessed [date].”

Country's Summary Tables and Figures

URUGUAY^{1,2} (2005-2007)

¹ Country's incidence rates were estimated using data from the National population-based cancer registry of Uruguay

² National mortality data obtained from the WHO mortality database:
http://www.who.int/healthinfo/statistics/mortality_rawdata/en/index.html

Registry Summary Tables and Figures

URUGUAY, NATIONAL REGISTRY (2005-2007)

Registry Director*: Dr Enrique Barrios

Registry Staff*: Rafael Alonso, Mariela Garau, Carina Musetti

*Director and staff as notified at time of call for data in 2013. Current contact information for cancer registries in the region can be found at: http://www.iacr.com.fr/index.php?option=com_comprofiler&task=usersList&listid=5.

URUGUAY (2005-2007)
Number of Cases in Major Diagnosis Groups
per Calendar Year

SITE	YEAR			TOTAL n (%)
	2005 n (%)	2006 n (%)	2007 n (%)	
MALES				
Lip, oral cavity, and pharynx (C00-C14)	205 (2.7)	194 (2.6)	207 (2.8)	606 (2.7)
Digestive organs (C15-C26)	1728 (22.5)	1706 (22.7)	1702 (23.2)	5136 (22.8)
Respiratory organs (C30-C39)	1313 (17.1)	1265 (16.8)	1147 (15.6)	3725 (16.5)
Bone, cartilage, and skin (C40-C44)	1027 (13.4)	1117 (14.9)	1079 (14.7)	3223 (14.3)
Breast (C50)	13 (0.2)	18 (0.2)	19 (0.3)	50 (0.2)
Male genitalia (C60-C63)	1576 (20.5)	1560 (20.8)	1526 (20.8)	4662 (20.7)
Urinary organs (C64-C68)	668 (8.7)	622 (8.3)	680 (9.3)	1970 (8.7)
Eye, brain, and thyroid (C69-C75)	173 (2.2)	159 (2.1)	144 (2.0)	476 (2.1)
Hematopoietic (C81-C96)	490 (6.4)	430 (5.7)	397 (5.4)	1317 (5.8)
Other and unspecified	497 (6.5)	439 (5.8)	432 (5.9)	1368 (6.1)
All sites	7690 (100.0)	7510 (100.0)	7333 (100.0)	22533 (100.0)
FEMALES				
Lip, oral cavity, and pharynx (C00-C14)	72 (1.1)	63 (0.9)	67 (1.0)	202 (1.0)
Digestive organs (C15-C26)	1581 (23.1)	1455 (21.7)	1581 (23.9)	4617 (22.9)
Respiratory organs (C30-C39)	260 (3.8)	299 (4.5)	280 (4.2)	839 (4.2)
Bone, cartilage, and skin (C40-C44)	909 (13.3)	919 (13.7)	952 (14.4)	2780 (13.8)
Breast (C50)	1701 (24.9)	1683 (25.1)	1671 (25.3)	5055 (25.1)
Female genitalia (C51-C58)	919 (13.4)	953 (14.2)	811 (12.3)	2683 (13.3)
Urinary organs (C64-C68)	289 (4.2)	247 (3.7)	277 (4.2)	813 (4.0)
Eye, brain, and thyroid (C69-C75)	218 (3.2)	281 (4.2)	240 (3.6)	739 (3.7)
Hematopoietic (C81-C96)	453 (6.6)	388 (5.8)	345 (5.2)	1186 (5.9)
Other and unspecified	441 (6.4)	415 (6.2)	386 (5.8)	1242 (6.2)
All sites	6843 (100.0)	6703 (100.0)	6610 (100.0)	20156 (100.0)
BOTH SEXES				
Lip, oral cavity, and pharynx (C00-C14)	277 (1.9)	257 (1.8)	274 (2.0)	808 (1.9)
Digestive organs (C15-C26)	3309 (22.8)	3161 (22.2)	3283 (23.5)	9753 (22.8)
Respiratory organs (C30-C39)	1573 (10.8)	1564 (11.0)	1427 (10.2)	4564 (10.7)
Bone, cartilage, and skin (C40-C44)	1936 (13.3)	2036 (14.3)	2031 (14.6)	6003 (14.1)
Urinary organs (C64-C68)	957 (6.6)	869 (6.1)	957 (6.9)	2783 (6.5)
Eye, brain, and thyroid (C69-C75)	391 (2.7)	440 (3.1)	384 (2.8)	1215 (2.8)
Hematopoietic (C81-C96)	943 (6.5)	818 (5.8)	742 (5.3)	2503 (5.9)
Other and unspecified	938 (6.5)	854 (6.0)	818 (5.9)	2610 (6.1)
All sites	14533 (100.0)	14213 (100.0)	13943 (100.0)	42689 (100.0)

URUGUAY (2005-2007)
Age Standardized Incidence Rate (World Population) per 100,000
in Major Diagnosis Groups per Calendar Year

SITE	YEAR			TOTAL ASR (%)
	2005 ASR (%)	2006 ASR (%)	2007 ASR (%)	
MALES				
Lip, oral cavity, and pharynx (C00-C14)	10.4 (3.0)	9.8 (2.9)	10.2 (3.1)	10.1 (3.0)
Digestive organs (C15-C26)	75.8 (21.8)	74.6 (22.0)	74.5 (22.8)	75.0 (22.2)
Respiratory organs (C30-C39)	62.4 (17.9)	60.4 (17.8)	53.5 (16.3)	58.7 (17.4)
Bone, cartilage, and skin (C40-C44)	44.9 (12.9)	48.4 (14.3)	45.5 (13.9)	46.2 (13.7)
Breast (C50)	0.6 (0.2)	0.7 (0.2)	0.8 (0.3)	0.7 (0.2)
Male genitalia (C60-C63)	67.3 (19.4)	67.6 (19.9)	65.5 (20.0)	66.8 (19.8)
Urinary organs (C64-C68)	30.7 (8.8)	28.1 (8.3)	30.8 (9.4)	29.8 (8.8)
Eye, brain, and thyroid (C69-C75)	9.5 (2.7)	8.6 (2.5)	7.7 (2.4)	8.6 (2.6)
Hematopoietic (C81-C96)	24.4 (7.0)	21.6 (6.4)	20.1 (6.1)	22.0 (6.5)
Other and unspecified	21.8 (6.3)	19.4 (5.7)	18.8 (5.7)	20.0 (5.9)
All sites	347.7 (100.0)	339.1 (100.0)	327.3 (100.0)	337.9 (100.0)
FEMALES				
Lip, oral cavity, and pharynx (C00-C14)	2.7 (1.1)	2.4 (1.0)	2.3 (1.0)	2.5 (1.0)
Digestive organs (C15-C26)	49.7 (19.9)	45.0 (18.5)	47.1 (19.6)	47.2 (19.3)
Respiratory organs (C30-C39)	9.6 (3.8)	11.0 (4.5)	10.7 (4.5)	10.4 (4.3)
Bone, cartilage, and skin (C40-C44)	30.0 (12.0)	30.2 (12.4)	31.7 (13.2)	30.6 (12.5)
Breast (C50)	68.3 (27.3)	67.1 (27.5)	67.6 (28.1)	67.7 (27.7)
Female genitalia (C51-C58)	39.0 (15.6)	39.5 (16.2)	34.4 (14.3)	37.6 (15.4)
Urinary organs (C64-C68)	9.6 (3.9)	8.2 (3.4)	9.8 (4.1)	9.2 (3.8)
Eye, brain, and thyroid (C69-C75)	10.4 (4.2)	13.3 (5.4)	11.4 (4.8)	11.7 (4.8)
Hematopoietic (C81-C96)	17.5 (7.0)	14.4 (5.9)	13.4 (5.6)	15.1 (6.2)
Other and unspecified	13.1 (5.2)	12.6 (5.2)	11.8 (4.9)	12.5 (5.1)
All sites	249.9 (100.0)	243.7 (100.0)	240.3 (100.0)	244.6 (100.0)
BOTH SEXES				
Lip, oral cavity, and pharynx (C00-C14)	6.2 (2.1)	5.7 (2.0)	5.9 (2.1)	5.9 (2.1)
Digestive organs (C15-C26)	60.8 (21.0)	57.8 (20.5)	59.1 (21.5)	59.2 (21.0)
Respiratory organs (C30-C39)	32.9 (11.4)	32.9 (11.6)	29.5 (10.7)	31.8 (11.3)
Bone, cartilage, and skin (C40-C44)	36.2 (12.5)	37.8 (13.4)	37.2 (13.5)	37.1 (13.1)
Urinary organs (C64-C68)	18.8 (6.5)	16.9 (6.0)	19.0 (6.9)	18.2 (6.5)
Eye, brain, and thyroid (C69-C75)	10.0 (3.4)	11.0 (3.9)	9.6 (3.5)	10.2 (3.6)
Hematopoietic (C81-C96)	20.6 (7.1)	17.7 (6.3)	16.5 (6.0)	18.2 (6.5)
Other and unspecified	16.9 (5.8)	15.5 (5.5)	14.8 (5.4)	15.7 (5.6)
All sites	289.6 (100.0)	282.4 (100.0)	275.0 (100.0)	282.2 (100.0)

URUGUAY (2005-2007) Incidence per 100,000 by Age Group (years) Males

SITE	ALL CASES	UNK AGE	0-4	5-9	10-14	15-19	20-24	25-29	30-34	35-39	40-44	45-49	50-54	55-59	60-64	65-69	70-74	75+	CRUDE RATE	ASR (W)	CUM. RATE (0-74)†	MV (%)	DCO (%)	Rank‡	ICD10
Lip, oral cavity, and pharynx (C00-14)	606	0	.	0.2	0.2	1.0	0.5	0.6	0.6	2.6	6.2	14.4	21.8	37.9	54.8	58.1	44.3	52.5	12.6	10.1	1.22	87	11	9	C00-14
Oesophagus (C15)	596	0	.	.	.	0.3	.	.	0.3	0.3	2.6	11.3	12.2	27.2	33.5	53.3	72.0	92.1	12.4	8.8	1.06	72	15	11	C15
Stomach (C16)	960	2	.	0.2	.	0.2	0.3	1.4	0.6	2.9	7.5	17.2	25.2	40.6	48.2	82.6	103.1	150.5	20.0	14.3	1.65	80	15	6	C16
Colon (C18)	1586	2	.	.	.	0.2	0.8	1.4	3.2	6.9	6.6	12.4	35.1	52.2	90.8	128.7	178.6	288.2	33.0	22.6	2.59	84	12		C18
Rectum (C19-20)	780	1	0.8	0.3	1.6	6.2	8.6	16.4	29.0	47.2	81.4	92.0	117.8	16.2	11.6	1.42	91	6		C19-20
Colorectal (C18-20)	2366	3	.	.	0.2	0.8	2.2	3.5	8.5	8.5	12.8	20.9	51.6	81.2	137.9	210.1	270.6	406.0	49.3	34.2	4.01	86	10	3	C18-20
Anus (C21)	62	0	0.3	.	1.6	2.1	0.4	1.8	3.0	4.8	8.3	8.7	1.3	0.9	0.11	92	2	23	C21
Colon, rectum and anus (C18-21)	2428	3	.	.	0.2	0.8	2.2	3.8	8.5	8.5	14.4	23.0	52.0	83.0	140.9	214.9	278.9	414.7	50.5	35.2	4.12	86	10		C18-21
Liver (C22)	197	0	0.3	1.0	1.4	3.4	8.0	11.2	21.0	27.7	29.9	4.1	2.9	0.37	45	26	17	C22
Gallbladder (C23-24)	195	0	0.7	1.6	2.1	2.7	6.7	10.6	15.6	24.9	35.4	4.1	2.8	0.32	57	24	18	C23-24
Pancreas (C25)	623	0	0.8	.	.	2.0	2.6	6.2	17.6	26.8	39.0	49.7	80.3	94.8	13.0	9.2	1.12	30	35	10	C25
Nose, sinuses (C30-31)	34	0	0.3	0.3	1.1	2.7	2.0	1.2	4.2	5.1	0.7	0.5	0.06	76	15	25	C30-31
Larynx (C32)	450	0	0.3	2.0	3.0	7.2	13.8	23.6	40.1	43.7	50.5	45.6	9.4	7.2	0.92	84	15	12	C32
Lung, trachea and bronchus (C33-34)	3193	3	.	.	0.2	0.3	0.6	1.5	3.9	10.2	10.2	41.5	95.9	184.7	248.4	335.8	359.2	360.0	66.5	50.1	6.42	57	22	2	C33-34
Melanoma of skin (C43)	301	0	.	.	.	0.5	1.4	1.5	2.6	5.6	5.5	8.4	9.4	9.4	13.2	25.7	31.1	41.9	6.3	4.6	0.52	100	0	16	C43
Mesothelioma (C45)	19	0	0.3	0.3	0.3	1.0	.	.	1.0	1.2	2.8	2.3	0.4	0.3	0.03	100	0	27	C45
Kaposi sarcoma (C46)	25	0	.	.	.	0.3	1.1	1.8	1.6	1.6	0.7	.	0.8	0.4	0.5	.	0.7	0.9	0.5	0.5	0.04	100	0	26	C46
Breast (C50)	50	0	0.3	0.3	0.3	0.3	.	1.0	1.9	1.3	1.5	3.6	4.8	9.2	1.0	0.7	0.08	76	22	24	C50
Penis (C60)	96	0	0.3	.	1.6	3.1	1.1	6.2	8.1	4.8	11.1	11.0	2.0	1.5	0.18	96	4	22	C60
Prostate (C61)	4287	2	0.3	.	.	0.7	3.0	11.7	39.3	116.0	257.0	457.4	630.5	779.8	89.2	59.8	7.58	82	13	1	C61
Testis (C62)	269	0	0.5	.	0.2	2.0	8.2	14.0	15.8	17.0	8.5	5.8	2.7	2.2	2.0	0.6	2.8	2.8	5.6	5.3	0.41	95	3	15	C62
Kidney (C64)	827	0	1.3	0.2	.	.	.	0.3	2.3	4.6	10.2	15.4	29.0	46.0	67.9	70.0	72.7	86.1	17.2	13.4	1.60	80	12	7	C64
Bladder (C67)	1103	1	.	.	.	0.2	0.3	0.8	1.2	0.7	3.0	9.3	17.2	46.0	68.4	94.0	132.9	194.7	23.0	15.8	1.87	86	11	5	C67
Brain, CNS (C70-72)	346	0	1.9	3.2	2.6	1.5	2.4	3.0	1.8	5.6	5.2	8.6	11.1	12.5	21.8	23.3	24.9	23.0	7.2	6.2	0.65	70	16	14	C70-72
Thyroid (C73)	91	0	.	.	.	0.7	0.5	0.3	1.8	2.0	1.6	3.8	4.2	6.2	5.1	3.6	4.2	4.6	1.9	1.6	0.17	91	7	21	C73
Hodgkin disease (C81)	89	0	0.5	1.2	1.7	3.2	2.5	2.1	2.6	3.0	1.4	0.8	1.8	1.8	2.0	2.4	1.4	1.4	1.9	1.8	0.14	100	0	20	C81
Non-Hodgkin lymphoma (C82-85,C96)	647	0	1.1	1.2	1.2	2.2	3.7	4.4	5.9	7.5	11.1	12.7	19.1	33.5	33.5	58.1	40.1	61.7	13.5	10.9	1.18	98	0	8	C82-85,C96
Multiple myeloma (C88-C90)	177	0	0.3	.	.	.	1.6	1.0	4.2	6.7	14.2	14.4	23.5	25.8	3.7	2.6	0.33	100	0	19	C88-C90
Lymphoid leukaemia (C91)	177	0	2.7	3.9	1.7	0.7	1.1	1.1	0.3	1.3	1.0	1.0	1.1	4.5	8.6	10.8	11.1	26.7	3.7	3.0	0.25	100	0		C91
Myeloid leukaemia (C92-94)	190	0	1.1	0.7	1.2	0.7	0.5	1.1	1.2	2.6	2.3	4.5	4.6	8.5	7.6	15.0	15.9	19.8	4.0	3.2	0.34	100	0		C92-94
Leukaemia unspecified (C95)	37	0	.	.	.	0.2	.	0.3	.	0.3	0.3	0.3	0.8	0.4	3.0	0.6	4.8	6.9	0.8	0.5	0.06	81	0		C95
Leukaemia (C91-95)	404	0	3.7	4.6	2.9	1.7	1.6	2.5	1.5	4.3	3.6	5.8	6.5	13.4	19.3	26.3	31.8	53.4	8.4	6.7	0.65	98	0	13	C91-95
Other and unspecified (O&U)	1234	2	0.5	0.5	0.2	1.1	0.6	1.5	2.0	2.0	3.6	8.9	25.2	43.3	72.0	89.8	141.9	235.7	25.7	17.4	1.96	35	36	4	O&U
All sites but C44 (ALLbC44)	19655	14	14.1	12.7	12.0	14.8	26.5	39.9	47.5	78.9	116.4	227.8	425.2	802.6	1233.0	1778.0	2245.8	2863.9	409.2	297.2	35.40	75	15		ALLbC44
All sites (ALL)	22533	14	14.1	12.9	12.0	15.6	27.3	42.4	55.7	85.5	138.0	261.5	492.8	883.8	1377.5	1988.7	2578.0	3394.3	469.1	337.9	39.95	78	13		ALL

UNK, Unknown; ASR (W), Age Standardized Rate (World Population); CUM., Cumulative; MV, Microscopic Verification; DCO, Death Certificate Only

†Percent

‡Rank based on highest ASR excluding: All sites but C44 and All sites

URUGUAY (2005-2007)
Incidence per 100,000 by Age Group (years)
Females

SITE	ALL CASES	UNK AGE	0-4	5-9	10-14	15-19	20-24	25-29	30-34	35-39	40-44	45-49	50-54	55-59	60-64	65-69	70-74	75+	CRUDE RATE	ASR (W)	CUM. RATE (0-74)†	MV (%)	DCO (%)	Rank‡	ICD10
Lip, oral cavity, and pharynx (C00-14)	202	0	.	0.8	0.3	0.3	0.5	0.8	0.6	0.9	2.5	3.6	6.0	6.4	9.2	7.2	12.4	19.0	3.9	2.5	0.26	90	8	19	C00-14
Oesophagus (C15)	281	0	0.3	0.6	0.9	1.6	2.1	7.6	13.6	10.1	22.9	37.7	5.5	2.7	0.30	68	19	18	C15
Stomach (C16)	648	0	0.5	0.5	3.7	1.9	6.5	5.5	10.9	16.0	25.8	33.1	36.8	80.6	12.6	6.7	0.71	77	17	9	C16
Colon (C18)	1759	0	.	.	.	0.8	1.1	1.4	5.4	3.1	11.8	15.9	27.9	40.5	76.6	82.9	127.2	217.4	34.2	17.9	1.97	80	14	7	C18
Rectum (C19-20)	630	0	1.1	2.6	2.5	4.0	6.8	11.7	19.6	25.8	35.9	45.7	68.5	12.3	6.8	0.78	90	7	7	C19-20
Colorectal (C18-20)	2389	0	.	.	0.8	1.1	2.4	2.4	8.0	5.6	15.8	22.7	39.5	60.1	102.5	118.8	172.9	285.9	46.5	24.7	2.75	83	13	2	C18-20
Anus (C21)	73	0	0.3	.	0.3	0.6	1.6	1.4	1.6	3.1	5.3	5.0	7.4	1.4	0.8	0.09	90	4	23	C21
Colon, rectum and anus (C18-21)	2462	0	.	.	0.8	1.1	2.4	2.4	8.3	5.6	16.5	24.4	41.0	61.7	105.5	124.1	177.9	293.3	47.9	25.5	2.85	83	12	7	C18-21
Liver (C22)	91	0	.	.	0.3	0.3	0.6	.	0.7	3.6	4.8	2.9	6.5	11.8	1.8	0.9	0.10	45	37	22	C22
Gallbladder (C23-24)	358	0	0.3	0.9	2.6	2.6	6.7	7.2	14.5	24.0	35.8	39.5	7.0	3.7	0.46	52	29	15	C23-24
Pancreas (C25)	641	2	0.3	0.6	0.3	1.9	5.8	11.7	14.4	25.4	43.1	44.7	78.0	12.5	6.5	0.74	28	38	10	C25
Nose, sinuses (C30-31)	26	0	0.3	.	0.3	.	0.3	0.4	1.2	1.8	1.4	2.0	2.3	0.5	0.3	0.04	88	8	25	C30-31
Larynx (C32)	44	0	0.3	.	0.6	0.6	.	0.4	2.0	2.2	3.4	2.0	4.4	0.9	0.5	0.06	75	20	24	C32
Lung, trachea and bronchus (C33-34)	731	0	.	.	.	0.3	0.5	0.6	1.3	6.2	6.2	16.2	20.1	34.5	42.5	46.0	50.7	54.9	14.2	9.1	1.09	61	21	5	C33-34
Melanoma of skin (C43)	277	0	0.6	.	.	0.5	0.5	1.9	2.3	4.4	5.0	6.2	10.2	5.6	9.2	15.8	14.4	21.3	5.4	3.6	0.38	100	0	16	C43
Mesothelioma (C45)	10	0	0.3	0.4	0.4	0.9	.	0.5	1.0	0.2	0.1	0.01	100	0	26	C45
Kaposi sarcoma (C46)	7	0	0.6	0.3	.	.	.	0.4	.	.	.	0.5	0.5	0.1	0.1	0.01	100	0	27	C46
Breast (C50)	5055	2	.	.	.	1.3	7.6	24.6	52.1	99.4	161.8	164.9	213.1	213.1	237.3	271.7	288.2	323.9	98.3	67.7	7.61	90	8	1	C50
Cervix uteri (C53)	1049	0	.	.	0.8	4.0	13.8	22.9	39.2	38.2	39.3	47.0	34.1	38.5	27.3	27.3	30.3	27.5	20.4	17.1	1.68	91	5	3	C53
Corpus uteri (C54)	701	0	.	.	0.3	.	1.4	0.6	3.4	5.9	11.7	21.9	30.0	30.0	45.1	44.6	48.7	50.3	13.6	8.8	1.07	93	4	6	C54
Ovary (C56)	626	0	0.3	0.3	0.8	1.5	2.2	2.4	3.1	4.4	12.4	14.0	19.1	22.8	29.3	36.9	35.8	41.8	12.2	8.4	0.93	74	18	7	C56
Kidney (C64)	455	1	0.6	1.1	1.4	2.8	5.0	7.5	12.7	18.4	23.2	28.3	35.8	33.1	8.9	5.7	0.69	76	17	12	C64
Bladder (C67)	337	1	0.3	0.6	0.6	1.2	1.3	6.4	9.6	9.6	13.6	14.9	21.4	45.2	6.6	3.3	0.35	84	12	17	C67
Brain, CNS (C70-72)	276	0	2.2	2.5	1.8	0.3	1.6	1.9	2.6	2.2	1.9	5.5	6.4	9.2	12.7	18.2	10.4	17.7	5.4	4.0	0.40	62	21	14	C70-72
Thyroid (C73)	412	0	.	0.3	0.3	2.1	2.2	8.1	10.6	12.5	11.8	17.2	11.7	18.0	12.3	10.1	14.4	10.3	8.0	6.8	0.66	97	2	8	C73
Hodgkin disease (C81)	91	0	.	0.5	1.3	3.1	2.7	1.6	1.7	3.1	0.9	1.9	1.1	1.2	1.3	1.4	3.5	3.1	1.8	1.6	0.13	100	0	21	C81
Non-Hodgkin lymphoma (C82-85,C96)	544	0	0.6	0.3	0.3	1.0	2.4	1.1	2.3	5.0	5.6	6.2	7.4	14.0	25.4	35.5	40.7	49.3	10.6	6.4	0.74	98	0	11	C82-85,C96
Multiple myeloma (C88-C90)	186	0	0.3	1.2	1.0	4.2	6.8	6.6	10.5	13.9	21.6	3.6	1.9	0.22	100	0	20	C88-C90
Lymphoid leukaemia (C91)	133	0	4.7	1.3	2.3	1.3	0.8	.	.	0.9	0.6	1.0	1.1	3.2	3.1	4.8	8.9	10.3	2.6	2.1	0.17	100	0	9	C91
Myeloid leukaemia (C92-94)	175	0	0.3	0.3	0.5	0.8	3.2	1.4	1.4	3.1	1.9	4.5	4.9	4.8	3.5	7.7	11.4	11.0	3.4	2.5	0.25	100	0	7	C92-94
Leukaemia unspecified (C95)	57	0	0.5	.	0.6	.	0.6	0.6	1.1	0.4	2.2	3.4	2.5	7.2	1.1	0.6	0.06	82	0	7	C95
Leukaemia (C91-95)	365	0	5.0	1.5	2.8	2.1	4.6	1.4	2.0	4.1	3.1	6.2	7.1	8.4	8.8	15.8	22.9	28.5	7.1	5.1	0.48	97	0	13	C91-95
Other and unspecified (O&U)	1159	0	2.0	.	0.5	0.8	0.8	0.8	1.7	3.4	4.3	8.8	14.5	22.4	35.0	55.6	69.6	167.6	22.5	10.9	1.10	35	40	4	O&U
All sites but C44 (ALLbC44)	17688	6	17.0	7.1	9.0	15.9	27.8	51.5	95.6	152.1	237.1	358.6	450.8	585.7	769.4	910.9	1081.2	1525.1	344.1	218.2	23.86	79	14	7	ALLbC44
All sites (ALL)	20156	7	17.0	7.1	9.0	16.4	29.4	53.1	103.3	164.9	266.9	393.3	490.4	655.4	853.5	1034.1	1255.1	1806.7	392.1	244.6	26.75	82	12	7	ALL

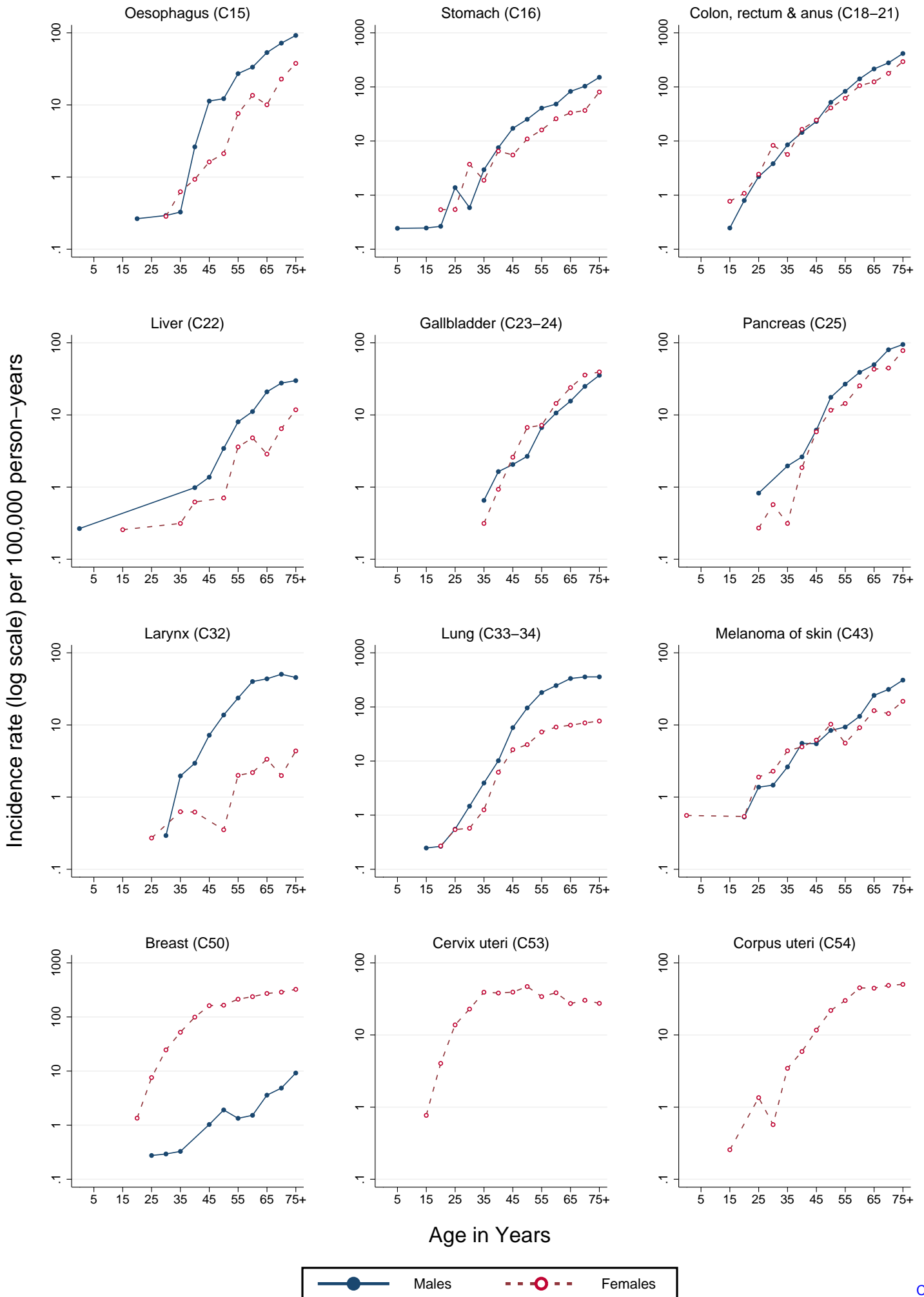
UNK, Unknown; ASR (W), Age Standardized Rate (World Population); CUM., Cumulative; MV, Microscopic Verification; DCO, Death Certificate Only

†Percent

‡Rank based on highest ASR excluding: All sites but C44 and All sites

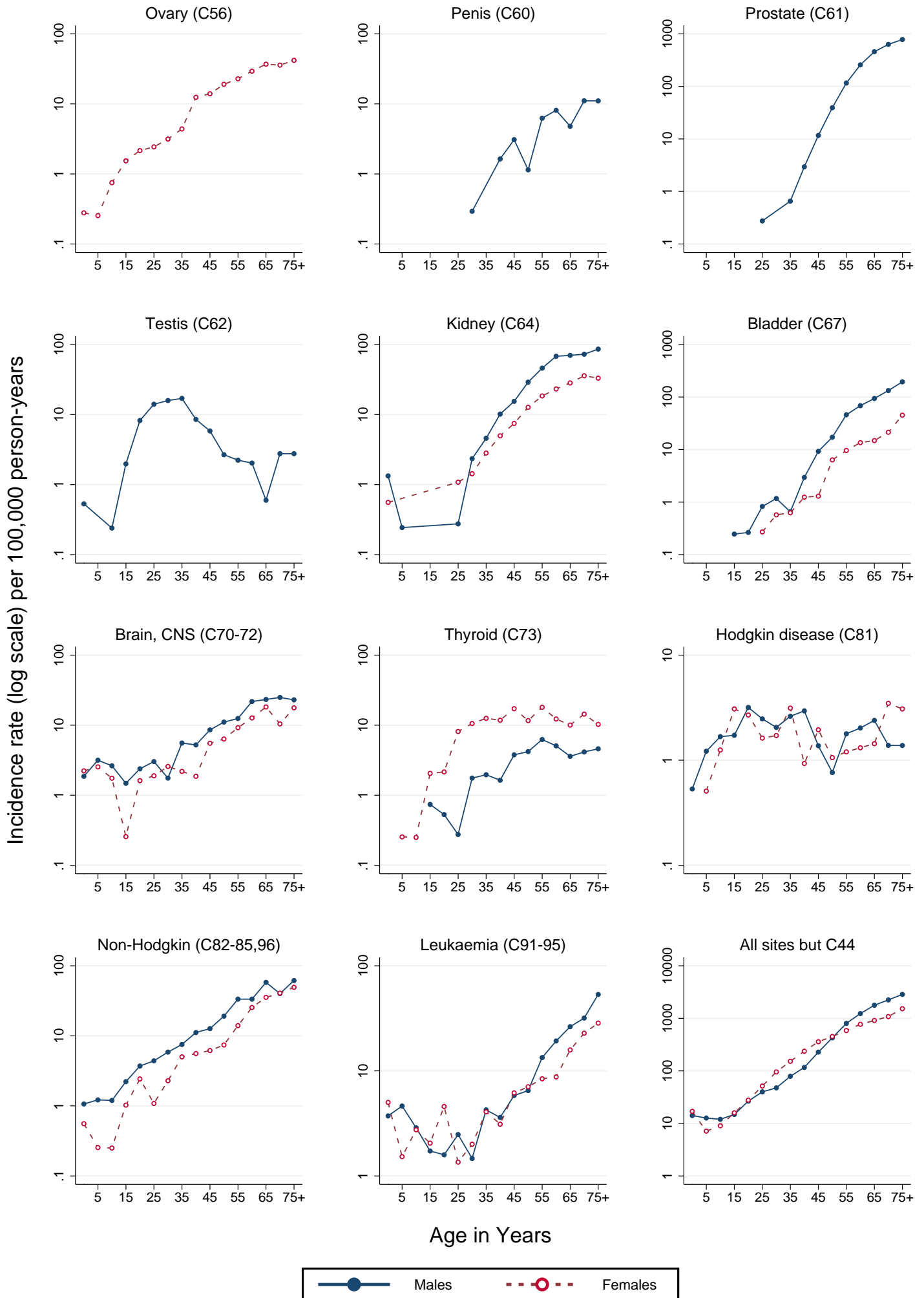
URUGUAY (2005–2007)

Age-specific incidence rates per 100,000 person-years



URUGUAY (2005-2007)

Age-specific incidence rates per 100,000 person-years



URUGUAY (2003,2004,2007)
Number of Deaths in Major Diagnosis Groups
per Calendar Year

SITE	YEAR			TOTAL n (%)
	2003 n (%)	2004 n (%)	2007 n (%)	
MALES				
Lip, oral cavity, and pharynx (C00-C14)	107 (2.5)	125 (3.0)	110 (2.6)	342 (2.7)
Digestive organs (C15-C26)	1627 (38.3)	1550 (37.2)	1719 (40.3)	4896 (38.6)
Respiratory organs (C30-C39)	1131 (26.6)	1042 (25.0)	1076 (25.2)	3249 (25.6)
Bone, cartilage, and skin (C40-C44)	34 (0.8)	31 (0.7)	18 (0.4)	83 (0.7)
Male genitalia (C60-C63)	639 (15.0)	660 (15.9)	594 (13.9)	1893 (14.9)
Urinary organs (C64-C68)	287 (6.7)	288 (6.9)	304 (7.1)	879 (6.9)
Eye, brain, and thyroid (C69-C75)	65 (1.5)	60 (1.4)	86 (2.0)	211 (1.7)
Hematopoietic (C81-C96)	251 (5.9)	295 (7.1)	273 (6.4)	819 (6.5)
All sites	4253 (100.0)	4162 (100.0)	4264 (100.0)	12679 (100.0)
FEMALES				
Lip, oral cavity, and pharynx (C00-C14)	35 (1.1)	28 (0.9)	33 (1.0)	96 (1.0)
Digestive organs (C15-C26)	1486 (46.5)	1491 (46.8)	1524 (48.0)	4501 (47.1)
Respiratory organs (C30-C39)	206 (6.4)	209 (6.6)	224 (7.1)	639 (6.7)
Bone, cartilage, and skin (C40-C44)	14 (0.4)	16 (0.5)	16 (0.5)	46 (0.5)
Breast (C50)	581 (18.2)	610 (19.1)	608 (19.2)	1799 (18.8)
Female genitalia (C51-C58)	375 (11.7)	330 (10.4)	342 (10.8)	1047 (11.0)
Urinary organs (C64-C68)	107 (3.3)	100 (3.1)	100 (3.2)	307 (3.2)
Eye, brain, and thyroid (C69-C75)	63 (2.0)	55 (1.7)	62 (2.0)	180 (1.9)
Hematopoietic (C81-C96)	251 (7.9)	254 (8.0)	212 (6.7)	717 (7.5)
All sites	3195 (100.0)	3186 (100.0)	3172 (100.0)	9553 (100.0)
BOTH SEXES				
Lip, oral cavity, and pharynx (C00-C14)	142 (1.9)	153 (2.1)	143 (1.9)	438 (2.0)
Digestive organs (C15-C26)	3113 (41.8)	3041 (41.4)	3243 (43.6)	9397 (42.3)
Respiratory organs (C30-C39)	1337 (18.0)	1251 (17.0)	1300 (17.5)	3888 (17.5)
Bone, cartilage, and skin (C40-C44)	48 (0.6)	47 (0.6)	34 (0.5)	129 (0.6)
Urinary organs (C64-C68)	394 (5.3)	388 (5.3)	404 (5.4)	1186 (5.3)
Eye, brain, and thyroid (C69-C75)	128 (1.7)	115 (1.6)	148 (2.0)	391 (1.8)
Hematopoietic (C81-C96)	502 (6.7)	549 (7.5)	485 (6.5)	1536 (6.9)
All sites	7448 (100.0)	7348 (100.0)	7436 (100.0)	22232 (100.0)

URUGUAY (2003,2004,2007)
Age Standardized Mortality Rate (World Population) per 100,000
in Major Diagnosis Groups per Calendar Year

SITE	YEAR			TOTAL ASMR (%)
	2003 ASMR (%)	2004 ASMR (%)	2007 ASMR (%)	
MALES				
Lip, oral cavity, and pharynx (C00-C14)	5.3 (2.9)	6.3 (3.5)	5.3 (2.9)	5.7 (3.1)
Digestive organs (C15-C26)	69.1 (37.2)	66.0 (36.8)	72.1 (39.9)	69.0 (38.0)
Respiratory organs (C30-C39)	53.2 (28.7)	47.8 (26.7)	48.8 (27.0)	49.9 (27.5)
Bone, cartilage, and skin (C40-C44)	1.4 (0.8)	1.4 (0.8)	0.8 (0.4)	1.2 (0.7)
Male genitalia (C60-C63)	23.6 (12.7)	23.8 (13.3)	20.0 (11.1)	22.5 (12.4)
Urinary organs (C64-C68)	12.3 (6.6)	11.9 (6.7)	12.5 (6.9)	12.2 (6.7)
Eye, brain, and thyroid (C69-C75)	3.3 (1.8)	3.1 (1.7)	4.3 (2.4)	3.6 (2.0)
Hematopoietic (C81-C96)	11.2 (6.0)	13.8 (7.7)	12.3 (6.8)	12.4 (6.8)
All sites	185.6 (100.0)	179.1 (100.0)	180.6 (100.0)	181.7 (100.0)
FEMALES				
Lip, oral cavity, and pharynx (C00-C14)	1.0 (1.0)	0.9 (0.9)	0.9 (0.9)	0.9 (0.9)
Digestive organs (C15-C26)	40.9 (40.7)	41.3 (42.0)	39.4 (41.2)	40.5 (41.3)
Respiratory organs (C30-C39)	7.2 (7.2)	7.3 (7.4)	7.8 (8.2)	7.4 (7.6)
Bone, cartilage, and skin (C40-C44)	0.6 (0.6)	0.6 (0.6)	0.5 (0.5)	0.6 (0.6)
Breast (C50)	20.1 (20.0)	20.8 (21.1)	20.4 (21.4)	20.5 (20.8)
Female genitalia (C51-C58)	14.0 (13.9)	11.6 (11.8)	12.3 (12.9)	12.6 (12.9)
Urinary organs (C64-C68)	3.1 (3.1)	2.8 (2.8)	2.8 (2.9)	2.9 (2.9)
Eye, brain, and thyroid (C69-C75)	2.6 (2.6)	2.2 (2.2)	2.1 (2.2)	2.3 (2.3)
Hematopoietic (C81-C96)	8.3 (8.3)	8.2 (8.3)	6.3 (6.6)	7.6 (7.7)
All sites	100.6 (100.0)	98.5 (100.0)	95.5 (100.0)	98.2 (100.0)
BOTH SEXES				
Lip, oral cavity, and pharynx (C00-C14)	2.9 (2.2)	3.3 (2.5)	2.9 (2.2)	3.0 (2.3)
Digestive organs (C15-C26)	53.0 (38.9)	51.8 (39.2)	53.6 (40.8)	52.8 (39.6)
Respiratory organs (C30-C39)	27.3 (20.0)	24.9 (18.8)	25.6 (19.5)	25.9 (19.5)
Bone, cartilage, and skin (C40-C44)	0.9 (0.7)	0.9 (0.7)	0.6 (0.5)	0.8 (0.6)
Urinary organs (C64-C68)	7.0 (5.1)	6.6 (5.0)	6.9 (5.3)	6.8 (5.1)
Eye, brain, and thyroid (C69-C75)	2.9 (2.1)	2.6 (2.0)	3.2 (2.4)	2.9 (2.2)
Hematopoietic (C81-C96)	9.5 (7.0)	10.7 (8.1)	9.0 (6.8)	9.7 (7.3)
All sites	136.4 (100.0)	132.2 (100.0)	131.4 (100.0)	133.3 (100.0)

URUGUAY (2003,2004,2007)
Mortality per 100,000 by Age Group (years)
Males

SITE	ALL DEATHS	UNK AGE	0-4	5-9	10-14	15-19	20-24	25-29	30-34	35-39	40-44	45-49	50-54	55-59	60-64	65-69	70-74	75+	CRUDE RATE	ASMR (W)	CUM. RATE (0-74)†	Rank‡	ICD10
Lip, oral cavity, & pharynx (C00-14)	342	0	0.3	.	.	0.3	0.3	0.3	0.6	1.0	2.0	7.3	11.0	18.5	33.3	36.4	31.1	29.1	7.1	5.7	0.7	8	C00-14
Oesophagus (C15)	578	0	0.6	0.7	6.3	12.5	22.5	42.9	46.4	56.8	105.6	12.0	8.3	0.9	5	C15
Stomach (C16)	776	0	0.3	.	.	0.5	.	1.3	0.3	2.3	3.6	8.0	18.0	33.1	41.9	67.6	84.5	132.3	16.1	11.3	1.3	3	C16
Colon (C18)	994	0	.	.	.	0.5	0.3	1.1	0.3	1.6	3.3	6.3	12.5	25.1	44.9	75.8	123.1	217.8	20.6	13.4	1.5		C18
Rectum (C19-C20)	0	0	0.0	0.0	0.0		C19-C20
Colorectal (C18-20)	0	0	0.0	0.0	0.0	25	C18-20
Rectum and anus (C19-21)	304	0	0.3	0.8	0.3	0.3	1.0	3.1	7.8	11.0	14.1	26.4	39.2	51.6	6.3	4.4	0.5	12	C19-21
Colon, rectum and anus (C18-21)	1298	0	.	.	.	0.5	0.5	1.9	0.6	1.9	4.3	9.4	20.3	36.2	59.0	102.2	162.3	269.4	26.9	17.7	2.0		C18-21
Liver (C22)	179	0	0.3	0.7	0.7	3.1	6.6	13.1	20.6	25.7	24.4	3.7	2.7	0.4	14	C22
Gallbladder (C23-24)	163	0	0.3	1.0	2.0	4.9	15.1	14.1	15.6	31.0	3.4	2.3	0.3	16	C23-24
Pancreas (C25)	586	0	0.3	0.3	0.6	1.3	2.6	5.2	16.8	23.8	31.8	56.4	73.7	89.2	12.2	8.6	1.1	4	C25
Nose, sinuses (C30-31)	0	0	0.0	0.0	0.0	25	C30-31
Larynx (C32)	345	0	.	.	.	0.3	.	.	.	0.3	1.0	3.8	8.2	19.0	29.3	40.0	36.5	39.9	7.2	5.4	0.7	9	C32
Lung, trachea and bronchus (C33-34)	2904	0	0.8	0.3	2.3	3.9	13.7	34.1	86.8	137.2	227.5	264.4	337.4	378.7	60.3	44.5	5.5	1	C33-34
Melanoma of skin (C43)	83	0	0.6	0.3	1.4	2.0	2.6	5.5	7.1	6.1	15.5	1.7	1.2	0.1	17	C43
Mesothelioma (C45)	17	0	0.3	0.3	0.4	.	2.0	1.2	2.7	1.9	0.4	0.3	0.0	21	C45
Kaposi sarcoma (C46)	0	0	0.0	0.0	0.0	25	C46
Breast (C50)	0	0	0.0	0.0	0.0	25	C50
Penis (C60)	0	0	0.0	0.0	0.0	25	C60
Prostate (C61)	1858	0	0.3	.	.	1.0	1.7	5.5	15.9	53.0	100.5	213.0	566.9	38.6	21.8	2.0	2	C61
Testis (C62)	35	0	0.2	.	.	0.3	1.1	1.1	1.4	2.3	1.3	0.3	.	0.9	1.0	0.6	0.7	0.9	0.7	0.7	0.1	18	C62
Kidney (C64)	426	0	0.3	0.5	.	0.3	2.3	4.9	11.0	18.1	27.7	40.0	46.0	66.2	8.8	6.3	0.8	6	C64
Bladder (C67)	453	0	0.3	2.8	2.3	8.4	21.7	35.3	59.5	107.0	9.4	5.9	0.7	7	C67
Brain, CNS (C70-72)	185	0	1.3	1.0	0.7	1.3	0.3	0.3	1.4	1.6	2.0	4.5	7.4	5.7	12.6	12.9	16.2	16.0	3.8	3.2	0.3	13	C70-72
Thyroid (C73)	26	0	0.5	.	.	.	0.3	.	2.6	1.0	2.4	0.7	4.7	0.5	0.4	0.0	20	C73
Hodgkin disease (C81)	28	0	.	0.2	0.2	.	.	0.8	0.9	1.0	.	0.3	0.4	1.3	2.0	0.6	1.4	2.3	0.6	0.5	0.0	19	C81
Non-Hodgkin lymphoma (C82-85,C96)	314	0	.	0.2	0.8	0.5	0.5	1.4	3.5	3.5	3.3	4.9	9.4	11.0	16.6	27.6	29.1	44.1	6.5	4.8	0.5	10	C82-85,C96
Multiple myeloma (C88+C90)	165	0	0.6	1.3	0.7	1.6	8.4	10.1	14.7	16.2	30.5	3.4	2.4	0.3	15	C88+C90
Lymphoid leukaemia (C91)	0	0	0.0	0.0	0.0	0.0	C91
Myeloid leukaemia (C92-94)	0	0	0.0	0.0	0.0	0.0	C92-94
Leukaemia unspecified (C95)	0	0	0.0	0.0	0.0	0.0	C95
Leukaemia (C91-95)	312	0	0.8	1.0	1.5	1.8	1.6	1.6	2.0	1.3	2.6	4.9	6.6	7.1	12.1	23.5	25.0	53.0	6.5	4.7	0.5	11	C91-95
All cancers but lung (C00-97/C33-34)	9775	0	4.8	3.7	3.6	7.7	7.3	11.6	12.6	24.5	40.9	84.8	164.6	298.2	509.4	770.9	1081.3	1932.7	202.9	137.2	15.1		C00-97/C33-34
All sites (ALL)	12679	0	5.6	3.7	3.6	7.7	7.3	11.9	14.9	28.3	54.6	118.8	251.5	435.5	736.9	1035.3	1418.7	2311.4	263.1	181.7	20.7		ALL

UNK, Unknown; ASMR (W), Age Standardized Mortality Rate (World Population); CUM., Cumulative

†Percent

‡Rank based on highest ASMR excluding: All sites but lung and All sites

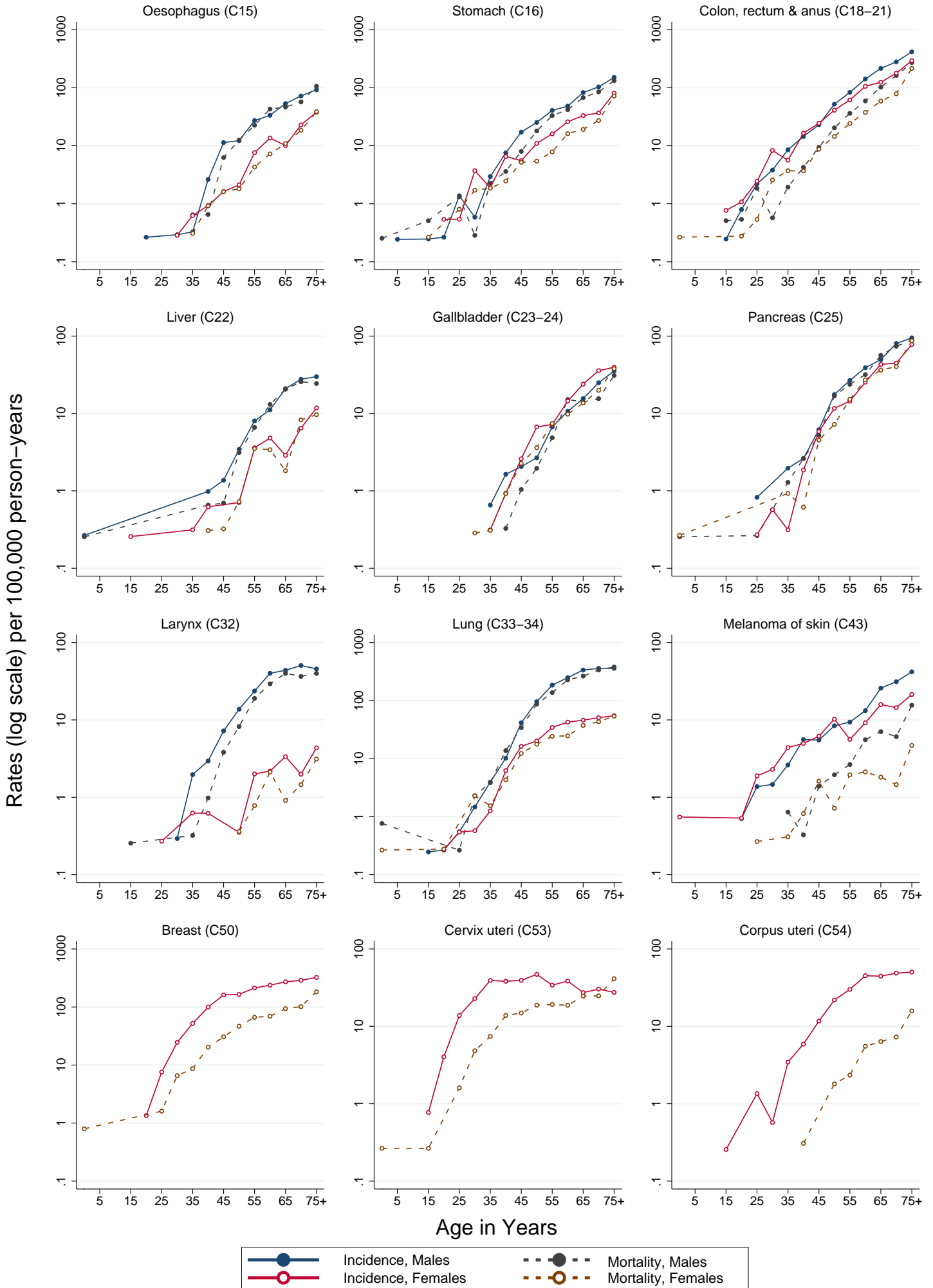
URUGUAY (2003,2004,2007)
Mortality per 100,000 by Age Group (years)
Females

SITE	ALL DEATHS	UNK AGE	0-4	5-9	10-14	15-19	20-24	25-29	30-34	35-39	40-44	45-49	50-54	55-59	60-64	65-69	70-74	75+	CRUDE RATE	ASMR (W)	CUM. RATE (0-74)†	Rank‡	ICD10	
Lip, oral cavity, & pharynx (C00-14)	96	0	0.5	0.6	0.3	1.2	.	1.8	2.0	1.7	4.1	4.9	14.1	1.9	0.9	0.1	16	C00-14	
Oesophagus (C15)	252	0	0.3	0.9	1.6	1.8	4.3	7.2	10.9	18.5	38.5	4.9	2.2	0.2	11	C15	
Stomach (C16)	487	0	.	.	0.3	.	.	0.8	1.7	1.9	2.5	5.2	5.4	7.8	16.2	19.1	27.2	71.8	9.4	4.5	0.4	5	C16	
Colon (C18)	1090	0	0.3	.	.	0.3	0.3	0.3	0.6	2.2	2.5	6.1	11.2	20.7	25.1	45.5	65.1	175.4	21.1	9.3	0.9		C18	
Rectum (C19-C20)	0	0	0.0	0.0	0.0	0.0		C19-C20
Colorectal (C18-20)	0	0	0.0	0.0	0.0	0.0	26	C18-20
Rectum and anus (C19-21)	280	0	0.3	2.0	1.5	1.2	2.6	3.3	3.5	12.3	13.2	13.6	39.3	5.4	2.7	0.3	9	C19-21	
Colon, rectum and anus (C18-21)	1370	0	0.3	.	.	0.3	0.5	0.5	2.6	3.7	3.7	8.7	14.5	24.2	37.4	58.7	78.7	214.7	26.5	12.0	1.2		C18-21	
Liver (C22)	79	0	0.3	0.3	0.3	0.7	3.5	3.4	1.8	8.3	9.6	1.5	0.8	0.1	18	C22	
Gallbladder (C23-24)	281	0	0.3	0.3	0.9	2.3	3.6	7.4	9.8	13.6	19.9	38.0	5.4	2.7	0.3	10	C23-24	
Pancreas (C25)	641	0	0.3	0.9	0.9	0.6	4.5	7.2	15.2	27.2	36.4	40.3	87.2	12.4	6.1	0.7	4	C25	
Nose, sinuses (C30-31)	0	0	0.0	0.0	0.0	0.0	26	C30-31
Larynx (C32)	25	0	0.4	0.8	2.1	0.9	1.5	3.1	0.5	0.3	0.0	21	C32	
Lung, trachea and bronchus (C33-34)	614	0	0.3	.	.	0.3	.	0.3	2.3	1.5	4.3	12.3	17.7	24.2	24.7	37.3	43.2	53.9	11.9	7.2	0.8	2	C33-34	
Melanoma of skin (C43)	46	0	0.3	.	0.3	0.6	1.6	0.7	2.0	2.1	1.8	1.5	4.7	0.9	0.6	0.1	19	C43	
Mesothelioma (C45)	12	0	.	.	0.3	0.3	0.3	.	0.4	.	1.4	0.5	1.0	0.2	0.1	0.0	23	C45	
Kaposi sarcoma (C46)	0	0	0.0	0.0	0.0	0.0	26	C46
Breast (C50)	1799	0	0.8	1.6	6.6	8.6	20.3	30.7	46.6	66.4	69.4	93.7	101.6	182.5	34.9	20.5	2.2	1	C50	
Cervix uteri (C53)	549	0	0.3	.	0.3	.	.	1.6	4.9	7.4	13.8	14.9	18.8	19.2	18.7	24.6	24.8	41.4	10.6	7.2	0.7	3	C53	
Corpus uteri (C54)	115	0	0.3	.	1.8	2.3	5.5	6.4	7.3	15.9	2.2	1.1	0.1	15	C54	
Ovary (C56)	383	0	0.5	2.0	1.9	2.8	4.5	9.4	10.6	20.4	24.6	28.2	34.4	7.4	4.4	0.5	6	C56	
Kidney (C64)	194	0	0.3	0.5	.	0.3	0.9	2.6	3.6	4.7	9.8	9.1	13.6	22.4	3.8	2.0	0.2	12	C64	
Bladder (C67)	113	0	0.3	0.3	.	1.2	2.6	5.1	5.9	7.7	10.0	4.4	10.4	2.8	1.9	0.2	13	C70-72	
Brain, CNS (C70-72)	143	0	.	0.3	0.3	0.5	0.3	1.1	.	1.2	1.2	2.6	5.1	5.9	7.7	10.0	4.4	10.4	2.8	1.9	0.2	13	C70-72	
Thyroid (C73)	37	0	0.6	0.7	0.8	2.1	2.7	1.9	4.2	0.7	0.4	0.0	20	C73	
Hodgkin disease (C81)	17	0	0.6	0.3	0.3	0.3	0.3	.	0.4	.	0.4	.	1.9	1.3	0.3	0.2	0.0	22	C81	
Non-Hodgkin lymphoma (C82-85,C96)	275	0	0.3	0.3	.	0.5	0.6	0.3	0.9	0.6	2.5	1.3	4.0	10.2	10.2	14.6	23.8	28.4	5.3	3.0	0.3	7	C82-85,C96	
Multiple myeloma (C88+C90)	151	0	0.6	0.7	7.0	5.5	8.6	11.7	19.0	2.9	1.5	0.2	14	C88+C90	
Lymphoid leukaemia (C91)	0	0	0.0	0.0	0.0	0.0		C91
Myeloid leukaemia (C92-94)	0	0	0.0	0.0	0.0	0.0		C92-94
Leukaemia unspecified (C95)	0	0	0.0	0.0	0.0	0.0		C95
Leukaemia (C91-95)	274	0	1.1	0.5	.	1.6	1.4	1.6	1.7	1.5	1.8	1.3	3.3	5.1	6.0	11.8	18.0	34.1	5.3	2.9	0.3	8	C91-95	
All cancers but lung (C00-97/C33-34)	8939	0	4.0	1.8	1.0	4.0	4.7	11.8	24.5	35.5	61.8	95.3	154.7	231.4	310.7	422.0	540.4	1132.2	173.2	91.0	9.5		C00-97/C33-34	
All sites (ALL)	9553	0	4.3	1.8	1.0	4.0	5.0	11.8	26.8	37.1	66.1	107.6	172.4	255.6	335.3	459.3	583.6	1186.1	185.1	98.2	10.4		ALL	

UNK, Unknown; ASMR (W), Age Standardized Mortality Rate (World Population); CUM., Cumulative †Percent ‡Rank based on highest ASMR excluding: All sites but lung and All sites

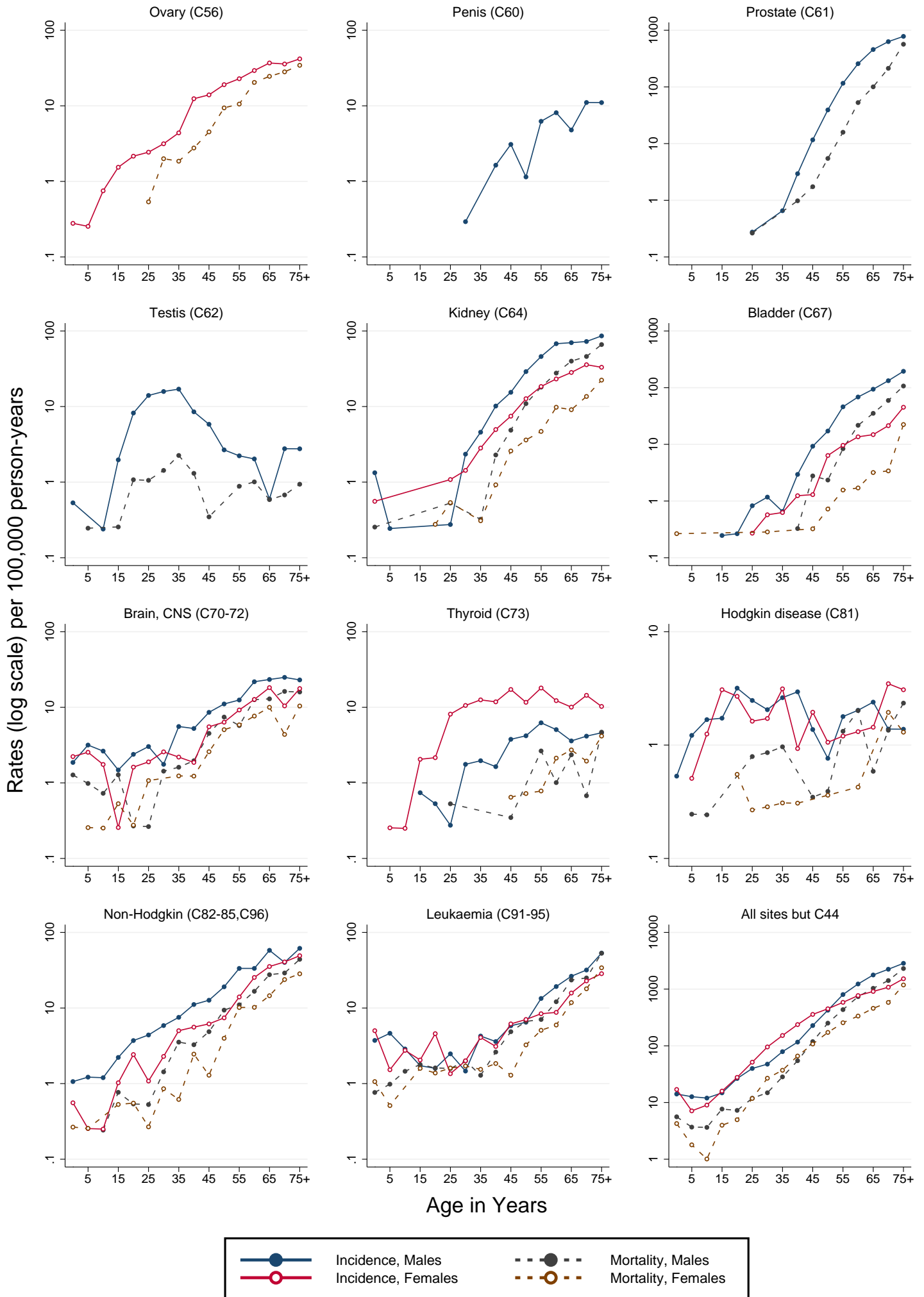
URUGUAY (2003–2007)

Age-specific incidence and mortality rates per 100,000 person-years



URUGUAY (2003-2007)

Age-specific incidence and mortality rates per 100,000 person-years



URUGUAY (2005-2007)

Population Pyramid by Age

