

## Cancer in Central and South America

### ECUADOR

This country profile for the Cancer in Central and South America project provides, for each participating cancer registry tables and graphics showing numbers of cases and rates by year, sex and age group for major sites of cancer together with a population pyramid. A country summary is also provided based on aggregated registry data and national mortality data from the WHO mortality database:

([http://www.who.int/healthinfo/statistics/mortality\\_rawdata/en/index.html](http://www.who.int/healthinfo/statistics/mortality_rawdata/en/index.html))

Citation of any of these data should be in the following format:

“Sierra MS, Abriata MG, Barrios E, Bravo LE, Cueva P, Fernandez L, Pineros M, Rebelo M, de Vries E, Forman D. Editors on behalf of the Cancer in Central and South America Working Group (2016). Cancer in Central and South America. Lyon: International Agency for Research on Cancer. Available from: [http://www-dep.iarc.fr/CSU\\_resources.htm](http://www-dep.iarc.fr/CSU_resources.htm) accessed [date].”

## Registry Summary Tables and Figures

# ECUADOR, CUENCA (2003-2007)

Registry Director\*: Dr Nicolas Campoverde Arevalo

Registry Staff\*: Lorena Abril Mogrovejo, María de Lourdes Pérez

\*Director and staff as notified at time of call for data in 2013. Current contact information for cancer registries in the region can be found at: [http://www.iacr.com.fr/index.php?option=com\\_comprofiler&task=usersList&listid=5](http://www.iacr.com.fr/index.php?option=com_comprofiler&task=usersList&listid=5).

**ECUADOR, CUENCA (2003-2007)**  
**Number of Cases in Major Diagnosis Groups**  
**per Calendar Year**

SITE	YEAR					TOTAL n (%)
	2003 n (%)	2004 n (%)	2005 n (%)	2006 n (%)	2007 n (%)	
<b>MALES</b>						
Lip, oral cavity, and pharynx (C00-C14)	2 (0.8)	3 (1.3)	3 (1.1)	4 (1.3)	2 (0.8)	14 (1.1)
Digestive organs (C15-C26)	61 (25.4)	55 (24.6)	72 (26.8)	75 (25.0)	70 (26.8)	333 (25.7)
Respiratory organs (C30-C39)	10 (4.2)	8 (3.6)	17 (6.3)	17 (5.7)	17 (6.5)	69 (5.3)
Bone, cartilage, and skin (C40-C44)	28 (11.7)	36 (16.1)	37 (13.8)	37 (12.3)	43 (16.5)	181 (14.0)
Breast (C50)	1 (0.4)	0 (0.0)	0 (0.0)	0 (0.0)	0 (0.0)	1 (0.1)
Male genitalia (C60-C63)	73 (30.4)	50 (22.3)	82 (30.5)	96 (32.0)	60 (23.0)	361 (27.9)
Urinary organs (C64-C68)	9 (3.8)	7 (3.1)	9 (3.3)	19 (6.3)	12 (4.6)	56 (4.3)
Eye, brain, and thyroid (C69-C75)	12 (5.0)	17 (7.6)	11 (4.1)	11 (3.7)	12 (4.6)	63 (4.9)
Hematopoietic (C81-C96)	29 (12.1)	37 (16.5)	24 (8.9)	28 (9.3)	33 (12.6)	151 (11.7)
Other and unspecified	15 (6.3)	11 (4.9)	14 (5.2)	13 (4.3)	12 (4.6)	65 (5.0)
All sites	240 (100.0)	224 (100.0)	269 (100.0)	300 (100.0)	261 (100.0)	1294 (100.0)
<b>FEMALES</b>						
Lip, oral cavity, and pharynx (C00-C14)	1 (0.3)	3 (0.9)	4 (1.0)	4 (1.0)	1 (0.3)	13 (0.7)
Digestive organs (C15-C26)	81 (23.8)	65 (20.4)	104 (26.7)	111 (27.2)	81 (20.4)	442 (23.8)
Respiratory organs (C30-C39)	6 (1.8)	1 (0.3)	10 (2.6)	6 (1.5)	16 (4.0)	39 (2.1)
Bone, cartilage, and skin (C40-C44)	60 (17.6)	54 (16.9)	49 (12.6)	66 (16.2)	60 (15.1)	289 (15.6)
Breast (C50)	40 (11.7)	42 (13.2)	52 (13.4)	64 (15.7)	69 (17.3)	267 (14.4)
Female genitalia (C51-C58)	63 (18.5)	66 (20.7)	68 (17.5)	65 (15.9)	68 (17.1)	330 (17.8)
Urinary organs (C64-C68)	7 (2.1)	6 (1.9)	12 (3.1)	7 (1.7)	7 (1.8)	39 (2.1)
Eye, brain, and thyroid (C69-C75)	27 (7.9)	23 (7.2)	31 (8.0)	31 (7.6)	48 (12.1)	160 (8.6)
Hematopoietic (C81-C96)	36 (10.6)	46 (14.4)	41 (10.5)	36 (8.8)	25 (6.3)	184 (9.9)
Other and unspecified	20 (5.9)	13 (4.1)	18 (4.6)	18 (4.4)	23 (5.8)	92 (5.0)
All sites	341 (100.0)	319 (100.0)	389 (100.0)	408 (100.0)	398 (100.0)	1855 (100.0)
<b>BOTH SEXES</b>						
Lip, oral cavity, and pharynx (C00-C14)	3 (0.5)	6 (1.1)	7 (1.1)	8 (1.1)	3 (0.5)	27 (0.9)
Digestive organs (C15-C26)	142 (24.4)	120 (22.1)	176 (26.7)	186 (26.3)	151 (22.9)	775 (24.6)
Respiratory organs (C30-C39)	16 (2.8)	9 (1.7)	27 (4.1)	23 (3.2)	33 (5.0)	108 (3.4)
Bone, cartilage, and skin (C40-C44)	88 (15.1)	90 (16.6)	86 (13.1)	103 (14.5)	103 (15.6)	470 (14.9)
Urinary organs (C64-C68)	16 (2.8)	13 (2.4)	21 (3.2)	26 (3.7)	19 (2.9)	95 (3.0)
Eye, brain, and thyroid (C69-C75)	39 (6.7)	40 (7.4)	42 (6.4)	42 (5.9)	60 (9.1)	223 (7.1)
Hematopoietic (C81-C96)	65 (11.2)	83 (15.3)	65 (9.9)	64 (9.0)	58 (8.8)	335 (10.6)
Other and unspecified	35 (6.0)	24 (4.4)	32 (4.9)	31 (4.4)	35 (5.3)	157 (5.0)
All sites	581 (100.0)	543 (100.0)	658 (100.0)	708 (100.0)	659 (100.0)	3149 (100.0)

**ECUADOR, CUENCA (2003-2007)**  
**Age Standardized Incidence Rate (World Population) per 100,000**  
**in Major Diagnosis Groups per Calendar Year**

SITE	YEAR					TOTAL ASR (%)
	2003 ASR (%)	2004 ASR (%)	2005 ASR (%)	2006 ASR (%)	2007 ASR (%)	
<b>MALES</b>						
Lip, oral cavity, and pharynx (C00-C14)	1.5 (1.1)	1.5 (1.3)	1.5 (1.1)	1.9 (1.2)	1.2 (1.0)	1.5 (1.1)
Digestive organs (C15-C26)	35.6 (26.8)	29.9 (25.6)	38.8 (28.0)	38.4 (24.7)	33.3 (26.2)	35.2 (26.2)
Respiratory organs (C30-C39)	5.0 (3.7)	3.9 (3.4)	9.2 (6.6)	8.9 (5.7)	9.1 (7.2)	7.3 (5.4)
Bone, cartilage, and skin (C40-C44)	14.1 (10.6)	19.3 (16.5)	19.8 (14.3)	20.2 (12.9)	21.8 (17.1)	19.2 (14.3)
Breast (C50)	0.4 (0.3)	0 (0.0)	0 (0.0)	0 (0.0)	0 (0.0)	0.1 (0.1)
Male genitalia (C60-C63)	39.8 (29.9)	25.1 (21.5)	39.2 (28.3)	48.5 (31.1)	27.7 (21.8)	36.1 (26.8)
Urinary organs (C64-C68)	4.6 (3.5)	3.9 (3.3)	4.4 (3.2)	11.0 (7.1)	6.4 (5.0)	6.1 (4.6)
Eye, brain, and thyroid (C69-C75)	7.2 (5.4)	8.5 (7.3)	5.9 (4.3)	6.5 (4.2)	5.3 (4.2)	6.7 (5.0)
Hematopoietic (C81-C96)	16.5 (12.4)	18.6 (15.9)	11.4 (8.3)	13.0 (8.3)	15.6 (12.3)	14.9 (11.1)
Other and unspecified	8.3 (6.2)	6.1 (5.3)	8.3 (6.0)	7.4 (4.7)	6.7 (5.3)	7.3 (5.5)
All sites	132.9 (100.0)	116.9 (100.0)	138.5 (100.0)	155.6 (100.0)	127.2 (100.0)	134.4 (100.0)
<b>FEMALES</b>						
Lip, oral cavity, and pharynx (C00-C14)	0.2 (0.2)	1.4 (1.0)	1.7 (1.0)	1.7 (1.0)	0.4 (0.3)	1.1 (0.7)
Digestive organs (C15-C26)	31.5 (21.7)	27.2 (19.5)	40.0 (25.2)	43.5 (26.5)	31.1 (19.9)	34.8 (22.7)
Respiratory organs (C30-C39)	2.7 (1.8)	0.2 (0.2)	3.8 (2.4)	2.0 (1.2)	6.4 (4.1)	3.1 (2.0)
Bone, cartilage, and skin (C40-C44)	24.4 (16.8)	22.8 (16.4)	19.3 (12.2)	25.6 (15.6)	21.1 (13.5)	22.6 (14.8)
Breast (C50)	19.9 (13.7)	19.3 (13.9)	23.6 (14.8)	27.1 (16.6)	28.0 (18.0)	23.7 (15.5)
Female genitalia (C51-C58)	28.7 (19.8)	29.9 (21.4)	28.9 (18.2)	27.9 (17.0)	26.3 (16.8)	28.3 (18.5)
Urinary organs (C64-C68)	2.1 (1.4)	2.9 (2.1)	5.4 (3.4)	2.4 (1.5)	3.3 (2.1)	3.2 (2.1)
Eye, brain, and thyroid (C69-C75)	11.5 (7.9)	10.3 (7.4)	12.9 (8.1)	12.6 (7.7)	20.0 (12.8)	13.6 (8.9)
Hematopoietic (C81-C96)	16.2 (11.2)	20.1 (14.4)	16.6 (10.5)	14.4 (8.8)	10.6 (6.8)	15.5 (10.1)
Other and unspecified	8.1 (5.5)	5.3 (3.8)	6.9 (4.3)	6.7 (4.1)	8.8 (5.7)	7.2 (4.7)
All sites	145.2 (100.0)	139.3 (100.0)	159.0 (100.0)	163.8 (100.0)	156.1 (100.0)	153.0 (100.0)
<b>BOTH SEXES</b>						
Lip, oral cavity, and pharynx (C00-C14)	0.8 (0.6)	1.4 (1.1)	1.6 (1.1)	1.8 (1.1)	0.8 (0.5)	1.3 (0.9)
Digestive organs (C15-C26)	33.3 (23.9)	28.4 (21.9)	39.6 (26.4)	41.3 (25.8)	32.0 (22.4)	35.0 (24.2)
Respiratory organs (C30-C39)	3.7 (2.6)	1.8 (1.4)	6.1 (4.1)	5.0 (3.1)	7.5 (5.3)	4.9 (3.4)
Bone, cartilage, and skin (C40-C44)	20.0 (14.3)	21.3 (16.4)	19.6 (13.1)	23.3 (14.6)	21.5 (15.0)	21.2 (14.6)
Urinary organs (C64-C68)	3.2 (2.3)	3.3 (2.6)	4.9 (3.3)	6.2 (3.9)	4.6 (3.2)	4.5 (3.1)
Eye, brain, and thyroid (C69-C75)	9.7 (7.0)	9.6 (7.4)	9.8 (6.6)	9.9 (6.2)	13.4 (9.4)	10.5 (7.3)
Hematopoietic (C81-C96)	16.2 (11.6)	19.5 (15.1)	14.3 (9.6)	13.7 (8.6)	12.9 (9.0)	15.3 (10.6)
Other and unspecified	8.2 (5.8)	5.6 (4.4)	7.4 (5.0)	7.0 (4.4)	7.9 (5.5)	7.2 (5.0)
All sites	139.5 (100.0)	129.4 (100.0)	149.7 (100.0)	159.8 (100.0)	143.1 (100.0)	144.5 (100.0)

## ECUADOR, CUENCA (2003-2007) Incidence per 100,000 by Age Group (years) Males

SITE	ALL CASES	UNK AGE	0-4	5-9	10-14	15-19	20-24	25-29	30-34	35-39	40-44	45-49	50-54	55-59	60-64	65-69	70-74	75+	CRUDE RATE	ASR (W)	CUM. RATE (0-74)†	MV (%)	DCO (%)	Rank‡	ICD10
Lip, oral cavity, and pharynx (C00-14)	14	0	.	.	.	.	.	.	.	3.3	.	2.2	5.0	3.2	.	14.2	6.2	13.6	1.3	1.5	0.17	93	7	18	C00-14
Oesophagus (C15)	12	0	.	.	.	.	.	.	.	.	.	2.2	.	9.5	3.8	9.5	.	16.9	1.1	1.3	0.12	67	0	19	C15
Stomach (C16)	188	0	.	.	.	2.3	2.8	6.5	5.6	12.9	32.2	4.3	2.5	50.7	60.0	95.0	166.5	267.8	17.5	19.4	2.17	68	12	2	C16
Colon (C18)	31	0	.	.	.	.	.	.	.	.	.	4.3	2.5	3.2	22.5	19.0	24.7	37.3	2.9	3.4	0.39	81	3		C18
Rectum (C19-20)	13	0	.	.	.	0.9	.	.	.	.	.	.	.	.	7.5	9.5	18.5	16.9	1.2	1.4	0.18	85	0		C19-20
Colorectal (C18-20)	44	0	.	.	.	0.9	2.3	.	.	.	.	4.3	2.5	3.2	30.0	28.5	43.2	54.2	4.1	4.8	0.57	82	2	7	C18-20
Anus (C21)	2	0	.	.	.	.	.	.	.	.	.	.	.	.	.	.	6.2	3.4	0.2	0.2	0.03	50	0	24	C21
Colon, rectum and anus (C18-21)	46	0	.	.	.	0.9	2.3	.	.	.	.	4.3	2.5	3.2	30.0	28.5	49.3	57.6	4.3	5.0	0.60	80	2		C18-21
Liver (C22)	29	0	0.9	.	0.8	.	.	2.8	.	.	.	.	2.5	3.2	15.0	42.7	18.5	23.7	2.7	3.3	0.43	59	10	11	C22
Gallbladder (C23-24)	18	0	.	.	.	.	.	.	1.9	2.2	2.5	8.6	2.5	6.3	3.8	4.7	18.5	27.1	1.7	1.8	0.20	67	0	17	C23-24
Pancreas (C25)	30	0	.	.	.	.	.	1.4	.	.	.	.	2.5	6.3	11.3	33.2	12.3	33.9	2.8	3.3	0.38	33	23	10	C25
Nose, sinuses (C30-31)	5	0	.	.	.	.	.	.	.	.	.	.	.	6.3	.	4.7	6.2	3.4	0.5	0.6	0.09	100	0	21	C30-31
Larynx (C32)	11	0	.	.	.	.	.	.	1.9	.	.	.	7.4	3.2	7.5	.	6.2	10.2	1.0	1.2	0.13	73	0	20	C32
Lung, trachea and bronchus (C33-34)	47	0	.	.	.	.	.	.	1.9	2.2	14.9	2.2	14.9	3.2	22.5	14.2	49.3	71.2	4.4	4.9	0.54	55	11	6	C33-34
Melanoma of skin (C43)	20	0	0.9	.	.	0.8	.	.	1.6	5.6	.	.	9.9	3.2	3.8	4.7	12.3	16.9	1.9	2.1	0.21	95	0	15	C43
Mesothelioma (C45)	1	0	.	.	.	.	.	.	1.6	.	.	.	.	.	.	.	.	.	0.1	0.1	0.01	100	0	26	C45
Kaposi sarcoma (C46)	2	0	.	.	.	.	1.1	.	.	.	.	.	.	.	.	.	6.2	.	0.2	0.2	0.04	100	0	23	C46
Breast (C50)	1	0	.	.	.	.	.	.	.	.	.	.	.	.	.	.	.	3.4	0.1	0.1	0.00	100	0	27	C50
Penis (C60)	1	0	.	.	.	.	.	.	1.6	.	.	.	.	.	.	.	.	.	0.1	0.1	0.01	100	0	26	C60
Prostate (C61)	333	0	.	.	.	.	.	.	.	1.9	4.3	37.2	69.7	120.1	190.0	326.9	569.5	31.0	33.4	3.75	84	3	1	C61	
Testis (C62)	25	0	.	.	.	2.4	2.7	9.0	8.3	1.6	.	2.2	2.5	3.2	.	4.7	.	.	2.3	2.3	0.18	80	0	13	C62
Kidney (C64)	21	0	0.9	.	.	.	.	1.1	1.6	1.9	2.2	.	9.5	11.3	14.2	6.2	20.3	2.0	2.3	0.24	76	5	12	C64	
Bladder (C67)	32	0	.	.	.	.	.	.	.	1.9	4.3	.	3.2	11.3	28.5	49.3	37.3	3.0	3.5	0.49	81	0	9	C67	
Brain, CNS (C70-72)	35	0	.	3.4	1.7	1.6	2.3	1.4	3.3	.	4.3	7.4	9.5	11.3	23.7	6.2	10.2	3.3	3.7	0.39	83	3	8	C70-72	
Thyroid (C73)	21	0	.	.	.	0.8	.	1.1	.	1.6	1.9	4.3	2.5	3.2	3.8	14.2	18.5	20.3	2.0	2.2	0.26	86	10	14	C73
Hodgkin disease (C81)	6	0	.	1.7	.	.	.	.	.	.	.	.	2.5	.	.	.	.	10.2	0.6	0.5	0.02	100	0	22	C81
Non-Hodgkin lymphoma (C82-85,C96)	64	0	.	0.8	.	.	1.8	3.4	6.9	6.5	1.9	4.3	7.4	19.0	22.5	28.5	61.7	50.8	5.9	6.8	0.82	94	3	3	C82-85,C96
Multiple myeloma (C88-C90)	18	0	.	.	.	.	.	1.4	.	1.9	2.2	2.5	9.5	3.8	9.5	6.2	23.7	1.7	1.9	0.18	100	0	16	C88-C90	
Lymphoid leukaemia (C91)	31	0	3.5	3.4	2.5	4.9	0.9	1.1	1.6	4.9	1.9	2.2	.	3.2	3.8	.	.	23.7	2.9	2.7	0.15	100	0		C91
Myeloid leukaemia (C92-94)	19	0	2.6	.	2.5	.	.	.	.	.	.	.	2.5	3.2	.	4.7	.	13.6	1.8	1.8	0.15	100	0		C92-94
Leukaemia unspecified (C95)	13	0	1.7	.	1.7	0.8	.	.	1.6	1.9	1.9	.	2.5	3.2	.	4.7	.	10.2	1.2	1.2	0.09	92	0		C95
Leukaemia (C91-95)	63	0	7.8	3.4	6.7	5.7	0.9	1.1	1.4	8.1	3.7	6.5	2.5	6.3	11.3	4.7	6.2	47.5	5.9	5.8	0.38	98	0	4	C91-95
Other and unspecified (O&U)	47	0	0.9	.	.	1.8	1.1	.	.	1.9	4.3	9.9	6.3	6.3	15.0	33.2	67.8	40.7	4.4	5.2	0.71	62	13	5	O&U
All sites but C44 (ALLbC44)	1147	0	13.9	11.0	11.7	16.2	9.9	27.1	28.9	42.3	35.5	77.5	161.2	240.9	390.3	636.3	919.0	1420.2	106.6	118.5	13.11	79	5		ALLbC44
All sites (ALL)	1294	0	13.9	11.0	11.7	17.0	9.9	28.2	30.3	43.9	41.1	90.4	195.9	291.6	457.8	707.6	1036.1	1596.5	120.3	134.4	14.93	81	5		ALL

UNK, Unknown; ASR (W), Age Standardized Rate (World Population); CUM., Cumulative; MV, Microscopic Verification; DCO, Death Certificate Only

†Percent

‡Rank based on highest ASR excluding: All sites but C44 and All sites

## ECUADOR, CUENCA (2003-2007) Incidence per 100,000 by Age Group (years) Females

SITE	ALL CASES	UNK AGE	0-4	5-9	10-14	15-19	20-24	25-29	30-34	35-39	40-44	45-49	50-54	55-59	60-64	65-69	70-74	75+	CRUDE RATE	ASR (W)	CUM. RATE (0-74)†	MV (%)	DCO (%)	Rank‡	ICD10
Lip, oral cavity, and pharynx (C00-14)	13	0	.	.	.	.	0.8	1.0	.	.	.	5.1	.	5.0	.	3.5	9.0	7.2	1.1	1.1	0.12	100	0	20	C00-14
Oesophagus (C15)	6	0	.	.	.	.	2.0	.	.	.	.	.	2.0	.	.	.	9.0	2.4	0.5	0.5	0.06	67	17	22	C15
Stomach (C16)	184	0	.	.	.	.	1.6	2.0	2.3	5.1	10.1	17.1	9.9	32.2	32.7	70.7	121.1	194.2	15.2	13.9	1.52	68	12	3	C16
Colon (C18)	59	0	.	.	.	.	0.8	.	.	3.8	2.9	6.8	4.0	19.8	11.9	14.1	31.4	57.5	4.9	4.5	0.48	78	3		C18
Rectum (C19-20)	26	0	.	.	.	.	.	.	.	.	2.9	3.4	13.9	7.4	.	10.6	13.5	14.4	2.2	2.2	0.26	77	4		C19-20
Colorectal (C18-20)	85	0	.	.	.	.	0.8	.	.	3.8	5.8	10.3	17.9	27.2	11.9	24.8	44.9	71.9	7.0	6.8	0.74	78	4	6	C18-20
Anus (C21)	2	0	.	.	.	.	.	.	.	.	.	.	.	.	.	7.1	.	.	0.2	0.2	0.04	100	0	26	C21
Colon, rectum and anus (C18-21)	87	0	.	.	.	.	0.8	.	.	3.8	5.8	10.3	17.9	27.2	11.9	31.8	44.9	71.9	7.2	7.0	0.77	78	3		C18-21
Liver (C22)	61	0	.	.	.	.	.	.	1.1	.	4.3	1.7	7.9	14.9	14.8	21.2	58.3	52.8	5.1	4.9	0.62	52	18	10	C22
Gallbladder (C23-24)	55	0	.	.	.	.	.	.	.	.	4.3	6.8	11.9	12.4	8.9	24.8	35.9	45.6	4.6	4.5	0.53	64	9	11	C23-24
Pancreas (C25)	42	0	.	.	.	.	.	.	.	1.3	.	1.7	2.0	5.0	17.8	31.8	26.9	38.4	3.5	3.5	0.43	38	10	12	C25
Nose, sinuses (C30-31)	3	0	.	.	.	.	.	.	.	.	.	.	.	.	5.9	.	4.5	.	0.2	0.3	0.05	100	0	24	C30-31
Larynx (C32)	4	0	.	.	.	.	.	.	.	.	.	.	.	5.0	.	.	4.5	2.4	0.3	0.3	0.05	75	25	23	C32
Lung, trachea and bronchus (C33-34)	29	0	.	.	.	0.8	0.8	.	.	1.3	1.4	.	4.0	.	11.9	.	26.9	31.2	2.4	2.1	0.24	52	14	15	C33-34
Melanoma of skin (C43)	30	0	.	.	.	.	0.8	.	3.4	1.3	1.4	1.7	.	2.5	11.9	7.1	38.4	2.5	2.1	0.15	83	0	16	C43	
Mesothelioma (C45)	4	0	.	.	.	.	.	.	.	1.3	.	.	.	.	.	3.5	4.8	.	0.3	0.3	0.02	100	0	25	C45
Kaposi sarcoma (C46)	1	0	.	.	.	.	.	.	.	.	.	.	.	.	.	3.5	.	.	0.1	0.1	0.02	100	0	27	C46
Breast (C50)	267	0	.	.	.	.	.	2.9	6.8	23.0	47.6	70.1	81.4	66.9	59.4	77.8	53.8	105.5	22.1	23.7	2.45	94	0	1	C50
Cervix uteri (C53)	214	0	.	.	.	.	2.5	8.8	11.3	20.4	49.0	39.3	39.7	34.7	65.3	53.1	53.8	86.3	17.7	18.5	1.89	94	0	2	C53
Corpus uteri (C54)	23	0	.	.	.	.	.	.	2.3	1.3	1.4	3.4	2.0	12.4	11.9	10.6	9.0	4.8	1.9	2.2	0.27	91	0	14	C54
Ovary (C56)	55	0	.	0.9	1.7	0.8	0.8	1.0	2.3	1.3	8.6	6.8	4.0	19.8	17.8	24.8	22.4	19.2	4.6	4.9	0.56	82	5	9	C56
Kidney (C64)	23	0	.	.	.	.	.	.	1.1	.	.	3.4	6.0	5.0	3.0	14.1	22.4	12.0	1.9	2.0	0.28	83	0	17	C64
Bladder (C67)	16	0	.	.	.	.	.	1.0	1.1	1.3	.	.	.	2.5	5.9	7.1	9.0	14.4	1.3	1.2	0.14	88	6	19	C67
Brain, CNS (C70-72)	28	0	1.8	2.6	0.8	.	3.3	1.0	2.3	5.1	4.3	1.7	.	.	3.5	13.5	7.2	2.3	2.2	0.20	57	4	13	C70-72	
Thyroid (C73)	126	0	.	.	.	1.6	0.8	4.9	14.6	25.6	25.9	27.4	21.8	24.8	14.8	21.2	53.8	16.8	10.4	10.9	1.19	95	1	4	C73
Hodgkin disease (C81)	10	0	.	.	.	0.8	0.8	1.0	1.1	.	.	1.7	.	2.5	.	.	4.5	7.2	0.8	0.7	0.06	100	0	21	C81
Non-Hodgkin lymphoma (C82-85,C96)	100	0	0.9	.	2.5	0.8	.	2.9	1.1	5.1	11.5	5.1	6.0	22.3	23.8	53.1	62.8	64.7	8.3	8.3	0.99	95	0	5	C82-85,C96
Multiple myeloma (C88-C90)	15	0	.	.	.	.	.	.	1.1	.	.	.	6.0	7.4	5.9	7.1	4.5	7.2	1.2	1.3	0.16	100	0	18	C88-C90
Lymphoid leukaemia (C91)	24	0	6.2	5.2	.	1.6	.	1.0	.	.	.	1.7	.	2.5	.	14.1	4.5	2.4	2.0	2.3	0.18	100	0		C91
Myeloid leukaemia (C92-94)	26	0	1.8	.	.	1.6	1.6	.	3.4	2.6	1.4	1.7	2.0	5.0	5.9	7.1	9.0	9.6	2.2	2.2	0.22	100	0		C92-94
Leukaemia unspecified (C95)	9	0	0.9	0.9	.	.	.	1.0	.	.	.	3.4	.	.	3.0	.	.	7.2	0.7	0.7	0.05	44	11		C95
Leukaemia (C91-95)	59	0	8.9	6.1	.	3.2	1.6	2.0	3.4	2.6	1.4	6.8	2.0	7.4	8.9	21.2	13.5	19.2	4.9	5.1	0.44	92	2	7	C91-95
Other and unspecified (O&U)	65	0	.	.	.	0.8	.	1.0	3.4	1.3	1.4	6.8	4.0	19.8	14.8	28.3	17.9	64.7	5.4	5.0	0.50	43	14	8	O&U
All sites but C44 (ALLbC44)	1601	0	13.3	9.6	5.9	10.4	16.4	36.2	63.1	108.6	187.4	217.1	236.3	334.3	356.3	558.9	713.4	980.7	132.6	132.9	14.34	81	5		ALLbC44
All sites (ALL)	1855	0	13.3	9.6	5.9	10.4	16.4	38.1	65.3	116.3	203.2	237.6	264.2	398.6	424.6	658.0	848.0	1220.5	153.6	153.0	16.55	83	4		ALL

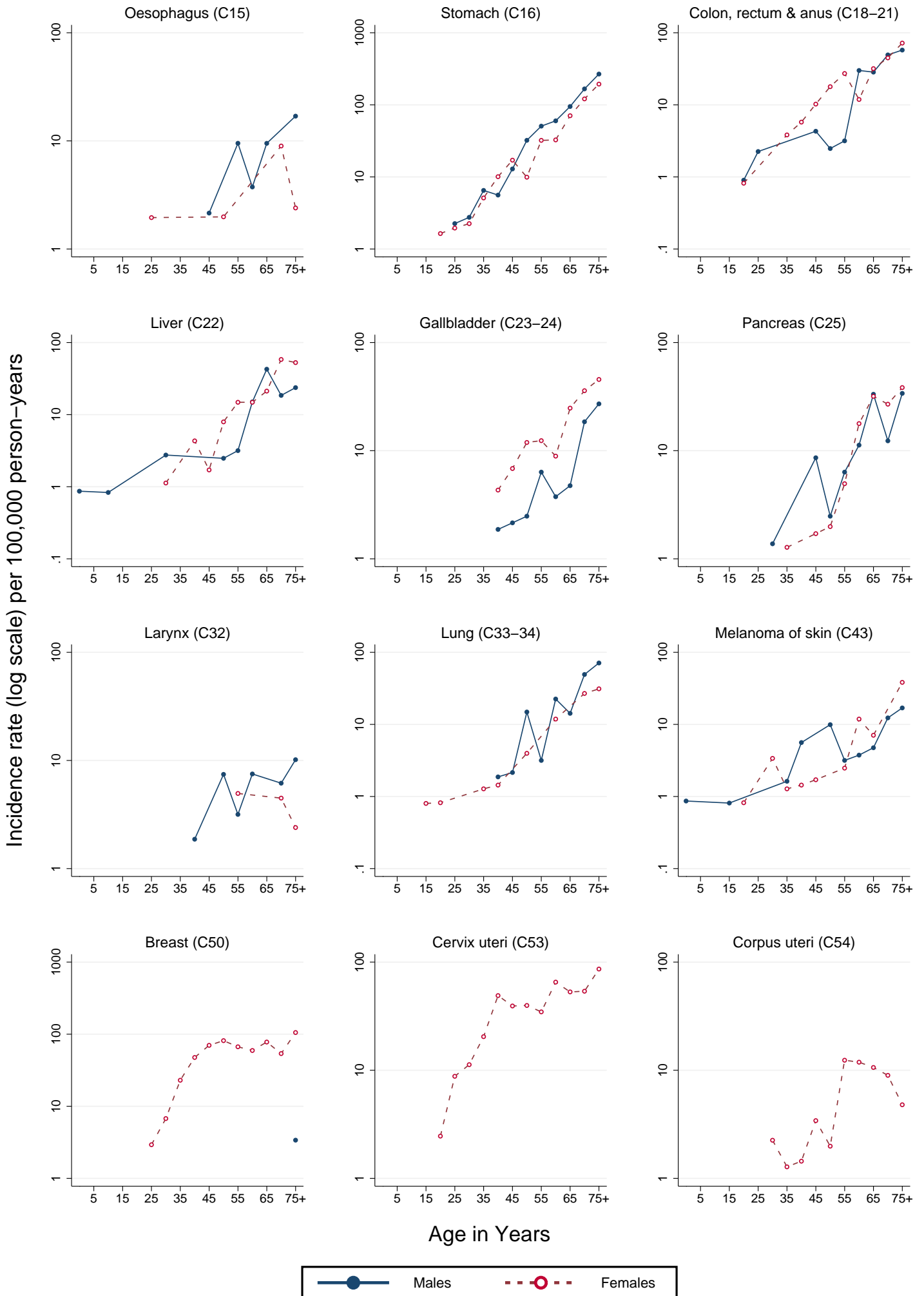
UNK, Unknown; ASR (W), Age Standardized Rate (World Population); CUM., Cumulative; MV, Microscopic Verification; DCO, Death Certificate Only

†Percent

‡Rank based on highest ASR excluding: All sites but C44 and All sites

# ECUADOR, CUENCA (2003–2007)

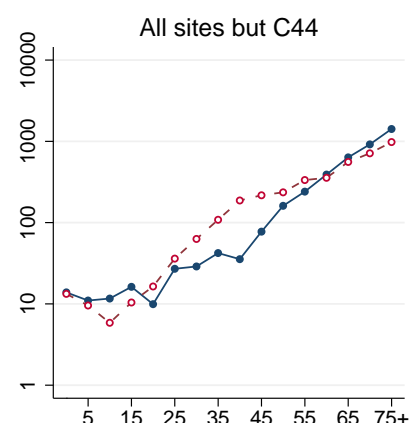
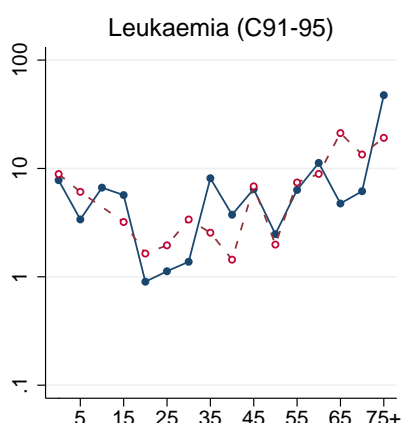
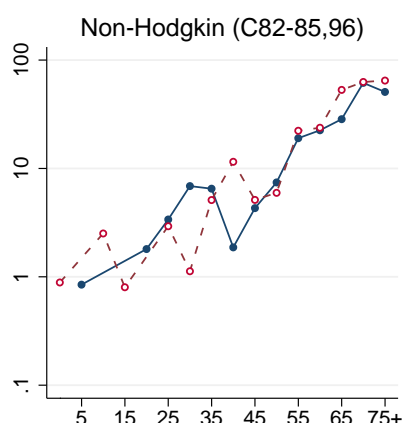
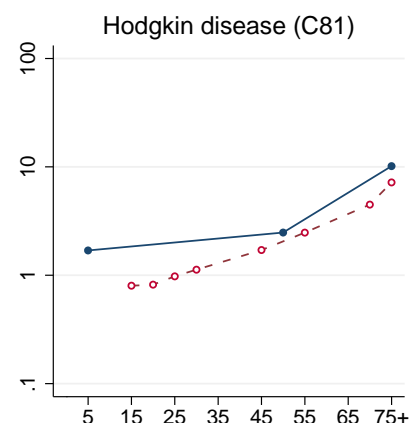
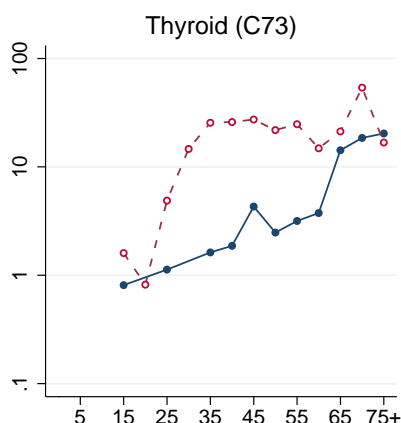
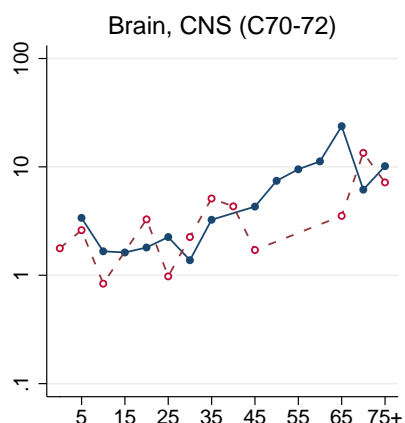
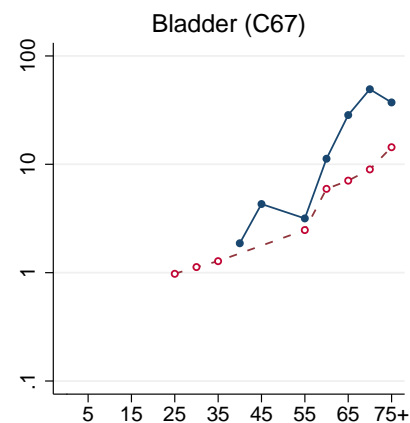
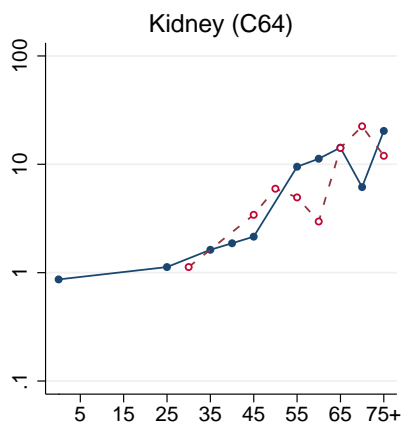
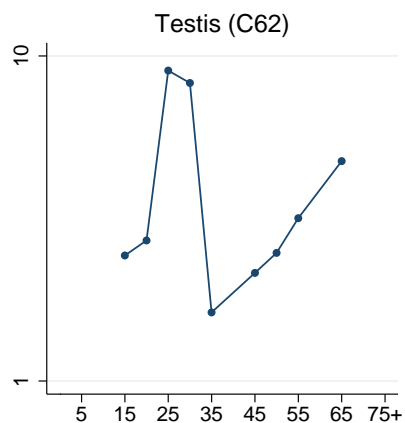
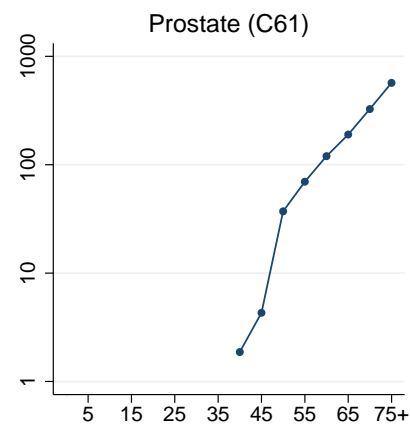
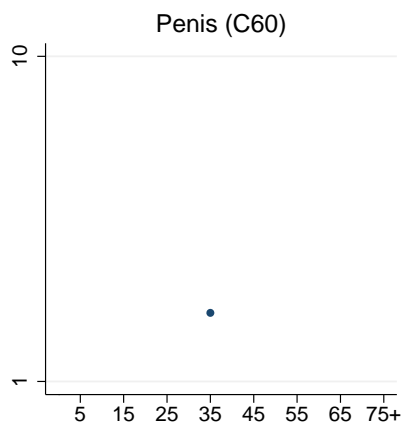
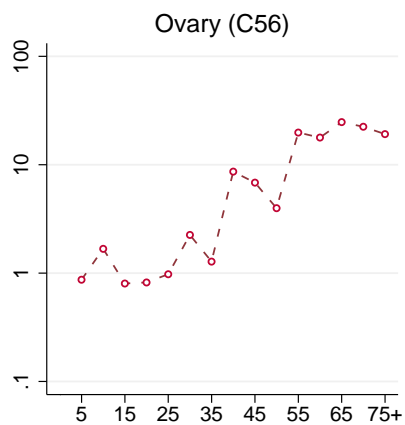
Age-specific incidence rates per 100,000 person-years



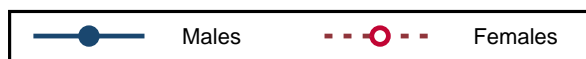
# ECUADOR, CUENCA (2003-2007)

Age-specific incidence rates per 100,000 person-years

Incidence Rate (log scale) per 100,000 person-years



Age in Years



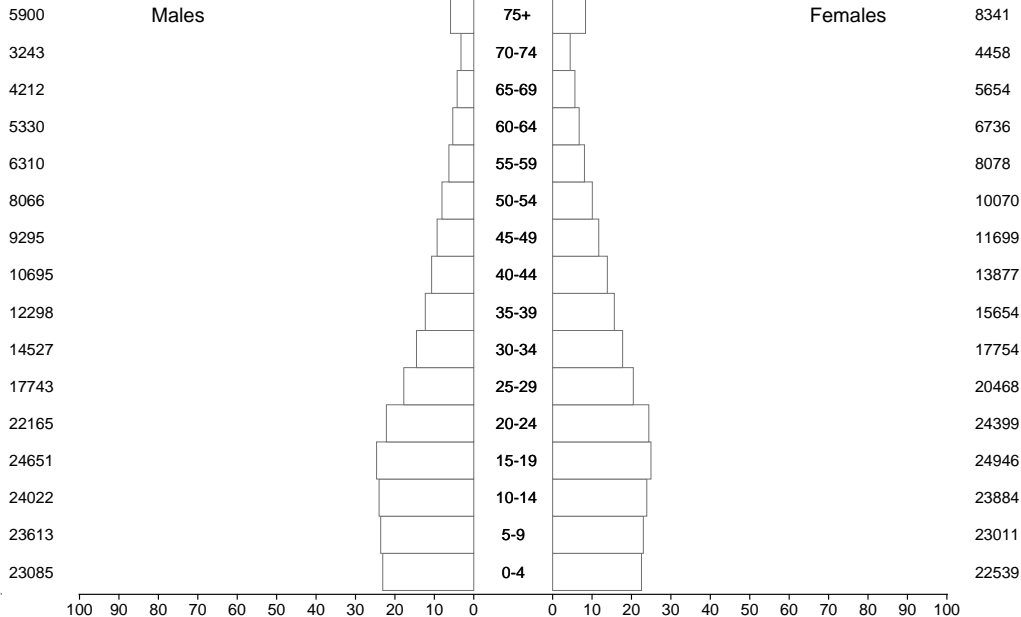


# ECUADOR, CUENCA (2003-2007)

Average annual person-years

Males

Females



Population in Thousands

## Registry Summary Tables and Figures

# ECUADOR, QUITO (2003-2007)

Registry Director\*: Dr Patricia Cueva Ayala

Registry Staff\*: José Yépez Maldonado, María Belén Morejón, Mónica Galarza, Doris Chauca, Paulina Bedón

\*Director and staff as notified at time of call for data in 2013. Current contact information for cancer registries in the region can be found at: [http://www.iacr.com.fr/index.php?option=com\\_comprofiler&task=usersList&listid=5](http://www.iacr.com.fr/index.php?option=com_comprofiler&task=usersList&listid=5).

**ECUADOR, QUITO (2003-2007)**  
**Number of Cases in Major Diagnosis Groups**  
**per Calendar Year**

SITE	YEAR					TOTAL n (%)
	2003 n (%)	2004 n (%)	2005 n (%)	2006 n (%)	2007 n (%)	
<b>MALES</b>						
Lip, oral cavity, and pharynx (C00-C14)	9 (0.8)	13 (1.1)	11 (0.8)	11 (0.8)	12 (0.8)	56 (0.8)
Digestive organs (C15-C26)	273 (22.9)	261 (21.9)	337 (23.8)	302 (21.5)	336 (23.2)	1509 (22.7)
Respiratory organs (C30-C39)	54 (4.5)	51 (4.3)	77 (5.4)	51 (3.6)	72 (5.0)	305 (4.6)
Bone, cartilage, and skin (C40-C44)	218 (18.3)	242 (20.3)	291 (20.5)	310 (22.1)	288 (19.9)	1349 (20.3)
Breast (C50)	2 (0.2)	3 (0.3)	1 (0.1)	4 (0.3)	6 (0.4)	16 (0.2)
Male genitalia (C60-C63)	334 (28.0)	313 (26.3)	335 (23.6)	385 (27.5)	409 (28.2)	1776 (26.7)
Urinary organs (C64-C68)	46 (3.9)	57 (4.8)	67 (4.7)	59 (4.2)	50 (3.4)	279 (4.2)
Eye, brain, and thyroid (C69-C75)	62 (5.2)	42 (3.5)	74 (5.2)	66 (4.7)	61 (4.2)	305 (4.6)
Hematopoietic (C81-C96)	128 (10.7)	152 (12.8)	157 (11.1)	143 (10.2)	154 (10.6)	734 (11.0)
Other and unspecified	66 (5.5)	56 (4.7)	68 (4.8)	71 (5.1)	62 (4.3)	323 (4.9)
All sites	1192 (100.0)	1190 (100.0)	1418 (100.0)	1402 (100.0)	1450 (100.0)	6652 (100.0)
<b>FEMALES</b>						
Lip, oral cavity, and pharynx (C00-C14)	10 (0.7)	31 (2.1)	13 (0.7)	14 (0.8)	13 (0.7)	81 (1.0)
Digestive organs (C15-C26)	273 (19.9)	299 (20.3)	348 (19.3)	348 (20.9)	347 (19.9)	1615 (20.0)
Respiratory organs (C30-C39)	47 (3.4)	44 (3.0)	43 (2.4)	57 (3.4)	55 (3.2)	246 (3.1)
Bone, cartilage, and skin (C40-C44)	254 (18.5)	253 (17.2)	359 (19.9)	318 (19.1)	302 (17.3)	1486 (18.4)
Breast (C50)	223 (16.2)	229 (15.6)	288 (16.0)	280 (16.8)	289 (16.6)	1309 (16.2)
Female genitalia (C51-C58)	234 (17.0)	238 (16.2)	303 (16.8)	223 (13.4)	268 (15.4)	1266 (15.7)
Urinary organs (C64-C68)	24 (1.7)	43 (2.9)	34 (1.9)	40 (2.4)	41 (2.4)	182 (2.3)
Eye, brain, and thyroid (C69-C75)	111 (8.1)	145 (9.9)	179 (9.9)	188 (11.3)	216 (12.4)	839 (10.4)
Hematopoietic (C81-C96)	132 (9.6)	138 (9.4)	148 (8.2)	133 (8.0)	130 (7.5)	681 (8.5)
Other and unspecified	67 (4.9)	50 (3.4)	88 (4.9)	67 (4.0)	82 (4.7)	354 (4.4)
All sites	1375 (100.0)	1470 (100.0)	1803 (100.0)	1668 (100.0)	1743 (100.0)	8059 (100.0)
<b>BOTH SEXES</b>						
Lip, oral cavity, and pharynx (C00-C14)	19 (0.7)	44 (1.7)	24 (0.7)	25 (0.8)	25 (0.8)	137 (0.9)
Digestive organs (C15-C26)	546 (21.3)	560 (21.1)	685 (21.3)	650 (21.2)	683 (21.4)	3124 (21.2)
Respiratory organs (C30-C39)	101 (3.9)	95 (3.6)	120 (3.7)	108 (3.5)	127 (4.0)	551 (3.7)
Bone, cartilage, and skin (C40-C44)	472 (18.4)	495 (18.6)	650 (20.2)	628 (20.5)	590 (18.5)	2835 (19.3)
Urinary organs (C64-C68)	70 (2.7)	100 (3.8)	101 (3.1)	99 (3.2)	91 (2.8)	461 (3.1)
Eye, brain, and thyroid (C69-C75)	173 (6.7)	187 (7.0)	253 (7.9)	254 (8.3)	277 (8.7)	1144 (7.8)
Hematopoietic (C81-C96)	260 (10.1)	290 (10.9)	305 (9.5)	276 (9.0)	284 (8.9)	1415 (9.6)
Other and unspecified	133 (5.2)	106 (4.0)	156 (4.8)	138 (4.5)	144 (4.5)	677 (4.6)
All sites	2567 (100.0)	2660 (100.0)	3221 (100.0)	3070 (100.0)	3193 (100.0)	14711 (100.0)

**ECUADOR, QUITO (2003-2007)**  
**Age Standardized Incidence Rate (World Population) per 100,000**  
**in Major Diagnosis Groups per Calendar Year**

SITE	YEAR					TOTAL ASR (%)
	2003 ASR (%)	2004 ASR (%)	2005 ASR (%)	2006 ASR (%)	2007 ASR (%)	
<b>MALES</b>						
Lip, oral cavity, and pharynx (C00-C14)	1.5 (0.8)	2.1 (1.0)	2.1 (0.9)	1.6 (0.7)	2.0 (0.8)	1.8 (0.8)
Digestive organs (C15-C26)	45.0 (22.8)	44.5 (21.9)	56.7 (24.0)	50.5 (21.9)	58.3 (23.5)	50.7 (22.8)
Respiratory organs (C30-C39)	9.3 (4.7)	8.9 (4.4)	13.5 (5.7)	8.6 (3.7)	12.4 (5.0)	10.5 (4.7)
Bone, cartilage, and skin (C40-C44)	37.8 (19.2)	41.3 (20.3)	49.3 (20.8)	51.3 (22.2)	49.9 (20.1)	45.7 (20.6)
Breast (C50)	0.3 (0.2)	0.6 (0.3)	0.2 (0.1)	0.8 (0.3)	0.9 (0.4)	0.6 (0.3)
Male genitalia (C60-C63)	55.2 (27.9)	54.7 (26.9)	56.6 (23.9)	63.4 (27.5)	72.1 (29.1)	60.1 (27.0)
Urinary organs (C64-C68)	8.1 (4.1)	10.4 (5.1)	10.9 (4.6)	10.6 (4.6)	8.8 (3.5)	9.7 (4.4)
Eye, brain, and thyroid (C69-C75)	9.8 (5.0)	6.6 (3.2)	11.6 (4.9)	10.1 (4.4)	9.2 (3.7)	9.5 (4.3)
Hematopoietic (C81-C96)	19.9 (10.1)	24.3 (12.0)	25.2 (10.6)	23.1 (10.0)	24.1 (9.7)	23.2 (10.5)
Other and unspecified	10.5 (5.3)	9.7 (4.8)	10.5 (4.4)	10.8 (4.7)	10.5 (4.2)	10.4 (4.7)
All sites	197.6 (100.0)	202.9 (100.0)	236.4 (100.0)	230.6 (100.0)	248.1 (100.0)	222.1 (100.0)
<b>FEMALES</b>						
Lip, oral cavity, and pharynx (C00-C14)	1.4 (0.7)	4.2 (2.0)	1.7 (0.7)	1.9 (0.8)	1.7 (0.7)	2.1 (1.0)
Digestive organs (C15-C26)	34.5 (18.4)	39.8 (19.2)	47.6 (19.2)	46.3 (20.2)	48.9 (20.3)	43.3 (19.5)
Respiratory organs (C30-C39)	6.7 (3.6)	5.9 (2.9)	6.0 (2.4)	7.9 (3.5)	8.1 (3.4)	6.9 (3.1)
Bone, cartilage, and skin (C40-C44)	33.6 (17.9)	33.9 (16.4)	48.2 (19.4)	41.8 (18.3)	40.9 (17.0)	39.4 (17.8)
Breast (C50)	32.6 (17.4)	34.2 (16.5)	42.4 (17.1)	39.9 (17.4)	40.9 (17.0)	38.0 (17.1)
Female genitalia (C51-C58)	32.4 (17.3)	34.6 (16.7)	41.7 (16.8)	31.8 (13.9)	37.3 (15.5)	35.5 (16.0)
Urinary organs (C64-C68)	3.2 (1.7)	6.7 (3.2)	4.8 (1.9)	6.3 (2.8)	5.7 (2.4)	5.3 (2.4)
Eye, brain, and thyroid (C69-C75)	15.0 (8.0)	20.3 (9.8)	23.8 (9.6)	25.0 (10.9)	28.8 (11.9)	22.7 (10.2)
Hematopoietic (C81-C96)	18.9 (10.1)	20.1 (9.7)	19.9 (8.0)	18.5 (8.1)	17.6 (7.3)	18.9 (8.5)
Other and unspecified	9.0 (4.8)	7.4 (3.6)	12.1 (4.9)	9.3 (4.1)	11.4 (4.7)	9.7 (4.4)
All sites	187.3 (100.0)	207.1 (100.0)	248.3 (100.0)	228.8 (100.0)	241.5 (100.0)	221.9 (100.0)
<b>BOTH SEXES</b>						
Lip, oral cavity, and pharynx (C00-C14)	1.4 (0.7)	3.2 (1.6)	1.8 (0.8)	1.7 (0.8)	1.8 (0.7)	2.0 (0.9)
Digestive organs (C15-C26)	39.2 (20.6)	41.8 (20.5)	51.6 (21.4)	48.1 (21.1)	53.0 (21.8)	46.5 (21.1)
Respiratory organs (C30-C39)	7.8 (4.1)	7.3 (3.6)	9.4 (3.9)	8.2 (3.6)	10.0 (4.1)	8.5 (3.8)
Bone, cartilage, and skin (C40-C44)	35.6 (18.6)	37.4 (18.3)	48.7 (20.2)	46.1 (20.2)	45.0 (18.5)	42.3 (19.2)
Urinary organs (C64-C68)	5.4 (2.8)	8.3 (4.1)	7.5 (3.1)	8.2 (3.6)	7.0 (2.9)	7.3 (3.3)
Eye, brain, and thyroid (C69-C75)	12.5 (6.6)	13.9 (6.8)	18.1 (7.5)	18.1 (7.9)	19.6 (8.1)	16.5 (7.5)
Hematopoietic (C81-C96)	19.3 (10.1)	21.9 (10.8)	22.4 (9.3)	20.6 (9.0)	20.6 (8.5)	20.9 (9.5)
Other and unspecified	9.7 (5.1)	8.5 (4.1)	11.3 (4.7)	10.0 (4.4)	11.1 (4.6)	10.1 (4.6)
All sites	190.8 (100.0)	204.0 (100.0)	241.8 (100.0)	228.4 (100.0)	243.0 (100.0)	220.8 (100.0)

## ECUADOR, QUITO (2003-2007) Incidence per 100,000 by Age Group (years) Males

SITE	ALL CASES	UNK AGE	0-4	5-9	10-14	15-19	20-24	25-29	30-34	35-39	40-44	45-49	50-54	55-59	60-64	65-69	70-74	75+	CRUDE RATE	ASR (W)	CUM. RATE (0-74)†	MV (%)	DCO (%)	Rank‡	ICD10
Lip, oral cavity, and pharynx (C00-14)	56	0	.	.	.	0.3	0.3	.	.	0.8	0.4	0.6	4.0	7.5	6.2	9.5	7.5	25.6	1.5	1.8	0.18	96	2	19	C00-14
Oesophagus (C15)	71	2	.	.	.	.	.	0.3	3.7	0.4	0.4	1.7	1.3	5.6	3.7	7.9	18.8	45.2	1.9	2.2	0.21	85	13	18	C15
Stomach (C16)	712	8	.	.	.	0.3	0.3	1.2	3.1	5.1	12.9	20.7	34.2	55.1	86.1	120.1	167.0	324.8	19.4	23.7	2.56	82	13	2	C16
Colon (C18)	223	1	.	.	.	0.5	0.8	1.2	1.4	1.6	7.1	6.2	9.4	21.5	19.7	34.8	54.4	90.4	6.1	7.3	0.80	87	9		C18
Rectum (C19-20)	112	1	.	.	.	.	.	0.6	0.3	2.0	2.2	3.9	4.7	12.1	19.7	26.9	16.9	35.4	3.1	4.0	0.45	92	4		C19-20
Colorectal (C18-20)	335	2	.	.	.	0.5	0.8	1.8	1.7	3.5	9.4	10.1	14.1	33.6	39.4	61.6	71.3	125.8	9.1	11.2	1.25	88	7	4	C18-20
Anus (C21)	5	0	.	.	.	.	.	.	.	.	.	.	0.7	.	.	1.6	1.9	2.4	0.1	0.2	0.02	100	0	27	C21
Colon, rectum and anus (C18-21)	340	2	.	.	.	0.5	0.8	1.8	1.7	3.5	9.4	10.1	14.8	33.6	39.4	63.2	73.2	128.2	9.3	11.4	1.27	89	7		C18-21
Liver (C22)	140	0	1.1	0.5	0.6	0.3	.	.	0.3	0.8	0.4	2.2	6.7	9.3	18.5	33.2	35.7	58.6	3.8	4.8	0.55	51	27	10	C22
Gallbladder (C23-24)	129	1	.	.	.	.	.	0.3	0.3	.	1.3	4.5	8.1	9.3	25.8	31.6	20.6	50.1	3.5	4.6	0.51	53	23	11	C23-24
Pancreas (C25)	90	0	.	.	.	.	.	0.3	.	1.2	0.4	2.8	4.7	5.6	9.8	20.5	28.1	37.9	2.5	3.1	0.37	31	33	16	C25
Nose, sinuses (C30-31)	15	0	.	.	.	0.3	.	0.6	.	.	0.9	2.2	.	0.9	1.2	1.6	3.8	1.2	0.4	0.5	0.06	87	0	25	C30-31
Larynx (C32)	35	0	.	.	.	.	.	.	.	.	.	1.1	3.4	.	7.4	4.7	11.3	15.9	1.0	1.2	0.14	91	6	21	C32
Lung, trachea and bronchus (C33-34)	241	0	.	.	.	0.3	0.3	1.2	0.3	3.5	2.2	3.9	10.7	20.5	30.8	53.7	78.8	91.6	6.6	8.3	1.03	72	15	5	C33-34
Melanoma of skin (C43)	105	3	0.3	.	.	.	.	0.9	1.0	.	2.7	3.9	5.4	5.6	12.3	17.4	33.8	35.4	2.9	3.6	0.43	99	1	15	C43
Mesothelioma (C45)	9	0	.	.	.	.	.	0.3	.	.	.	0.6	0.7	0.9	.	1.6	3.8	2.4	0.2	0.3	0.04	100	0	26	C45
Kaposi sarcoma (C46)	29	0	.	.	.	0.3	0.5	0.9	0.7	2.4	1.3	0.6	1.3	1.9	1.2	1.6	.	6.1	0.8	0.8	0.06	97	3	22	C46
Breast (C50)	16	0	.	.	.	.	.	.	.	0.4	0.4	1.7	1.3	1.9	2.5	1.6	3.8	2.4	0.4	0.6	0.07	88	0	24	C50
Penis (C60)	18	0	.	.	.	.	.	.	.	0.8	.	0.6	1.3	2.8	1.2	3.2	1.9	7.3	0.5	0.6	0.06	83	0	23	C60
Prostate (C61)	1550	13	.	.	.	.	.	.	.	0.4	0.9	5.0	30.9	105.4	223.9	380.9	602.3	759.6	42.3	54.2	6.81	89	8	1	C61
Testis (C62)	199	3	0.3	0.3	0.3	5.4	8.5	18.4	9.3	7.1	6.7	5.6	.	2.8	4.9	3.2	.	1.2	5.4	4.9	0.37	97	0	9	C62
Kidney (C64)	119	2	1.4	0.8	.	0.3	.	0.9	0.7	0.4	1.8	3.9	6.0	17.7	17.2	28.5	18.8	25.6	3.2	4.3	0.50	78	13	13	C64
Bladder (C67)	158	1	.	.	.	.	.	0.3	0.7	2.0	0.9	1.7	3.4	11.2	24.6	31.6	46.9	75.7	4.3	5.4	0.62	93	4	8	C67
Brain, CNS (C70-72)	141	0	1.9	1.6	1.9	1.9	1.5	2.8	3.5	3.5	6.2	6.2	6.7	10.3	12.3	6.3	18.8	12.2	3.8	4.3	0.43	89	4	12	C70-72
Thyroid (C73)	122	1	.	.	.	0.8	0.8	3.4	3.5	3.1	4.9	7.8	12.7	7.5	11.1	12.6	13.1	12.2	3.3	3.9	0.41	93	3	14	C73
Hodgkin disease (C81)	49	0	0.3	0.8	0.6	0.5	0.8	0.9	0.7	2.4	2.2	1.7	3.4	5.6	3.7	1.6	3.8	2.4	1.3	1.5	0.14	100	0	20	C81
Non-Hodgkin lymphoma (C82-85,C96)	358	4	1.6	1.4	2.8	2.2	3.1	1.8	8.6	6.7	7.1	15.7	19.5	28.0	40.6	56.9	65.7	70.8	9.8	11.7	1.32	99	1	3	C82-85,C96
Multiple myeloma (C88-C90)	88	0	.	.	.	.	.	.	0.3	1.2	2.7	2.8	7.4	12.1	11.1	15.8	11.3	29.3	2.4	3.0	0.32	95	1	17	C88-C90
Lymphoid leukaemia (C91)	131	0	6.5	3.8	3.3	5.6	3.3	1.2	1.4	1.6	1.8	1.1	0.7	3.7	4.9	6.3	7.5	14.7	3.6	3.7	0.26	99	1		C91
Myeloid leukaemia (C92-94)	86	0	0.8	0.3	0.8	1.3	1.5	1.2	1.4	1.2	1.3	5.6	5.4	3.7	4.9	11.1	3.8	23.2	2.3	2.6	0.22	100	0		C92-94
Leukaemia unspecified (C95)	22	0	0.5	0.5	.	.	0.5	0.3	0.7	.	0.4	.	0.7	0.9	4.9	.	5.6	3.7	0.6	0.7	0.08	73	27		C95
Leukaemia (C91-95)	239	0	7.9	4.6	4.1	7.0	5.4	2.8	3.5	2.8	3.6	6.7	6.7	8.4	14.8	17.4	16.9	41.5	6.5	7.0	0.56	97	3	6	C91-95
Other and unspecified (O&U)	162	0	0.3	.	.	0.3	0.8	0.6	2.4	1.2	2.7	2.8	6.7	13.1	25.8	31.6	48.8	52.5	4.4	5.6	0.69	75	15	7	O&U
All sites but C44 (ALLbC44)	5452	41	18.5	12.4	14.9	23.9	27.8	43.6	43.9	53.1	79.7	128.3	215.4	390.0	653.3	984.8	1379.1	1961.2	148.7	181.2	20.50	86	8		ALLbC44
All sites (ALL)	6652	83	18.5	12.7	15.7	25.0	30.3	47.9	50.8	58.6	101.1	154.6	273.7	502.0	799.7	1207.7	1705.6	2395.9	181.4	222.1	25.34	89	7		ALL

UNK, Unknown; ASR (W), Age Standardized Rate (World Population); CUM., Cumulative; MV, Microscopic Verification; DCO, Death Certificate Only

†Percent

‡Rank based on highest ASR excluding: All sites but C44 and All sites

## ECUADOR, QUITO (2003-2007) Incidence per 100,000 by Age Group (years) Females

SITE	ALL CASES	UNK AGE	0-4	5-9	10-14	15-19	20-24	25-29	30-34	35-39	40-44	45-49	50-54	55-59	60-64	65-69	70-74	75+	CRUDE RATE	ASR (W)	CUM. RATE (0-74)†	MV (%)	DCO (%)	Rank‡	ICD10
Lip, oral cavity, and pharynx (C00-14)	81	0	.	.	0.3	0.3	0.2	1.1	1.3	0.7	2.0	1.5	4.8	7.4	6.2	3.8	17.3	20.1	2.1	2.1	0.23	94	5	19	C00-14
Oesophagus (C15)	23	1	.	.	.	.	.	.	.	.	0.4	.	0.6	2.5	2.1	7.5	3.2	6.1	0.6	0.7	0.08	83	9	22	C15
Stomach (C16)	580	5	.	.	.	0.5	0.2	1.4	6.0	7.6	13.5	10.4	19.2	28.9	35.3	82.6	124.5	196.3	14.7	15.0	1.67	74	21	4	C16
Colon (C18)	286	1	.	.	.	0.5	0.5	1.1	2.9	3.5	2.8	5.5	14.4	24.0	26.0	47.6	45.7	82.9	7.3	7.8	0.87	81	13		C18
Rectum (C19-20)	111	0	.	.	.	0.3	.	0.6	1.0	3.1	4.0	3.5	6.6	4.1	9.3	8.8	15.8	32.3	2.8	2.9	0.28	86	5		C19-20
Colorectal (C18-20)	397	1	.	.	.	0.8	0.5	1.7	3.8	6.6	6.8	8.9	21.0	28.1	35.3	56.3	61.5	115.2	10.1	10.6	1.16	83	11	5	C18-20
Anus (C21)	25	0	.	.	.	.	.	.	.	.	0.4	0.5	2.4	0.8	2.1	5.0	4.7	7.9	0.6	0.7	0.08	96	4	21	C21
Colon, rectum and anus (C18-21)	422	1	.	.	.	0.8	0.5	1.7	3.8	6.6	7.1	9.4	23.4	28.9	37.4	61.3	66.2	123.0	10.7	11.3	1.24	84	10		C18-21
Liver (C22)	142	1	0.8	.	.	.	0.7	0.3	.	0.7	2.4	3.5	5.4	1.7	12.5	20.0	31.5	52.3	3.6	3.7	0.40	44	41	15	C22
Gallbladder (C23-24)	266	2	.	.	.	.	.	0.3	.	1.4	4.0	6.9	11.4	24.0	31.2	51.3	56.7	69.8	6.8	7.7	0.94	58	15	8	C23-24
Pancreas (C25)	137	0	.	.	.	.	.	0.3	.	0.7	2.0	3.0	3.6	12.4	10.4	25.0	28.4	47.1	3.5	3.7	0.43	38	32	16	C25
Nose, sinuses (C30-31)	18	0	.	.	.	.	0.2	.	0.3	.	0.8	2.0	1.2	.	1.0	.	1.6	5.2	0.5	0.4	0.04	100	0	24	C30-31
Larynx (C32)	8	0	.	.	.	.	.	.	.	0.3	0.4	1.0	.	0.8	1.0	.	1.6	0.9	0.2	0.2	0.03	75	13	25	C32
Lung, trachea and bronchus (C33-34)	217	2	.	.	.	.	0.2	0.3	1.6	1.4	2.4	8.4	10.2	19.8	27.0	36.3	33.1	55.8	5.5	6.2	0.71	73	18	11	C33-34
Melanoma of skin (C43)	138	5	.	.	.	.	.	1.1	1.9	1.0	1.2	4.5	8.4	13.2	14.5	17.5	22.1	31.4	3.5	3.9	0.44	99	0	13	C43
Mesothelioma (C45)	4	0	.	.	.	.	.	0.3	.	.	.	0.5	.	1.7	.	.	.	.	0.1	0.1	0.01	100	0	26	C45
Kaposi sarcoma (C46)	2	0	.	.	.	.	.	.	.	.	.	.	.	.	1.0	.	.	.	0.1	0.1	0.01	100	0	27	C46
Breast (C50)	1309	9	.	.	.	0.5	0.7	2.8	11.8	27.3	62.7	83.7	103.8	135.6	145.4	134.0	145.0	144.8	33.3	38.0	4.30	94	3	1	C50
Cervix uteri (C53)	728	3	.	.	.	.	2.4	7.6	14.9	24.9	34.9	42.1	48.0	54.6	71.7	57.6	86.7	69.8	18.5	20.2	2.24	97	2	2	C53
Corpus uteri (C54)	164	3	.	.	.	.	.	0.3	0.3	2.4	2.4	7.4	17.4	10.7	26.0	28.8	23.6	22.7	4.2	5.0	0.61	93	2	12	C54
Ovary (C56)	280	2	0.3	1.1	0.6	1.5	1.4	3.1	4.1	4.5	9.9	17.8	15.6	32.2	22.9	23.8	29.9	31.4	7.1	7.9	0.85	88	5	7	C56
Kidney (C64)	98	0	0.6	0.3	0.3	.	.	0.8	0.6	0.7	2.0	3.0	8.4	9.9	13.5	16.3	17.3	11.3	2.5	3.0	0.37	84	6	17	C64
Bladder (C67)	80	1	.	.	.	.	0.2	0.6	1.6	0.3	1.2	1.0	5.4	6.6	15.6	1.3	15.8	19.2	2.0	2.2	0.25	89	10	18	C67
Brain, CNS (C70-72)	142	2	2.3	3.3	1.7	0.5	1.9	1.1	3.2	4.5	4.8	5.0	3.6	9.1	12.5	10.0	6.3	12.2	3.6	3.9	0.35	88	6	14	C70-72
Thyroid (C73)	654	9	.	.	1.1	1.5	7.5	10.4	18.8	23.8	30.6	45.6	40.8	48.0	46.7	38.8	41.0	36.6	16.6	17.6	1.80	97	2	3	C73
Hodgkin disease (C81)	19	1	.	.	0.3	0.5	.	0.6	0.6	1.4	.	1.0	.	.	2.1	.	.	2.6	0.5	0.5	0.03	100	0	23	C81
Non-Hodgkin lymphoma (C82-85,C96)	341	3	1.4	1.4	1.1	2.3	2.7	2.5	2.5	4.5	6.0	15.4	17.4	23.2	32.2	43.8	47.3	65.4	8.7	9.5	1.03	99	1	6	C82-85,C96
Multiple myeloma (C88-C90)	57	0	.	.	.	.	.	.	0.3	.	.	1.5	4.2	5.8	8.3	16.3	14.2	7.9	1.4	1.8	0.25	98	0	20	C88-C90
Lymphoid leukaemia (C91)	148	1	7.9	5.6	3.6	2.0	1.2	0.8	1.9	1.7	3.2	4.5	3.6	3.3	6.2	8.8	11.0	10.5	3.8	4.1	0.33	99	1		C91
Myeloid leukaemia (C92-94)	99	0	1.4	0.3	1.4	1.0	0.7	1.4	1.9	2.4	2.4	3.5	3.6	5.0	4.2	10.0	11.0	16.6	2.5	2.6	0.25	100	0		C92-94
Leukaemia unspecified (C95)	17	0	.	.	0.3	.	0.2	0.3	0.3	.	0.8	1.0	.	2.5	.	.	4.7	2.6	0.4	0.4	0.05	76	18		C95
Leukaemia (C91-95)	264	1	9.3	5.8	5.3	3.1	2.2	2.5	4.1	4.1	6.4	8.9	7.2	10.7	10.4	18.8	26.8	29.7	6.7	7.2	0.63	98	2	9	C91-95
Other and unspecified (O&U)	244	4	0.3	.	0.3	0.5	0.5	0.6	2.2	1.7	4.4	7.9	13.2	11.6	23.9	31.3	56.7	63.7	6.2	6.7	0.79	77	16	10	O&U
All sites but C44 (ALLbC44)	6756	57	18.1	12.8	12.8	15.1	25.5	42.4	83.6	127.5	207.3	304.2	391.1	517.6	637.7	761.2	934.5	1191.7	171.7	187.5	20.63	87	8		ALLbC44
All sites (ALL)	8059	96	18.1	13.0	12.8	16.3	26.8	46.4	90.3	135.1	233.9	336.9	439.1	580.5	759.3	942.7	1150.4	1634.8	204.8	221.9	24.30	89	7		ALL

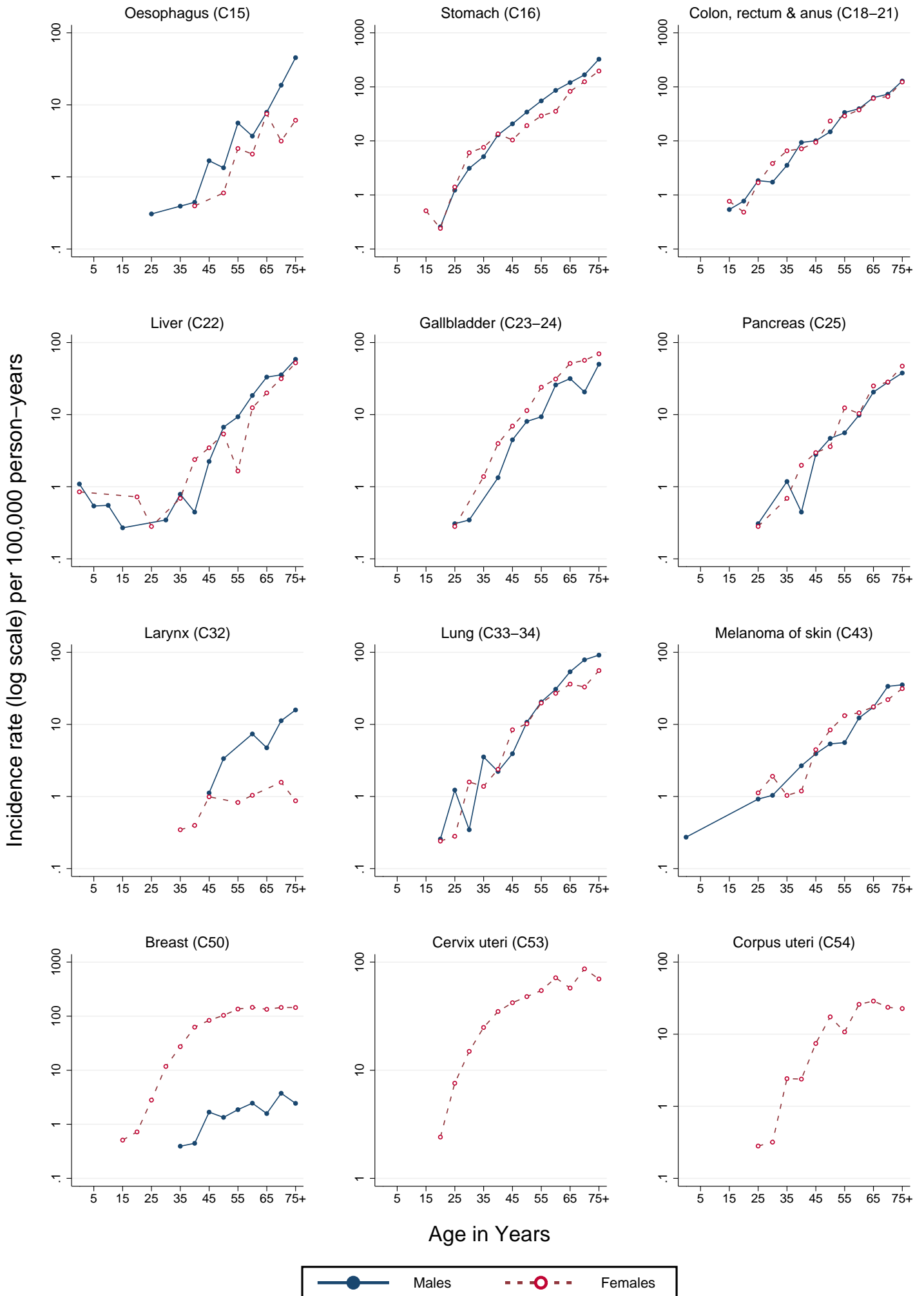
UNK, Unknown; ASR (W), Age Standardized Rate (World Population); CUM., Cumulative; MV, Microscopic Verification; DCO, Death Certificate Only

†Percent

‡Rank based on highest ASR excluding: All sites but C44 and All sites

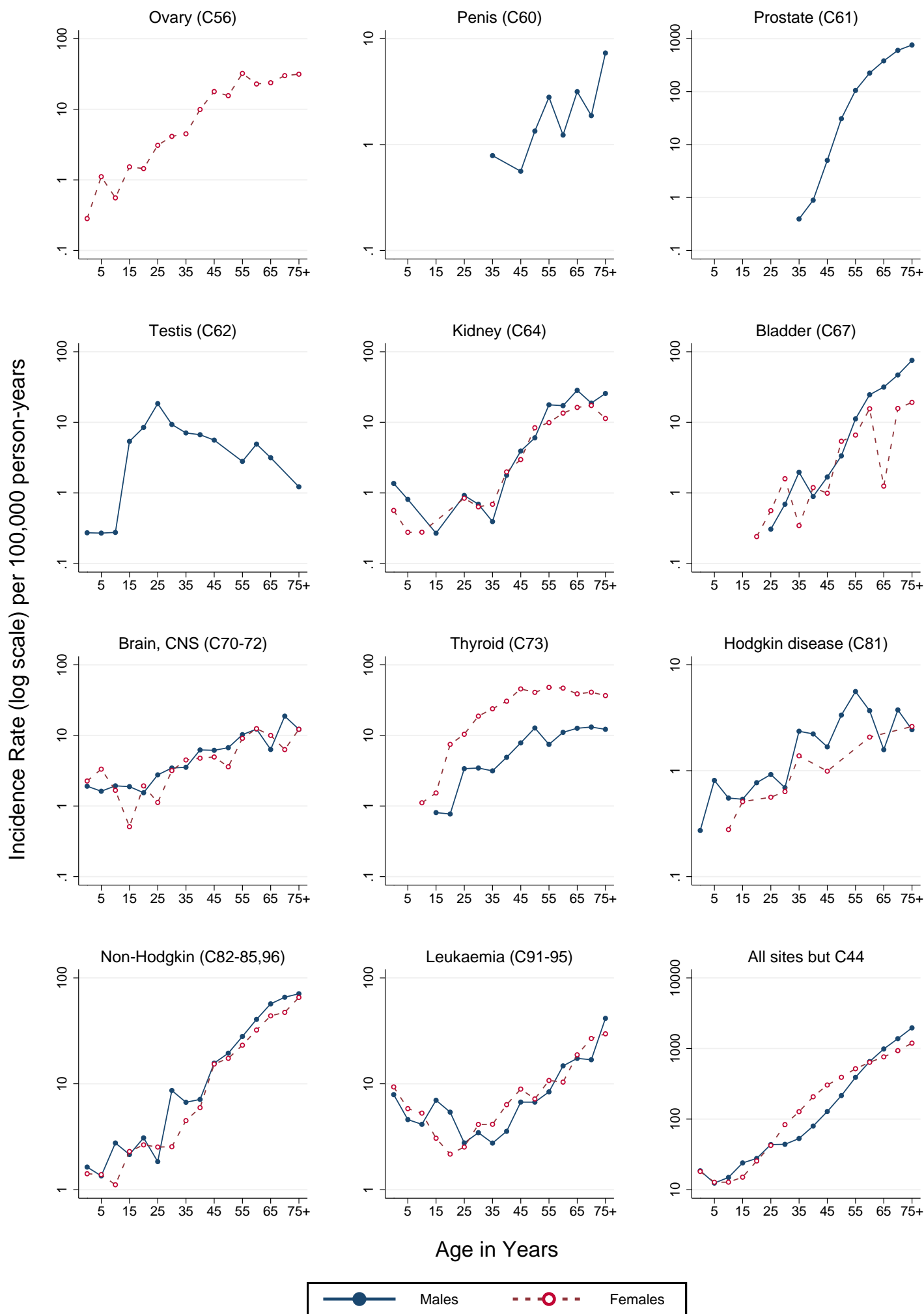
# ECUADOR, QUITO (2003–2007)

Age-specific incidence rates per 100,000 person-years



# ECUADOR, QUITO (2003-2007)

Age-specific incidence rates per 100,000 person-years



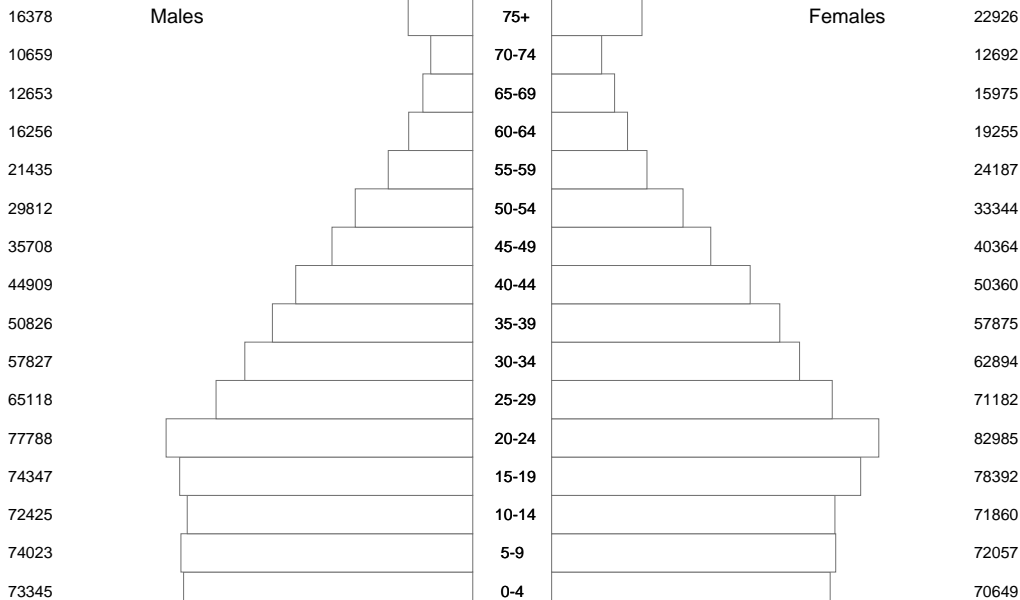


# ECUADOR, QUITO (2003-2007)

Average annual person-years

Males

Females



100 90 80 70 60 50 40 30 20 10 0 0 10 20 30 40 50 60 70 80 90 100

Population in Thousands

## Country's Summary Tables and Figures

# ECUADOR<sup>1,2</sup>

(2003-2007)

<sup>1</sup> Country's incidence rates were estimated using data from the population-based cancer registries of Cuenca and Quito

<sup>2</sup> National mortality data obtained from the WHO mortality database:  
[http://www.who.int/healthinfo/statistics/mortality\\_rawdata/en/index.html](http://www.who.int/healthinfo/statistics/mortality_rawdata/en/index.html)

**ECUADOR\* (2003-2007)**  
**Number of Cases in Major Diagnosis Groups**  
**per Calendar Year**

SITE	YEAR					TOTAL n (%)
	2003 n (%)	2004 n (%)	2005 n (%)	2006 n (%)	2007 n (%)	
<b>MALES</b>						
Lip, oral cavity, and pharynx (C00-C14)	11 (0.8)	16 (1.1)	14 (0.8)	15 (0.9)	14 (0.8)	70 (0.9)
Digestive organs (C15-C26)	334 (23.3)	316 (22.3)	409 (24.2)	377 (22.2)	406 (23.7)	1842 (23.2)
Respiratory organs (C30-C39)	64 (4.5)	59 (4.2)	94 (5.6)	68 (4.0)	89 (5.2)	374 (4.7)
Bone, cartilage, and skin (C40-C44)	246 (17.2)	278 (19.7)	328 (19.4)	347 (20.4)	331 (19.3)	1530 (19.3)
Breast (C50)	3 (0.2)	3 (0.2)	1 (0.1)	4 (0.2)	6 (0.4)	17 (0.2)
Male genitalia (C60-C63)	407 (28.4)	363 (25.7)	417 (24.7)	481 (28.3)	469 (27.4)	2137 (26.9)
Urinary organs (C64-C68)	55 (3.8)	64 (4.5)	76 (4.5)	78 (4.6)	62 (3.6)	335 (4.2)
Eye, brain, and thyroid (C69-C75)	74 (5.2)	59 (4.2)	85 (5.0)	77 (4.5)	73 (4.3)	368 (4.6)
Hematopoietic (C81-C96)	157 (11.0)	189 (13.4)	181 (10.7)	171 (10.0)	187 (10.9)	885 (11.1)
Other and unspecified	81 (5.7)	67 (4.7)	82 (4.9)	84 (4.9)	74 (4.3)	388 (4.9)
All sites	1432 (100.0)	1414 (100.0)	1687 (100.0)	1702 (100.0)	1711 (100.0)	7946 (100.0)
<b>FEMALES</b>						
Lip, oral cavity, and pharynx (C00-C14)	11 (0.6)	34 (1.9)	17 (0.8)	18 (0.9)	14 (0.7)	94 (0.9)
Digestive organs (C15-C26)	354 (20.6)	364 (20.3)	452 (20.6)	459 (22.1)	428 (20.0)	2057 (20.7)
Respiratory organs (C30-C39)	53 (3.1)	45 (2.5)	53 (2.4)	63 (3.0)	71 (3.3)	285 (2.9)
Bone, cartilage, and skin (C40-C44)	314 (18.3)	307 (17.2)	408 (18.6)	384 (18.5)	362 (16.9)	1775 (17.9)
Breast (C50)	263 (15.3)	271 (15.1)	340 (15.5)	344 (16.6)	358 (16.7)	1576 (15.9)
Female genitalia (C51-C58)	297 (17.3)	304 (17.0)	371 (16.9)	288 (13.9)	336 (15.7)	1596 (16.1)
Urinary organs (C64-C68)	31 (1.8)	49 (2.7)	46 (2.1)	47 (2.3)	48 (2.2)	221 (2.2)
Eye, brain, and thyroid (C69-C75)	138 (8.0)	168 (9.4)	210 (9.6)	219 (10.5)	264 (12.3)	999 (10.1)
Hematopoietic (C81-C96)	168 (9.8)	184 (10.3)	189 (8.6)	169 (8.1)	155 (7.2)	865 (8.7)
Other and unspecified	87 (5.1)	63 (3.5)	106 (4.8)	85 (4.1)	105 (4.9)	446 (4.5)
All sites	1716 (100.0)	1789 (100.0)	2192 (100.0)	2076 (100.0)	2141 (100.0)	9914 (100.0)
<b>BOTH SEXES</b>						
Lip, oral cavity, and pharynx (C00-C14)	22 (0.7)	50 (1.6)	31 (0.8)	33 (0.9)	28 (0.7)	164 (0.9)
Digestive organs (C15-C26)	688 (21.9)	680 (21.2)	861 (22.2)	836 (22.1)	834 (21.7)	3899 (21.8)
Respiratory organs (C30-C39)	117 (3.7)	104 (3.2)	147 (3.8)	131 (3.5)	160 (4.2)	659 (3.7)
Bone, cartilage, and skin (C40-C44)	560 (17.8)	585 (18.3)	736 (19.0)	731 (19.3)	693 (18.0)	3305 (18.5)
Urinary organs (C64-C68)	86 (2.7)	113 (3.5)	122 (3.1)	125 (3.3)	110 (2.9)	556 (3.1)
Eye, brain, and thyroid (C69-C75)	212 (6.7)	227 (7.1)	295 (7.6)	296 (7.8)	337 (8.7)	1367 (7.7)
Hematopoietic (C81-C96)	325 (10.3)	373 (11.6)	370 (9.5)	340 (9.0)	342 (8.9)	1750 (9.8)
Other and unspecified	168 (5.3)	130 (4.1)	188 (4.8)	169 (4.5)	179 (4.6)	834 (4.7)
All sites	3148 (100.0)	3203 (100.0)	3879 (100.0)	3778 (100.0)	3852 (100.0)	17860 (100.0)

\*Aggregated data from the population-based cancer registries of Cuenca and Quito

**ECUADOR\* (2003-2007)**  
**Age Standardized Incidence Rate (World Population) per 100,000**  
**in Major Diagnosis Groups per Calendar Year**

SITE	YEAR					TOTAL ASR (%)
	2003 ASR (%)	2004 ASR (%)	2005 ASR (%)	2006 ASR (%)	2007 ASR (%)	
<b>MALES</b>						
Lip, oral cavity, and pharynx (C00-C14)	1.5 (0.8)	1.9 (1.0)	1.9 (0.9)	1.7 (0.8)	1.8 (0.8)	1.8 (0.9)
Digestive organs (C15-C26)	43.0 (23.5)	40.8 (22.4)	52.5 (24.6)	47.7 (22.4)	51.6 (23.9)	47.0 (23.4)
Respiratory organs (C30-C39)	8.3 (4.5)	7.7 (4.2)	12.5 (5.8)	8.7 (4.1)	11.3 (5.2)	9.7 (4.8)
Bone, cartilage, and skin (C40-C44)	32.5 (17.8)	36.1 (19.8)	42.3 (19.8)	43.7 (20.6)	42.4 (19.6)	39.3 (19.6)
Breast (C50)	0.4 (0.2)	0.4 (0.2)	0.2 (0.1)	0.6 (0.3)	0.7 (0.3)	0.5 (0.2)
Male genitalia (C60-C63)	51.7 (28.2)	47.7 (26.1)	52.4 (24.6)	59.6 (28.1)	60.3 (27.9)	54.2 (27.0)
Urinary organs (C64-C68)	7.3 (4.0)	8.8 (4.8)	9.3 (4.4)	10.6 (5.0)	8.1 (3.8)	8.8 (4.4)
Eye, brain, and thyroid (C69-C75)	9.3 (5.1)	7.1 (3.9)	10.4 (4.9)	9.3 (4.4)	8.4 (3.9)	8.9 (4.4)
Hematopoietic (C81-C96)	19.1 (10.4)	23.1 (12.7)	21.9 (10.3)	20.7 (9.7)	21.9 (10.1)	21.3 (10.6)
Other and unspecified	10.1 (5.5)	8.8 (4.8)	10.0 (4.7)	10.0 (4.7)	9.6 (4.5)	9.7 (4.8)
All sites	183.2 (100.0)	182.6 (100.0)	213.2 (100.0)	212.5 (100.0)	216.2 (100.0)	201.2 (100.0)
<b>FEMALES</b>						
Lip, oral cavity, and pharynx (C00-C14)	1.1 (0.6)	3.4 (1.8)	1.7 (0.7)	1.8 (0.9)	1.3 (0.6)	1.9 (0.9)
Digestive organs (C15-C26)	33.8 (19.0)	36.7 (19.3)	45.7 (20.2)	45.6 (21.5)	43.9 (20.1)	41.1 (20.1)
Respiratory organs (C30-C39)	5.7 (3.2)	4.5 (2.4)	5.5 (2.4)	6.4 (3.0)	7.6 (3.5)	6.0 (2.9)
Bone, cartilage, and skin (C40-C44)	31.3 (17.7)	31.2 (16.4)	40.7 (18.0)	37.7 (17.8)	35.5 (16.2)	35.2 (17.2)
Breast (C50)	29.6 (16.7)	30.6 (16.1)	37.8 (16.7)	36.5 (17.2)	37.5 (17.2)	34.4 (16.8)
Female genitalia (C51-C58)	31.5 (17.8)	33.4 (17.6)	38.6 (17.1)	30.8 (14.5)	34.6 (15.8)	33.7 (16.5)
Urinary organs (C64-C68)	2.9 (1.6)	5.8 (3.0)	5.0 (2.2)	5.3 (2.5)	5.1 (2.3)	4.8 (2.3)
Eye, brain, and thyroid (C69-C75)	14.2 (8.0)	17.9 (9.4)	21.2 (9.4)	21.9 (10.3)	26.5 (12.1)	20.4 (10.0)
Hematopoietic (C81-C96)	18.3 (10.3)	20.1 (10.5)	19.1 (8.5)	17.5 (8.2)	15.7 (7.2)	18.1 (8.8)
Other and unspecified	8.8 (5.0)	6.8 (3.6)	10.8 (4.8)	8.7 (4.1)	10.6 (4.9)	9.1 (4.4)
All sites	177.3 (100.0)	190.4 (100.0)	226.0 (100.0)	212.3 (100.0)	218.4 (100.0)	204.8 (100.0)
<b>BOTH SEXES</b>						
Lip, oral cavity, and pharynx (C00-C14)	1.3 (0.7)	2.7 (1.5)	1.8 (0.8)	1.7 (0.8)	1.5 (0.7)	1.8 (0.9)
Digestive organs (C15-C26)	37.9 (21.2)	38.5 (20.7)	48.7 (22.2)	46.4 (22.0)	47.2 (21.8)	43.7 (21.6)
Respiratory organs (C30-C39)	6.9 (3.8)	5.9 (3.2)	8.6 (3.9)	7.4 (3.5)	9.2 (4.3)	7.6 (3.8)
Bone, cartilage, and skin (C40-C44)	31.9 (17.8)	33.5 (18.0)	41.5 (18.9)	40.4 (19.1)	38.7 (17.9)	37.1 (18.3)
Urinary organs (C64-C68)	4.9 (2.7)	7.1 (3.8)	6.8 (3.1)	7.7 (3.6)	6.4 (3.0)	6.6 (3.3)
Eye, brain, and thyroid (C69-C75)	11.9 (6.6)	12.9 (7.0)	16.2 (7.4)	16.1 (7.6)	18.1 (8.4)	15.1 (7.5)
Hematopoietic (C81-C96)	18.6 (10.4)	21.4 (11.5)	20.4 (9.3)	19.0 (9.0)	18.6 (8.6)	19.6 (9.7)
Other and unspecified	9.4 (5.3)	7.7 (4.2)	10.3 (4.7)	9.3 (4.4)	10.2 (4.7)	9.4 (4.6)
All sites	179.0 (100.0)	185.9 (100.0)	219.3 (100.0)	211.3 (100.0)	216.2 (100.0)	202.1 (100.0)

\*Aggregated data from the population-based cancer registries of Cuenca and Quito

## ECUADOR\* (2003-2007)

### Incidence per 100,000 by Age Group (years)

#### Males

SITE	ALL CASES	UNK AGE	0-4	5-9	10-14	15-19	20-24	25-29	30-34	35-39	40-44	45-49	50-54	55-59	60-64	65-69	70-74	75+	CRUDE RATE	ASR (W)	CUM. RATE (0-74)†	MV (%)	DCO (%)	Rank‡	ICD10
Lip, oral cavity, and pharynx (C00-14)	70	0	.	.	.	0.2	0.2	.	.	1.3	0.4	0.9	4.2	6.5	4.6	10.7	7.2	22.4	1.5	1.8	0.18	96	3	19	C00-14
Oesophagus (C15)	83	2	.	.	.	.	0.2	0.2	.	0.3	0.4	1.8	1.1	6.5	3.7	8.3	14.4	37.7	1.7	2.0	0.19	82	11	18	C15
Stomach (C16)	900	8	.	.	3.0	1.4	3.0	1.4	3.0	5.4	11.5	19.1	33.8	54.1	79.7	113.9	166.9	309.7	19.0	22.7	2.47	79	13	2	C16
Colon (C18)	254	1	.	.	.	0.4	0.6	1.4	1.1	1.3	5.8	5.8	7.9	17.3	20.4	30.8	47.5	76.3	5.4	6.4	0.70	86	8		C18
Rectum (C19-20)	125	1	.	.	.	0.2	0.2	0.5	0.3	1.6	1.8	3.1	3.7	9.4	16.7	22.5	17.3	30.5	2.6	3.3	0.39	91	4		C19-20
Colorectal (C18-20)	379	2	.	.	.	0.4	0.8	1.9	1.4	2.9	7.6	8.9	11.6	26.7	37.1	53.4	64.7	106.8	8.0	9.7	1.09	88	7	4	C18-20
Anus (C21)	7	0	.	.	.	.	.	.	.	.	.	.	0.5	.	.	1.2	2.9	2.7	0.1	0.2	0.02	86	0	27	C21
Colon, rectum and anus (C18-21)	386	2	.	.	.	0.4	0.8	1.9	1.4	2.9	7.6	8.9	12.1	26.7	37.1	54.6	67.6	109.5	8.1	9.9	1.12	88	7		C18-21
Liver (C22)	169	0	1.0	0.4	0.6	0.2	.	.	0.8	0.6	0.4	1.8	5.8	7.9	17.6	35.6	31.7	49.4	3.6	4.5	0.52	53	24	9	C22
Gallbladder (C23-24)	147	1	.	.	.	.	.	0.2	0.3	.	1.4	4.0	6.9	8.7	20.4	24.9	20.1	44.0	3.1	3.9	0.44	54	20	12	C23-24
Pancreas (C25)	120	0	.	.	.	.	.	0.2	0.3	1.0	0.4	4.0	4.2	5.8	10.2	23.7	24.5	36.8	2.5	3.1	0.37	32	31	16	C25
Nose, sinuses (C30-31)	20	0	.	.	.	0.2	.	0.5	.	.	0.7	1.8	.	2.2	0.9	2.4	4.3	1.8	0.4	0.5	0.06	90	0	23	C30-31
Larynx (C32)	46	0	.	.	.	.	.	.	.	.	0.4	0.9	4.2	0.7	7.4	3.6	10.1	14.4	1.0	1.2	0.14	87	4	21	C32
Lung, trachea and bronchus (C33-34)	288	0	.	.	.	0.2	0.2	1.0	0.3	2.9	2.2	3.6	11.6	16.6	28.7	43.9	71.9	86.2	6.1	7.5	0.91	69	14	5	C33-34
Melanoma of skin (C43)	125	3	0.4	.	.	0.2	.	0.7	0.8	0.3	3.2	3.1	6.3	5.0	10.2	14.2	28.8	30.5	2.6	3.2	0.38	98	1	15	C43
Mesothelioma (C45)	10	0	.	.	.	.	.	0.2	.	0.3	.	0.4	0.5	0.7	.	1.2	2.9	1.8	0.2	0.2	0.03	100	0	26	C45
Kaposi sarcoma (C46)	31	0	.	.	.	0.2	0.4	1.0	0.6	1.9	1.1	0.4	1.1	1.4	0.9	1.2	1.4	4.5	0.7	0.7	0.06	97	3	22	C46
Breast (C50)	17	0	.	.	.	.	.	.	.	0.3	0.4	1.3	1.1	1.4	1.9	1.2	2.9	2.7	0.4	0.5	0.05	88	0	25	C50
Penis (C60)	19	0	.	.	.	.	.	.	.	1.0	.	0.4	1.1	2.2	0.9	2.4	1.4	5.4	0.4	0.5	0.05	84	0	24	C60
Prostate (C61)	1883	13	.	.	.	.	.	.	.	0.3	1.1	4.9	32.2	97.3	198.3	333.3	538.1	709.2	39.7	49.1	6.07	88	7	1	C61
Testis (C62)	224	3	0.2	0.2	0.2	4.6	7.2	16.4	9.1	6.0	5.4	4.9	0.5	2.9	3.7	3.6	.	0.9	4.7	4.4	0.33	96	0	10	C62
Kidney (C64)	140	2	1.2	0.6	.	0.2	.	1.0	0.6	0.6	1.8	3.6	4.8	15.9	15.8	24.9	15.8	24.2	3.0	3.8	0.44	78	11	13	C64
Bladder (C67)	190	1	.	.	.	.	.	0.2	0.6	1.6	1.1	2.2	2.6	9.4	21.3	30.8	47.5	65.5	4.0	4.9	0.59	91	3	8	C67
Brain, CNS (C70-72)	176	0	1.5	2.0	1.9	1.8	1.6	2.7	3.0	3.5	5.0	5.8	6.9	10.1	12.0	10.7	15.8	11.7	3.7	4.2	0.42	88	3	11	C70-72
Thyroid (C73)	143	1	.	.	.	0.8	0.6	2.9	2.8	2.9	4.3	7.1	10.6	6.5	9.3	13.0	14.4	14.4	3.0	3.5	0.38	92	4	14	C73
Hodgkin disease (C81)	55	0	0.2	1.0	0.4	0.4	0.6	0.7	0.6	1.9	1.8	1.3	3.2	4.3	2.8	1.2	2.9	4.5	1.2	1.3	0.12	100	0	20	C81
Non-Hodgkin lymphoma (C82-85,C96)	422	4	1.2	1.2	2.1	1.6	2.8	2.2	8.3	6.7	6.1	13.3	16.9	26.0	36.1	49.8	64.7	65.5	8.9	10.6	1.21	98	1	3	C82-85,C96
Multiple myeloma (C88+C90)	106	0	.	.	.	.	.	.	0.6	1.0	2.5	2.7	6.3	11.5	9.3	14.2	10.1	27.8	2.2	2.7	0.29	96	1	17	C88+C90
Lymphoid leukaemia (C91)	162	0	5.8	3.7	3.1	5.5	2.8	1.2	1.1	1.6	1.4	1.8	0.5	3.6	4.6	4.7	5.8	17.1	3.4	3.5	0.24	99	1		C91
Myeloid leukaemia (C92-94)	105	0	1.2	0.2	1.2	1.0	1.2	1.0	1.4	1.9	1.4	4.9	4.2	2.9	5.6	8.3	4.3	20.6	2.2	2.4	0.20	100	0		C92-94
Leukaemia unspecified (C95)	35	0	0.8	0.4	0.4	0.2	0.4	0.2	0.6	0.3	0.7	.	1.1	1.4	3.7	1.2	4.3	5.4	0.7	0.8	0.08	80	17		C95
Leukaemia (C91-95)	302	0	7.9	4.3	4.8	6.7	4.4	2.4	3.0	3.8	3.6	6.7	5.8	7.9	13.9	14.2	14.4	43.1	6.4	6.7	0.52	97	2	6	C91-95
Other and unspecified (O&U)	209	0	0.4	.	.	0.2	1.0	0.7	1.9	1.0	2.5	3.1	7.4	11.5	23.2	32.0	53.2	49.4	4.4	5.5	0.69	72	14	7	O&U
All sites but C44 (ALLbC44)	6599	41	17.4	12.1	14.1	22.0	23.8	40.1	40.9	51.0	71.2	117.8	203.8	356.1	588.3	897.8	1271.8	1817.9	139.1	166.2	18.76	85	8		ALLbC44
All sites (ALL)	7946	83	17.4	12.3	14.7	23.0	25.8	43.7	46.7	55.8	89.6	141.3	257.1	454.1	715.3	1082.8	1549.5	2184.2	167.5	201.2	22.88	87	7		ALL

\*Aggregated data from the population-based cancer registries of Cuenca and Quito  
UNK, Unknown; ASR (W), Age Standardized Rate (World Population); CUM., Cumulative; MV, Microscopic Verification; DCO, Death Certificate Only  
†Percent  
‡Rank based on highest ASR excluding: All sites but C44 and All sites

## ECUADOR\* (2003-2007) Incidence per 100,000 by Age Group (years) Females

SITE	ALL CASES	UNK AGE	0-4	5-9	10-14	15-19	20-24	25-29	30-34	35-39	40-44	45-49	50-54	55-59	60-64	65-69	70-74	75+	CRUDE RATE	ASR (W)	CUM. RATE (0-74)†	MV (%)	DCO (%)	Rank‡	ICD10
Lip, oral cavity, and pharynx (C00-14)	94	0	.	.	0.2	0.2	0.4	1.1	1.0	0.5	1.6	2.3	3.7	6.8	4.6	3.7	15.2	16.6	1.8	1.9	0.21	95	4	19	C00-14
Oesophagus (C15)	29	1	.	.	.	.	.	0.4	.	.	0.3	.	0.9	1.9	1.5	5.5	4.7	5.1	0.6	0.6	0.08	79	10	21	C15
Stomach (C16)	764	5	.	.	0.4	0.4	0.6	1.5	5.2	7.1	12.8	11.9	17.0	29.8	34.6	79.5	123.6	195.7	14.9	14.7	1.63	73	19	4	C16
Colon (C18)	345	1	.	.	0.4	0.4	0.6	0.9	2.2	3.5	2.8	5.8	12.0	22.9	22.3	38.8	42.0	76.1	6.7	7.0	0.77	81	11		C18
Rectum (C19-20)	137	0	.	.	0.2	0.2	.	0.4	0.7	2.4	3.7	3.5	8.3	5.0	6.9	9.2	15.2	27.5	2.7	2.7	0.28	85	5		C19-20
Colorectal (C18-20)	482	1	.	.	0.6	0.6	0.6	1.3	3.0	6.0	6.5	9.2	20.3	27.9	29.2	48.1	57.1	103.6	9.4	9.7	1.05	82	9	5	C18-20
Anus (C21)	27	0	.	.	.	.	.	.	.	.	0.3	0.4	1.8	0.6	1.5	5.5	3.5	5.8	0.5	0.6	0.07	96	4	22	C21
Colon, rectum and anus (C18-21)	509	1	.	.	0.6	0.6	0.6	1.3	3.0	6.0	6.8	9.6	22.1	28.5	30.8	53.6	60.6	109.4	9.9	10.2	1.12	83	9		C18-21
Liver (C22)	203	1	0.6	.	.	.	0.6	0.2	0.2	0.5	2.8	3.1	6.0	5.0	13.1	20.3	38.5	52.5	3.9	4.0	0.46	47	34	13	C22
Gallbladder (C23-24)	321	2	.	.	.	.	.	0.2	.	1.1	4.0	6.9	11.5	21.1	25.4	44.4	51.3	63.3	6.2	6.8	0.83	59	14	8	C23-24
Pancreas (C25)	179	0	.	.	.	.	.	0.2	0.2	0.8	1.6	2.7	3.2	10.5	12.3	26.8	28.0	44.8	3.5	3.7	0.43	38	27	14	C25
Nose, sinuses (C30-31)	21	0	.	.	.	.	0.2	.	0.2	.	0.6	1.5	0.9	.	2.3	.	2.3	3.8	0.4	0.4	0.04	100	0	24	C30-31
Larynx (C32)	12	0	.	.	.	.	.	.	.	0.3	0.3	0.8	.	1.9	0.8	.	2.3	1.3	0.2	0.3	0.03	75	17	25	C32
Lung, trachea and bronchus (C33-34)	246	2	.	.	0.2	0.4	0.2	0.2	1.2	1.4	2.2	6.5	8.8	14.9	23.1	26.8	31.5	49.3	4.8	5.2	0.59	71	17	11	C33-34
Melanoma of skin (C43)	168	5	.	.	.	0.2	0.2	0.9	2.2	1.1	1.2	3.8	6.4	10.5	13.9	14.8	16.3	33.3	3.3	3.4	0.37	96	0	16	C43
Mesothelioma (C45)	8	0	.	.	.	.	.	0.2	.	0.3	.	0.4	.	1.2	.	0.9	.	1.3	0.2	0.2	0.02	100	0	26	C45
Kaposi sarcoma (C46)	3	0	.	.	.	.	.	.	.	.	.	.	.	.	0.8	0.9	.	0.6	0.1	0.1	0.01	100	0	27	C46
Breast (C50)	1576	9	.	.	0.4	0.6	0.6	2.8	10.7	26.4	59.5	80.7	98.6	118.4	123.1	119.3	121.3	134.3	30.6	34.4	3.83	94	3	1	C50
Cervix uteri (C53)	942	3	.	.	.	2.4	7.9	7.9	14.1	23.9	38.0	41.5	46.1	49.6	70.0	56.4	78.1	74.2	18.3	19.8	2.15	96	1	2	C53
Corpus uteri (C54)	187	3	.	.	.	.	.	0.2	0.7	2.2	2.2	6.5	13.8	11.2	22.3	24.0	19.8	17.9	3.6	4.3	0.52	93	2	12	C54
Ovary (C56)	335	2	0.2	1.1	0.8	1.4	1.3	2.6	3.7	3.8	9.7	15.4	12.9	29.1	21.5	24.0	28.0	28.1	6.5	7.2	0.78	87	5	7	C56
Kidney (C64)	121	0	0.4	0.2	0.2	.	.	0.7	0.7	0.5	1.6	3.1	7.8	8.7	10.8	15.7	18.7	11.5	2.4	2.7	0.35	83	5	17	C64
Bladder (C67)	96	1	.	.	.	0.2	0.2	0.7	1.5	0.5	0.9	0.8	4.1	5.6	13.1	2.8	14.0	17.9	1.9	2.0	0.22	89	9	18	C67
Brain, CNS (C70-72)	170	2	2.1	3.2	1.5	0.4	2.2	1.1	3.0	4.6	4.7	4.2	2.8	6.8	9.2	8.3	8.2	10.9	3.3	3.4	0.32	83	5	15	C70-72
Thyroid (C73)	780	9	.	.	0.8	1.5	6.0	9.2	17.9	24.2	29.6	41.5	36.4	42.2	38.5	34.2	44.3	31.3	15.2	16.0	1.65	97	1	3	C73
Hodgkin disease (C81)	29	1	.	.	0.2	0.6	0.2	0.7	0.7	1.1	.	1.2	.	0.6	1.5	.	1.2	3.8	0.6	0.5	0.04	100	0	23	C81
Non-Hodgkin lymphoma (C82-85,C96)	441	3	1.3	1.1	1.5	1.9	2.0	2.6	2.2	4.6	7.2	13.1	14.7	22.9	30.0	46.2	51.3	65.2	8.6	9.2	1.02	98	0	6	C82-85,C96
Multiple myeloma (C88+C90)	72	0	.	.	.	.	.	.	0.5	.	.	1.2	4.6	6.2	7.7	13.9	11.7	7.7	1.4	1.7	0.23	99	0	20	C88+C90
Lymphoid leukaemia (C91)	172	1	7.5	5.5	2.7	1.9	0.9	0.9	1.5	1.4	2.5	3.8	2.8	3.1	4.6	10.2	9.3	8.3	3.3	3.7	0.29	99	1		C91
Myeloid leukaemia (C92-94)	125	0	1.5	0.2	1.0	1.2	0.9	1.1	2.2	2.4	2.2	3.1	3.2	5.0	4.6	9.2	10.5	14.7	2.4	2.5	0.24	100	0		C92-94
Leukaemia unspecified (C95)	26	0	0.2	0.2	0.2	.	0.2	0.4	0.2	.	0.6	1.5	.	1.9	0.8	.	3.5	3.8	0.5	0.5	0.05	65	15		C95
Leukaemia (C91-95)	323	1	9.2	5.9	4.0	3.1	2.0	2.4	4.0	3.8	5.3	8.5	6.0	9.9	10.0	19.4	23.3	26.9	6.3	6.7	0.59	97	2	9	C91-95
Other and unspecified (O&U)	309	4	0.2	.	0.2	0.6	0.4	0.7	2.5	1.6	3.7	7.7	11.1	13.6	21.5	30.5	46.6	64.0	6.0	6.3	0.71	70	16	10	O&U
All sites but C44 (ALLbC44)	8357	57	17.0	12.0	11.1	13.9	23.5	41.0	79.1	123.5	203.0	284.7	355.2	471.7	564.8	708.3	877.0	1135.4	162.5	174.0	19.06	86	7		ALLbC44
All sites (ALL)	9914	96	17.0	12.2	11.1	14.9	24.4	44.5	84.8	131.1	227.3	314.6	398.5	535.0	672.5	868.3	1071.8	1524.3	192.8	204.8	22.36	88	6		ALL

\*Aggregated data from the population-based cancer registries of Cuenca and Quito  
UNK, Unknown; ASR (W), Age Standardized Rate (World Population); CUM., Cumulative; MV, Microscopic Verification; DCO, Death Certificate Only  
†Percent  
‡Rank based on highest ASR excluding: All sites but C44 and All sites

**ECUADOR (2003-2007)**  
**Number of Deaths in Major Diagnosis Groups**  
**per Calendar Year**

SITE	YEAR					TOTAL n (%)
	2003 n (%)	2004 n (%)	2005 n (%)	2006 n (%)	2007 n (%)	
<b>MALES</b>						
Lip, oral cavity, and pharynx (C00-C14)	47 (1.4)	52 (1.4)	51 (1.3)	62 (1.6)	49 (1.2)	261 (1.4)
Digestive organs (C15-C26)	1588 (48.0)	1711 (47.0)	1753 (46.2)	1886 (47.5)	1878 (46.2)	8816 (46.9)
Respiratory organs (C30-C39)	351 (10.6)	368 (10.1)	400 (10.5)	396 (10.0)	393 (9.7)	1908 (10.2)
Bone, cartilage, and skin (C40-C44)	12 (0.4)	32 (0.9)	26 (0.7)	24 (0.6)	25 (0.6)	119 (0.6)
Male genitalia (C60-C63)	572 (17.3)	660 (18.1)	651 (17.2)	728 (18.3)	742 (18.2)	3353 (17.9)
Urinary organs (C64-C68)	104 (3.1)	83 (2.3)	75 (2.0)	101 (2.5)	122 (3.0)	485 (2.6)
Eye, brain, and thyroid (C69-C75)	131 (4.0)	143 (3.9)	161 (4.2)	161 (4.1)	169 (4.2)	765 (4.1)
Hematopoietic (C81-C96)	355 (10.7)	424 (11.7)	474 (12.5)	432 (10.9)	410 (10.1)	2095 (11.2)
All sites	3308 (100.0)	3639 (100.0)	3792 (100.0)	3970 (100.0)	4069 (100.0)	18778 (100.0)
<b>FEMALES</b>						
Lip, oral cavity, and pharynx (C00-C14)	27 (0.8)	30 (0.8)	38 (0.9)	44 (1.0)	36 (0.8)	175 (0.9)
Digestive organs (C15-C26)	1627 (45.8)	1705 (45.6)	1781 (43.9)	1872 (44.0)	1911 (44.4)	8896 (44.7)
Respiratory organs (C30-C39)	189 (5.3)	250 (6.7)	251 (6.2)	225 (5.3)	259 (6.0)	1174 (5.9)
Bone, cartilage, and skin (C40-C44)	16 (0.5)	23 (0.6)	22 (0.5)	16 (0.4)	16 (0.4)	93 (0.5)
Breast (C50)	331 (9.3)	304 (8.1)	326 (8.0)	405 (9.5)	352 (8.2)	1718 (8.6)
Female genitalia (C51-C58)	745 (21.0)	755 (20.2)	825 (20.3)	854 (20.1)	829 (19.2)	4008 (20.1)
Urinary organs (C64-C68)	59 (1.7)	53 (1.4)	60 (1.5)	71 (1.7)	66 (1.5)	309 (1.6)
Eye, brain, and thyroid (C69-C75)	132 (3.7)	131 (3.5)	184 (4.5)	212 (5.0)	196 (4.6)	855 (4.3)
Hematopoietic (C81-C96)	294 (8.3)	360 (9.6)	333 (8.2)	363 (8.5)	359 (8.3)	1709 (8.6)
All sites	3553 (100.0)	3738 (100.0)	4057 (100.0)	4259 (100.0)	4307 (100.0)	19914 (100.0)
<b>BOTH SEXES</b>						
Lip, oral cavity, and pharynx (C00-C14)	74 (1.1)	82 (1.1)	89 (1.1)	106 (1.3)	85 (1.0)	436 (1.1)
Digestive organs (C15-C26)	3215 (46.9)	3416 (46.3)	3534 (45.0)	3758 (45.7)	3789 (45.2)	17712 (45.8)
Respiratory organs (C30-C39)	540 (7.9)	618 (8.4)	651 (8.3)	621 (7.5)	652 (7.8)	3082 (8.0)
Bone, cartilage, and skin (C40-C44)	28 (0.4)	55 (0.7)	48 (0.6)	40 (0.5)	41 (0.5)	212 (0.5)
Urinary organs (C64-C68)	163 (2.4)	136 (1.8)	135 (1.7)	172 (2.1)	188 (2.2)	794 (2.1)
Eye, brain, and thyroid (C69-C75)	263 (3.8)	274 (3.7)	345 (4.4)	373 (4.5)	365 (4.4)	1620 (4.2)
Hematopoietic (C81-C96)	649 (9.5)	784 (10.6)	807 (10.3)	795 (9.7)	769 (9.2)	3804 (9.8)
All sites	6861 (100.0)	7377 (100.0)	7849 (100.0)	8229 (100.0)	8376 (100.0)	38692 (100.0)

**ECUADOR (2003-2007)**  
**Age Standardized Mortality Rate (World Population) per 100,000**  
**in Major Diagnosis Groups per Calendar Year**

SITE	YEAR					TOTAL ASMR (%)
	2003 ASMR (%)	2004 ASMR (%)	2005 ASMR (%)	2006 ASMR (%)	2007 ASMR (%)	
<b>MALES</b>						
Lip, oral cavity, and pharynx (C00-C14)	0.9 (1.4)	1.0 (1.4)	0.9 (1.4)	1.2 (1.7)	0.8 (1.2)	1.0 (1.4)
Digestive organs (C15-C26)	31.9 (49.5)	33.0 (48.2)	32.9 (47.7)	33.5 (48.5)	32.2 (47.0)	32.7 (48.1)
Respiratory organs (C30-C39)	7.0 (10.9)	7.2 (10.5)	7.5 (10.9)	6.9 (10.0)	6.7 (9.8)	7.1 (10.4)
Bone, cartilage, and skin (C40-C44)	0.3 (0.4)	0.6 (0.9)	0.5 (0.7)	0.4 (0.6)	0.4 (0.6)	0.4 (0.7)
Male genitalia (C60-C63)	10.8 (16.7)	12.1 (17.6)	11.4 (16.5)	12.2 (17.7)	11.9 (17.4)	11.7 (17.2)
Urinary organs (C64-C68)	2.1 (3.3)	1.7 (2.4)	1.4 (2.0)	1.8 (2.6)	2.1 (3.0)	1.8 (2.7)
Eye, brain, and thyroid (C69-C75)	2.5 (3.8)	2.6 (3.8)	2.8 (4.1)	2.7 (3.9)	2.8 (4.1)	2.7 (4.0)
Hematopoietic (C81-C96)	6.4 (9.9)	7.3 (10.7)	8.1 (11.7)	7.1 (10.3)	6.7 (9.8)	7.1 (10.5)
All sites	64.5 (100.0)	68.5 (100.0)	69.0 (100.0)	69.1 (100.0)	68.6 (100.0)	68.0 (100.0)
<b>FEMALES</b>						
Lip, oral cavity, and pharynx (C00-C14)	0.5 (0.8)	0.5 (0.8)	0.6 (0.9)	0.7 (1.0)	0.6 (0.8)	0.6 (0.9)
Digestive organs (C15-C26)	28.8 (45.4)	28.5 (44.4)	29.3 (43.3)	29.6 (43.2)	32.1 (44.5)	29.6 (44.1)
Respiratory organs (C30-C39)	3.3 (5.3)	4.4 (6.9)	4.2 (6.2)	3.7 (5.4)	4.3 (6.0)	4.0 (5.9)
Bone, cartilage, and skin (C40-C44)	0.3 (0.5)	0.4 (0.7)	0.4 (0.5)	0.2 (0.4)	0.3 (0.4)	0.3 (0.5)
Breast (C50)	6.3 (9.9)	5.6 (8.7)	5.8 (8.6)	6.8 (9.9)	6.0 (8.4)	6.1 (9.1)
Female genitalia (C51-C58)	13.5 (21.3)	13.4 (20.9)	14.0 (20.7)	14.2 (20.7)	14.0 (19.4)	13.8 (20.6)
Urinary organs (C64-C68)	1.1 (1.7)	0.9 (1.4)	1.0 (1.5)	1.2 (1.7)	1.1 (1.5)	1.1 (1.6)
Eye, brain, and thyroid (C69-C75)	2.4 (3.7)	2.2 (3.4)	3.0 (4.5)	3.4 (4.9)	3.2 (4.4)	2.8 (4.2)
Hematopoietic (C81-C96)	5.1 (8.1)	6.0 (9.3)	5.4 (7.9)	5.6 (8.2)	5.8 (8.0)	5.6 (8.3)
All sites	63.6 (100.0)	64.3 (100.0)	67.7 (100.0)	68.6 (100.0)	72.0 (100.0)	67.2 (100.0)
<b>BOTH SEXES</b>						
Lip, oral cavity, and pharynx (C00-C14)	0.7 (1.1)	0.7 (1.1)	0.8 (1.1)	0.9 (1.4)	0.7 (1.0)	0.8 (1.1)
Digestive organs (C15-C26)	30.3 (47.6)	30.6 (46.5)	31.0 (45.6)	31.4 (45.9)	32.1 (45.7)	31.1 (46.2)
Respiratory organs (C30-C39)	5.1 (7.9)	5.7 (8.6)	5.7 (8.5)	5.2 (7.6)	5.5 (7.8)	5.4 (8.1)
Bone, cartilage, and skin (C40-C44)	0.3 (0.4)	0.5 (0.8)	0.4 (0.6)	0.3 (0.5)	0.3 (0.5)	0.4 (0.6)
Urinary organs (C64-C68)	1.6 (2.5)	1.3 (1.9)	1.2 (1.7)	1.5 (2.2)	1.6 (2.3)	1.4 (2.1)
Eye, brain, and thyroid (C69-C75)	2.4 (3.8)	2.4 (3.6)	2.9 (4.3)	3.1 (4.5)	3.0 (4.3)	2.8 (4.1)
Hematopoietic (C81-C96)	5.7 (9.0)	6.6 (10.0)	6.7 (9.9)	6.4 (9.3)	6.3 (8.9)	6.3 (9.4)
All sites	63.7 (100.0)	65.9 (100.0)	67.9 (100.0)	68.4 (100.0)	70.4 (100.0)	67.3 (100.0)



**ECUADOR (2003-2007)**  
**Mortality per 100,000 by Age Group (years)**  
**Males**

SITE	ALL DEATHS	UNK AGE	0-4	5-9	10-14	15-19	20-24	25-29	30-34	35-39	40-44	45-49	50-54	55-59	60-64	65-69	70-74	75+	CRUDE RATE	ASMR (W)	CUM. RATE (0-74)†	Rank‡	ICD10
Lip, oral cavity, & pharynx (C00-14)	261	0	.	.	0.0	0.0	0.0	0.1	0.2	0.2	0.3	0.6	1.3	1.9	2.1	5.9	6.9	16.0	0.8	1.0	0.1	12	C00-14
Oesophagus (C15)	339	0	.	.	.	0.0	0.0	0.0	.	0.0	0.3	0.7	1.0	3.5	2.6	6.7	9.4	25.0	1.0	1.3	0.1	9	C15
Stomach (C16)	4262	0	0.0	.	0.1	0.2	0.6	1.5	3.0	4.2	7.2	10.8	16.2	28.0	49.9	75.0	132.3	263.8	12.7	15.8	1.6	1	C16
Colon (C18)	772	0	.	0.0	0.0	0.0	0.3	0.6	0.5	0.8	1.4	2.0	4.0	5.8	8.5	10.8	21.8	46.9	2.3	2.8	0.3		C18
Rectum (C19-C20)	0	0	.	.	.	.	.	.	.	.	.	.	.	.	.	.	.	.	0.0	0.0	0.0		C19-C20
Colorectal (C18-20)	0	0	.	.	.	.	.	.	.	.	.	.	.	.	.	.	.	.	0.0	0.0	0.0	23	C18-20
Rectum and anus (C19-21)	182	0	0.0	.	0.0	.	0.1	0.2	0.1	0.2	0.5	0.6	1.3	1.3	2.0	1.9	4.0	10.6	0.5	0.7	0.1		C19-21
Colon, rectum and anus (C18-21)	954	0	0.0	0.0	0.1	0.0	0.3	0.8	0.6	1.0	1.9	2.6	5.3	7.1	10.5	12.6	25.8	57.4	2.8	3.5	0.3		C18-21
Liver (C22)	1326	0	0.3	0.2	0.1	0.1	0.4	0.4	0.8	1.2	1.6	3.0	6.1	10.4	16.3	27.3	38.4	73.2	3.9	5.0	0.5	4	C22
Gallbladder (C23-24)	303	0	.	.	.	.	.	0.0	.	0.0	0.5	0.9	1.4	2.1	4.7	6.5	10.1	16.9	0.9	1.2	0.1	10	C23-24
Pancreas (C25)	643	0	.	.	.	.	.	0.2	0.2	0.7	1.0	2.1	3.0	5.6	7.0	12.2	20.1	37.1	1.9	2.4	0.3	6	C25
Nose, sinuses (C30-31)	0	0	.	.	.	.	.	.	.	.	.	.	.	.	.	.	.	.	0.0	0.0	0.0	23	C30-31
Larynx (C32)	182	0	.	.	.	.	.	0.1	0.0	0.1	0.2	0.7	1.2	1.2	2.0	3.4	4.4	11.8	0.5	0.7	0.1	14	C32
Lung, trachea and bronchus (C33-34)	1726	0	0.2	0.1	0.3	0.2	0.4	0.6	1.0	1.4	1.8	2.8	5.5	10.9	17.7	34.1	56.4	112.0	5.1	6.4	0.7	3	C33-34
Melanoma of skin (C43)	119	0	.	.	.	.	0.1	0.0	.	0.1	0.2	0.4	1.0	0.8	1.5	2.0	2.3	7.0	0.4	0.4	0.0	17	C43
Mesothelioma (C45)	11	0	.	.	.	.	.	.	.	0.0	.	0.1	0.1	.	0.1	0.5	.	0.5	0.0	0.0	0.0	20	C45
Kaposi sarcoma (C46)	0	0	.	.	.	.	.	.	.	.	.	.	.	.	.	.	.	.	0.0	0.0	0.0	23	C46
Breast (C50)	0	0	.	.	.	.	.	.	.	.	.	.	.	.	.	.	.	.	0.0	0.0	0.0	23	C50
Penis (C60)	0	0	.	.	.	.	.	.	.	.	.	.	.	.	.	.	.	.	0.0	0.0	0.0	23	C60
Prostate (C61)	3247	0	.	.	.	0.0	0.1	0.1	0.1	0.2	0.5	0.9	2.4	7.1	17.3	41.5	98.7	346.2	9.6	11.4	0.8	2	C61
Testis (C62)	106	0	.	.	.	0.1	0.3	0.6	0.5	0.7	0.3	0.1	0.4	0.4	0.5	0.8	1.0	3.1	0.3	0.3	0.0	19	C62
Kidney (C64)	285	0	0.1	0.1	.	0.1	0.1	0.2	0.1	.	0.6	1.4	2.1	2.6	4.7	6.1	5.7	11.3	0.8	1.1	0.1	11	C64
Bladder (C67)	200	0	.	.	.	0.0	.	0.0	0.0	0.1	0.3	0.3	0.2	0.7	1.9	3.7	6.1	16.8	0.6	0.7	0.1	13	C67
Brain, CNS (C70-72)	637	0	0.5	0.8	0.6	0.8	0.7	1.0	1.4	1.4	2.3	1.8	3.7	5.3	5.4	8.6	13.2	13.5	1.9	2.2	0.2	8	C70-72
Thyroid (C73)	128	0	.	.	.	0.0	.	0.1	0.1	0.2	0.2	0.5	0.5	0.8	2.1	2.0	2.9	7.4	0.4	0.5	0.0	16	C73
Hodgkin disease (C81)	107	0	.	0.1	0.1	0.1	0.1	0.2	0.1	0.2	0.1	0.3	0.7	0.9	1.6	1.6	1.5	3.7	0.3	0.4	0.0	18	C81
Non-Hodgkin lymphoma (C82-85,C96)	652	0	0.2	0.4	0.4	0.5	0.5	0.7	0.7	1.2	1.5	1.7	3.4	4.8	8.5	10.0	15.7	25.1	1.9	2.4	0.3	7	C82-85,C96
Multiple myeloma (C88+C90)	148	0	.	.	0.0	.	.	.	0.0	0.1	0.4	0.3	0.7	1.9	2.1	3.4	4.0	7.0	0.4	0.6	0.1	15	C88+C90
Lymphoid leukaemia (C91)	0	0	.	.	.	.	.	.	.	.	.	.	.	.	.	.	.	.	0.0	0.0	0.0		C91
Myeloid leukaemia (C92-94)	0	0	.	.	.	.	.	.	.	.	.	.	.	.	.	.	.	.	0.0	0.0	0.0		C92-94
Leukaemia unspecified (C95)	0	0	.	.	.	.	.	.	.	.	.	.	.	.	.	.	.	.	0.0	0.0	0.0		C95
Leukaemia (C91-95)	1188	0	2.3	2.2	2.8	3.2	2.6	2.0	2.2	2.8	2.3	3.4	3.8	3.6	7.6	9.3	15.3	26.7	3.5	3.8	0.3	5	C91-95
All cancers but lung (C00-97/C33-34)	17052	0	4.3	4.5	5.4	6.4	7.5	9.2	12.0	17.2	24.6	37.9	63.8	101.8	189.1	271.6	462.2	1066.2	50.7	61.6	6.0		C00-97/C33-34
All sites (ALL)	18778	0	4.4	4.6	5.6	6.6	7.8	9.9	13.1	18.6	26.4	40.7	69.3	112.7	186.8	305.7	518.6	1178.3	55.8	68.0	6.7		ALL

UNK, Unknown; ASMR (W), Age Standardized Mortality Rate (World Population); CUM., Cumulative

†Percent

‡Rank based on highest ASMR excluding: All sites but lung and All sites

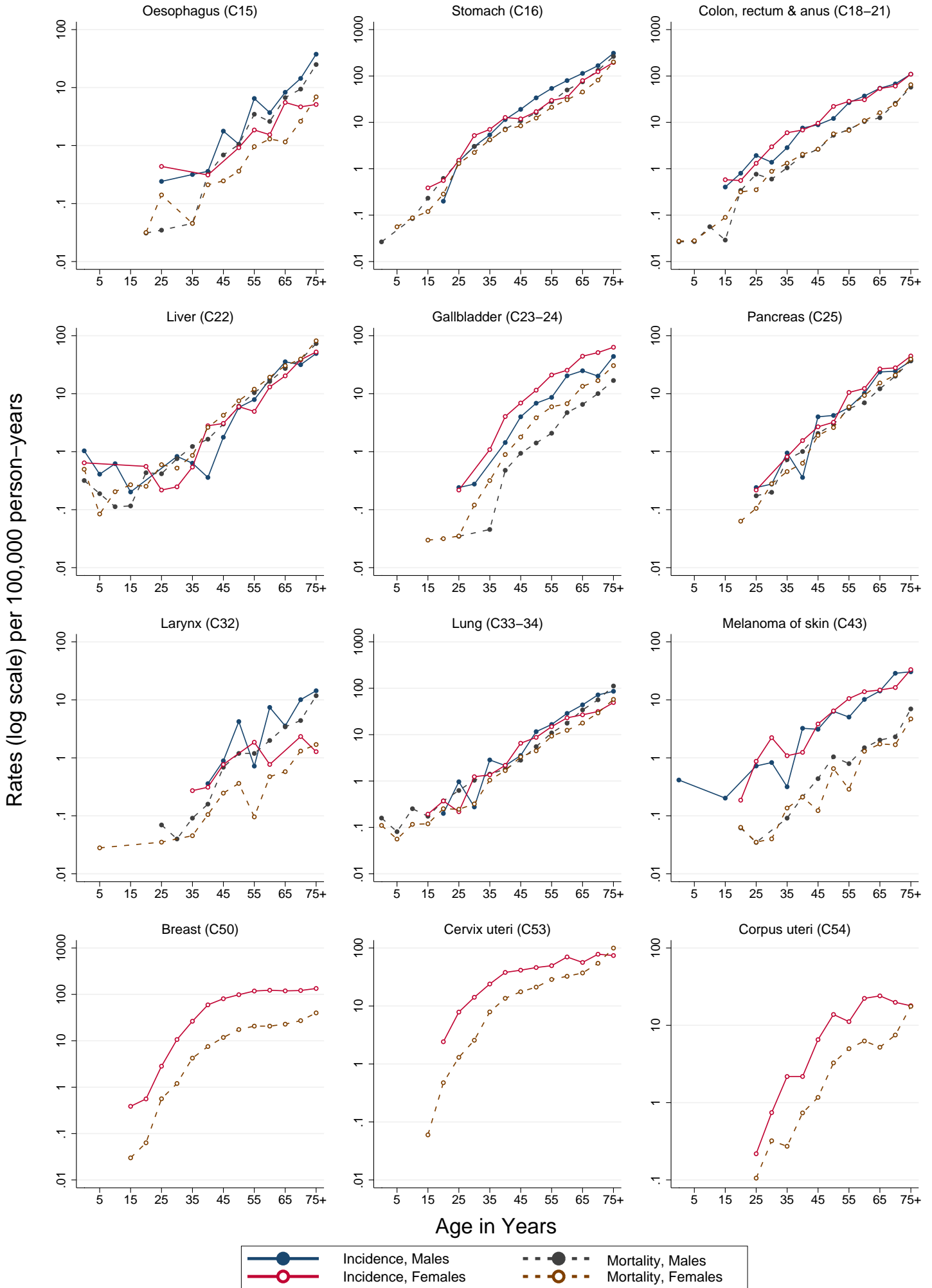
**ECUADOR (2003-2007)**  
**Mortality per 100,000 by Age Group (years)**  
**Females**

SITE	ALL DEATHS	UNK AGE	0-4	5-9	10-14	15-19	20-24	25-29	30-34	35-39	40-44	45-49	50-54	55-59	60-64	65-69	70-74	75+	CRUDE RATE	ASMR (W)	CUM. RATE (0-74)†	Rank‡	ICD10	
Lip, oral cavity, & pharynx (C00-14)	175	0	.	.	.	0.0	0.1	0.1	0.0	0.0	0.3	0.6	0.8	1.3	2.0	1.4	4.5	10.1	0.5	0.6	0.1	15	C00-14	
Oesophagus (C15)	115	0	.	.	.	.	0.0	0.1	.	0.0	0.2	0.2	0.4	1.0	1.3	1.2	2.6	6.9	0.3	0.4	0.0	17	C15	
Stomach (C16)	3406	0	0.1	0.1	0.1	0.3	1.3	2.2	4.2	6.9	8.4	12.4	21.1	21.1	30.8	45.3	81.5	200.2	10.2	11.2	1.1	1	C16	
Colon (C18)	924	0	0.0	.	.	0.1	0.3	0.3	0.8	1.1	1.6	2.0	4.7	5.5	8.6	13.0	19.7	53.3	2.8	3.0	0.3		C18	
Rectum (C19-C20)	0	0	.	.	.	.	.	.	.	.	.	.	.	.	.	.	.	.	0.0	0.0	0.0	0.0		C19-C20
Colorectal (C18-20)	0	0	.	.	.	.	.	.	.	.	.	.	.	.	.	.	.	.	0.0	0.0	0.0	0.0	24	C18-20
Rectum and anus (C19-21)	214	0	0.0	0.0	0.0	0.0	0.1	0.1	0.1	0.2	0.4	0.7	0.9	1.2	2.2	3.2	4.9	11.6	0.6	0.7	0.1		C19-21	
Colon, rectum and anus (C18-21)	1138	0	0.0	0.0	0.1	0.3	0.4	0.9	1.3	2.1	2.6	5.7	12.0	12.0	19.3	30.5	39.5	81.8	4.9	5.6	0.6	4	C22	
Liver (C22)	1654	0	0.5	0.1	0.2	0.3	0.3	0.6	0.5	0.9	2.6	4.2	7.5	12.0	19.3	30.5	39.5	81.8	4.9	5.6	0.6	4	C22	
Gallbladder (C23-24)	648	0	.	.	.	0.0	0.0	0.0	0.1	0.3	0.9	1.8	3.8	6.0	6.7	13.4	16.9	30.5	1.9	2.2	0.3	8	C23-24	
Pancreas (C25)	763	0	.	.	.	0.1	0.1	0.1	0.3	0.5	0.6	1.9	2.6	6.0	9.4	15.3	21.0	39.5	2.3	2.6	0.3	7	C25	
Nose, sinuses (C30-31)	0	0	.	.	.	.	.	.	.	.	.	.	.	.	.	.	.	.	0.0	0.0	0.0	0.0	24	C30-31
Larynx (C32)	43	0	0.0	0.0	0.0	0.0	0.0	0.0	0.0	0.0	0.1	0.2	0.4	0.1	0.5	0.6	1.3	1.7	0.1	0.1	0.0	21	C32	
Lung, trachea and bronchus (C33-34)	1131	0	0.1	0.1	0.1	0.3	0.2	0.3	1.0	1.7	3.3	4.5	9.3	9.3	12.4	17.8	29.4	57.6	3.4	3.8	0.4	5	C33-34	
Melanoma of skin (C43)	93	0	.	.	.	0.1	0.0	0.0	0.1	0.2	0.1	0.1	0.7	0.3	1.3	1.7	1.7	4.7	0.3	0.3	0.0	19	C43	
Mesothelioma (C45)	12	0	.	.	.	0.0	.	.	.	.	.	.	0.1	0.2	0.1	0.3	0.4	0.4	0.0	0.0	0.0	22	C45	
Kaposi sarcoma (C46)	0	0	.	.	.	.	.	.	.	.	.	.	.	.	.	.	.	.	0.0	0.0	0.0	0.0	24	C46
Breast (C50)	1718	0	.	.	.	0.0	0.1	0.6	1.2	4.2	7.5	11.8	17.5	20.7	20.7	22.8	27.2	39.9	5.1	6.1	0.7	3	C50	
Cervix uteri (C53)	3014	0	.	.	.	0.1	0.5	1.3	2.6	7.9	13.6	17.6	21.2	28.7	32.5	37.2	54.5	99.7	9.0	10.4	1.1	2	C53	
Corpus uteri (C54)	411	0	.	.	.	.	0.1	0.3	0.3	0.3	0.7	1.2	3.3	5.0	6.3	5.2	7.5	17.6	1.2	1.4	0.1	12	C54	
Ovary (C56)	583	0	.	0.2	0.1	0.3	0.4	0.7	0.9	1.9	3.6	4.4	5.9	7.1	7.8	10.1	16.7	1.7	2.0	2.0	0.2	9	C56	
Kidney (C64)	204	0	0.1	0.1	0.0	0.0	0.0	0.0	0.2	0.0	0.2	0.4	1.5	1.8	2.1	4.2	4.7	8.6	0.6	0.7	0.1	14	C64	
Bladder (C67)	105	0	.	.	.	.	.	.	.	0.0	0.1	0.4	0.4	0.6	1.3	1.0	2.6	6.9	0.3	0.3	0.0	18	C67	
Brain, CNS (C70-72)	587	0	0.7	0.7	0.6	0.5	0.4	0.8	1.2	1.3	1.8	2.5	3.0	4.1	5.6	6.5	6.7	15.3	1.8	1.9	0.2	10	C70-72	
Thyroid (C73)	288	0	.	.	.	.	0.1	0.0	0.1	0.1	0.2	0.7	1.2	2.1	3.0	5.1	6.4	14.6	0.8	0.9	0.1	13	C73	
Hodgkin disease (C81)	69	0	.	.	0.1	0.1	0.1	0.1	0.2	0.1	0.1	0.1	0.3	0.7	0.6	0.4	1.1	3.1	0.2	0.2	0.0	20	C81	
Non-Hodgkin lymphoma (C82-85,C96)	542	0	0.2	0.2	0.2	0.3	0.3	0.6	0.4	0.7	0.9	1.6	2.4	5.2	5.4	8.7	11.1	21.3	1.6	1.8	0.2	11	C82-85,C96	
Multiple myeloma (C88+C90)	126	0	.	.	.	0.0	.	.	.	.	0.1	0.4	0.7	1.1	2.4	2.2	4.5	4.7	0.4	0.5	0.1	16	C88+C90	
Lymphoid leukaemia (C91)	0	0	.	.	.	.	.	.	.	.	.	.	.	.	.	.	.	.	0.0	0.0	0.0	0.0		C91
Myeloid leukaemia (C92-94)	0	0	.	.	.	.	.	.	.	.	.	.	.	.	.	.	.	.	0.0	0.0	0.0	0.0		C92-94
Leukaemia unspecified (C95)	0	0	.	.	.	.	.	.	.	.	.	.	.	.	.	.	.	.	0.0	0.0	0.0	0.0		C95
Leukaemia (C91-95)	972	0	2.2	1.8	2.2	1.9	1.5	1.7	1.7	1.8	2.2	3.0	3.8	4.8	5.2	9.3	11.6	19.8	2.9	3.1	0.3	6	C91-95	
All cancers but lung (C00-97/C33-34)	18783	0	4.5	3.2	4.1	4.2	5.3	9.6	14.1	27.7	48.2	72.2	104.6	152.8	195.8	282.8	379.8	809.8	56.2	63.4	6.4		C00-97/C33-34	
All sites (ALL)	19914	0	4.6	3.3	4.2	4.3	5.5	9.9	14.4	28.8	49.8	75.5	109.1	162.1	208.2	280.6	409.2	867.3	59.6	67.2	6.8		ALL	

UNK, Unknown; ASMR (W), Age Standardized Mortality Rate (World Population); CUM., Cumulative †Percent ‡Rank based on highest ASMR excluding: All sites but lung and All sites

# ECUADOR (2003–2007)

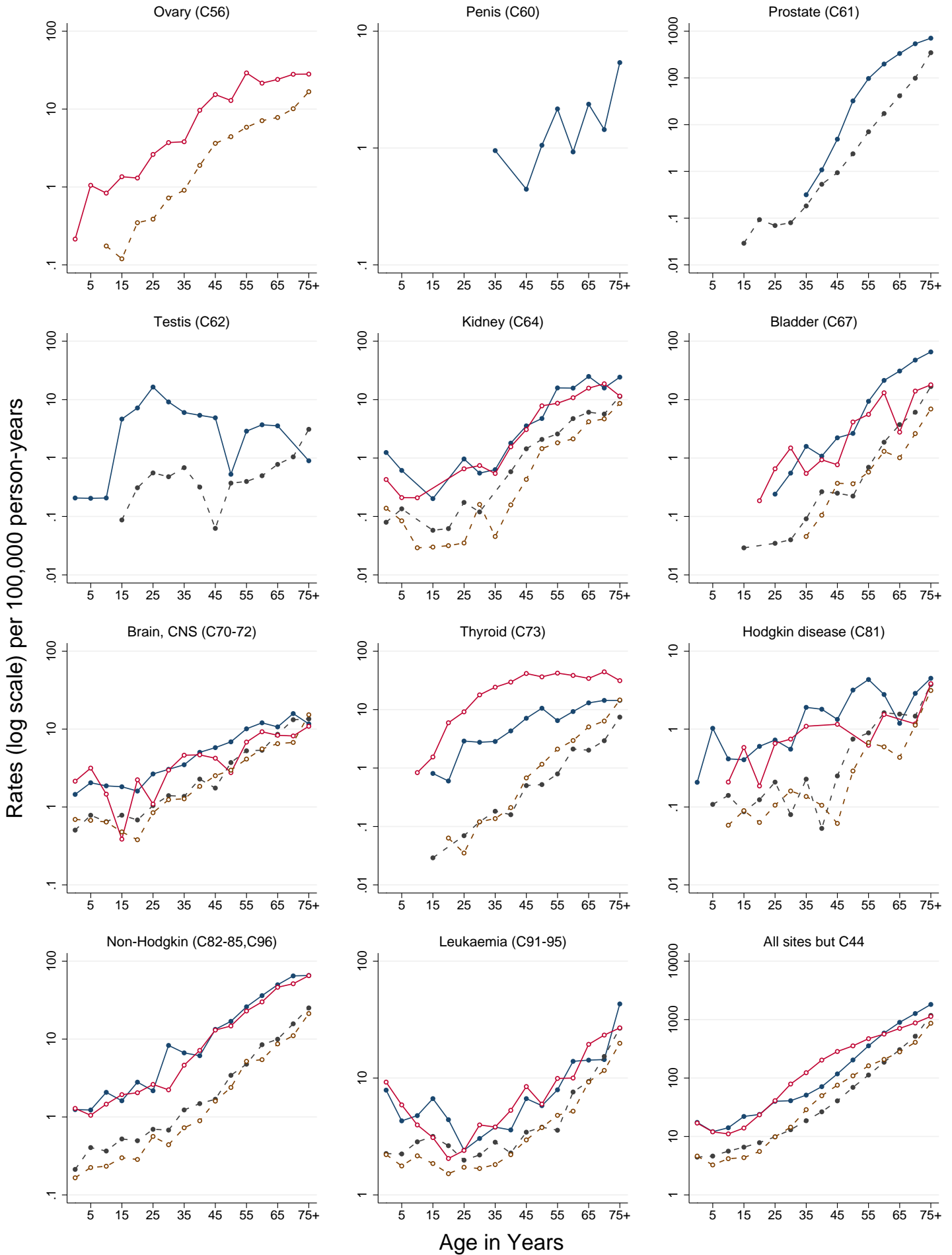
Age-specific incidence\* and mortality rates per 100,000 person-years



\*Aggregated data from the population-based cancer registries of Cuenca and Quito

# ECUADOR (2003-2007)

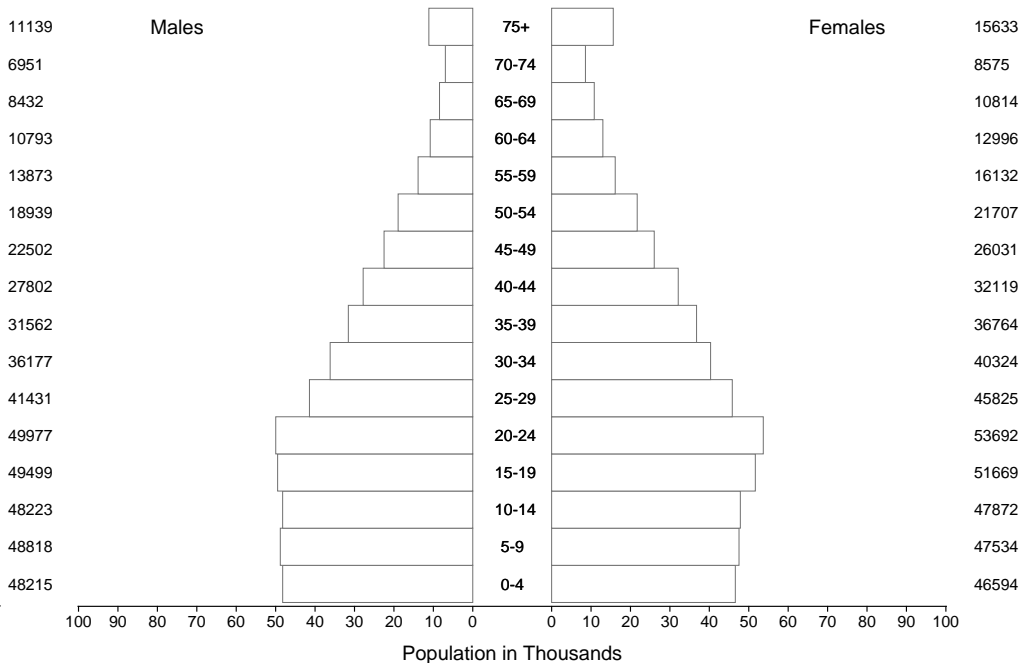
Age-specific incidence\* and mortality rates per 100,000 person-years



\*Aggregated data from the population-based cancer registries of Cuenca and Quito

# ECUADOR\* (2003-2007)

Average annual person-years



\*Agregated population from Cuenca and Quito