

## Cancer in Central and South America

### EL SALVADOR

This country profile for the Cancer in Central and South America project provides, for each participating cancer registry tables and graphics showing numbers of cases and rates by year, sex and age group for major sites of cancer together with a population pyramid. A country summary is also provided based on aggregated registry data and national mortality data from the WHO mortality database:

([http://www.who.int/healthinfo/statistics/mortality\\_rawdata/en/index.html](http://www.who.int/healthinfo/statistics/mortality_rawdata/en/index.html))

Citation of any of these data should be in the following format:

“Sierra MS, Abriata MG, Barrios E, Bravo LE, Cueva P, Fernandez L, Pineros M, Rebelo M, de Vries E, Forman D. Editors on behalf of the Cancer in Central and South America Working Group (2016). Cancer in Central and South America. Lyon: International Agency for Research on Cancer. Available from: [http://www-dep.iarc.fr/CSU\\_resources.htm](http://www-dep.iarc.fr/CSU_resources.htm) accessed [date].”

## Country's Summary Tables and Figures

# EL SALVADOR<sup>1,2,3</sup> (1999-2003)

<sup>1</sup> Country's incidence rates were estimated using data from the cancer registry of El Salvador which includes: passive collection from 30 hospitals (pathology reports) within the country and active data collection from the hospital-based registry Instituto del Cáncer de El Salvador (I.C.E.S) and Rosales National Hospital and the mortality registry of San Salvador department (19 municipalities)

<sup>2</sup> National mortality data obtained from the WHO mortality database:  
[http://www.who.int/healthinfo/statistics/mortality\\_rawdata/en/index.html](http://www.who.int/healthinfo/statistics/mortality_rawdata/en/index.html)

<sup>3</sup> Methodological details are included in "Cancer in Central and South America: Methodology"  
<http://dx.doi.org/10.1016/j.canep.2016.07.020>

## Registry Summary Tables and Figures

# EL SALVADOR (1999-2003)

Registry Director\*: Dr Gonzalo Beltran Castro, Dr Salvador Diaz Bazan O.

Registry Staff\*: Margarita A. de Tomasino, Ruth Noemi Ruiz, Claudia E. Maida Gonzalez, Celia Catalina Iraheta, Claudia Ma. Garcia Canales, Daysi G. de Guerra, Sandra de Carpintero, Karla A. Garcia P., Lorena Magaña, Sandra L. Hernandez

\*Director and staff as notified at time of call for data in 2013. Current contact information for cancer registries in the region can be found at: [http://www.iacr.com.fr/index.php?option=com\\_comprofiler&task=usersList&listid=5](http://www.iacr.com.fr/index.php?option=com_comprofiler&task=usersList&listid=5).

**EL SALVADOR (1999-2003)**  
**Number of Cases in Major Diagnosis Groups**  
**per Calendar Year**

SITE	YEAR					TOTAL n (%)
	1999 n (%)	2000 n (%)	2001 n (%)	2002 n (%)	2003 n (%)	
<b>MALES</b>						
Lip, oral cavity, and pharynx (C00-C14)	33 (5.7)	30 (5.9)	27 (5.3)	25 (5.0)	27 (4.9)	142 (5.4)
Digestive organs (C15-C26)	158 (27.2)	131 (25.8)	134 (26.4)	131 (26.2)	131 (23.9)	685 (25.9)
Respiratory organs (C30-C39)	68 (11.7)	51 (10.0)	59 (11.6)	58 (11.6)	41 (7.5)	277 (10.5)
Bone, cartilage, and skin (C40-C44)	72 (12.4)	55 (10.8)	56 (11.0)	47 (9.4)	61 (11.1)	291 (11.0)
Breast (C50)	2 (0.3)	1 (0.2)	0 (0.0)	1 (0.2)	0 (0.0)	4 (0.2)
Male genitalia (C60-C63)	67 (11.6)	66 (13.0)	49 (9.6)	55 (11.0)	75 (13.7)	312 (11.8)
Urinary organs (C64-C68)	16 (2.8)	25 (4.9)	21 (4.1)	23 (4.6)	29 (5.3)	114 (4.3)
Eye, brain, and thyroid (C69-C75)	30 (5.2)	25 (4.9)	13 (2.6)	22 (4.4)	31 (5.7)	121 (4.6)
Hematopoietic (C81-C96)	87 (15.0)	74 (14.6)	94 (18.5)	88 (17.6)	92 (16.8)	435 (16.5)
Other and unspecified	47 (8.1)	50 (9.8)	55 (10.8)	50 (10.0)	61 (11.1)	263 (9.9)
All sites	580 (100.0)	508 (100.0)	508 (100.0)	500 (100.0)	548 (100.0)	2644 (100.0)
<b>FEMALES</b>						
Lip, oral cavity, and pharynx (C00-C14)	24 (1.5)	25 (1.6)	16 (1.1)	22 (1.5)	24 (1.7)	111 (1.5)
Digestive organs (C15-C26)	172 (10.6)	179 (11.6)	145 (9.7)	162 (10.8)	156 (10.7)	814 (10.7)
Respiratory organs (C30-C39)	36 (2.2)	40 (2.6)	38 (2.5)	30 (2.0)	42 (2.9)	186 (2.4)
Bone, cartilage, and skin (C40-C44)	99 (6.1)	59 (3.8)	63 (4.2)	74 (4.9)	75 (5.2)	370 (4.9)
Breast (C50)	188 (11.6)	191 (12.4)	191 (12.8)	175 (11.7)	173 (11.9)	918 (12.1)
Female genitalia (C51-C58)	821 (50.7)	822 (53.3)	789 (52.7)	761 (50.8)	727 (50.0)	3920 (51.5)
Urinary organs (C64-C68)	19 (1.2)	23 (1.5)	21 (1.4)	17 (1.1)	22 (1.5)	102 (1.3)
Eye, brain, and thyroid (C69-C75)	73 (4.5)	48 (3.1)	54 (3.6)	70 (4.7)	84 (5.8)	329 (4.3)
Hematopoietic (C81-C96)	112 (6.9)	83 (5.4)	102 (6.8)	118 (7.9)	73 (5.0)	488 (6.4)
Other and unspecified	75 (4.6)	72 (4.7)	79 (5.3)	69 (4.6)	78 (5.4)	373 (4.9)
All sites	1619 (100.0)	1542 (100.0)	1498 (100.0)	1498 (100.0)	1454 (100.0)	7611 (100.0)
<b>BOTH SEXES</b>						
Lip, oral cavity, and pharynx (C00-C14)	57 (2.6)	55 (2.7)	43 (2.1)	47 (2.4)	51 (2.5)	253 (2.5)
Digestive organs (C15-C26)	330 (15.0)	310 (15.1)	279 (13.9)	293 (14.7)	287 (14.3)	1499 (14.6)
Respiratory organs (C30-C39)	104 (4.7)	91 (4.4)	97 (4.8)	88 (4.4)	83 (4.1)	463 (4.5)
Bone, cartilage, and skin (C40-C44)	171 (7.8)	114 (5.6)	119 (5.9)	121 (6.1)	136 (6.8)	661 (6.4)
Urinary organs (C64-C68)	35 (1.6)	48 (2.3)	42 (2.1)	40 (2.0)	51 (2.5)	216 (2.1)
Eye, brain, and thyroid (C69-C75)	103 (4.7)	73 (3.6)	67 (3.3)	92 (4.6)	115 (5.7)	450 (4.4)
Hematopoietic (C81-C96)	199 (9.0)	157 (7.7)	196 (9.8)	206 (10.3)	165 (8.2)	923 (9.0)
Other and unspecified	122 (5.5)	122 (6.0)	134 (6.7)	119 (6.0)	139 (6.9)	636 (6.2)
All sites	2199 (100.0)	2050 (100.0)	2006 (100.0)	1998 (100.0)	2002 (100.0)	10255 (100.0)

**EL SALVADOR (1999-2003)**  
**Age Standardized Incidence Rate (World Population) per 100,000**  
**in Major Diagnosis Groups per Calendar Year**

SITE	YEAR					TOTAL ASR (%)
	1999 ASR (%)	2000 ASR (%)	2001 ASR (%)	2002 ASR (%)	2003 ASR (%)	
<b>MALES</b>						
Lip, oral cavity, and pharynx (C00-C14)	1.8 (6.3)	1.5 (6.2)	1.3 (5.4)	1.1 (4.8)	1.3 (5.0)	1.4 (5.6)
Digestive organs (C15-C26)	8.2 (28.7)	6.9 (27.9)	6.7 (27.5)	6.3 (27.0)	6.6 (26.1)	6.9 (27.4)
Respiratory organs (C30-C39)	3.3 (11.8)	2.5 (10.1)	3.0 (12.3)	2.8 (12.0)	2.1 (8.4)	2.7 (10.9)
Bone, cartilage, and skin (C40-C44)	3.5 (12.4)	2.5 (10.1)	2.4 (9.8)	2.2 (9.6)	2.6 (10.3)	2.6 (10.5)
Breast (C50)	0.1 (0.3)	0.1 (0.2)	0 (0.0)	0.1 (0.3)	0 (0.0)	0.0 (0.2)
Male genitalia (C60-C63)	3.1 (10.9)	3.2 (13.0)	2.3 (9.4)	2.5 (10.8)	3.4 (13.6)	2.9 (11.6)
Urinary organs (C64-C68)	0.7 (2.6)	1.1 (4.4)	1.0 (4.2)	1.1 (4.9)	1.3 (5.2)	1.1 (4.2)
Eye, brain, and thyroid (C69-C75)	1.3 (4.6)	1.2 (4.8)	0.7 (2.7)	1.0 (4.2)	1.3 (5.2)	1.1 (4.3)
Hematopoietic (C81-C96)	3.9 (13.9)	3.2 (13.0)	4.2 (17.4)	3.8 (16.1)	3.9 (15.3)	3.8 (15.1)
Other and unspecified	2.4 (8.5)	2.6 (10.3)	2.7 (11.3)	2.4 (10.3)	2.8 (11.0)	2.6 (10.2)
All sites	28.4 (100.0)	24.8 (100.0)	24.3 (100.0)	23.4 (100.0)	25.4 (100.0)	25.2 (100.0)
<b>FEMALES</b>						
Lip, oral cavity, and pharynx (C00-C14)	1.0 (1.4)	0.9 (1.5)	0.6 (0.9)	0.8 (1.3)	0.9 (1.6)	0.8 (1.3)
Digestive organs (C15-C26)	7.6 (10.7)	7.3 (11.2)	6.1 (9.8)	6.3 (10.5)	6.1 (10.6)	6.7 (10.6)
Respiratory organs (C30-C39)	1.5 (2.1)	1.8 (2.8)	1.5 (2.4)	1.2 (2.0)	1.7 (3.0)	1.5 (2.5)
Bone, cartilage, and skin (C40-C44)	4.1 (5.8)	2.4 (3.7)	2.4 (3.8)	2.6 (4.3)	2.7 (4.8)	2.8 (4.5)
Breast (C50)	8.4 (11.9)	8.4 (12.9)	8.1 (13.2)	7.3 (12.2)	7.1 (12.4)	7.9 (12.5)
Female genitalia (C51-C58)	36.6 (51.7)	35.3 (54.3)	33.2 (54.0)	31.5 (52.3)	29.1 (50.7)	33.1 (52.6)
Urinary organs (C64-C68)	0.7 (0.9)	0.8 (1.3)	0.8 (1.3)	0.7 (1.1)	0.8 (1.4)	0.8 (1.2)
Eye, brain, and thyroid (C69-C75)	3.1 (4.3)	1.8 (2.8)	2.1 (3.4)	2.7 (4.5)	3.2 (5.6)	2.6 (4.1)
Hematopoietic (C81-C96)	4.6 (6.4)	3.3 (5.0)	3.8 (6.2)	4.5 (7.4)	2.7 (4.7)	3.7 (5.9)
Other and unspecified	3.2 (4.6)	3.0 (4.6)	3.1 (5.0)	2.6 (4.3)	3.0 (5.2)	3.0 (4.7)
All sites	70.7 (100.0)	65.1 (100.0)	61.5 (100.0)	60.3 (100.0)	57.5 (100.0)	62.9 (100.0)
<b>BOTH SEXES</b>						
Lip, oral cavity, and pharynx (C00-C14)	1.4 (2.6)	1.2 (2.6)	0.9 (2.0)	0.9 (2.2)	1.1 (2.5)	1.1 (2.4)
Digestive organs (C15-C26)	7.8 (15.2)	7.1 (15.2)	6.3 (14.2)	6.3 (14.5)	6.3 (14.7)	6.8 (14.8)
Respiratory organs (C30-C39)	2.3 (4.5)	2.1 (4.6)	2.2 (4.8)	1.9 (4.4)	1.9 (4.4)	2.1 (4.5)
Bone, cartilage, and skin (C40-C44)	3.8 (7.4)	2.4 (5.2)	2.4 (5.3)	2.4 (5.6)	2.7 (6.2)	2.7 (6.0)
Urinary organs (C64-C68)	0.7 (1.4)	0.9 (2.0)	0.9 (2.0)	0.9 (2.0)	1.0 (2.4)	0.9 (2.0)
Eye, brain, and thyroid (C69-C75)	2.3 (4.4)	1.5 (3.3)	1.4 (3.2)	1.9 (4.4)	2.4 (5.5)	1.9 (4.2)
Hematopoietic (C81-C96)	4.3 (8.3)	3.2 (6.9)	4.0 (8.9)	4.1 (9.5)	3.2 (7.5)	3.8 (8.2)
Other and unspecified	2.9 (5.6)	2.8 (6.0)	2.9 (6.5)	2.5 (5.8)	2.9 (6.7)	2.8 (6.1)
All sites	51.5 (100.0)	46.9 (100.0)	44.7 (100.0)	43.7 (100.0)	43.1 (100.0)	45.9 (100.0)

## EL SALVADOR (1999-2003) Incidence per 100,000 by Age Group (years) Males

SITE	ALL CASES	UNK AGE	0-4	5-9	10-14	15-19	20-24	25-29	30-34	35-39	40-44	45-49	50-54	55-59	60-64	65-69	70-74	75+	CRUDE RATE	ASR (W)	CUM. RATE (0-74)†	MV (%)	DCO (%)	Rank‡	ICD10
Lip, oral cavity, and pharynx (C00-14)	142	0	.	.	0.1	0.1	0.2	0.2	.	0.1	1.0	1.2	2.3	3.9	6.9	7.3	10.7	12.4	1.1	1.4	0.17	95	0	5	C00-14
Oesophagus (C15)	64	0	.	.	.	.	.	.	.	0.4	0.2	0.4	1.8	1.4	1.9	4.0	5.6	5.9	0.5	0.6	0.08	77	0	11	C15
Stomach (C16)	369	0	.	.	.	0.1	.	0.4	0.5	1.1	2.4	3.2	8.2	12.5	15.6	22.6	23.5	28.7	2.8	3.7	0.45	86	0	1	C16
Colon (C18)	67	0	.	.	.	0.1	0.3	0.1	0.6	0.1	0.2	1.0	2.1	2.8	2.5	2.4	4.1	2.6	0.5	0.7	0.08	79	0		C18
Rectum (C19-20)	61	0	.	.	.	.	.	0.1	0.2	0.7	1.1	0.8	1.4	2.5	2.2	2.8	3.6	2.0	0.5	0.6	0.08	89	0		C19-20
Colorectal (C18-20)	128	0	.	.	0.1	0.3	0.2	0.8	0.8	0.8	1.3	1.8	3.4	5.3	4.7	5.3	7.7	4.6	1.0	1.3	0.16	84	0	7	C18-20
Anus (C21)	15	0	.	.	.	0.1	.	.	.	.	0.5	0.4	.	0.6	0.3	1.6	1.0	.	0.1	0.2	0.02	93	0	24	C21
Colon, rectum and anus (C18-21)	143	0	.	.	0.1	0.4	0.2	0.8	0.8	0.8	1.8	2.2	3.4	5.8	5.0	6.9	8.7	4.6	1.1	1.5	0.18	85	0		C18-21
Liver (C22)	34	0	.	.	.	0.1	0.1	.	0.2	.	0.2	0.4	0.7	1.4	1.6	1.2	2.0	2.3	0.3	0.3	0.04	56	0	18	C22
Gallbladder (C23-24)	41	0	.	.	.	.	.	.	.	.	.	0.4	0.9	0.8	1.6	2.8	4.1	3.9	0.3	0.4	0.05	46	0	15	C23-24
Pancreas (C25)	24	0	.	.	.	.	.	.	.	.	0.3	.	.	1.1	1.9	2.0	1.0	1.6	0.2	0.3	0.03	21	0	22	C25
Nose, sinuses (C30-31)	23	0	.	.	.	0.1	0.1	0.1	.	0.1	.	.	0.2	1.1	2.5	1.2	.	1.0	0.2	0.2	0.03	96	0	23	C30-31
Larynx (C32)	116	0	.	.	.	.	.	0.1	0.1	0.3	0.3	1.2	0.9	3.3	5.3	6.9	9.2	11.8	0.9	1.1	0.14	90	0	9	C32
Lung, trachea and bronchus (C33-34)	125	0	.	.	0.1	.	.	.	.	0.6	0.5	0.4	2.1	4.4	5.6	7.3	12.8	9.5	1.0	1.3	0.17	77	0	8	C33-34
Melanoma of skin (C43)	47	0	.	.	.	0.1	0.1	0.1	.	.	0.3	0.2	0.2	1.4	1.9	2.8	3.6	5.2	0.4	0.4	0.05	94	0	14	C43
Mesothelioma (C45)	1	0	.	.	.	.	.	.	.	.	.	.	.	.	.	0.4	.	.	0.0	0.0	0.00	100	0	27	C45
Kaposi sarcoma (C46)	2	0	.	.	.	.	.	0.1	.	.	.	.	.	.	.	.	.	0.3	0.0	0.0	0.00	100	0	26	C46
Breast (C50)	4	0	.	.	.	.	.	.	.	.	.	.	0.2	0.3	0.3	.	.	0.3	0.0	0.0	0.00	100	0	25	C50
Penis (C60)	47	0	.	.	.	.	.	0.2	0.1	0.1	0.3	1.2	1.1	0.8	3.4	1.6	3.1	2.0	0.4	0.5	0.06	94	0	13	C60
Prostate (C61)	210	0	.	.	.	0.1	.	.	.	0.1	0.2	0.2	0.5	2.5	7.2	15.4	25.0	27.8	1.6	2.0	0.26	80	0	3	C61
Testis (C62)	48	0	.	.	.	0.5	0.8	0.7	1.1	0.3	1.1	0.4	.	0.6	0.6	.	.	.	0.4	0.4	0.03	94	0	17	C62
Kidney (C64)	31	0	.	.	0.1	0.1	.	.	0.2	0.3	0.2	1.0	0.7	1.4	0.3	1.6	0.5	2.0	0.2	0.3	0.03	90	0	20	C64
Bladder (C67)	78	0	.	.	0.1	0.1	0.1	.	.	0.1	.	0.6	0.2	1.1	3.1	3.2	7.7	10.8	0.6	0.7	0.08	87	0	10	C67
Brain, CNS (C70-72)	66	0	.	.	0.2	0.6	0.7	0.5	0.5	0.4	0.5	1.6	2.3	0.6	1.2	0.8	1.5	0.3	0.5	0.6	0.06	68	0	12	C70-72
Thyroid (C73)	33	0	.	.	0.1	0.2	0.1	.	0.5	0.6	0.8	.	0.2	.	0.9	2.0	0.5	1.6	0.3	0.3	0.03	67	0	21	C73
Hodgkin disease (C81)	49	0	.	.	0.2	0.7	0.5	0.3	0.2	1.0	0.5	0.2	0.2	1.4	0.3	0.8	1.0	0.7	0.4	0.4	0.04	88	0	16	C81
Non-Hodgkin lymphoma (C82-85,C96)	147	0	.	.	0.2	0.7	1.5	0.4	0.6	1.8	1.3	1.2	3.2	5.3	3.4	3.6	4.1	6.2	1.1	1.4	0.14	92	0	6	C82-85,C96
Multiple myeloma (C88-C90)	28	0	.	.	.	.	.	.	.	0.1	0.2	0.8	0.5	1.1	1.9	2.4	0.5	1.0	0.2	0.3	0.04	68	0	19	C88-C90
Lymphoid leukaemia (C91)	54	0	.	.	0.5	0.9	0.4	0.5	0.5	0.1	0.2	0.2	0.7	0.6	1.6	.	.	2.0	0.4	0.4	0.03	74	0		C91
Myeloid leukaemia (C92-94)	138	0	.	.	0.4	1.6	0.9	1.1	1.2	1.0	1.3	1.8	1.4	2.8	2.8	2.0	5.6	3.9	1.1	1.2	0.12	81	0		C92-94
Leukaemia unspecified (C95)	19	0	.	.	0.1	0.3	0.4	0.2	0.4	0.1	.	.	.	.	.	.	1.5	.	0.1	0.1	0.02	58	5		C95
Leukaemia (C91-95)	211	0	.	.	0.9	2.7	1.8	1.8	2.0	1.3	1.5	2.0	2.1	3.3	4.4	2.0	7.2	5.9	1.6	1.7	0.16	77	0	4	C91-95
Other and unspecified (O&U)	209	0	.	.	0.1	0.4	0.5	0.5	0.1	0.6	1.6	3.0	6.4	6.1	7.2	10.9	10.7	13.1	1.6	2.1	0.24	72	0	2	O&U
All sites but C44 (ALLbC44)	2439	0	.	.	2.3	7.8	7.9	6.4	8.0	11.6	16.4	23.6	39.9	63.3	86.3	114.4	149.2	165.3	18.6	23.3	2.69	82	0		ALLbC44
All sites (ALL)	2644	0	.	.	2.3	8.1	8.1	6.5	8.1	12.4	17.3	25.0	41.7	66.9	92.8	127.3	162.0	191.1	20.1	25.2	2.89	83	0		ALL

UNK, Unknown; ASR (W), Age Standardized Rate (World Population); CUM., Cumulative; MV, Microscopic Verification; DCO, Death Certificate Only

†Percent

‡Rank based on highest ASR excluding: All sites but C44 and All sites

## EL SALVADOR (1999-2003) Incidence per 100,000 by Age Group (years) Females

SITE	ALL CASES	UNK AGE	0-4	5-9	10-14	15-19	20-24	25-29	30-34	35-39	40-44	45-49	50-54	55-59	60-64	65-69	70-74	75+	CRUDE RATE	ASR (W)	CUM. RATE (0-74)†	MV (%)	DCO (%)	Rank‡	ICD10
Lip, oral cavity, and pharynx (C00-14)	111	0	.	.	.	0.2	.	.	0.2	0.5	0.7	1.6	0.9	1.8	1.6	5.6	5.5	9.8	0.8	0.8	0.09	95	0	13	C00-14
Oesophagus (C15)	44	0	.	.	.	.	.	.	.	.	0.4	0.3	0.4	0.5	1.8	1.7	2.6	4.3	0.3	0.3	0.04	86	0	17	C15
Stomach (C16)	252	0	.	.	0.1	0.3	0.2	0.4	1.3	2.3	2.1	5.0	5.0	5.0	4.5	13.3	17.0	13.6	1.8	2.0	0.26	88	0	4	C16
Colon (C18)	117	0	.	.	0.1	0.3	0.3	0.1	0.8	1.1	1.5	2.5	2.2	2.5	3.4	3.6	3.8	7.1	0.8	0.9	0.10	85	0		C18
Rectum (C19-20)	74	0	.	.	.	0.2	0.3	0.6	0.2	0.3	1.0	1.5	1.5	1.1	2.6	1.3	6.0	3.0	0.5	0.6	0.08	89	0		C19-20
Colorectal (C18-20)	191	0	.	.	0.1	0.5	0.5	0.7	1.0	1.3	2.4	2.4	3.7	3.6	6.0	5.0	9.8	10.1	1.3	1.5	0.17	87	0	9	C18-20
Anus (C21)	32	0	.	.	.	.	.	.	.	0.3	.	0.5	0.4	0.7	1.1	2.0	0.9	2.3	0.2	0.3	0.03	100	0	21	C21
Colon, rectum and anus (C18-21)	223	0	.	.	0.1	0.5	0.5	0.7	1.4	1.3	2.9	2.9	4.1	4.3	7.1	7.0	10.6	12.4	1.6	1.8	0.20	89	0		C18-21
Liver (C22)	53	0	.	.	0.1	0.2	.	0.2	.	0.5	0.6	1.3	1.4	2.1	2.1	2.3	0.9	2.5	0.4	0.4	0.05	58	0	16	C22
Gallbladder (C23-24)	195	0	.	.	.	.	0.1	.	0.2	0.5	1.1	2.4	4.1	5.2	5.0	9.6	13.2	10.6	1.4	1.6	0.21	64	1	7	C23-24
Pancreas (C25)	35	0	.	.	.	.	.	.	.	0.1	0.3	0.8	0.6	0.7	1.6	1.3	2.1	1.3	0.2	0.3	0.04	31	0	19	C25
Nose, sinuses (C30-31)	17	0	.	.	.	.	.	.	.	0.2	.	0.2	0.4	0.2	0.5	0.3	1.7	1.0	0.1	0.1	0.02	88	0	25	C30-31
Larynx (C32)	26	0	.	.	.	.	.	0.1	.	.	0.3	0.2	.	0.7	0.8	2.3	1.7	1.3	0.2	0.2	0.03	88	0	23	C32
Lung, trachea and bronchus (C33-34)	134	0	.	.	0.1	0.1	.	.	0.1	0.2	0.7	1.1	3.0	2.5	4.5	8.0	7.7	7.8	0.9	1.1	0.14	81	0	11	C33-34
Melanoma of skin (C43)	34	0	.	.	.	.	.	.	0.2	0.1	0.4	0.6	0.6	0.2	1.1	1.0	3.0	1.5	0.2	0.3	0.04	91	0	20	C43
Mesothelioma (C45)	1	0	.	.	.	.	.	.	.	.	.	.	.	.	0.3	.	.	.	0.0	0.0	0.00	100	0	26	C45
Kaposi sarcoma (C46)	1	0	.	.	.	.	.	.	.	.	0.1	.	.	.	.	.	.	.	0.0	0.0	0.00	100	0	27	C46
Breast (C50)	918	0	.	.	.	0.5	1.4	3.1	7.8	11.9	23.9	29.3	29.3	21.8	25.0	21.6	24.7	21.7	6.4	7.9	0.85	96	0	2	C50
Cervix uteri (C53)	3418	0	.	.	0.1	1.5	6.5	17.0	31.8	50.1	69.1	69.1	77.5	85.6	96.7	109.4	98.7	86.6	23.8	28.9	3.22	98	0	1	C53
Corpus uteri (C54)	182	0	.	.	.	0.1	0.1	0.5	0.7	2.1	5.3	5.6	5.6	6.8	5.0	2.7	3.4	6.3	1.3	1.6	0.16	100	0	8	C54
Ovary (C56)	126	0	.	.	0.3	0.4	0.7	0.5	0.4	0.9	0.9	2.6	2.2	2.5	5.3	2.7	3.0	1.8	0.9	1.0	0.11	81	1	12	C56
Kidney (C64)	23	0	.	.	.	.	.	0.1	0.1	.	0.1	0.6	.	0.5	0.5	0.3	2.6	1.3	0.2	0.2	0.02	100	0	24	C64
Bladder (C67)	70	0	.	.	.	.	0.1	0.1	0.2	0.3	1.0	0.4	1.1	1.1	1.1	1.7	3.0	9.1	0.5	0.5	0.04	76	0	15	C67
Brain, CNS (C70-72)	67	0	.	.	0.4	0.3	0.2	0.3	0.5	0.6	0.5	0.6	0.7	2.3	0.5	2.3	1.7	1.0	0.5	0.5	0.06	61	0	14	C70-72
Thyroid (C73)	235	0	.	.	0.2	0.7	0.8	1.4	1.7	3.1	3.4	3.9	4.5	4.3	4.5	5.3	3.8	3.8	1.6	1.9	0.19	62	0	6	C73
Hodgkin disease (C81)	43	0	.	.	0.3	0.3	0.2	0.1	0.5	0.2	0.1	0.2	0.6	0.5	1.1	1.0	1.7	1.0	0.3	0.3	0.03	88	0	18	C81
Non-Hodgkin lymphoma (C82-85,C96)	166	0	.	.	0.3	0.3	0.5	0.4	0.5	0.6	1.1	2.3	1.1	3.4	4.7	5.6	11.1	8.1	1.2	1.3	0.16	96	0	10	C82-85,C96
Multiple myeloma (C88-C90)	26	0	.	.	.	.	.	.	.	0.1	0.1	0.2	0.4	1.4	1.3	0.7	1.7	1.0	0.2	0.2	0.03	77	0	22	C88-C90
Lymphoid leukaemia (C91)	66	0	.	.	0.4	0.5	0.2	0.3	0.3	0.1	0.4	0.3	1.1	1.4	1.8	1.0	2.1	2.5	0.5	0.5	0.05	77	0		C91
Myeloid leukaemia (C92-94)	165	0	.	.	0.5	1.7	0.8	0.7	0.7	1.0	1.6	2.1	2.4	2.3	2.4	3.3	4.7	4.5	1.2	1.2	0.12	84	0		C92-94
Leukaemia unspecified (C95)	22	0	.	.	0.2	0.1	0.2	0.3	0.2	0.2	0.4	.	.	0.2	0.3	.	0.4	.	0.2	0.2	0.01	55	0		C95
Leukaemia (C91-95)	253	0	.	.	1.0	2.3	1.3	1.4	1.2	1.4	2.4	2.4	3.5	3.9	4.5	4.3	7.2	7.1	1.8	1.9	0.18	79	0	5	C91-95
Other and unspecified (O&U)	297	0	.	.	0.1	0.3	0.4	0.3	0.5	1.4	1.9	4.2	3.7	7.5	7.4	13.6	14.9	17.7	2.1	2.4	0.28	74	0	3	O&U
All sites but C44 (ALLbC44)	7328	0	.	.	3.4	6.2	8.0	14.6	29.4	54.9	84.7	133.5	155.3	170.4	200.0	238.1	259.1	249.1	51.1	60.7	6.79	91	0		ALLbC44
All sites (ALL)	7611	0	.	.	3.4	6.2	8.1	14.7	29.8	55.6	86.1	136.7	158.5	175.9	204.8	252.0	273.2	276.1	53.1	62.9	7.02	91	0		ALL

UNK, Unknown; ASR (W), Age Standardized Rate (World Population); CUM., Cumulative; MV, Microscopic Verification; DCO, Death Certificate Only

†Percent

‡Rank based on highest ASR excluding: All sites but C44 and All sites

**EL SALVADOR (1999-2003)**  
**Number of Deaths in Major Diagnosis Groups**  
**per Calendar Year**

SITE	YEAR					TOTAL n (%)
	1999 n (%)	2000 n (%)	2001 n (%)	2002 n (%)	2003 n (%)	
<b>MALES</b>						
Lip, oral cavity, and pharynx (C00-C14)	32 (2.8)	25 (2.0)	25 (1.9)	32 (2.4)	29 (2.1)	143 (2.2)
Digestive organs (C15-C26)	447 (39.6)	526 (42.7)	552 (42.4)	545 (40.6)	527 (38.7)	2597 (40.8)
Respiratory organs (C30-C39)	73 (6.5)	117 (9.5)	126 (9.7)	149 (11.1)	136 (10.0)	601 (9.4)
Bone, cartilage, and skin (C40-C44)	0 (0.0)	2 (0.2)	2 (0.2)	0 (0.0)	0 (0.0)	4 (0.1)
Male genitalia (C60-C63)	165 (14.6)	157 (12.8)	160 (12.3)	157 (11.7)	185 (13.6)	824 (12.9)
Urinary organs (C64-C68)	9 (0.8)	18 (1.5)	18 (1.4)	33 (2.5)	18 (1.3)	96 (1.5)
Eye, brain, and thyroid (C69-C75)	45 (4.0)	58 (4.7)	55 (4.2)	58 (4.3)	81 (5.9)	297 (4.7)
Hematopoietic (C81-C96)	93 (8.2)	92 (7.5)	118 (9.1)	102 (7.6)	121 (8.9)	526 (8.3)
All sites	1128 (100.0)	1231 (100.0)	1301 (100.0)	1341 (100.0)	1363 (100.0)	6364 (100.0)
<b>FEMALES</b>						
Lip, oral cavity, and pharynx (C00-C14)	6 (0.4)	21 (1.2)	16 (0.9)	22 (1.2)	18 (1.0)	83 (0.9)
Digestive organs (C15-C26)	527 (32.9)	607 (35.1)	612 (33.8)	612 (33.3)	618 (33.2)	2976 (33.7)
Respiratory organs (C30-C39)	73 (4.6)	97 (5.6)	107 (5.9)	92 (5.0)	113 (6.1)	482 (5.5)
Bone, cartilage, and skin (C40-C44)	0 (0.0)	3 (0.2)	1 (0.1)	0 (0.0)	0 (0.0)	4 (0.0)
Breast (C50)	106 (6.6)	91 (5.3)	100 (5.5)	107 (5.8)	108 (5.8)	512 (5.8)
Female genitalia (C51-C58)	422 (26.4)	434 (25.1)	467 (25.8)	446 (24.3)	425 (22.8)	2194 (24.8)
Urinary organs (C64-C68)	17 (1.1)	14 (0.8)	23 (1.3)	27 (1.5)	20 (1.1)	101 (1.1)
Eye, brain, and thyroid (C69-C75)	49 (3.1)	65 (3.8)	58 (3.2)	63 (3.4)	76 (4.1)	311 (3.5)
Hematopoietic (C81-C96)	64 (4.0)	95 (5.5)	107 (5.9)	115 (6.3)	101 (5.4)	482 (5.5)
All sites	1600 (100.0)	1731 (100.0)	1808 (100.0)	1839 (100.0)	1862 (100.0)	8840 (100.0)
<b>BOTH SEXES</b>						
Lip, oral cavity, and pharynx (C00-C14)	38 (1.4)	46 (1.6)	41 (1.3)	54 (1.7)	47 (1.5)	226 (1.5)
Digestive organs (C15-C26)	974 (35.7)	1133 (38.3)	1164 (37.4)	1157 (36.4)	1145 (35.5)	5573 (36.7)
Respiratory organs (C30-C39)	146 (5.4)	214 (7.2)	233 (7.5)	241 (7.6)	249 (7.7)	1083 (7.1)
Bone, cartilage, and skin (C40-C44)	0 (0.0)	5 (0.2)	3 (0.1)	0 (0.0)	0 (0.0)	8 (0.1)
Urinary organs (C64-C68)	26 (1.0)	32 (1.1)	41 (1.3)	60 (1.9)	38 (1.2)	197 (1.3)
Eye, brain, and thyroid (C69-C75)	94 (3.4)	123 (4.2)	113 (3.6)	121 (3.8)	157 (4.9)	608 (4.0)
Hematopoietic (C81-C96)	157 (5.8)	187 (6.3)	225 (7.2)	217 (6.8)	222 (6.9)	1008 (6.6)
All sites	2728 (100.0)	2962 (100.0)	3109 (100.0)	3180 (100.0)	3225 (100.0)	15204 (100.0)



**EL SALVADOR (1999-2003)**  
**Age Standardized Mortality Rate (World Population) per 100,000**  
**in Major Diagnosis Groups per Calendar Year**

SITE	YEAR					TOTAL ASMR (%)
	1999 ASMR (%)	2000 ASMR (%)	2001 ASMR (%)	2002 ASMR (%)	2003 ASMR (%)	
<b>MALES</b>						
Lip, oral cavity, and pharynx (C00-C14)	1.6 (2.9)	1.3 (2.3)	1.2 (1.9)	1.5 (2.5)	1.3 (2.2)	1.4 (2.4)
Digestive organs (C15-C26)	21.8 (40.8)	25.4 (44.2)	26.2 (43.9)	25.1 (41.9)	23.9 (40.6)	24.5 (42.3)
Respiratory organs (C30-C39)	3.6 (6.6)	5.6 (9.7)	6.1 (10.3)	7.1 (11.9)	6.2 (10.6)	5.8 (9.9)
Bone, cartilage, and skin (C40-C44)	0.0 (0.0)	0.1 (0.1)	0.1 (0.2)	0.0 (0.0)	0.0 (0.0)	0.0 (0.1)
Male genitalia (C60-C63)	7.2 (13.5)	6.8 (11.9)	6.8 (11.4)	6.4 (10.6)	7.3 (12.3)	6.9 (11.9)
Urinary organs (C64-C68)	0.5 (0.9)	0.9 (1.5)	1.0 (1.6)	1.5 (2.4)	0.8 (1.4)	0.9 (1.6)
Eye, brain, and thyroid (C69-C75)	2.1 (3.9)	2.5 (4.4)	2.6 (4.4)	2.5 (4.2)	3.4 (5.7)	2.6 (4.5)
Hematopoietic (C81-C96)	3.9 (7.2)	3.7 (6.4)	4.7 (7.8)	4.1 (6.9)	4.7 (8.0)	4.2 (7.3)
All sites	53.5 (100.0)	57.4 (100.0)	59.7 (100.0)	59.8 (100.0)	59.0 (100.0)	57.9 (100.0)
<b>FEMALES</b>						
Lip, oral cavity, and pharynx (C00-C14)	0.2 (0.3)	0.8 (1.1)	0.6 (0.8)	0.8 (1.1)	0.6 (0.9)	0.6 (0.9)
Digestive organs (C15-C26)	20.4 (32.3)	23.0 (34.6)	22.5 (33.3)	21.8 (32.4)	21.6 (32.5)	21.9 (33.0)
Respiratory organs (C30-C39)	2.9 (4.6)	3.7 (5.5)	4.0 (5.8)	3.3 (4.8)	3.9 (5.9)	3.5 (5.3)
Bone, cartilage, and skin (C40-C44)	0.0 (0.0)	0.1 (0.2)	0.0 (0.0)	0.0 (0.0)	0.0 (0.0)	0.0 (0.0)
Breast (C50)	4.4 (6.9)	3.7 (5.6)	4.0 (5.9)	4.2 (6.2)	4.2 (6.2)	4.1 (6.1)
Female genitalia (C51-C58)	17.3 (27.3)	17.5 (26.3)	17.9 (26.5)	17.4 (25.7)	15.7 (23.5)	17.1 (25.8)
Urinary organs (C64-C68)	0.7 (1.0)	0.4 (0.6)	0.8 (1.2)	0.9 (1.3)	0.7 (1.1)	0.7 (1.1)
Eye, brain, and thyroid (C69-C75)	1.9 (3.0)	2.4 (3.6)	2.2 (3.2)	2.2 (3.3)	2.7 (4.1)	2.3 (3.4)
Hematopoietic (C81-C96)	2.3 (3.6)	3.5 (5.2)	3.8 (5.7)	4.0 (5.9)	3.5 (5.3)	3.4 (5.2)
All sites	63.3 (100.0)	66.5 (100.0)	67.8 (100.0)	67.4 (100.0)	66.6 (100.0)	66.4 (100.0)
<b>BOTH SEXES</b>						
Lip, oral cavity, and pharynx (C00-C14)	0.8 (1.4)	1.0 (1.6)	0.8 (1.3)	1.1 (1.7)	0.9 (1.5)	0.9 (1.5)
Digestive organs (C15-C26)	21.0 (35.8)	24.0 (38.5)	24.1 (37.6)	23.3 (36.3)	22.6 (35.8)	23.0 (36.8)
Respiratory organs (C30-C39)	3.2 (5.4)	4.5 (7.2)	4.9 (7.7)	4.9 (7.7)	4.9 (7.8)	4.5 (7.2)
Bone, cartilage, and skin (C40-C44)	0.0 (0.0)	0.1 (0.1)	0.1 (0.1)	0.0 (0.0)	0.0 (0.0)	0.0 (0.0)
Urinary organs (C64-C68)	0.6 (1.0)	0.6 (1.0)	0.9 (1.4)	1.1 (1.7)	0.8 (1.2)	0.8 (1.3)
Eye, brain, and thyroid (C69-C75)	2.0 (3.4)	2.4 (3.9)	2.4 (3.7)	2.4 (3.7)	3.0 (4.8)	2.4 (3.9)
Hematopoietic (C81-C96)	3.0 (5.1)	3.6 (5.7)	4.3 (6.6)	4.0 (6.3)	4.1 (6.5)	3.8 (6.1)
All sites	58.8 (100.0)	62.3 (100.0)	64.1 (100.0)	64.0 (100.0)	63.2 (100.0)	62.5 (100.0)

**EL SALVADOR (1999-2003)**  
**Mortality per 100,000 by Age Group (years)**  
**Males**

SITE	ALL DEATHS	UNK AGE	0-4	5-9	10-14	15-19	20-24	25-29	30-34	35-39	40-44	45-49	50-54	55-59	60-64	65-69	70-74	75+	CRUDE RATE	ASMR (W)	CUM. RATE (0-74)†	Rank‡	ICD10
Lip, oral cavity, & pharynx (C00-14)	143	0	.	.	.	0.1	.	0.2	0.3	0.3	0.7	0.4	2.0	3.3	5.7	8.6	11.6	14.9	1.0	1.4	0.2	9	C00-14
Oesophagus (C15)	165	0	.	.	.	.	.	.	0.3	0.7	0.8	0.8	2.0	2.0	3.9	8.6	14.2	23.4	1.2	1.5	0.2	8	C15
Stomach (C16)	1265	0	0.1	0.1	.	0.1	0.5	1.5	1.9	4.0	5.7	11.0	19.8	27.4	38.7	60.3	89.7	152.0	8.8	11.8	1.3	1	C16
Colon (C18)	192	0	.	.	.	.	0.1	0.2	0.6	0.5	1.0	2.5	2.5	4.3	6.3	8.6	11.6	23.1	1.3	1.8	0.2		C18
Rectum (C19-C20)	0	0	.	.	.	.	.	.	.	.	.	.	.	.	.	.	.	.	0.0	0.0	0.0		C19-C20
Colorectal (C18-20)	0	0	.	.	.	.	.	.	.	.	.	.	.	.	.	.	.	.	0.0	0.0	0.0	23	C18-20
Rectum and anus (C19-21)	46	0	.	.	.	.	.	0.2	.	0.4	0.7	0.6	1.1	0.8	1.5	2.0	3.2	3.4	0.3	0.4	0.1		C19-21
Colon, rectum and anus (C18-21)	238	0	.	.	.	.	0.1	0.4	0.6	0.9	1.6	3.1	3.6	5.0	7.8	10.6	14.8	26.5	1.7	2.2	0.2		C18-21
Liver (C22)	399	0	0.1	.	.	0.3	0.2	0.8	0.6	0.8	3.0	3.8	5.4	9.6	13.8	26.6	24.3	37.7	2.8	3.8	0.4	4	C22
Gallbladder (C23-24)	104	0	0.1	.	.	.	.	0.1	.	0.3	0.2	0.8	1.1	2.0	4.2	4.3	9.5	13.2	0.7	1.0	0.1	10	C23-24
Pancreas (C25)	165	0	0.1	.	0.1	.	.	0.1	0.2	0.3	0.5	0.8	2.0	5.8	5.4	13.3	14.8	13.2	1.2	1.6	0.2	7	C25
Nose, sinuses (C30-31)	0	0	.	.	.	.	.	.	.	.	.	.	.	.	.	.	.	.	0.0	0.0	0.0	23	C30-31
Larynx (C32)	94	0	.	.	.	.	0.2	.	0.3	.	0.2	0.4	0.9	2.5	4.2	6.3	5.8	10.5	0.7	0.9	0.1	11	C32
Lung, trachea and bronchus (C33-34)	507	0	0.3	0.1	.	0.2	0.6	0.4	0.6	0.7	1.5	3.8	6.8	9.6	15.3	31.7	52.7	49.5	3.5	4.9	0.6	3	C33-34
Melanoma of skin (C43)	4	0	.	.	.	.	.	0.1	.	.	.	.	0.2	.	.	.	.	0.7	0.0	0.0	0.0	19	C43
Mesothelioma (C45)	2	0	.	.	.	.	.	.	.	.	.	.	.	.	.	0.4	.	0.3	0.0	0.0	0.0	20	C45
Kaposi sarcoma (C46)	0	0	.	.	.	.	.	.	.	.	.	.	.	.	.	.	.	.	0.0	0.0	0.0	23	C46
Breast (C50)	0	0	.	.	.	.	.	.	.	.	.	.	.	.	.	.	.	.	0.0	0.0	0.0	23	C50
Penis (C60)	0	0	.	.	.	.	.	.	.	.	.	.	.	.	.	.	.	.	0.0	0.0	0.0	23	C60
Prostate (C61)	811	0	.	.	.	.	.	0.1	.	0.5	0.3	0.8	2.9	5.3	12.3	34.5	67.0	173.0	5.7	6.8	0.6	2	C61
Testis (C62)	13	0	.	.	.	0.2	0.2	.	0.2	0.1	0.3	.	.	.	0.3	0.4	.	0.3	0.1	0.1	0.0	17	C62
Kidney (C64)	64	0	0.1	.	0.1	.	.	.	.	0.4	.	1.2	1.1	1.5	2.1	4.7	3.7	5.4	0.4	0.6	0.1	12	C64
Bladder (C67)	32	0	.	.	.	.	.	.	.	.	0.2	0.2	0.2	0.3	.	2.0	3.7	4.8	0.2	0.3	0.0	15	C67
Brain, CNS (C70-72)	276	0	0.7	0.6	0.3	0.6	1.2	1.2	2.0	2.3	1.1	2.3	3.2	4.5	6.6	12.1	13.7	14.6	1.9	2.4	0.3	6	C70-72
Thyroid (C73)	21	0	0.1	.	.	.	.	.	.	.	0.5	0.4	0.2	0.8	1.5	.	1.1	1.4	0.1	0.2	0.0	16	C73
Hodgkin disease (C81)	59	0	.	0.2	0.2	0.2	0.2	0.4	0.3	0.9	0.5	0.2	0.2	1.8	1.2	1.2	3.2	2.4	0.4	0.5	0.1	14	C81
Non-Hodgkin lymphoma (C82-85,C96)	60	0	.	0.1	0.1	0.1	0.2	0.2	0.5	0.9	0.3	0.4	0.2	2.0	1.8	0.8	2.1	4.8	0.4	0.5	0.0	13	C82-85,C96
Multiple myeloma (C88+C90)	4	0	.	.	.	.	.	.	.	.	.	.	0.2	.	.	0.4	0.5	0.3	0.0	0.0	0.0	18	C88+C90
Lymphoid leukaemia (C91)	0	0	.	.	.	.	.	.	.	.	.	.	.	.	.	.	.	.	0.0	0.0	0.0		C91
Myeloid leukaemia (C92-94)	0	0	.	.	.	.	.	.	.	.	.	.	.	.	.	.	.	.	0.0	0.0	0.0		C92-94
Leukaemia unspecified (C95)	0	0	.	.	.	.	.	.	.	.	.	.	.	.	.	.	.	.	0.0	0.0	0.0		C95
Leukaemia (C91-95)	403	0	1.7	1.3	1.5	2.2	1.9	3.1	3.6	2.4	2.5	3.1	2.7	6.0	8.7	6.7	10.5	13.9	2.8	3.2	0.3	5	C91-95
All cancers but lung (C00-97/C33-34)	5857	0	4.2	2.6	3.0	5.4	7.4	11.0	16.3	21.3	25.1	41.3	68.5	107.9	162.8	275.7	397.7	668.7	40.8	53.1	5.8		C00-97/C33-34
All sites (ALL)	6364	0	4.5	2.6	3.0	5.6	8.0	11.4	16.9	22.0	26.6	45.2	75.3	117.4	178.0	307.4	450.4	718.3	44.4	57.9	6.4		ALL

UNK, Unknown; ASMR (W), Age Standardized Mortality Rate (World Population); CUM., Cumulative

†Percent

‡Rank based on highest ASMR excluding: All sites but lung and All sites

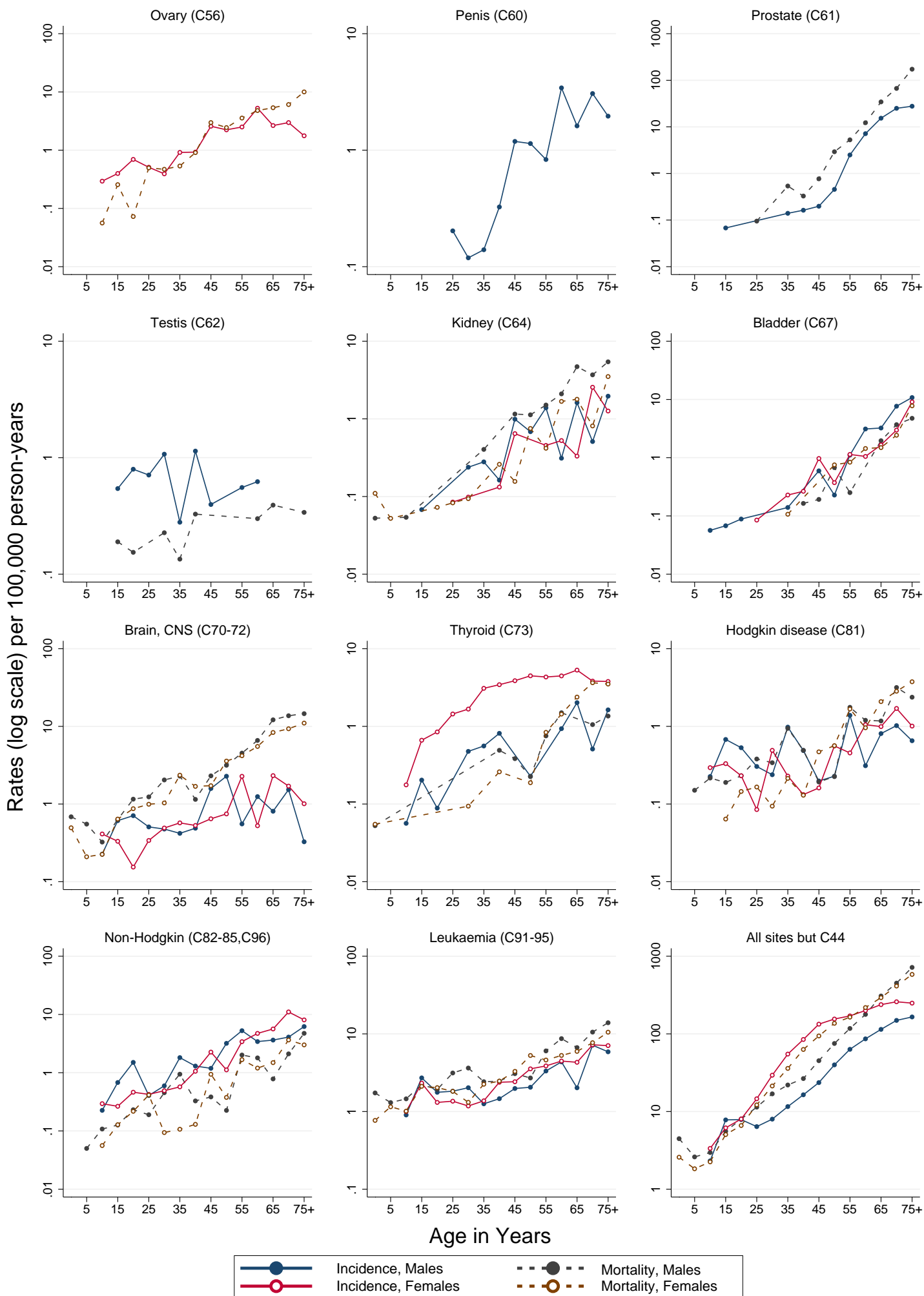
**EL SALVADOR (1999-2003)**  
**Mortality per 100,000 by Age Group (years)**  
**Females**

SITE	ALL DEATHS	UNK AGE	0-4	5-9	10-14	15-19	20-24	25-29	30-34	35-39	40-44	45-49	50-54	55-59	60-64	65-69	70-74	75+	CRUDE RATE	ASMR (W)	CUM. RATE (0-74)†	Rank‡	ICD10
Lip, oral cavity, & pharynx (C00-14)	83	0	.	.	.	.	.	0.1	.	0.1	0.5	0.6	0.6	1.0	1.4	2.7	6.1	8.8	0.5	0.6	0.1	13	C00-14
Oesophagus (C15)	86	0	.	.	.	.	.	.	.	.	0.3	0.5	0.9	1.7	2.2	3.9	3.2	9.5	0.6	0.6	0.1	12	C15
Stomach (C16)	1176	0	.	.	0.1	0.1	0.6	1.0	2.2	3.6	5.6	9.6	13.9	18.6	25.0	44.1	69.3	101.4	7.6	8.6	1.0	2	C16
Colon (C18)	280	0	0.1	.	.	0.1	0.3	0.2	0.8	0.6	1.2	1.9	5.8	4.2	6.5	10.4	16.2	21.0	1.8	2.1	0.2		C18
Rectum (C19-C20)	0	0	.	.	.	.	.	.	.	.	.	.	.	.	.	.	.	.	0.0	0.0	0.0		C19-C20
Colorectal (C18-20)	0	0	.	.	.	.	.	.	.	.	.	.	.	.	.	.	.	.	0.0	0.0	0.0	24	C18-20
Rectum and anus (C19-21)	48	0	.	.	.	.	0.1	0.2	0.4	0.2	0.3	0.3	0.2	0.6	1.9	0.9	2.0	3.8	0.3	0.3	0.0		C19-21
Colon, rectum and anus (C18-21)	328	0	0.1	.	.	0.1	0.4	0.3	1.1	0.9	1.4	2.2	6.0	4.8	8.4	11.3	18.2	24.8	2.1	2.4	0.3		C18-21
Liver (C22)	540	0	0.1	0.1	.	0.1	0.1	0.3	0.8	1.0	2.1	4.2	6.6	11.3	11.8	22.6	30.4	45.1	3.5	4.0	0.5	4	C22
Gallbladder (C23-24)	288	0	0.1	.	.	.	.	.	.	0.3	0.8	2.0	3.6	5.7	9.6	8.6	16.6	27.3	1.9	2.1	0.2	7	C23-24
Pancreas (C25)	221	0	.	.	.	.	0.1	0.2	0.1	0.1	0.6	1.7	2.8	2.5	5.0	11.6	13.8	19.5	1.4	1.6	0.2	9	C25
Nose, sinuses (C30-31)	0	0	.	.	.	.	.	.	.	.	.	.	.	.	.	.	.	.	0.0	0.0	0.0	24	C30-31
Larynx (C32)	25	0	.	.	0.1	.	0.1	.	.	.	.	.	0.2	0.6	1.0	1.5	1.6	1.5	0.2	0.2	0.0	19	C32
Lung, trachea and bronchus (C33-34)	457	0	0.1	0.1	.	0.2	0.3	0.7	0.7	1.0	2.2	3.1	5.3	8.4	10.8	14.9	30.4	36.8	3.0	3.4	0.4	5	C33-34
Melanoma of skin (C43)	4	0	.	.	.	.	.	.	.	.	0.1	.	.	.	.	.	0.4	0.5	0.0	0.0	0.0	20	C43
Mesothelioma (C45)	1	0	.	.	.	.	.	.	.	.	.	.	.	.	.	.	.	.	0.0	0.0	0.0	21	C45
Kaposi sarcoma (C46)	0	0	.	.	.	.	.	.	.	.	.	.	.	.	.	.	.	.	0.0	0.0	0.0	24	C46
Breast (C50)	512	0	.	.	.	0.1	.	0.4	1.4	2.4	7.4	10.8	12.6	10.7	14.4	14.0	9.7	23.5	3.3	4.1	0.4	3	C50
Cervix uteri (C53)	1847	0	.	.	.	0.1	0.7	2.4	6.5	12.8	21.3	29.9	37.3	37.7	49.4	53.9	68.1	82.7	11.9	14.5	1.6	1	C53
Corpus uteri (C54)	176	0	.	.	.	.	.	0.1	.	0.1	0.9	0.6	3.6	4.8	6.0	8.0	8.5	12.0	1.1	1.4	0.2	10	C54
Ovary (C56)	171	0	.	.	0.1	0.3	0.1	0.5	0.5	0.5	0.9	3.0	2.4	3.6	4.8	5.4	6.1	10.0	1.1	1.3	0.1	11	C56
Kidney (C64)	44	0	0.1	0.1	.	.	0.1	0.1	0.1	.	0.3	0.2	0.8	0.4	1.7	1.8	0.8	3.5	0.3	0.3	0.0	18	C64
Bladder (C67)	57	0	.	.	.	.	.	.	.	0.1	.	.	0.8	0.8	1.4	1.5	2.4	7.8	0.4	0.4	0.0	16	C67
Brain, CNS (C70-72)	265	0	0.5	0.2	0.2	0.6	0.9	1.0	1.0	2.4	1.7	1.7	3.6	4.2	5.5	8.3	9.3	11.0	1.7	1.9	0.2	8	C70-72
Thyroid (C73)	46	0	0.1	.	.	.	.	.	0.1	.	0.3	.	0.2	0.8	1.4	2.4	3.6	3.5	0.3	0.3	0.0	17	C73
Hodgkin disease (C81)	56	0	.	.	.	0.1	0.1	0.2	0.1	0.2	0.1	0.5	0.6	1.7	1.0	2.1	2.8	3.8	0.4	0.4	0.0	15	C81
Non-Hodgkin lymphoma (C82-85,C96)	61	0	.	.	0.1	0.1	0.2	0.4	0.1	0.1	0.1	0.9	0.4	1.7	1.2	1.5	3.6	3.0	0.4	0.5	0.1	14	C82-85,C96
Multiple myeloma (C88+C90)	0	0	.	.	.	.	.	.	.	.	.	.	.	.	.	.	.	.	0.0	0.0	0.0	24	C88+C90
Lymphoid leukaemia (C91)	0	0	.	.	.	.	.	.	.	.	.	.	.	.	.	.	.	.	0.0	0.0	0.0		C91
Myeloid leukaemia (C92-94)	0	0	.	.	.	.	.	.	.	.	.	.	.	.	.	.	.	.	0.0	0.0	0.0		C92-94
Leukaemia unspecified (C95)	0	0	.	.	.	.	.	.	.	.	.	.	.	.	.	.	.	.	0.0	0.0	0.0		C95
Leukaemia (C91-95)	365	0	0.8	1.2	1.0	2.1	2.0	1.8	1.3	2.2	2.5	3.3	5.3	4.6	5.3	6.0	7.7	10.5	2.4	2.6	0.2	6	C91-95
All cancers but lung (C00-97/C33-34)	8383	0	2.5	1.8	2.2	4.9	6.3	11.4	20.7	35.0	60.8	91.0	131.6	156.0	207.3	278.0	382.7	546.5	54.2	63.0	7.0		C00-97/C33-34
All sites (ALL)	8840	0	2.6	1.8	2.2	5.1	6.6	12.2	21.3	35.9	63.0	94.1	136.8	164.4	218.1	292.9	413.1	583.3	57.1	66.4	7.4		ALL

UNK, Unknown; ASMR (W), Age Standardized Mortality Rate (World Population); CUM., Cumulative  
†Percent  
‡Rank based on highest ASMR excluding: All sites but lung and All sites

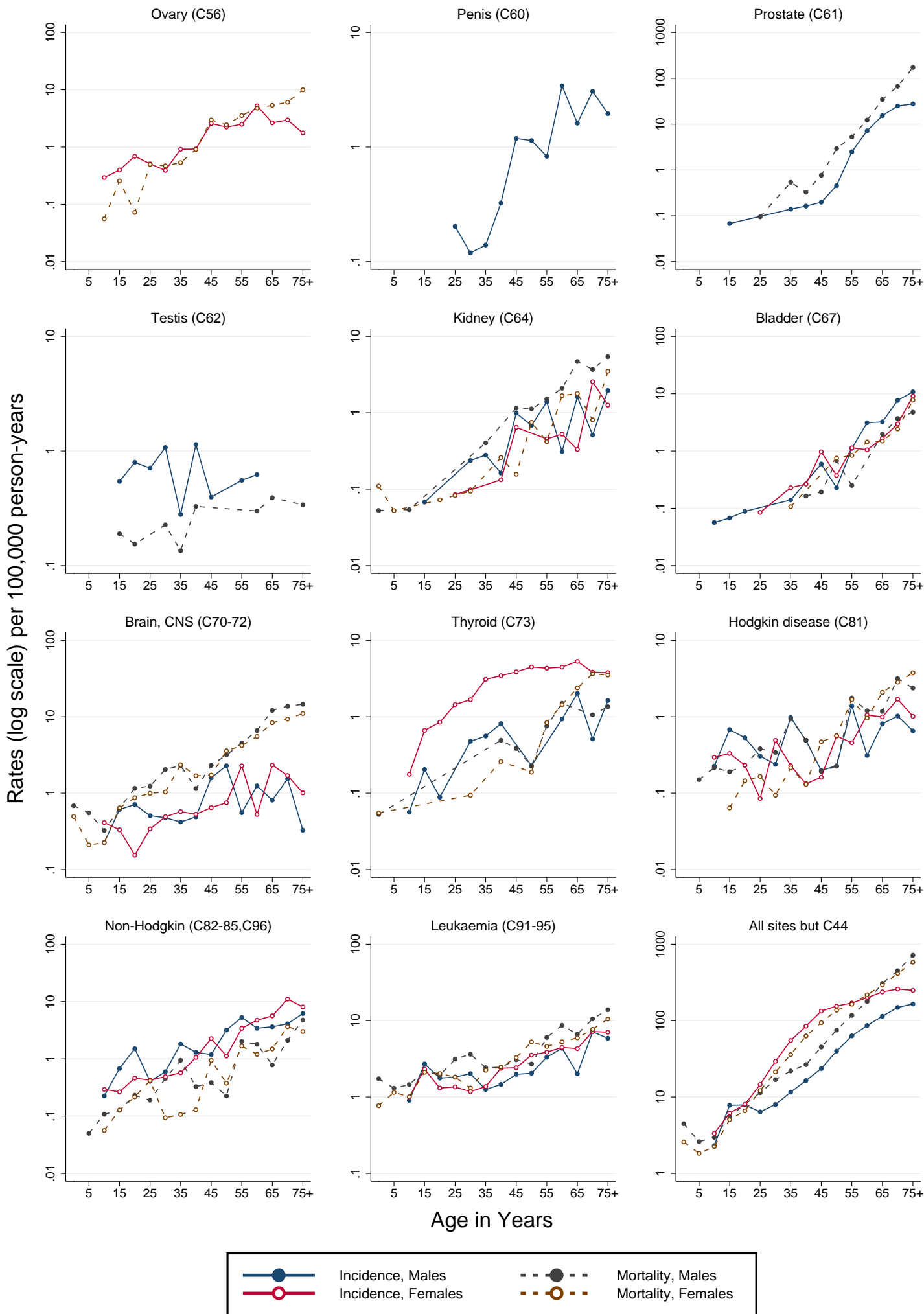
# EL SALVADOR (1999-2003)

Age-specific incidence and mortality rates per 100,000 person-years

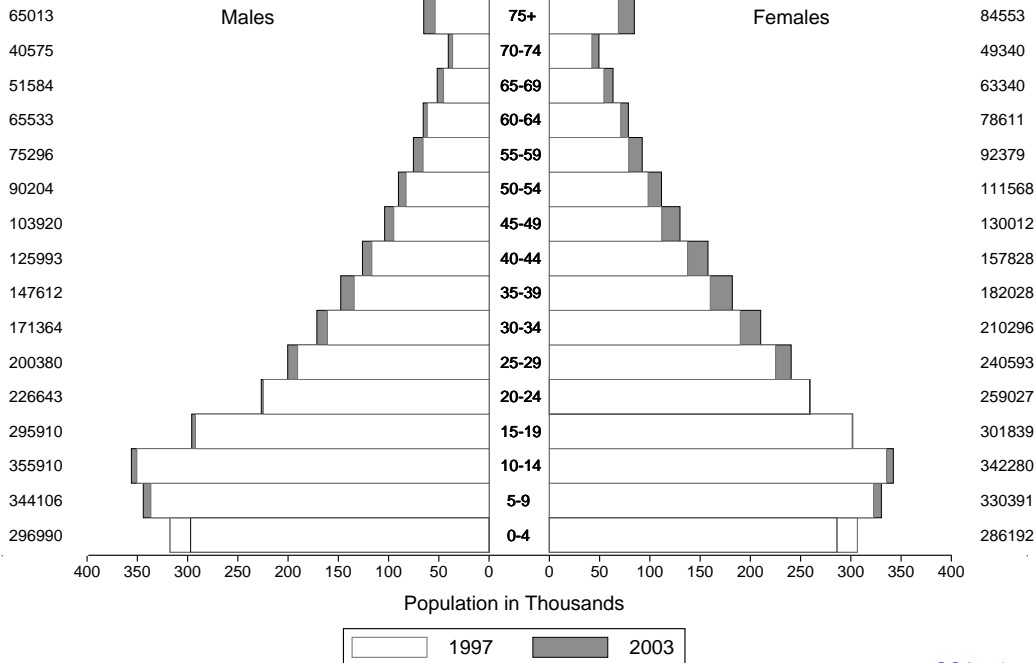


# EL SALVADOR (1999-2003)

## Age-specific incidence and mortality rates per 100,000 person-years



EL SALVADOR (1997-2003)  
Average annual person-years



Note: Population values shown for year 2003