

## Cancer in Central and South America

### FRENCH GUYANA

This country profile for the Cancer in Central and South America project provides, for each participating cancer registry tables and graphics showing numbers of cases and rates by year, sex and age group for major sites of cancer together with a population pyramid. A country summary is also provided based on aggregated registry data and national mortality data from the WHO mortality database:

([http://www.who.int/healthinfo/statistics/mortality\\_rawdata/en/index.html](http://www.who.int/healthinfo/statistics/mortality_rawdata/en/index.html))

Citation of any of these data should be in the following format:

“Sierra MS, Abriata MG, Barrios E, Bravo LE, Cueva P, Fernandez L, Pineros M, Rebelo M, de Vries E, Forman D. Editors on behalf of the Cancer in Central and South America Working Group (2016). Cancer in Central and South America. Lyon: International Agency for Research on Cancer. Available from: [http://www-dep.iarc.fr/CSU\\_resources.htm](http://www-dep.iarc.fr/CSU_resources.htm) accessed [date].”

**Country's Summary Tables and Figures**

**FRENCH GUYANA<sup>1,2</sup>**  
**(2003-2007)**

<sup>1</sup> Country's incidence rates were estimated using data from the population-based cancer registry of French Guyana

<sup>2</sup> No National mortality data available

## Registry Summary Tables and Figures

# FRENCH GUYANA (2003-2007)

Registry Director\*: Dr Juliette Plenet

Registry Staff\*: Tristan Roue, Sophie Belliaro

\*Director and staff as notified at time of call for data in 2013. Current contact information for cancer registries in the region can be found at: [http://www.iacr.com.fr/index.php?option=com\\_comprofiler&task=usersList&listid=5](http://www.iacr.com.fr/index.php?option=com_comprofiler&task=usersList&listid=5).

**FRENCH GUYANA (2003-2007)**  
**Number of Cases in Major Diagnosis Groups**  
**per Calendar Year**

SITE	YEAR					TOTAL n (%)
	2003 n (%)	2004 n (%)	2005 n (%)	2006 n (%)	2007 n (%)	
<b>MALES</b>						
Lip, oral cavity, and pharynx (C00-C14)	10 (5.6)	13 (6.7)	12 (5.8)	10 (4.9)	12 (5.4)	57 (5.7)
Digestive organs (C15-C26)	34 (19.2)	44 (22.7)	28 (13.5)	32 (15.7)	42 (18.8)	180 (17.9)
Respiratory organs (C30-C39)	21 (11.9)	13 (6.7)	17 (8.2)	16 (7.8)	22 (9.8)	89 (8.8)
Bone, cartilage, and skin (C40-C44)	8 (4.5)	14 (7.2)	13 (6.3)	4 (2.0)	8 (3.6)	47 (4.7)
Breast (C50)	0 (0.0)	0 (0.0)	1 (0.5)	0 (0.0)	0 (0.0)	1 (0.1)
Male genitalia (C60-C63)	70 (39.5)	80 (41.2)	83 (40.1)	107 (52.5)	91 (40.6)	431 (42.8)
Urinary organs (C64-C68)	9 (5.1)	9 (4.6)	14 (6.8)	15 (7.4)	11 (4.9)	58 (5.8)
Eye, brain, and thyroid (C69-C75)	5 (2.8)	6 (3.1)	7 (3.4)	4 (2.0)	11 (4.9)	33 (3.3)
Hematopoietic (C81-C96)	16 (9.0)	12 (6.2)	21 (10.1)	20 (9.8)	21 (9.4)	90 (8.9)
Other and unspecified	9 (5.1)	7 (3.6)	13 (6.3)	3 (1.5)	7 (3.1)	39 (3.9)
All sites	177 (100.0)	194 (100.0)	207 (100.0)	204 (100.0)	224 (100.0)	1006 (100.0)
<b>FEMALES</b>						
Lip, oral cavity, and pharynx (C00-C14)	2 (1.6)	2 (1.5)	3 (2.0)	3 (2.0)	5 (3.1)	15 (2.1)
Digestive organs (C15-C26)	26 (20.6)	17 (12.7)	25 (16.9)	26 (17.1)	37 (23.0)	131 (18.2)
Respiratory organs (C30-C39)	5 (4.0)	6 (4.5)	7 (4.7)	6 (3.9)	5 (3.1)	29 (4.0)
Bone, cartilage, and skin (C40-C44)	3 (2.4)	7 (5.2)	4 (2.7)	4 (2.6)	9 (5.6)	27 (3.7)
Breast (C50)	31 (24.6)	37 (27.6)	41 (27.7)	40 (26.3)	38 (23.6)	187 (25.9)
Female genitalia (C51-C58)	31 (24.6)	35 (26.1)	44 (29.7)	42 (27.6)	36 (22.4)	188 (26.1)
Urinary organs (C64-C68)	2 (1.6)	7 (5.2)	5 (3.4)	3 (2.0)	6 (3.7)	23 (3.2)
Eye, brain, and thyroid (C69-C75)	5 (4.0)	7 (5.2)	7 (4.7)	9 (5.9)	10 (6.2)	38 (5.3)
Hematopoietic (C81-C96)	15 (11.9)	8 (6.0)	8 (5.4)	17 (11.2)	14 (8.7)	62 (8.6)
Other and unspecified	6 (4.8)	8 (6.0)	4 (2.7)	3 (2.0)	1 (0.6)	22 (3.1)
All sites	126 (100.0)	134 (100.0)	148 (100.0)	152 (100.0)	161 (100.0)	721 (100.0)
<b>BOTH SEXES</b>						
Lip, oral cavity, and pharynx (C00-C14)	12 (4.0)	15 (4.6)	15 (4.2)	13 (3.7)	17 (4.4)	72 (4.2)
Digestive organs (C15-C26)	60 (19.8)	61 (18.6)	53 (14.9)	58 (16.3)	79 (20.5)	311 (18.0)
Respiratory organs (C30-C39)	26 (8.6)	19 (5.8)	24 (6.8)	22 (6.2)	27 (7.0)	118 (6.8)
Bone, cartilage, and skin (C40-C44)	11 (3.6)	21 (6.4)	17 (4.8)	8 (2.2)	17 (4.4)	74 (4.3)
Urinary organs (C64-C68)	11 (3.6)	16 (4.9)	19 (5.4)	18 (5.1)	17 (4.4)	81 (4.7)
Eye, brain, and thyroid (C69-C75)	10 (3.3)	13 (4.0)	14 (3.9)	13 (3.7)	21 (5.5)	71 (4.1)
Hematopoietic (C81-C96)	31 (10.2)	20 (6.1)	29 (8.2)	37 (10.4)	35 (9.1)	152 (8.8)
Other and unspecified	15 (5.0)	15 (4.6)	17 (4.8)	6 (1.7)	8 (2.1)	61 (3.5)
All sites	303 (100.0)	328 (100.0)	355 (100.0)	356 (100.0)	385 (100.0)	1727 (100.0)

**FRENCH GUYANA (2003-2007)**  
**Age Standardized Incidence Rate (World Population) per 100,000**  
**in Major Diagnosis Groups per Calendar Year**

SITE	YEAR					TOTAL ASR (%)
	2003 ASR (%)	2004 ASR (%)	2005 ASR (%)	2006 ASR (%)	2007 ASR (%)	
<b>MALES</b>						
Lip, oral cavity, and pharynx (C00-C14)	16.4 (5.2)	20.6 (6.4)	14.8 (4.7)	15.3 (4.9)	17.6 (5.5)	16.9 (5.4)
Digestive organs (C15-C26)	61.0 (19.3)	74.3 (23.1)	39.2 (12.4)	46.3 (14.8)	56.6 (17.9)	55.2 (17.5)
Respiratory organs (C30-C39)	36.5 (11.5)	20.6 (6.4)	26.0 (8.2)	25.0 (8.0)	27.9 (8.8)	26.8 (8.5)
Bone, cartilage, and skin (C40-C44)	12.7 (4.0)	20.5 (6.4)	17.5 (5.6)	4.6 (1.5)	11.3 (3.6)	13.1 (4.2)
Breast (C50)	0 (0.0)	0 (0.0)	1.9 (0.6)	0 (0.0)	0 (0.0)	0.4 (0.1)
Male genitalia (C60-C63)	138.5 (43.7)	142.1 (44.3)	146.2 (46.4)	176.8 (56.5)	146.6 (46.2)	150.1 (47.5)
Urinary organs (C64-C68)	17.0 (5.4)	16.6 (5.2)	19.3 (6.1)	23.1 (7.4)	15.0 (4.7)	18.1 (5.7)
Eye, brain, and thyroid (C69-C75)	9.5 (3.0)	7.3 (2.3)	6.8 (2.2)	5.9 (1.9)	12.5 (4.0)	8.5 (2.7)
Hematopoietic (C81-C96)	18.9 (6.0)	14.9 (4.6)	28.3 (9.0)	25.0 (8.0)	22.2 (7.0)	22.1 (7.0)
Other and unspecified	14.6 (4.6)	11.7 (3.6)	17.5 (5.6)	2.5 (0.8)	8.6 (2.7)	10.7 (3.4)
All sites	316.7 (100.0)	321.0 (100.0)	314.9 (100.0)	312.9 (100.0)	317.3 (100.0)	315.7 (100.0)
<b>FEMALES</b>						
Lip, oral cavity, and pharynx (C00-C14)	2.5 (1.4)	2.1 (1.1)	4.1 (2.1)	4.0 (1.9)	8.1 (4.0)	4.2 (2.2)
Digestive organs (C15-C26)	39.4 (22.3)	24.4 (13.2)	35.6 (18.0)	36.3 (17.4)	45.1 (22.1)	36.1 (18.5)
Respiratory organs (C30-C39)	9.4 (5.3)	7.9 (4.3)	8.1 (4.1)	10.8 (5.2)	6.5 (3.2)	8.4 (4.3)
Bone, cartilage, and skin (C40-C44)	5.2 (3.0)	9.5 (5.1)	4.1 (2.1)	8.2 (3.9)	10.6 (5.2)	7.6 (3.9)
Breast (C50)	40.9 (23.1)	47.0 (25.4)	50.8 (25.7)	53.9 (25.8)	44.6 (21.8)	47.8 (24.5)
Female genitalia (C51-C58)	42.3 (23.9)	47.4 (25.6)	63.4 (32.1)	58.6 (28.1)	47.8 (23.4)	52.0 (26.7)
Urinary organs (C64-C68)	4.8 (2.7)	11.6 (6.3)	6.5 (3.3)	2.7 (1.3)	9.0 (4.4)	6.9 (3.6)
Eye, brain, and thyroid (C69-C75)	5.1 (2.9)	11.9 (6.4)	8.1 (4.1)	10.5 (5.0)	10.9 (5.3)	9.3 (4.8)
Hematopoietic (C81-C96)	18.8 (10.7)	9.8 (5.3)	9.8 (5.0)	22.1 (10.6)	20.3 (10.0)	16.3 (8.4)
Other and unspecified	8.6 (4.8)	13.5 (7.3)	6.9 (3.5)	2.9 (1.4)	1.1 (0.5)	6.3 (3.2)
All sites	176.9 (100.0)	185.1 (100.0)	197.4 (100.0)	208.9 (100.0)	204.1 (100.0)	194.8 (100.0)
<b>BOTH SEXES</b>						
Lip, oral cavity, and pharynx (C00-C14)	9.7 (3.9)	11.4 (4.5)	9.6 (3.8)	9.6 (3.8)	12.9 (5.0)	10.7 (4.2)
Digestive organs (C15-C26)	50.0 (20.3)	49.4 (19.7)	37.1 (14.6)	41.5 (16.2)	51.7 (20.1)	45.8 (18.1)
Respiratory organs (C30-C39)	23.5 (9.5)	14.2 (5.7)	17.1 (6.7)	17.2 (6.7)	17.0 (6.6)	17.6 (7.0)
Bone, cartilage, and skin (C40-C44)	9.1 (3.7)	15.1 (6.0)	10.7 (4.2)	6.4 (2.5)	10.7 (4.1)	10.3 (4.1)
Urinary organs (C64-C68)	10.4 (4.2)	13.9 (5.5)	13.2 (5.2)	12.5 (4.9)	11.7 (4.5)	12.3 (4.9)
Eye, brain, and thyroid (C69-C75)	7.4 (3.0)	9.7 (3.9)	7.5 (3.0)	8.3 (3.2)	11.7 (4.6)	9.0 (3.5)
Hematopoietic (C81-C96)	19.0 (7.7)	12.7 (5.1)	19.1 (7.5)	23.4 (9.1)	21.7 (8.4)	19.3 (7.6)
Other and unspecified	11.9 (4.8)	12.4 (4.9)	12.2 (4.8)	2.7 (1.0)	4.4 (1.7)	8.4 (3.3)
All sites	246.4 (100.0)	251.3 (100.0)	254.7 (100.0)	256.4 (100.0)	257.1 (100.0)	253.0 (100.0)

**FRENCH GUYANA (2003-2007)**  
**Incidence per 100,000 by Age Group (years)**  
**Males**

SITE	ALL CASES	UNK AGE	0-4	5-9	10-14	15-19	20-24	25-29	30-34	35-39	40-44	45-49	50-54	55-59	60-64	65-69	70-74	75+	CRUDE RATE	ASR (W)	CUM. RATE (0-74)†	MV (%)	DCO (%)	Rank‡	ICD10
Lip, oral cavity, and pharynx (C00-14)	57	0	.	.	.	.	.	2.8	5.5	15.0	32.6	35.1	52.9	39.3	149.9	150.2	30.4	11.5	16.9	2.42	91	0	3	C00-14	
Oesophagus (C15)	20	0	.	.	.	.	.	.	.	.	7.2	13.2	5.9	29.5	30.0	107.3	60.8	4.0	6.8	0.97	100	0	8	C15	
Stomach (C16)	53	0	.	.	.	.	.	.	.	9.0	30.7	52.9	68.8	75.0	171.7	212.9	10.7	16.9	2.04	100	0	4	C16		
Colon (C18)	35	0	.	.	.	.	3.0	.	2.7	3.0	7.2	22.0	35.2	68.8	45.0	85.9	76.0	7.1	10.9	1.36	94	0		C18	
Rectum (C19-20)	17	0	.	.	.	.	.	.	8.2	.	3.6	4.4	29.4	9.8	30.0	42.9	30.4	3.4	4.9	0.64	94	0		C19-20	
Colorectal (C18-20)	52	0	.	.	.	.	3.0	.	10.9	3.0	10.9	26.3	64.6	78.6	75.0	128.8	106.4	10.5	15.7	2.01	94	0	5	C18-20	
Anus (C21)	4	0	.	.	.	.	.	.	.	.	3.6	.	11.7	.	15.0	.	.	0.8	1.1	0.15	100	0	24	C21	
Colon, rectum and anus (C18-21)	56	0	.	.	.	.	3.0	.	10.9	3.0	14.5	26.3	76.3	78.6	90.0	128.8	106.4	11.3	16.9	2.16	95	0		C18-21	
Liver (C22)	24	0	.	.	.	2.9	.	.	2.7	9.0	18.1	30.7	.	19.7	45.0	.	30.4	4.8	6.3	0.64	38	0	9	C22	
Gallbladder (C23-24)	5	0	.	.	.	.	.	.	.	.	.	.	5.9	19.7	30.0	.	.	1.0	1.9	0.28	100	0	19	C23-24	
Pancreas (C25)	16	0	.	.	.	.	.	.	2.7	9.0	7.2	4.4	5.9	19.7	30.0	42.9	30.4	3.2	4.7	0.61	56	0	13	C25	
Nose, sinuses (C30-31)	3	0	.	.	.	.	.	2.8	.	3.0	.	.	5.9	.	.	.	.	0.6	0.6	0.06	67	0	26	C30-31	
Larynx (C32)	13	0	.	.	.	.	.	.	2.7	.	.	8.8	5.9	9.8	45.0	42.9	45.6	2.6	4.4	0.58	100	0	15	C32	
Lung, trachea and bronchus (C33-34)	70	0	.	.	.	.	.	2.8	2.7	9.0	21.7	52.7	58.7	127.8	75.0	171.7	167.2	14.1	21.3	2.61	77	0	2	C33-34	
Melanoma of skin (C43)	13	0	.	.	.	.	.	2.8	2.7	3.0	3.6	.	11.7	29.5	15.0	21.5	30.4	2.6	3.9	0.45	100	0	16	C43	
Mesothelioma (C45)	4	0	.	.	.	.	.	.	.	.	.	.	5.9	9.8	.	42.9	.	0.8	1.5	0.29	100	0	22	C45	
Kaposi sarcoma (C46)	6	0	1.5	.	.	.	.	.	2.7	.	3.6	.	.	9.8	.	30.4	.	1.2	1.6	0.09	83	0	21	C46	
Breast (C50)	1	0	.	.	.	.	.	.	.	.	.	.	.	9.8	.	.	.	0.2	0.4	0.05	100	0	27	C50	
Penis (C60)	7	0	.	.	.	.	3.0	.	2.7	3.0	3.6	.	.	15.0	15.0	21.5	15.2	1.4	2.0	0.24	100	0	18	C60	
Prostate (C61)	419	0	.	.	.	.	.	.	.	3.0	25.3	101.0	311.2	668.2	1214.4	1395.1	1839.7	84.6	147.1	18.59	79	0	1	C61	
Testis (C62)	5	0	.	.	.	.	3.0	2.8	2.7	.	.	4.4	5.9	.	.	.	.	1.0	1.0	0.09	100	0	25	C62	
Kidney (C64)	12	0	1.5	.	.	4.4	.	.	2.7	6.0	.	.	11.7	29.5	.	15.2	2.4	3.1	0.28	92	0	17	C64		
Bladder (C67)	25	0	.	.	.	.	.	.	.	3.0	3.6	8.8	23.5	19.7	75.0	85.9	91.2	5.0	8.4	1.10	100	0	7	C67	
Brain, CNS (C70-72)	18	0	1.5	.	.	2.2	2.9	.	2.8	2.7	14.5	8.8	11.7	19.7	30.0	21.5	.	3.6	4.8	0.59	89	0	12	C70-72	
Thyroid (C73)	6	0	.	.	.	.	6.0	.	2.7	3.0	.	.	5.9	9.8	.	.	.	1.2	1.4	0.14	67	0	23	C73	
Hodgkin disease (C81)	8	0	.	1.7	1.9	2.2	.	.	.	3.0	7.2	4.4	.	15.0	.	.	.	1.6	1.8	0.18	88	0	20	C81	
Non-Hodgkin lymphoma (C82-85,C96)	38	0	.	1.7	3.7	.	.	2.8	16.4	18.0	3.6	26.3	23.5	49.1	15.0	64.4	30.4	7.7	9.5	1.12	84	0	6	C82-85,C96	
Multiple myeloma (C88-C90)	16	0	.	.	.	.	.	.	.	.	3.6	8.8	41.1	19.7	45.0	.	15.2	3.2	4.7	0.59	88	0	14	C88-C90	
Lymphoid leukaemia (C91)	13	0	6.0	1.7	.	2.2	5.7	3.0	.	2.7	6.0	3.6	.	.	.	.	.	2.6	2.5	0.15	92	0		C91	
Myeloid leukaemia (C92-94)	14	0	1.5	1.7	.	6.6	5.7	.	.	.	.	.	4.4	11.7	.	21.5	30.4	2.8	3.3	0.28	100	0		C92-94	
Leukaemia unspecified (C95)	1	0	1.5	.	.	.	.	.	.	.	.	.	.	.	.	.	.	0.2	0.2	0.01	100	0		C95	
Leukaemia (C91-95)	28	0	9.0	3.4	.	8.8	11.4	3.0	.	5.5	6.0	3.6	4.4	11.7	.	21.5	30.4	5.7	6.0	0.44	96	0	10	C91-95	
Other and unspecified (O&U)	17	0	.	.	.	.	3.0	.	.	3.0	3.6	17.6	11.7	19.7	15.0	42.9	45.6	3.4	5.0	0.58	71	0	11	O&U	
All sites but C44 (ALLbC44)	976	0	19.6	10.1	7.5	19.7	17.1	23.8	22.2	73.7	119.7	177.4	421.6	775.1	1316.8	2024.0	2575.7	197.0	307.1	38.02	84	0		ALLbC44	
All sites (ALL)	1006	0	21.1	10.1	7.5	19.7	17.1	23.8	22.2	76.4	125.7	195.5	430.4	816.3	1336.5	2084.0	2618.6	203.1	315.7	39.02	84	0		ALL	

UNK, Unknown; ASR (W), Age Standardized Rate (World Population); CUM., Cumulative; MV, Microscopic Verification; DCO, Death Certificate Only

†Percent

‡Rank based on highest ASR excluding: All sites but C44 and All sites

**FRENCH GUYANA (2003-2007)**  
**Incidence per 100,000 by Age Group (years)**  
**Females**

SITE	ALL CASES	UNK AGE	0-4	5-9	10-14	15-19	20-24	25-29	30-34	35-39	40-44	45-49	50-54	55-59	60-64	65-69	70-74	75+	CRUDE RATE	ASR (W)	CUM. RATE (0-74)†	MV (%)	DCO (%)	Rank‡	ICD10
Lip, oral cavity, and pharynx (C00-14)	15	0	.	.	3.8	.	2.6	.	.	2.6	3.0	7.5	9.5	.	11.1	30.6	40.9	10.8	3.0	4.2	0.56	100	0	12	C00-14
Oesophagus (C15)	4	0	.	.	.	.	.	.	.	2.6	.	.	9.5	.	11.1	.	.	.	0.8	1.1	0.12	100	0	22	C15
Stomach (C16)	32	0	.	.	.	.	.	.	.	2.6	12.0	11.3	9.5	33.6	22.3	91.8	.	96.9	6.4	9.0	0.92	94	0	5	C16
Colon (C18)	48	0	.	.	.	.	5.2	.	4.8	2.6	3.0	15.1	19.0	40.3	55.7	30.6	102.2	172.3	9.6	13.1	1.39	100	0		C18
Rectum (C19-20)	14	0	.	.	.	.	.	2.4	.	2.4	6.0	3.8	14.3	13.4	11.1	.	40.9	21.5	2.8	3.7	0.46	100	0		C19-20
Colorectal (C18-20)	62	0	.	.	.	.	5.2	.	7.2	2.6	9.0	18.9	33.3	53.8	66.8	30.6	143.1	193.9	12.4	16.8	1.85	100	0	3	C18-20
Anus (C21)	6	0	.	.	.	.	.	.	.	.	.	7.5	.	6.7	.	.	40.9	10.8	1.2	1.8	0.28	100	0	20	C21
Colon, rectum and anus (C18-21)	68	0	.	.	.	.	5.2	.	7.2	2.6	9.0	26.4	33.3	60.5	66.8	30.6	183.9	204.7	13.6	18.6	2.13	100	0		C18-21
Liver (C22)	11	0	.	.	.	.	.	2.4	.	.	.	3.8	14.3	13.4	.	15.3	20.4	21.5	2.2	2.9	0.35	73	0	16	C22
Gallbladder (C23-24)	3	0	.	.	.	.	.	.	.	.	.	.	.	.	.	15.3	20.4	10.8	0.6	1.1	0.18	67	0	21	C23-24
Pancreas (C25)	10	0	.	.	.	.	.	2.4	.	2.4	.	3.8	.	.	11.1	.	20.4	64.6	2.0	2.5	0.19	40	0	17	C25
Nose, sinuses (C30-31)	0	0	.	.	.	.	.	.	.	.	.	.	.	.	.	.	.	.	0.0	0.0	0.00	.	.	26	C30-31
Larynx (C32)	0	0	.	.	.	.	.	.	.	.	.	.	.	.	.	.	.	.	0.0	0.0	0.00	.	.	26	C32
Lung, trachea and bronchus (C33-34)	28	0	.	.	.	.	2.6	2.7	.	.	3.0	11.3	23.8	20.2	22.3	45.9	81.7	53.9	5.6	8.3	1.07	89	0	6	C33-34
Melanoma of skin (C43)	8	0	.	.	.	.	.	5.5	2.4	2.6	.	.	4.8	.	22.3	15.3	.	.	1.6	2.3	0.26	100	0	18	C43
Mesothelioma (C45)	0	0	.	.	.	.	.	.	.	.	.	.	.	.	.	.	.	.	0.0	0.0	0.00	.	.	26	C45
Kaposi sarcoma (C46)	1	0	.	.	.	.	.	.	.	.	.	3.8	.	.	.	.	.	.	0.2	0.2	0.02	100	0	24	C46
Breast (C50)	187	0	.	.	.	.	.	8.2	14.4	26.1	93.2	113.2	204.8	141.2	189.2	107.1	163.5	118.5	37.3	47.8	5.30	97	0	1	C50
Cervix uteri (C53)	117	0	.	.	.	.	.	8.2	26.3	39.1	39.1	64.1	61.9	80.7	133.6	122.4	81.7	96.9	23.4	29.7	3.29	98	0	2	C53
Corpus uteri (C54)	32	0	.	.	.	.	.	.	4.8	5.2	.	.	19.0	13.4	44.5	122.4	143.1	21.5	6.4	11.0	1.77	100	0	4	C54
Ovary (C56)	28	0	.	.	.	.	2.2	2.6	4.8	.	6.0	15.1	14.3	26.9	22.3	91.8	20.4	21.5	5.6	8.2	1.03	93	0	7	C56
Kidney (C64)	12	0	3.1	1.7	.	.	2.6	.	.	2.6	3.0	3.8	4.8	.	11.1	30.6	.	10.8	2.4	3.1	0.32	75	0	15	C64
Bladder (C67)	9	0	.	.	.	.	.	.	.	.	.	.	.	6.7	22.3	45.9	.	32.3	1.8	3.2	0.37	89	0	14	C67
Brain, CNS (C70-72)	8	0	3.1	1.7	1.9	.	.	.	.	.	.	.	4.8	6.7	.	30.6	.	.	1.6	2.1	0.24	88	0	19	C70-72
Thyroid (C73)	27	0	.	.	.	2.2	5.2	10.9	4.8	10.4	6.0	11.3	19.0	.	.	61.2	20.4	.	5.4	6.6	0.76	89	0	9	C73
Hodgkin disease (C81)	3	0	.	1.7	1.9	.	.	.	.	.	.	.	4.8	.	.	.	.	.	0.6	0.6	0.04	100	0	23	C81
Non-Hodgkin lymphoma (C82-85,C96)	26	0	.	.	.	.	.	2.7	7.2	.	3.0	11.3	9.5	26.9	22.3	30.6	40.9	64.6	5.2	7.0	0.77	96	0	8	C82-85,C96
Multiple myeloma (C88-C90)	14	0	.	.	.	.	.	.	.	.	.	7.5	4.8	13.4	22.3	30.6	.	53.9	2.8	4.1	0.39	79	0	13	C88-C90
Lymphoid leukaemia (C91)	13	0	.	1.7	.	4.5	.	.	2.4	.	.	11.3	19.0	.	.	15.3	20.4	.	2.6	3.2	0.37	100	0		C91
Myeloid leukaemia (C92-94)	6	0	.	.	.	.	5.2	.	.	.	6.0	.	.	.	.	.	20.4	10.8	1.2	1.4	0.16	67	0		C92-94
Leukaemia unspecified (C95)	0	0	.	.	.	.	.	.	.	.	.	.	.	.	.	.	.	.	0.0	0.0	0.00	.	.		C95
Leukaemia (C91-95)	19	0	.	1.7	.	4.5	5.2	.	2.4	.	6.0	11.3	19.0	.	.	15.3	40.9	10.8	3.8	4.6	0.53	89	0	10	C91-95
Other and unspecified (O&U)	15	0	.	.	.	.	2.7	.	.	.	3.0	.	14.3	13.4	33.4	30.6	.	32.3	3.0	4.6	0.49	73	0	11	O&U
All sites but C44 (ALLbC44)	704	0	12.5	6.9	7.5	13.4	28.8	41.0	83.8	96.5	192.4	320.6	495.2	470.5	679.0	979.3	981.0	947.9	140.6	189.9	22.04	94	0		ALLbC44
All sites (ALL)	721	0	12.5	8.6	7.5	13.4	28.8	43.8	83.8	104.3	195.4	320.6	500.0	490.7	690.1	1009.9	1042.3	958.6	144.0	194.8	22.76	94	0		ALL

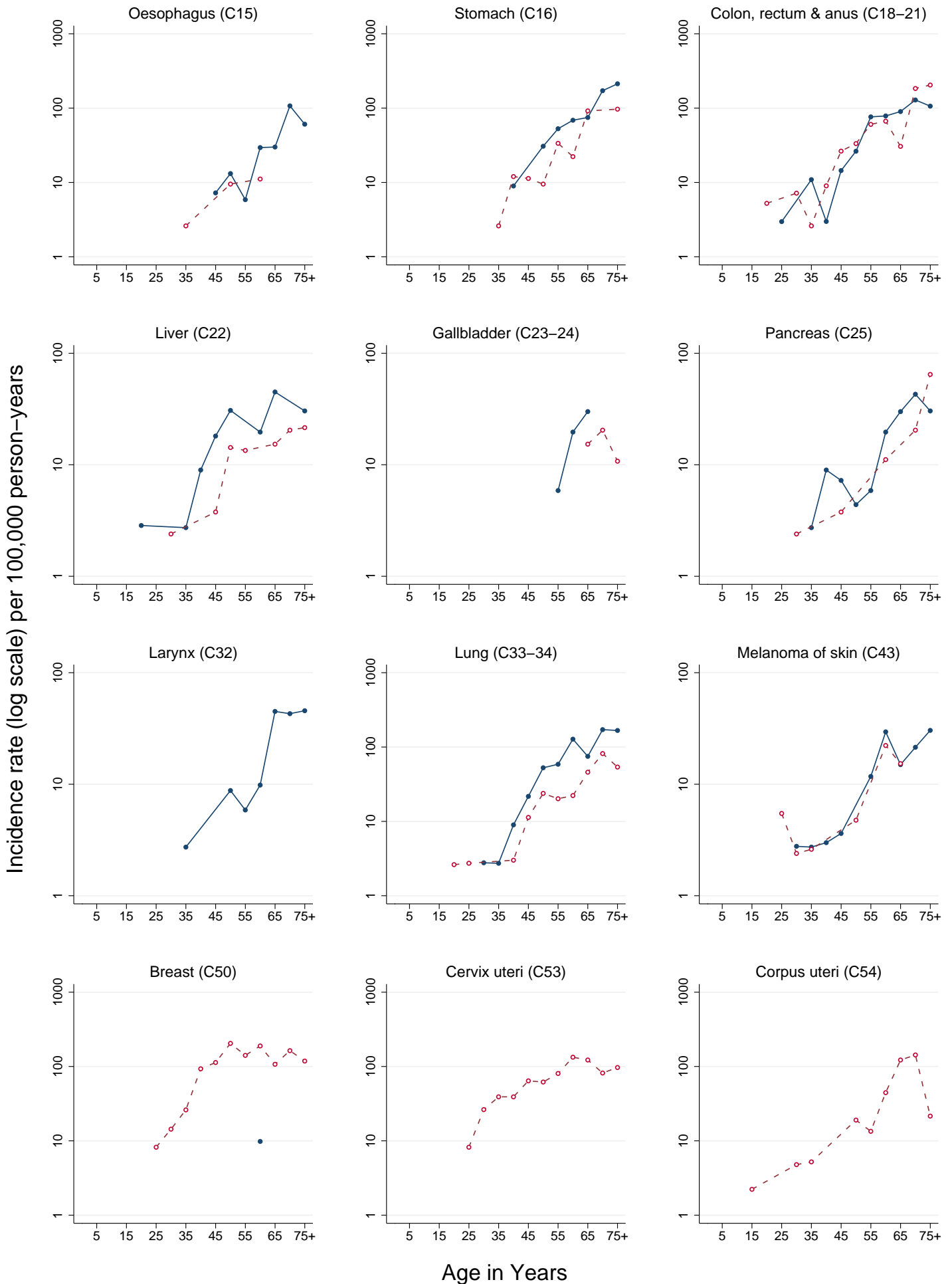
UNK, Unknown; ASR (W), Age Standardized Rate (World Population); CUM., Cumulative; MV, Microscopic Verification; DCO, Death Certificate Only

†Percent

‡Rank based on highest ASR excluding: All sites but C44 and All sites

# FRENCH GUYANA (2003–2007)

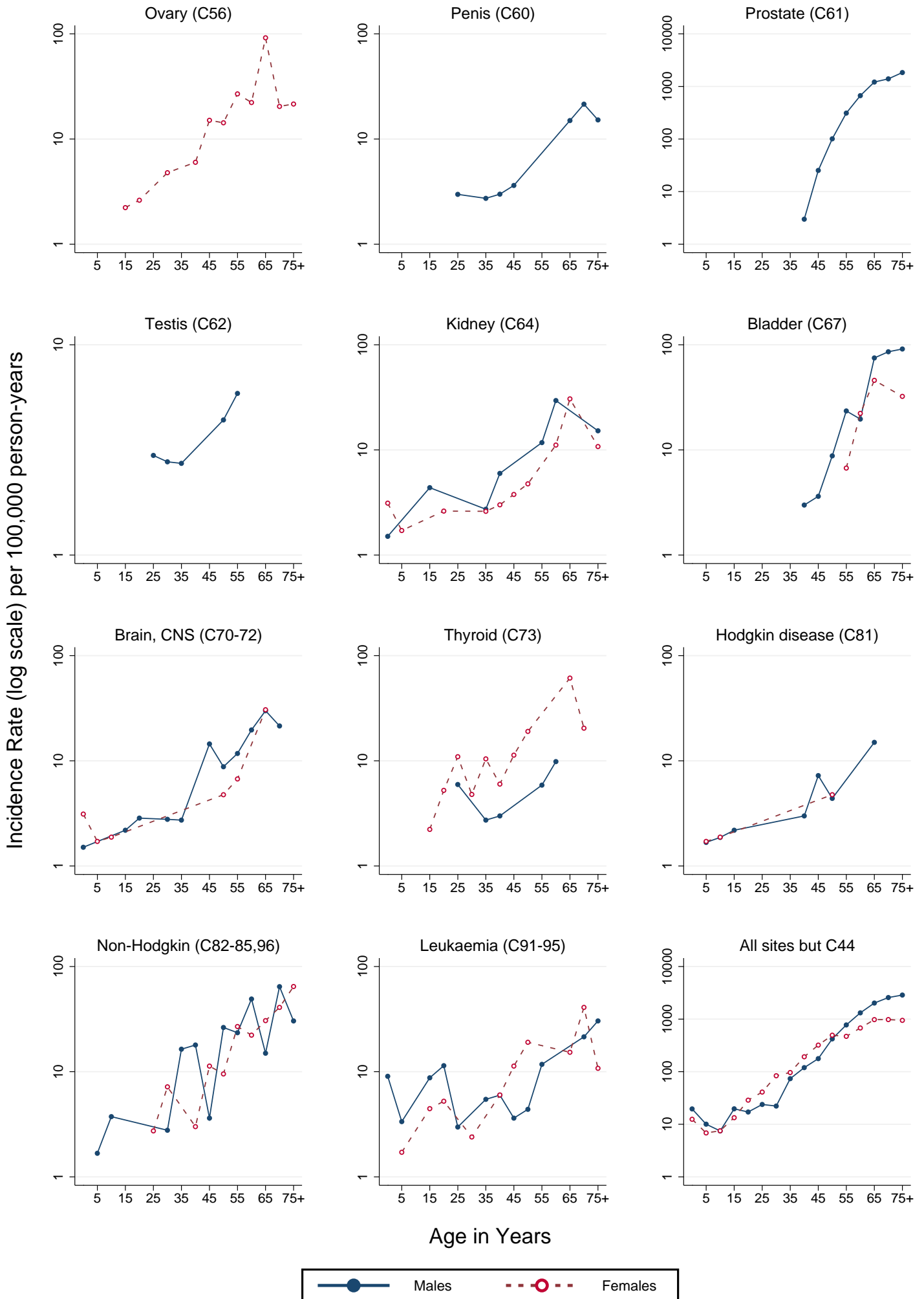
Age-specific incidence rates per 100,000 person-years





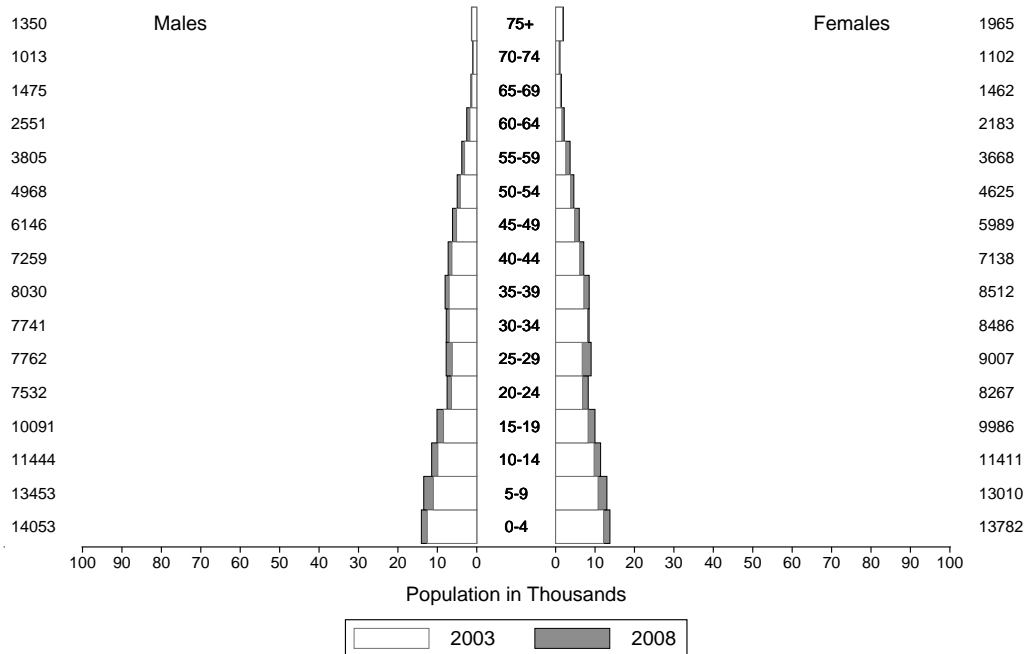
# FRENCH GUYANA (2003-2007)

Age-specific incidence rates per 100,000 person-years



# FRENCH GUYANA (2003-2008)

Average annual person-years



Note: Population values shown for year 2008