

Cancer in Central and South America

MEXICO

This country profile for the Cancer in Central and South America project provides, for each participating cancer registry tables and graphics showing numbers of cases and rates by year, sex and age group for major sites of cancer together with a population pyramid. A country summary is also provided based on aggregated registry data and national mortality data from the WHO mortality database:

(http://www.who.int/healthinfo/statistics/mortality_rawdata/en/index.html)

Citation of any of these data should be in the following format:

“Sierra MS, Abriata MG, Barrios E, Bravo LE, Cueva P, Fernandez L, Pineros M, Rebelo M, de Vries E, Forman D. Editors on behalf of the Cancer in Central and South America Working Group (2016). Cancer in Central and South America. Lyon: International Agency for Research on Cancer. Available from: http://www-dep.iarc.fr/CSU_resources.htm accessed [date].”

Registry Summary Tables and Figures

MEXICO, JALISCO (2006-2011)

Registry Director*: Dr María de las Mercedes Basulto Monroy

Registry Staff*: Jaime Agustín González Álvarez, Luis Daniel Meraz Rosales, Vanesa Lizette Vizcarra Murguía, Pilar Ruiz Gaytan López, Elba Maria Ramos Figueroa, Rubén Sandoval Gloria, María Teresa García Mata.

*Director and staff as notified at time of call for data in 2013. Current contact information for cancer registries in the region can be found at: http://www.iacr.com.fr/index.php?option=com_comprofiler&task=usersList&listid=5.

MEXICO, JALISCO (2006-2010)
Number of Cases in Major Diagnosis Groups
per Calendar Year

SITE	YEAR					TOTAL n (%)
	2006 n (%)	2007 n (%)	2008 n (%)	2009 n (%)	2010 n (%)	
MALES						
Lip, oral cavity, and pharynx (C00-C14)	68 (2.0)	83 (2.3)	57 (1.7)	64 (1.8)	85 (2.5)	357 (2.1)
Digestive organs (C15-C26)	410 (12.3)	475 (13.4)	459 (13.3)	436 (12.4)	516 (15.3)	2296 (13.3)
Respiratory organs (C30-C39)	227 (6.8)	243 (6.9)	219 (6.4)	267 (7.6)	240 (7.1)	1196 (7.0)
Bone, cartilage, and skin (C40-C44)	805 (24.2)	872 (24.6)	895 (26.0)	867 (24.7)	850 (25.1)	4289 (24.9)
Breast (C50)	4 (0.1)	7 (0.2)	8 (0.2)	3 (0.1)	8 (0.2)	30 (0.2)
Male genitalia (C60-C63)	908 (27.3)	927 (26.2)	920 (26.7)	919 (26.2)	802 (23.7)	4476 (26.0)
Urinary organs (C64-C68)	225 (6.8)	222 (6.3)	225 (6.5)	211 (6.0)	232 (6.9)	1115 (6.5)
Eye, brain, and thyroid (C69-C75)	141 (4.2)	124 (3.5)	138 (4.0)	134 (3.8)	168 (5.0)	705 (4.1)
Hematopoietic (C81-C96)	367 (11.0)	366 (10.3)	317 (9.2)	382 (10.9)	302 (8.9)	1734 (10.1)
Other and unspecified	176 (5.3)	220 (6.2)	210 (6.1)	222 (6.3)	179 (5.3)	1007 (5.9)
All sites	3331 (100.0)	3539 (100.0)	3448 (100.0)	3505 (100.0)	3382 (100.0)	17205 (100.0)
FEMALES						
Lip, oral cavity, and pharynx (C00-C14)	50 (1.2)	40 (0.9)	47 (1.1)	34 (0.8)	42 (1.0)	213 (1.0)
Digestive organs (C15-C26)	427 (10.1)	464 (10.0)	370 (8.5)	441 (10.1)	461 (10.8)	2163 (9.9)
Respiratory organs (C30-C39)	119 (2.8)	128 (2.8)	113 (2.6)	124 (2.9)	118 (2.8)	602 (2.8)
Bone, cartilage, and skin (C40-C44)	951 (22.5)	949 (20.5)	969 (22.2)	1004 (23.1)	976 (22.8)	4849 (22.2)
Breast (C50)	1022 (24.2)	1258 (27.2)	1238 (28.4)	1137 (26.2)	1164 (27.2)	5819 (26.6)
Female genitalia (C51-C58)	760 (18.0)	858 (18.6)	748 (17.1)	629 (14.5)	702 (16.4)	3697 (16.9)
Urinary organs (C64-C68)	110 (2.6)	125 (2.7)	107 (2.5)	108 (2.5)	95 (2.2)	545 (2.5)
Eye, brain, and thyroid (C69-C75)	255 (6.0)	260 (5.6)	290 (6.6)	257 (5.9)	266 (6.2)	1328 (6.1)
Hematopoietic (C81-C96)	303 (7.2)	303 (6.6)	277 (6.3)	346 (8.0)	262 (6.1)	1491 (6.8)
Other and unspecified	225 (5.3)	236 (5.1)	207 (4.7)	267 (6.1)	196 (4.6)	1131 (5.2)
All sites	4222 (100.0)	4621 (100.0)	4366 (100.0)	4347 (100.0)	4282 (100.0)	21838 (100.0)
BOTH SEXES						
Lip, oral cavity, and pharynx (C00-C14)	118 (1.6)	123 (1.5)	104 (1.3)	98 (1.2)	127 (1.7)	570 (1.5)
Digestive organs (C15-C26)	837 (11.1)	939 (11.5)	829 (10.6)	877 (11.2)	977 (12.7)	4459 (11.4)
Respiratory organs (C30-C39)	346 (4.6)	371 (4.5)	332 (4.2)	391 (5.0)	358 (4.7)	1798 (4.6)
Bone, cartilage, and skin (C40-C44)	1756 (23.2)	1821 (22.3)	1864 (23.9)	1871 (23.8)	1826 (23.8)	9138 (23.4)
Urinary organs (C64-C68)	335 (4.4)	347 (4.3)	332 (4.2)	319 (4.1)	327 (4.3)	1660 (4.3)
Eye, brain, and thyroid (C69-C75)	396 (5.2)	384 (4.7)	428 (5.5)	391 (5.0)	434 (5.7)	2033 (5.2)
Hematopoietic (C81-C96)	670 (8.9)	669 (8.2)	594 (7.6)	728 (9.3)	564 (7.4)	3225 (8.3)
Other and unspecified	401 (5.3)	456 (5.6)	417 (5.3)	489 (6.2)	375 (4.9)	2138 (5.5)
All sites	7553 (100.0)	8160 (100.0)	7814 (100.0)	7852 (100.0)	7664 (100.0)	39043 (100.0)

MEXICO, JALISCO (2006-2010)
Age Standardized Rate (World Population) per 100,000
in Major Diagnosis Groups per Calendar Year

SITE	YEAR					TOTAL ASR (%)
	2006 ASR (%)	2007 ASR (%)	2008 ASR (%)	2009 ASR (%)	2010 ASR (%)	
MALES						
Lip, oral cavity, and pharynx (C00-C14)	2.6 (2.1)	3.1 (2.4)	2.1 (1.7)	2.2 (1.8)	2.8 (2.5)	2.6 (2.1)
Digestive organs (C15-C26)	15.7 (12.5)	17.9 (13.7)	16.8 (13.6)	15.3 (12.6)	17.4 (15.3)	16.6 (13.5)
Respiratory organs (C30-C39)	8.9 (7.1)	9.3 (7.2)	8.2 (6.6)	9.6 (8.0)	8.3 (7.3)	8.9 (7.2)
Bone, cartilage, and skin (C40-C44)	30.0 (23.9)	32.4 (24.9)	32.0 (25.9)	30.0 (24.8)	28.6 (25.1)	30.6 (24.9)
Breast (C50)	0.2 (0.1)	0.3 (0.2)	0.3 (0.2)	0.1 (0.1)	0.3 (0.3)	0.2 (0.2)
Male genitalia (C60-C63)	35.9 (28.6)	34.8 (26.7)	34.0 (27.5)	32.2 (26.6)	27.6 (24.2)	32.7 (26.7)
Urinary organs (C64-C68)	8.9 (7.1)	8.3 (6.4)	8.3 (6.7)	7.4 (6.1)	8.2 (7.2)	8.2 (6.7)
Eye, brain, and thyroid (C69-C75)	4.8 (3.8)	4.3 (3.3)	4.5 (3.7)	4.3 (3.5)	5.4 (4.7)	4.7 (3.8)
Hematopoietic (C81-C96)	12.2 (9.7)	12.1 (9.3)	10.4 (8.4)	12.2 (10.1)	9.6 (8.4)	11.3 (9.2)
Other and unspecified	6.5 (5.2)	8.0 (6.1)	7.2 (5.8)	7.7 (6.4)	5.8 (5.1)	7.0 (5.7)
All sites	125.5 (100.0)	130.4 (100.0)	123.5 (100.0)	121.0 (100.0)	113.7 (100.0)	122.6 (100.0)
FEMALES						
Lip, oral cavity, and pharynx (C00-C14)	1.6 (1.2)	1.2 (0.9)	1.4 (1.1)	1.0 (0.8)	1.2 (1.0)	1.3 (1.0)
Digestive organs (C15-C26)	14.5 (10.6)	15.1 (10.5)	11.4 (8.6)	13.2 (10.2)	13.6 (11.1)	13.5 (10.2)
Respiratory organs (C30-C39)	4.2 (3.1)	4.3 (3.0)	3.6 (2.7)	3.9 (3.0)	3.4 (2.8)	3.9 (2.9)
Bone, cartilage, and skin (C40-C44)	30.4 (22.1)	29.4 (20.4)	29.4 (22.1)	29.3 (22.6)	27.6 (22.4)	29.2 (21.9)
Breast (C50)	33.3 (24.2)	39.4 (27.3)	37.8 (28.5)	33.8 (26.1)	33.7 (27.3)	35.6 (26.7)
Female genitalia (C51-C58)	24.8 (18.1)	27.0 (18.7)	22.5 (16.9)	18.5 (14.3)	19.9 (16.1)	22.4 (16.8)
Urinary organs (C64-C68)	3.8 (2.7)	3.9 (2.7)	3.5 (2.6)	3.4 (2.6)	2.8 (2.3)	3.4 (2.6)
Eye, brain, and thyroid (C69-C75)	7.9 (5.7)	7.7 (5.4)	8.6 (6.4)	7.6 (5.9)	7.5 (6.1)	7.9 (5.9)
Hematopoietic (C81-C96)	9.7 (7.1)	9.1 (6.3)	8.3 (6.2)	10.4 (8.1)	7.8 (6.3)	9.0 (6.8)
Other and unspecified	7.2 (5.3)	7.1 (4.9)	6.4 (4.8)	8.1 (6.3)	5.8 (4.7)	6.9 (5.2)
All sites	137.4 (100.0)	144.3 (100.0)	132.8 (100.0)	129.3 (100.0)	123.3 (100.0)	133.1 (100.0)
BOTH SEXES						
Lip, oral cavity, and pharynx (C00-C14)	2.1 (1.6)	2.1 (1.5)	1.7 (1.3)	1.5 (1.2)	2.0 (1.7)	1.9 (1.5)
Digestive organs (C15-C26)	15.0 (11.4)	16.4 (12.0)	13.9 (10.9)	14.2 (11.4)	15.3 (13.0)	15.0 (11.7)
Respiratory organs (C30-C39)	6.4 (4.9)	6.6 (4.8)	5.7 (4.5)	6.5 (5.2)	5.6 (4.8)	6.2 (4.8)
Bone, cartilage, and skin (C40-C44)	30.2 (23.0)	30.7 (22.4)	30.6 (23.9)	29.5 (23.7)	28.0 (23.7)	29.8 (23.4)
Urinary organs (C64-C68)	6.1 (4.7)	5.9 (4.3)	5.7 (4.5)	5.2 (4.2)	5.3 (4.5)	5.6 (4.4)
Eye, brain, and thyroid (C69-C75)	6.4 (4.9)	6.1 (4.4)	6.6 (5.2)	6.1 (4.9)	6.5 (5.5)	6.3 (5.0)
Hematopoietic (C81-C96)	10.9 (8.3)	10.6 (7.7)	9.3 (7.3)	11.3 (9.0)	8.6 (7.3)	10.1 (7.9)
Other and unspecified	6.9 (5.2)	7.5 (5.5)	6.7 (5.3)	7.9 (6.4)	5.8 (4.9)	7.0 (5.5)
All sites	131.1 (100.0)	137.0 (100.0)	127.8 (100.0)	124.8 (100.0)	118.3 (100.0)	127.5 (100.0)

MEXICO, JALISCO (2006-2010)
Incidence per 100,000 by Age Group (years)
Males

SITE	ALL CASES	UNK AGE	0-4	5-9	10-14	15-19	20-24	25-29	30-34	35-39	40-44	45-49	50-54	55-59	60-64	65-69	70-74	75+	CRUDE RATE	ASR (W)	CUM. RATE (0-74)†	MV (%)	DCO (%)	Rank‡	ICD10
Lip, oral cavity, and pharynx (C00-14)	357	24	.	.	.	0.2	0.5	0.5	0.4	1.1	1.4	2.7	4.9	8.3	9.1	13.1	12.1	18.5	2.1	2.6	0.29	100	0	12	C00-14
Oesophagus (C15)	146	10	0.1	.	0.2	0.8	1.5	1.7	2.8	4.3	7.0	5.6	8.4	0.9	1.1	0.13	100	0	18	C15
Stomach (C16)	643	53	0.1	.	.	.	0.3	1.3	2.1	2.8	2.8	4.9	7.4	11.4	16.0	23.8	31.5	37.6	3.8	4.6	0.55	100	0	5	C16
Colon (C18)	662	47	.	.	.	0.2	0.4	1.0	1.3	2.2	2.7	6.4	8.5	14.6	16.7	19.8	33.2	29.5	3.9	4.7	0.58	100	0		C18
Rectum (C19-20)	365	35	.	.	0.1	0.1	0.4	0.7	1.5	1.9	1.9	2.3	4.9	6.7	8.7	13.4	15.9	17.7	2.1	2.6	0.31	100	0		C19-20
Colorectal (C18-20)	1027	82	.	.	0.1	0.2	0.4	1.4	2.1	3.7	4.6	8.7	13.3	21.3	25.4	33.2	49.1	47.2	6.0	7.4	0.89	100	0	2	C18-20
Anus (C21)	13	1	0.1	.	0.1	0.1	0.4	.	0.5	0.3	0.4	0.3	0.1	0.1	0.01	100	0	27	C21
Colon, rectum and anus (C18-21)	1040	83	.	.	0.1	0.2	0.4	1.4	2.2	3.7	4.7	8.8	13.8	21.3	25.8	33.5	49.5	47.5	6.1	7.5	0.90	100	0		C18-21
Liver (C22)	34	1	0.1	0.4	0.4	0.7	0.7	2.1	1.7	2.0	0.2	0.3	0.03	100	0	23	C22
Gallbladder (C23-24)	139	17	0.1	0.3	0.2	0.7	0.9	1.4	2.0	4.8	4.6	7.8	6.9	0.8	1.0	0.13	100	0	19	C23-24
Pancreas (C25)	182	6	0.1	0.2	0.8	2.2	2.8	5.0	5.9	6.7	10.3	6.7	1.1	1.4	0.18	100	0	16	C25
Nose, sinuses (C30-31)	31	0	0.1	0.1	.	0.1	0.1	.	0.4	0.1	0.4	0.1	.	0.7	0.5	0.9	.	2.0	0.2	0.2	0.02	100	0	26	C30-31
Larynx (C32)	306	12	0.2	0.1	0.5	0.6	1.8	3.5	4.8	10.3	17.1	15.9	20.8	1.8	2.3	0.28	100	0	13	C32
Lung, trachea and bronchus (C33-34)	814	58	.	.	.	0.1	.	0.5	0.4	1.0	2.3	3.5	7.8	16.7	21.2	35.7	53.9	55.0	4.8	6.1	0.77	100	0	3	C33-34
Melanoma of skin (C43)	301	24	.	0.2	0.1	0.1	0.1	0.3	1.0	1.2	2.4	2.8	3.3	4.4	7.1	8.5	8.2	16.5	1.8	2.1	0.22	100	0	14	C43
Mesothelioma (C45)	31	4	.	.	.	0.1	.	0.1	.	0.1	0.2	0.2	0.4	0.4	0.7	1.2	0.4	1.7	0.2	0.2	0.02	100	0	24	C45
Kaposi sarcoma (C46)	72	13	0.1	0.5	0.7	0.5	1.1	0.3	0.4	0.7	0.7	0.9	0.9	1.2	0.4	0.4	0.04	100	0	22	C46
Breast (C50)	30	3	0.1	0.4	0.2	0.1	0.2	0.7	1.2	1.7	2.0	0.2	0.2	0.03	100	0	25	C50
Penis (C60)	142	6	0.1	0.1	0.1	1.0	0.8	1.5	1.3	2.0	4.3	4.3	4.7	9.8	0.8	1.0	0.11	100	0	20	C60
Prostate (C61)	3779	595	.	.	.	0.1	.	0.3	0.7	1.9	2.0	5.6	15.7	43.8	102.6	188.7	281.3	288.0	22.1	28.9	3.81	100	0	1	C61
Testis (C62)	543	29	0.6	0.1	0.6	3.2	7.7	8.0	6.6	3.5	1.7	1.5	1.0	1.4	0.9	1.8	2.2	2.3	3.2	2.9	0.21	100	0	10	C62
Kidney (C64)	466	28	1.2	0.3	0.2	0.1	0.2	0.4	0.4	1.3	2.1	4.7	5.8	9.4	12.1	17.4	25.9	14.2	2.7	3.4	0.43	100	0	9	C64
Bladder (C67)	631	64	0.1	0.2	0.4	0.7	1.4	3.1	5.0	6.7	18.3	27.1	32.7	54.1	3.7	4.6	0.53	100	0	6	C67
Brain, CNS (C70-72)	416	27	2.1	1.8	0.8	0.4	0.9	1.5	1.8	2.5	1.9	2.9	4.9	6.7	8.5	5.5	8.6	4.9	2.4	2.7	0.27	100	0	11	C70-72
Thyroid (C73)	184	9	.	.	.	0.1	0.4	0.9	1.3	1.4	1.6	1.6	1.7	3.7	3.9	3.4	5.6	4.3	1.1	1.2	0.13	100	0	17	C73
Hodgkin disease (C81)	231	21	0.2	0.6	1.0	1.3	1.6	1.5	1.0	1.2	0.8	1.5	1.4	1.4	1.6	3.0	3.9	3.8	1.3	1.4	0.12	100	0	15	C81
Non-Hodgkin lymphoma (C82-85,C96)	775	65	1.4	1.6	1.1	1.1	1.6	2.8	2.1	3.1	4.0	5.7	7.8	9.8	12.6	19.8	26.7	29.2	4.5	5.2	0.55	100	0	4	C82-85,C96
Multiple myeloma (C88-C90)	119	2	0.1	0.1	.	0.6	1.1	0.8	4.3	6.9	4.9	4.7	3.5	0.7	0.9	0.12	100	0	21	C88-C90
Lymphoid leukaemia (C91)	385	10	5.8	3.2	3.0	1.6	1.7	0.8	1.0	0.7	0.4	0.7	1.4	1.8	2.1	1.8	2.6	8.1	2.2	2.4	0.15	100	0		C91
Myeloid leukaemia (C92-94)	221	2	1.0	0.7	0.4	0.6	1.0	0.8	1.3	1.2	1.8	1.6	1.5	2.8	3.0	4.0	5.2	4.1	1.3	1.4	0.14	100	0		C92-94
Leukaemia unspecified (C95)	3	0	0.1	0.1	0.2	0.0	0.0	0.00	100	0		C95
Leukaemia (C91-95)	609	12	6.9	3.8	3.5	2.2	2.8	1.6	2.4	2.0	2.2	2.2	2.9	4.8	5.0	5.8	7.8	12.2	3.6	3.8	0.28	100	0	8	C91-95
Other and unspecified (O&U)	546	46	0.1	.	.	0.1	0.6	0.6	1.0	1.4	3.0	3.5	5.8	8.3	15.5	24.1	27.1	25.2	3.2	4.0	0.50	100	0	7	O&U
All sites but C44 (ALLbC44)	13401	1276	14.8	10.2	9.4	12.0	19.4	23.8	28.3	35.6	43.5	71.1	109.2	193.0	316.4	476.3	651.9	703.3	78.2	95.2	11.13	100	0		ALLbC44
All sites (ALL)	17205	1661	14.8	10.2	9.5	12.1	19.8	25.2	31.3	41.5	52.9	89.6	143.4	241.4	410.0	607.1	868.2	1036.1	100.4	122.6	14.26	100	0		ALL

UNK, Unknown; ASR (W), Age Standardized Rate (World Population); CUM., Cumulative; MV, Microscopic Verification; DCO, Death Certificate Only

†Percent

‡Rank based on highest ASR excluding: All sites but C44 and All sites

MEXICO, JALISCO (2006-2010)
Incidence per 100,000 by Age Group (years)
Females

SITE	ALL CASES	UNK AGE	0-4	5-9	10-14	15-19	20-24	25-29	30-34	35-39	40-44	45-49	50-54	55-59	60-64	65-69	70-74	75+	CRUDE RATE	ASR (W)	CUM. RATE (0-74)†	MV (%)	DCO (%)	Rank‡	ICD10
Lip, oral cavity, and pharynx (C00-14)	213	12	.	0.1	.	0.1	0.4	0.3	0.4	1.1	1.1	1.0	2.5	3.2	5.5	4.0	7.2	9.4	1.2	1.3	0.14	100	0	17	C00-14
Oesophagus (C15)	43	3	.	.	0.1	.	.	0.1	0.1	.	0.3	0.2	0.6	0.6	1.6	0.8	2.5	1.1	0.2	0.3	0.04	100	0	23	C15
Stomach (C16)	482	43	0.5	0.9	1.0	2.6	3.5	4.4	6.8	10.9	13.6	22.4	21.2	2.7	3.0	0.37	100	0	11	C16
Colon (C18)	671	52	.	0.1	.	0.1	0.1	0.5	1.7	2.8	4.1	6.1	7.9	9.7	15.4	17.8	25.3	22.7	3.8	4.2	0.50	100	0		C18
Rectum (C19-20)	311	28	0.5	0.9	0.9	1.3	2.3	2.3	3.4	5.5	8.1	8.8	9.0	11.8	1.8	1.9	0.22	100	0		C19-20
Colorectal (C18-20)	982	80	.	0.1	.	0.1	0.1	1.1	2.6	3.7	5.4	8.3	11.3	15.2	23.5	26.6	34.4	34.6	5.6	6.1	0.72	100	0	3	C18-20
Anus (C21)	18	1	0.1	.	0.2	0.1	0.3	0.4	0.8	0.7	0.9	0.1	0.1	0.01	100	0	26	C21
Colon, rectum and anus (C18-21)	1000	81	.	0.1	.	0.1	0.1	1.1	2.6	3.7	5.4	8.5	11.4	15.5	23.9	27.4	35.1	35.4	5.7	6.2	0.73	100	0		C18-21
Liver (C22)	47	3	0.1	0.2	0.2	.	0.1	0.2	0.8	0.6	1.2	1.9	1.4	2.2	0.3	0.3	0.03	100	0	21	C22
Gallbladder (C23-24)	316	27	.	.	.	0.2	0.1	0.1	0.3	0.6	0.7	1.0	2.8	6.2	7.1	12.8	15.9	14.4	1.8	2.0	0.26	100	0	13	C23-24
Pancreas (C25)	192	6	.	.	0.1	0.1	0.1	0.1	0.2	0.3	0.7	1.5	2.9	2.7	6.9	6.4	5.4	8.3	1.1	1.2	0.14	100	0	18	C25
Nose, sinuses (C30-31)	24	1	.	.	.	0.1	0.1	0.1	0.1	.	.	0.3	0.4	0.6	.	1.1	.	1.1	0.1	0.1	0.01	100	0	25	C30-31
Larynx (C32)	45	1	.	.	.	0.2	0.1	0.1	.	.	0.1	0.1	0.3	0.6	2.4	0.8	2.5	2.2	0.3	0.3	0.04	100	0	22	C32
Lung, trachea and bronchus (C33-34)	507	48	.	.	0.1	0.7	0.3	0.8	1.3	3.1	5.1	8.4	12.3	19.4	27.5	18.4	27.5	18.4	2.9	3.3	0.44	100	0	9	C33-34
Melanoma of skin (C43)	345	30	.	0.1	.	0.6	0.9	0.9	1.9	2.8	2.4	2.4	3.6	6.5	5.1	4.0	8.7	14.0	2.0	2.0	0.21	100	0	14	C43
Mesothelioma (C45)	25	4	.	.	.	0.1	0.3	0.6	0.8	0.3	1.4	1.1	0.1	0.2	0.02	100	0	24	C45
Kaposi sarcoma (C46)	9	0	0.2	0.2	.	0.1	.	.	.	0.4	0.7	0.1	0.0	0.00	100	0	27	C46
Breast (C50)	5819	635	.	.	.	1.4	4.5	15.9	35.7	61.1	78.4	89.4	105.4	105.4	107.1	101.2	102.4	84.2	32.9	35.6	3.94	100	0	1	C50
Cervix uteri (C53)	1850	62	.	.	.	1.2	3.4	8.5	14.9	17.2	26.1	26.1	29.3	29.3	37.4	31.6	25.3	36.1	10.5	11.0	1.16	100	0	2	C53
Corpus uteri (C54)	657	52	.	0.1	0.1	0.1	0.3	1.2	1.7	3.7	4.7	4.7	10.0	14.1	22.5	20.5	18.8	13.3	3.7	4.3	0.53	100	0	8	C54
Ovary (C56)	889	54	0.1	0.4	0.5	1.3	2.2	2.7	4.4	5.4	7.8	9.7	10.7	14.1	13.6	13.3	18.5	13.8	5.0	5.2	0.56	100	0	4	C56
Kidney (C64)	280	17	0.8	0.2	0.2	0.1	.	0.3	0.5	0.6	1.8	2.3	3.9	3.3	7.7	8.5	8.7	7.7	1.6	1.8	0.21	100	0	15	C64
Bladder (C67)	258	26	0.1	0.1	.	0.1	0.2	0.4	0.3	0.4	1.0	2.9	4.0	6.1	7.7	7.7	10.9	14.0	1.5	1.6	0.19	100	0	16	C67
Brain, CNS (C70-72)	413	29	1.7	2.0	1.3	0.9	0.7	1.1	1.3	2.3	2.2	2.9	2.6	5.4	6.9	5.6	8.7	5.0	2.3	2.5	0.24	100	0	12	C70-72
Thyroid (C73)	836	81	.	0.2	0.9	2.7	4.3	5.4	5.6	5.6	5.6	9.5	8.4	10.3	10.9	13.3	14.8	10.1	4.7	4.9	0.51	100	0	5	C73
Hodgkin disease (C81)	192	17	.	0.2	0.7	0.9	1.5	1.2	1.9	1.0	0.1	0.7	1.1	1.0	1.2	2.7	3.6	2.6	1.1	1.0	0.10	100	0	19	C81
Non-Hodgkin lymphoma (C82-85,C96)	704	69	1.2	0.4	0.7	0.8	1.5	1.4	1.7	1.4	3.0	5.0	7.8	8.6	15.0	16.7	21.7	21.6	4.0	4.4	0.48	100	0	7	C82-85,C96
Multiple myeloma (C88-C90)	96	7	.	.	0.1	0.1	0.1	0.1	0.1	0.2	0.4	0.9	1.3	1.7	2.8	3.2	2.9	2.8	0.5	0.6	0.07	100	0	20	C88-C90
Lymphoid leukaemia (C91)	310	9	5.5	3.3	2.8	1.3	0.6	0.5	0.6	0.5	0.3	1.0	1.3	0.6	1.6	2.1	1.1	2.0	1.8	1.9	0.12	100	0		C91
Myeloid leukaemia (C92-94)	188	2	0.9	0.6	0.8	0.7	0.8	0.7	0.9	0.8	1.2	1.3	1.8	1.6	2.2	1.3	2.9	3.1	1.1	1.1	0.09	100	0		C92-94
Leukaemia unspecified (C95)	1	0	0.1	0.0	0.0	0.00	100	0		C95
Leukaemia (C91-95)	499	11	6.4	4.0	3.6	2.0	1.4	1.2	1.5	1.3	1.5	2.4	3.1	2.2	3.8	3.5	4.0	5.0	2.8	3.0	0.21	100	0	10	C91-95
Other and unspecified (O&U)	727	89	.	.	0.2	0.6	0.6	0.6	1.4	2.3	3.8	6.1	7.8	11.4	17.6	19.7	20.6	24.5	4.1	4.5	0.52	100	0	6	O&U
All sites but C44 (ALLbC44)	17491	1501	12.6	8.5	9.7	10.6	17.1	27.4	53.3	86.2	129.8	179.4	221.8	277.2	348.5	357.4	412.3	395.6	99.0	106.9	11.77	100	0		ALLbC44
All sites (ALL)	21838	1922	12.6	8.5	9.8	10.8	17.6	29.2	57.7	92.8	142.2	198.7	258.3	325.5	440.2	480.9	604.9	694.1	123.6	133.1	14.75	100	0		ALL

UNK, Unknown; ASR (W), Age Standardized Rate (World Population); CUM., Cumulative; MV, Microscopic Verification; DCO, Death Certificate Only

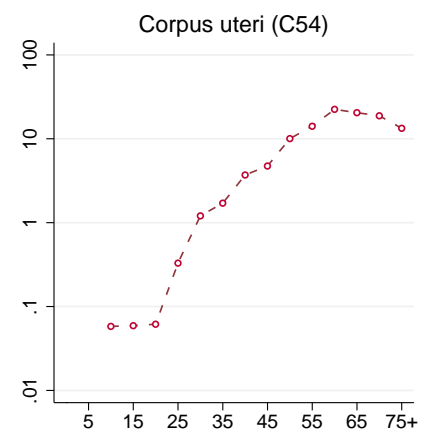
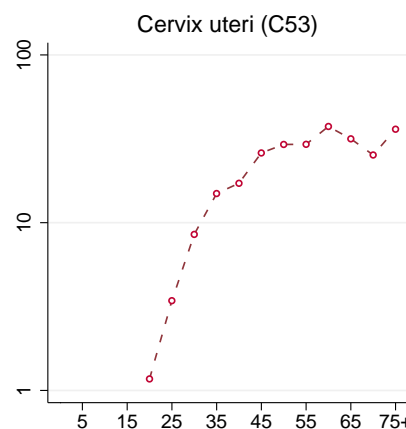
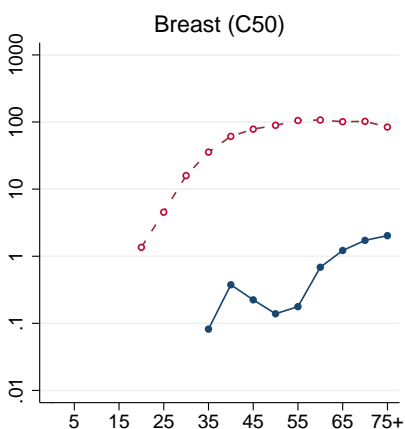
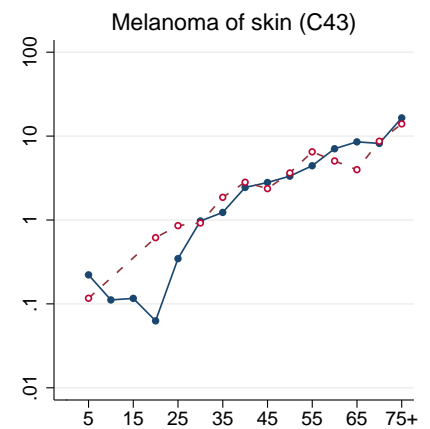
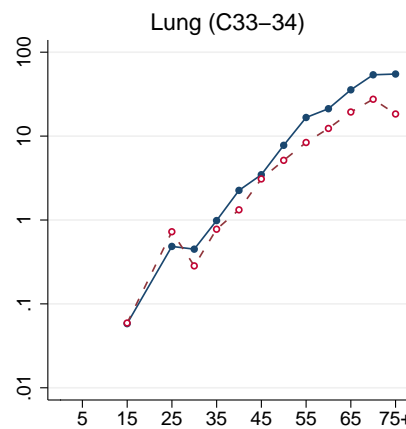
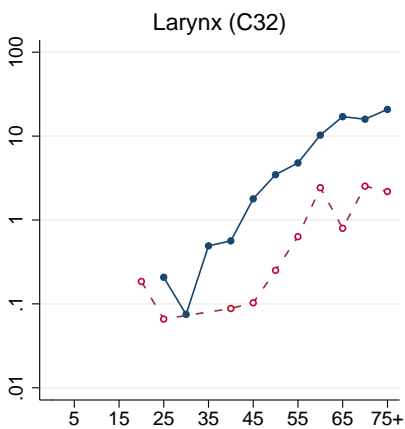
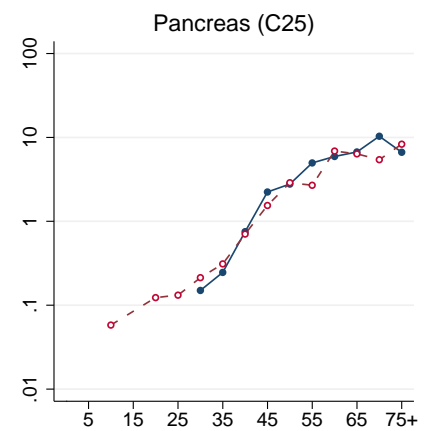
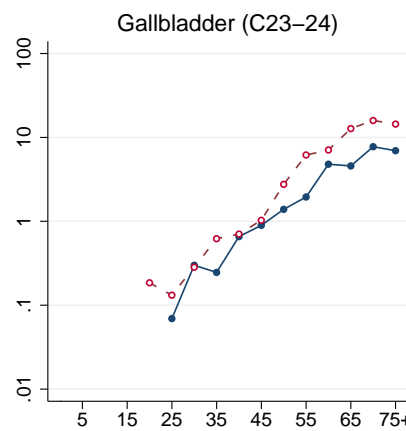
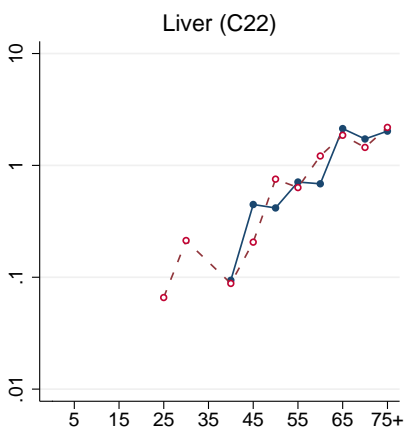
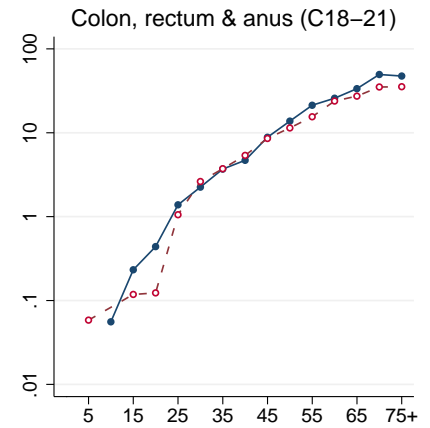
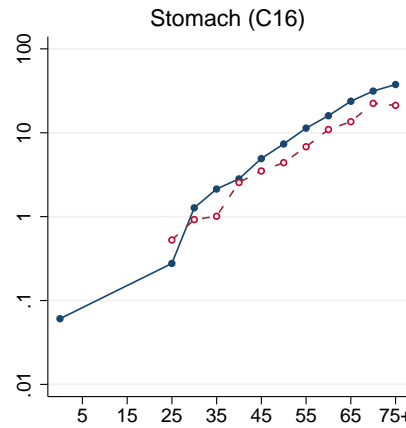
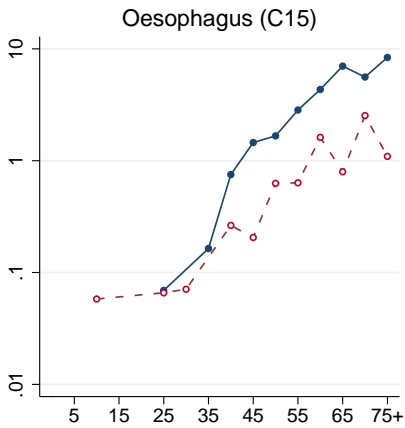
†Percent

‡Rank based on highest ASR excluding: All sites but C44 and All sites

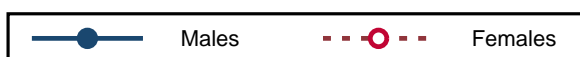
MEXICO, JALISCO (2006–2010)

Age-specific incidence rates per 100,000 person-years

Incidence rate (log scale) per 100,000 person-years

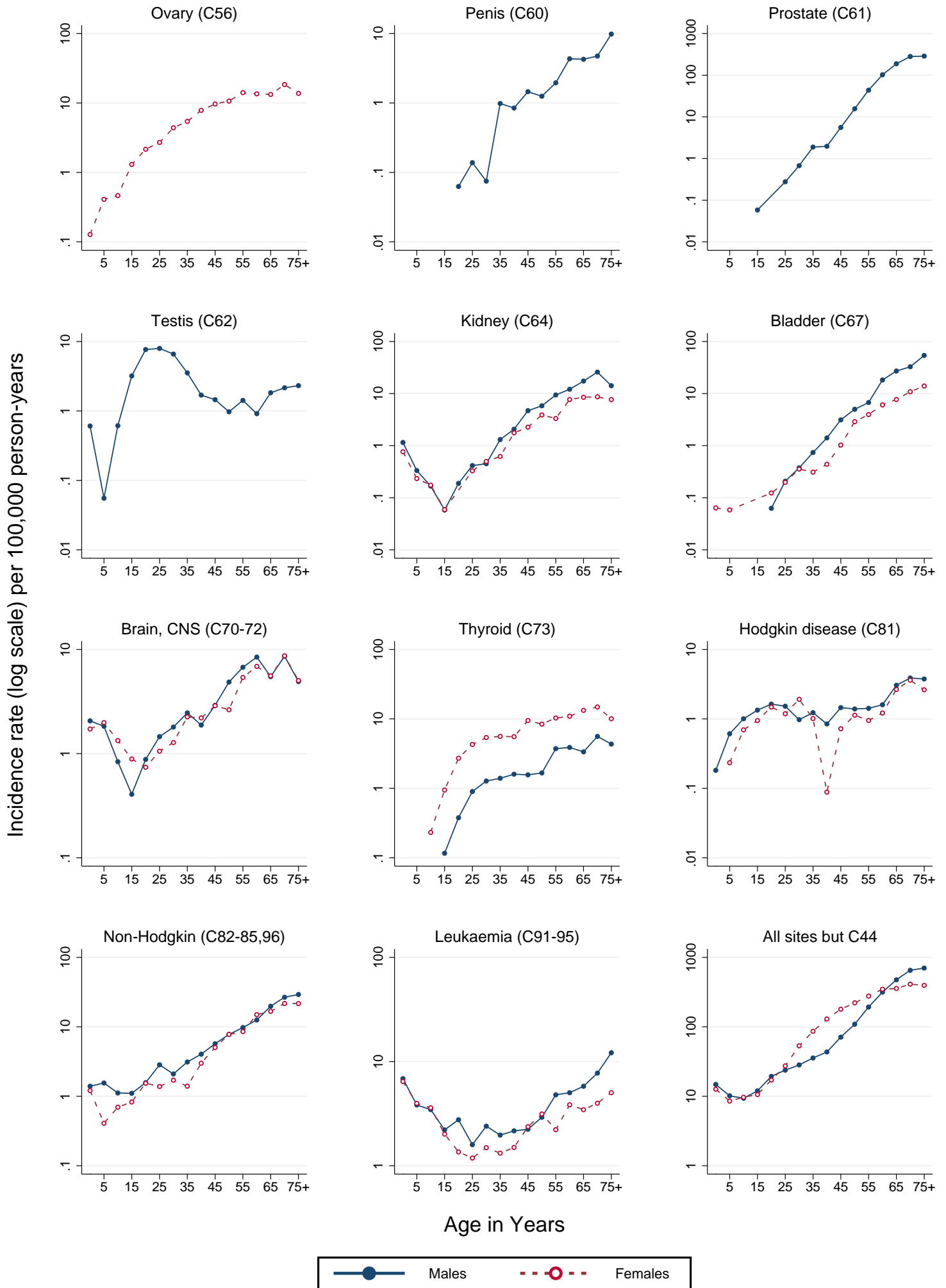


Age in Years



MEXICO, JALISCO (2006-2010)

Age-specific incidence rates per 100,000 person-years



Country's Summary Tables and Figures

MEXICO^{1,2,3}

(2006-2011)

¹ Country's incidence rates were estimated using data from the histopathology-based cancer registry of the State of Jalisco

² National mortality data obtained from the WHO mortality database:
http://www.who.int/healthinfo/statistics/mortality_rawdata/en/index.html

³ Methodological details are included in "Cancer in Central and South America: Methodology"
<http://dx.doi.org/10.1016/j.canep.2016.07.020>

MEXICO* (2006-2010)
Number of Cases in Major Diagnosis Groups
per Calendar Year

SITE	YEAR					TOTAL n (%)
	2006 n (%)	2007 n (%)	2008 n (%)	2009 n (%)	2010 n (%)	
MALES						
Lip, oral cavity, and pharynx (C00-C14)	68 (2.0)	83 (2.3)	57 (1.7)	64 (1.8)	85 (2.5)	357 (2.1)
Digestive organs (C15-C26)	410 (12.3)	475 (13.4)	459 (13.3)	436 (12.4)	516 (15.3)	2296 (13.3)
Respiratory organs (C30-C39)	227 (6.8)	243 (6.9)	219 (6.4)	267 (7.6)	240 (7.1)	1196 (7.0)
Bone, cartilage, and skin (C40-C44)	805 (24.2)	872 (24.6)	895 (26.0)	867 (24.7)	850 (25.1)	4289 (24.9)
Breast (C50)	4 (0.1)	7 (0.2)	8 (0.2)	3 (0.1)	8 (0.2)	30 (0.2)
Male genitalia (C60-C63)	908 (27.3)	927 (26.2)	920 (26.7)	919 (26.2)	802 (23.7)	4476 (26.0)
Urinary organs (C64-C68)	225 (6.8)	222 (6.3)	225 (6.5)	211 (6.0)	232 (6.9)	1115 (6.5)
Eye, brain, and thyroid (C69-C75)	141 (4.2)	124 (3.5)	138 (4.0)	134 (3.8)	168 (5.0)	705 (4.1)
Hematopoietic (C81-C96)	367 (11.0)	366 (10.3)	317 (9.2)	382 (10.9)	302 (8.9)	1734 (10.1)
Other and unspecified	176 (5.3)	220 (6.2)	210 (6.1)	222 (6.3)	179 (5.3)	1007 (5.9)
All sites	3331 (100.0)	3539 (100.0)	3448 (100.0)	3505 (100.0)	3382 (100.0)	17205 (100.0)
FEMALES						
Lip, oral cavity, and pharynx (C00-C14)	50 (1.2)	40 (0.9)	47 (1.1)	34 (0.8)	42 (1.0)	213 (1.0)
Digestive organs (C15-C26)	427 (10.1)	464 (10.0)	370 (8.5)	441 (10.1)	461 (10.8)	2163 (9.9)
Respiratory organs (C30-C39)	119 (2.8)	128 (2.8)	113 (2.6)	124 (2.9)	118 (2.8)	602 (2.8)
Bone, cartilage, and skin (C40-C44)	951 (22.5)	949 (20.5)	969 (22.2)	1004 (23.1)	976 (22.8)	4849 (22.2)
Breast (C50)	1022 (24.2)	1258 (27.2)	1238 (28.4)	1137 (26.2)	1164 (27.2)	5819 (26.6)
Female genitalia (C51-C58)	760 (18.0)	858 (18.6)	748 (17.1)	629 (14.5)	702 (16.4)	3697 (16.9)
Urinary organs (C64-C68)	110 (2.6)	125 (2.7)	107 (2.5)	108 (2.5)	95 (2.2)	545 (2.5)
Eye, brain, and thyroid (C69-C75)	255 (6.0)	260 (5.6)	290 (6.6)	257 (5.9)	266 (6.2)	1328 (6.1)
Hematopoietic (C81-C96)	303 (7.2)	303 (6.6)	277 (6.3)	346 (8.0)	262 (6.1)	1491 (6.8)
Other and unspecified	225 (5.3)	236 (5.1)	207 (4.7)	267 (6.1)	196 (4.6)	1131 (5.2)
All sites	4222 (100.0)	4621 (100.0)	4366 (100.0)	4347 (100.0)	4282 (100.0)	21838 (100.0)
BOTH SEXES						
Lip, oral cavity, and pharynx (C00-C14)	118 (1.6)	123 (1.5)	104 (1.3)	98 (1.2)	127 (1.7)	570 (1.5)
Digestive organs (C15-C26)	837 (11.1)	939 (11.5)	829 (10.6)	877 (11.2)	977 (12.7)	4459 (11.4)
Respiratory organs (C30-C39)	346 (4.6)	371 (4.5)	332 (4.2)	391 (5.0)	358 (4.7)	1798 (4.6)
Bone, cartilage, and skin (C40-C44)	1756 (23.2)	1821 (22.3)	1864 (23.9)	1871 (23.8)	1826 (23.8)	9138 (23.4)
Urinary organs (C64-C68)	335 (4.4)	347 (4.3)	332 (4.2)	319 (4.1)	327 (4.3)	1660 (4.3)
Eye, brain, and thyroid (C69-C75)	396 (5.2)	384 (4.7)	428 (5.5)	391 (5.0)	434 (5.7)	2033 (5.2)
Hematopoietic (C81-C96)	670 (8.9)	669 (8.2)	594 (7.6)	728 (9.3)	564 (7.4)	3225 (8.3)
Other and unspecified	401 (5.3)	456 (5.6)	417 (5.3)	489 (6.2)	375 (4.9)	2138 (5.5)
All sites	7553 (100.0)	8160 (100.0)	7814 (100.0)	7852 (100.0)	7664 (100.0)	39043 (100.0)

*Aggregated data from the histopathology-based cancer registry of the State of Jalisco

MEXICO* (2006-2010)
Age Standardized Rate (World Population) per 100,000
in Major Diagnosis Groups per Calendar Year

SITE	YEAR					TOTAL ASR (%)
	2006 ASR (%)	2007 ASR (%)	2008 ASR (%)	2009 ASR (%)	2010 ASR (%)	
MALES						
Lip, oral cavity, and pharynx (C00-C14)	2.6 (2.1)	3.1 (2.4)	2.1 (1.7)	2.2 (1.8)	2.8 (2.5)	2.6 (2.1)
Digestive organs (C15-C26)	15.7 (12.5)	17.9 (13.7)	16.8 (13.6)	15.3 (12.6)	17.4 (15.3)	16.6 (13.5)
Respiratory organs (C30-C39)	8.9 (7.1)	9.3 (7.2)	8.2 (6.6)	9.6 (8.0)	8.3 (7.3)	8.9 (7.2)
Bone, cartilage, and skin (C40-C44)	30.0 (23.9)	32.4 (24.9)	32.0 (25.9)	30.0 (24.8)	28.6 (25.1)	30.6 (24.9)
Breast (C50)	0.2 (0.1)	0.3 (0.2)	0.3 (0.2)	0.1 (0.1)	0.3 (0.3)	0.2 (0.2)
Male genitalia (C60-C63)	35.9 (28.6)	34.8 (26.7)	34.0 (27.5)	32.2 (26.6)	27.6 (24.2)	32.7 (26.7)
Urinary organs (C64-C68)	8.9 (7.1)	8.3 (6.4)	8.3 (6.7)	7.4 (6.1)	8.2 (7.2)	8.2 (6.7)
Eye, brain, and thyroid (C69-C75)	4.8 (3.8)	4.3 (3.3)	4.5 (3.7)	4.3 (3.5)	5.4 (4.7)	4.7 (3.8)
Hematopoietic (C81-C96)	12.2 (9.7)	12.1 (9.3)	10.4 (8.4)	12.2 (10.1)	9.6 (8.4)	11.3 (9.2)
Other and unspecified	6.5 (5.2)	8.0 (6.1)	7.2 (5.8)	7.7 (6.4)	5.8 (5.1)	7.0 (5.7)
All sites	125.5 (100.0)	130.4 (100.0)	123.5 (100.0)	121.0 (100.0)	113.7 (100.0)	122.6 (100.0)
FEMALES						
Lip, oral cavity, and pharynx (C00-C14)	1.6 (1.2)	1.2 (0.9)	1.4 (1.1)	1.0 (0.8)	1.2 (1.0)	1.3 (1.0)
Digestive organs (C15-C26)	14.5 (10.6)	15.1 (10.5)	11.4 (8.6)	13.2 (10.2)	13.6 (11.1)	13.5 (10.2)
Respiratory organs (C30-C39)	4.2 (3.1)	4.3 (3.0)	3.6 (2.7)	3.9 (3.0)	3.4 (2.8)	3.9 (2.9)
Bone, cartilage, and skin (C40-C44)	30.4 (22.1)	29.4 (20.4)	29.4 (22.1)	29.3 (22.6)	27.6 (22.4)	29.2 (21.9)
Breast (C50)	33.3 (24.2)	39.4 (27.3)	37.8 (28.5)	33.8 (26.1)	33.7 (27.3)	35.6 (26.7)
Female genitalia (C51-C58)	24.8 (18.1)	27.0 (18.7)	22.5 (16.9)	18.5 (14.3)	19.9 (16.1)	22.4 (16.8)
Urinary organs (C64-C68)	3.8 (2.7)	3.9 (2.7)	3.5 (2.6)	3.4 (2.6)	2.8 (2.3)	3.4 (2.6)
Eye, brain, and thyroid (C69-C75)	7.9 (5.7)	7.7 (5.4)	8.6 (6.4)	7.6 (5.9)	7.5 (6.1)	7.9 (5.9)
Hematopoietic (C81-C96)	9.7 (7.1)	9.1 (6.3)	8.3 (6.2)	10.4 (8.1)	7.8 (6.3)	9.0 (6.8)
Other and unspecified	7.2 (5.3)	7.1 (4.9)	6.4 (4.8)	8.1 (6.3)	5.8 (4.7)	6.9 (5.2)
All sites	137.4 (100.0)	144.3 (100.0)	132.8 (100.0)	129.3 (100.0)	123.3 (100.0)	133.1 (100.0)
BOTH SEXES						
Lip, oral cavity, and pharynx (C00-C14)	2.1 (1.6)	2.1 (1.5)	1.7 (1.3)	1.5 (1.2)	2.0 (1.7)	1.9 (1.5)
Digestive organs (C15-C26)	15.0 (11.4)	16.4 (12.0)	13.9 (10.9)	14.2 (11.4)	15.3 (13.0)	15.0 (11.7)
Respiratory organs (C30-C39)	6.4 (4.9)	6.6 (4.8)	5.7 (4.5)	6.5 (5.2)	5.6 (4.8)	6.2 (4.8)
Bone, cartilage, and skin (C40-C44)	30.2 (23.0)	30.7 (22.4)	30.6 (23.9)	29.5 (23.7)	28.0 (23.7)	29.8 (23.4)
Urinary organs (C64-C68)	6.1 (4.7)	5.9 (4.3)	5.7 (4.5)	5.2 (4.2)	5.3 (4.5)	5.6 (4.4)
Eye, brain, and thyroid (C69-C75)	6.4 (4.9)	6.1 (4.4)	6.6 (5.2)	6.1 (4.9)	6.5 (5.5)	6.3 (5.0)
Hematopoietic (C81-C96)	10.9 (8.3)	10.6 (7.7)	9.3 (7.3)	11.3 (9.0)	8.6 (7.3)	10.1 (7.9)
Other and unspecified	6.9 (5.2)	7.5 (5.5)	6.7 (5.3)	7.9 (6.4)	5.8 (4.9)	7.0 (5.5)
All sites	131.1 (100.0)	137.0 (100.0)	127.8 (100.0)	124.8 (100.0)	118.3 (100.0)	127.5 (100.0)

*Aggregated data from the histopathology-based cancer registry of the State of Jalisco

MEXICO* (2006-2010)
Incidence per 100,000 by Age Group (years)
Males

SITE	ALL CASES	UNK AGE	0-4	5-9	10-14	15-19	20-24	25-29	30-34	35-39	40-44	45-49	50-54	55-59	60-64	65-69	70-74	75+	CRUDE RATE	ASR (W)	CUM. RATE (0-74)†	MV (%)	DCO (%)	Rank‡	ICD10	
Lip, oral cavity, and pharynx (C00-14)	357	24	.	.	.	0.2	0.5	0.5	0.4	1.1	1.4	2.7	4.9	8.3	9.1	13.1	12.1	18.5	2.1	2.6	0.29	100	0	12	C00-14	
Oesophagus (C15)	146	10	0.1	.	.	0.2	0.8	1.5	1.7	2.8	4.3	7.0	5.6	8.4	0.9	1.1	0.13	100	0	18	C15	
Stomach (C16)	643	53	0.1	.	.	.	0.3	1.3	2.1	2.8	2.8	4.9	7.4	11.4	16.0	23.8	31.5	37.6	3.8	4.6	0.55	100	0	5	C16	
Colon (C18)	662	47	.	.	.	0.2	0.4	1.0	1.3	2.2	2.7	6.4	8.5	14.6	16.7	19.8	33.2	29.5	3.9	4.7	0.58	100	0		C18	
Rectum (C19-20)	365	35	.	.	0.1	.	0.1	0.4	0.7	1.5	1.9	2.3	4.9	6.7	8.7	13.4	15.9	17.7	2.1	2.6	0.31	100	0		C19-20	
Colorectal (C18-20)	1027	82	.	.	0.1	0.2	0.4	1.4	2.1	3.7	4.6	8.7	13.3	21.3	25.4	33.2	49.1	47.2	6.0	7.4	0.89	100	0	2	C18-20	
Anus (C21)	13	1	0.1	.	0.1	0.1	0.4	.	0.5	0.3	0.4	0.3	0.1	0.1	0.01	100	0	27	C21	
Colon, rectum and anus (C18-21)	1040	83	.	.	0.1	0.2	0.4	1.4	2.2	3.7	4.7	8.8	13.8	21.3	25.8	33.5	49.5	47.5	6.1	7.5	0.90	100	0		C18-21	
Liver (C22)	34	1	0.1	0.4	0.4	0.7	0.7	2.1	1.7	2.0	0.2	0.3	0.03	100	0	23	C22	
Gallbladder (C23-24)	139	17	0.1	0.3	0.2	0.7	0.9	1.4	1.4	2.0	4.8	4.6	7.8	6.9	0.8	1.0	0.13	100	0	19	C23-24	
Pancreas (C25)	182	6	0.1	0.2	0.8	2.2	2.8	2.8	5.0	5.9	6.7	10.3	6.7	1.1	1.4	0.18	100	0	16	C25	
Nose, sinuses (C30-31)	31	0	0.1	0.1	.	0.1	0.1	.	0.4	0.1	0.4	0.1	.	0.7	0.5	0.9	.	2.0	0.2	0.2	0.02	100	0	26	C30-31	
Larynx (C32)	306	12	0.2	0.1	0.5	0.6	1.8	3.5	4.8	4.8	10.3	17.1	15.9	20.8	1.8	2.3	0.28	100	0	13	C32	
Lung, trachea and bronchus (C33-34)	814	58	.	.	0.1	.	0.5	0.4	1.0	2.3	3.5	7.8	7.8	16.7	21.2	35.7	53.9	55.0	4.8	6.1	0.77	100	0	3	C33-34	
Melanoma of skin (C43)	301	24	.	0.2	0.1	0.1	0.1	0.3	1.0	1.2	2.4	2.8	3.3	4.4	7.1	8.5	8.2	16.5	1.8	2.1	0.22	100	0	14	C43	
Mesothelioma (C45)	31	4	.	.	.	0.1	.	0.1	.	0.1	0.2	0.2	0.4	0.4	0.7	1.2	0.4	1.7	0.2	0.2	0.02	100	0	24	C45	
Kaposi sarcoma (C46)	72	13	0.1	0.5	0.7	0.5	1.1	0.3	0.4	0.7	0.7	0.9	0.9	1.2	0.4	0.4	0.04	100	0	22	C46	
Breast (C50)	30	3	0.1	0.4	0.2	0.1	0.2	0.7	1.2	1.7	2.0	0.2	0.2	0.03	100	0	25	C50	
Penis (C60)	142	6	0.1	0.1	1.0	0.8	1.5	1.3	2.0	4.3	4.3	4.3	4.7	9.8	0.8	1.0	0.11	100	0	20	C60	
Prostate (C61)	3779	595	.	.	0.1	.	0.3	0.7	1.9	2.0	5.6	15.7	43.8	102.6	188.7	281.3	288.0	22.1	28.9	3.81	100	0	1	C61		
Testis (C62)	543	29	0.6	0.1	0.6	3.2	7.7	8.0	6.6	3.5	1.7	1.5	1.0	1.4	0.9	1.8	2.2	2.3	3.2	2.9	0.21	100	0	10	C62	
Kidney (C64)	466	28	1.2	0.3	0.2	0.1	0.2	0.4	0.4	1.3	2.1	4.7	5.8	9.4	12.1	17.4	25.9	14.2	2.7	3.4	0.43	100	0	9	C64	
Bladder (C67)	631	64	.	.	.	0.1	0.2	0.4	0.7	1.4	3.1	3.1	5.0	6.7	18.3	27.1	32.7	54.1	3.7	4.6	0.53	100	0	6	C67	
Brain, CNS (C70-72)	416	27	2.1	1.8	0.8	0.4	0.9	1.5	1.8	2.5	1.9	2.9	4.9	6.7	8.5	5.5	8.6	4.9	2.4	2.7	0.27	100	0	11	C70-72	
Thyroid (C73)	184	9	.	.	.	0.1	0.4	0.9	1.3	1.4	1.6	1.6	1.7	3.7	3.9	3.4	5.6	4.3	1.1	1.2	0.13	100	0	17	C73	
Hodgkin disease (C81)	231	21	0.2	0.6	1.0	1.3	1.6	1.5	1.0	1.2	0.8	1.5	1.4	1.4	1.6	3.0	3.9	3.8	1.3	1.4	0.12	100	0	15	C81	
Non-Hodgkin lymphoma (C82-85,C96)	775	65	1.4	1.6	1.1	1.1	1.6	2.8	2.1	3.1	4.0	5.7	7.8	9.8	12.6	19.8	26.7	29.2	4.5	5.2	0.55	100	0	4	C82-85,C96	
Multiple myeloma (C88+C90)	119	2	0.1	0.1	.	0.6	1.1	0.8	4.3	6.9	4.9	4.7	3.5	0.7	0.9	0.12	100	0	21	C88+C90	
Lymphoid leukaemia (C91)	385	10	5.8	3.2	3.0	1.6	1.7	0.8	1.0	0.7	0.4	0.7	1.4	1.8	2.1	1.8	2.6	8.1	2.2	2.4	0.15	100	0		C91	
Myeloid leukaemia (C92-94)	221	2	1.0	0.7	0.4	0.6	1.0	0.8	1.3	1.2	1.8	1.6	1.5	2.8	3.0	4.0	5.2	4.1	1.3	1.4	0.14	100	0		C92-94	
Leukaemia unspecified (C95)	3	0	0.1	0.1	0.2	0.0	0.0	0.0	0.00	100	0		C95
Leukaemia (C91-95)	609	12	6.9	3.8	3.5	2.2	2.8	1.6	2.4	2.0	2.2	2.2	2.9	4.8	5.0	5.8	7.8	12.2	3.6	3.8	0.28	100	0	8	C91-95	
Other and unspecified (O&U)	546	46	0.1	.	.	0.1	0.6	0.6	1.0	1.4	3.0	3.5	5.8	8.3	15.5	24.1	27.1	25.2	3.2	4.0	0.50	100	0	7	O&U	
All sites but C44 (ALLbC44)	13401	1276	14.8	10.2	9.4	12.0	19.4	23.8	28.3	35.6	43.5	71.1	109.2	193.0	316.4	476.3	651.9	703.3	78.2	95.2	11.13	100	0		ALLbC44	
All sites (ALL)	17205	1661	14.8	10.2	9.5	12.1	19.8	25.2	31.3	41.5	52.9	89.6	143.4	241.4	410.0	607.1	868.2	1036.1	100.4	122.6	14.26	100	0		ALL	

*Aggregated data from the histopathology-based cancer registry of the State of Jalisco
UNK, Unknown; ASR (W), Age Standardized Rate (World Population); CUM., Cumulative; MV, Microscopic Verification; DCO, Death Certificate Only
†Percent

‡Rank based on highest ASR excluding: All sites but C44 and All sites

MEXICO* (2006-2010)
Incidence per 100,000 by Age Group (years)
Females

SITE	ALL CASES	UNK AGE	0-4	5-9	10-14	15-19	20-24	25-29	30-34	35-39	40-44	45-49	50-54	55-59	60-64	65-69	70-74	75+	CRUDE RATE	ASR (W)	CUM. RATE (0-74)†	MV (%)	DCO (%)	Rank‡	ICD10
Lip, oral cavity, and pharynx (C00-14)	213	12	.	0.1	.	0.1	0.4	0.3	0.4	1.1	1.1	1.0	2.5	3.2	5.5	4.0	7.2	9.4	1.2	1.3	0.14	100	0	17	C00-14
Oesophagus (C15)	43	3	.	.	0.1	.	.	0.1	0.1	.	0.3	0.2	0.6	0.6	1.6	0.8	2.5	1.1	0.2	0.3	0.04	100	0	23	C15
Stomach (C16)	482	43	0.5	0.9	1.0	2.6	3.5	4.4	6.8	10.9	13.6	22.4	21.2	2.7	3.0	0.37	100	0	11	C16
Colon (C18)	671	52	.	0.1	.	0.1	0.1	0.5	1.7	2.8	4.1	6.1	7.9	9.7	15.4	17.8	25.3	22.7	3.8	4.2	0.50	100	0		C18
Rectum (C19-20)	311	28	0.5	0.9	0.9	1.3	2.3	3.4	5.5	8.1	8.8	9.0	11.8	1.8	1.9	0.22	100	0		C19-20
Colorectal (C18-20)	982	80	.	0.1	.	0.1	0.1	1.1	2.6	3.7	5.4	8.3	11.3	15.2	23.5	26.6	34.4	34.6	5.6	6.1	0.72	100	0	3	C18-20
Anus (C21)	18	1	0.1	.	0.2	0.1	0.3	0.4	0.8	0.7	0.9	0.1	0.1	0.01	100	0	26	C21
Colon, rectum and anus (C18-21)	1000	81	.	0.1	.	0.1	0.1	1.1	2.6	3.7	5.4	8.5	11.4	15.5	23.9	27.4	35.1	35.4	5.7	6.2	0.73	100	0		C18-21
Liver (C22)	47	3	0.1	0.2	.	0.1	0.2	0.8	0.6	1.2	1.9	1.4	2.2	0.3	0.3	0.03	100	0	21	C22
Gallbladder (C23-24)	316	27	.	.	.	0.2	0.2	0.1	0.3	0.6	0.7	1.0	2.8	6.2	7.1	12.8	15.9	14.4	1.8	2.0	0.26	100	0	13	C23-24
Pancreas (C25)	192	6	.	.	0.1	.	0.1	0.1	0.2	0.3	0.7	1.5	2.9	2.7	6.9	6.4	5.4	8.3	1.1	1.2	0.14	100	0	18	C25
Nose, sinuses (C30-31)	24	1	.	.	.	0.1	0.1	0.1	0.1	.	.	0.3	0.4	0.6	.	1.1	.	1.1	0.1	0.1	0.01	100	0	25	C30-31
Larynx (C32)	45	1	.	.	.	0.2	0.1	0.1	0.1	.	0.1	0.1	0.3	0.6	2.4	0.8	2.5	2.2	0.3	0.3	0.04	100	0	22	C32
Lung, trachea and bronchus (C33-34)	507	48	.	.	.	0.1	0.7	0.7	0.3	0.8	1.3	3.1	5.1	8.4	12.3	19.4	27.5	18.4	2.9	3.3	0.44	100	0	9	C33-34
Melanoma of skin (C43)	345	30	.	0.1	.	0.6	0.9	0.9	0.9	1.9	2.8	2.4	3.6	6.5	5.1	4.0	8.7	14.0	2.0	2.0	0.21	100	0	14	C43
Mesothelioma (C45)	25	4	.	.	.	0.1	0.3	0.6	0.8	0.3	1.4	1.1	0.1	0.2	0.02	100	0	24	C45
Kaposi sarcoma (C46)	9	0	0.2	0.2	.	0.1	.	.	.	0.4	0.7	0.1	0.0	0.00	100	0	27	C46
Breast (C50)	5819	635	.	.	.	1.4	4.5	4.5	15.9	35.7	61.1	78.4	89.4	105.4	107.1	101.2	102.4	84.2	32.9	35.6	3.94	100	0	1	C50
Cervix uteri (C53)	1850	62	.	.	.	1.2	3.4	3.4	8.5	14.9	17.2	26.1	29.3	29.3	37.4	31.6	25.3	36.1	10.5	11.0	1.16	100	0	2	C53
Corpus uteri (C54)	657	52	.	.	0.1	0.1	0.1	0.3	1.2	1.7	3.7	4.7	10.0	14.1	22.5	20.5	18.8	13.3	3.7	4.3	0.53	100	0	8	C54
Ovary (C56)	889	54	0.1	0.4	0.5	1.3	2.2	2.7	4.4	5.4	7.8	9.7	10.7	14.1	13.6	13.3	18.5	13.8	5.0	5.2	0.56	100	0	4	C56
Kidney (C64)	280	17	0.8	0.2	0.2	0.1	.	0.3	0.5	0.6	1.8	2.3	3.9	3.3	7.7	8.5	8.7	7.7	1.6	1.8	0.21	100	0	15	C64
Bladder (C67)	258	26	0.1	0.1	.	0.1	0.2	0.4	0.4	0.3	0.4	1.0	2.9	4.0	6.1	7.7	10.9	14.0	1.5	1.6	0.19	100	0	16	C67
Brain, CNS (C70-72)	413	29	1.7	2.0	1.3	0.9	0.7	1.1	1.3	2.3	2.2	2.9	2.6	5.4	6.9	5.6	8.7	5.0	2.3	2.5	0.24	100	0	12	C70-72
Thyroid (C73)	836	81	.	.	0.2	0.9	2.7	4.3	5.4	5.6	5.6	9.5	8.4	10.3	10.9	13.3	14.8	10.1	4.7	4.9	0.51	100	0	5	C73
Hodgkin disease (C81)	192	17	.	0.2	0.7	0.9	1.5	1.2	1.9	1.0	0.1	0.7	1.1	1.0	1.2	2.7	3.6	2.6	1.1	1.0	0.10	100	0	19	C81
Non-Hodgkin lymphoma (C82-85,C96)	704	69	1.2	0.4	0.7	0.8	1.5	1.4	1.7	1.4	3.0	5.0	7.8	8.6	15.0	16.7	21.7	21.6	4.0	4.4	0.48	100	0	7	C82-85,C96
Multiple myeloma (C88+C90)	96	7	.	.	0.1	.	0.1	0.1	0.1	0.2	0.4	0.9	1.3	1.7	2.8	3.2	2.9	2.8	0.5	0.6	0.07	100	0	20	C88+C90
Lymphoid leukaemia (C91)	310	9	5.5	3.3	2.8	1.3	0.6	0.5	0.6	0.5	0.3	1.0	1.3	0.6	1.6	2.1	1.1	2.0	1.8	1.9	0.12	100	0		C91
Myeloid leukaemia (C92-94)	188	2	0.9	0.6	0.8	0.7	0.8	0.7	0.9	0.8	1.2	1.3	1.8	1.6	2.2	1.3	2.9	3.1	1.1	1.1	0.09	100	0		C92-94
Leukaemia unspecified (C95)	1	0	0.1	0.0	0.0	0.00	100	0		C95
Leukaemia (C91-95)	499	11	6.4	4.0	3.6	2.0	1.4	1.2	1.5	1.3	1.5	2.4	3.1	2.2	3.8	3.5	4.0	5.0	2.8	3.0	0.21	100	0	10	C91-95
Other and unspecified (O&U)	727	89	.	.	.	0.2	0.6	0.6	1.4	2.3	3.8	6.1	7.8	11.4	17.6	19.7	20.6	24.5	4.1	4.5	0.52	100	0	6	O&U
All sites but C44 (ALLbC44)	17491	1501	12.6	8.5	9.7	10.6	17.1	27.4	53.3	86.2	129.8	179.4	221.8	277.2	348.5	357.4	412.3	395.6	99.0	106.9	11.77	100	0		ALLbC44
All sites (ALL)	21838	1922	12.6	8.5	9.8	10.8	17.6	29.2	57.7	92.8	142.2	198.7	258.3	325.5	440.2	480.9	604.9	694.1	123.6	133.1	14.75	100	0		ALL

*Aggregated data from the histopathology-based cancer registry of the State of Jalisco
UNK, Unknown; ASR (W), Age Standardized Rate (World Population); CUM., Cumulative; MV, Microscopic Verification; DCO, Death Certificate Only
†Percent

‡Rank based on highest ASR excluding: All sites but C44 and All sites

MEXICO (2006-2010)
Number of Deaths in Major Diagnosis Groups
per Calendar Year

SITE	YEAR					TOTAL n (%)
	2006 n (%)	2007 n (%)	2008 n (%)	2009 n (%)	2010 n (%)	
MALES						
Lip, oral cavity, and pharynx (C00-C14)	627 (2.0)	585 (1.9)	651 (2.0)	645 (2.0)	654 (1.9)	3162 (2.0)
Digestive organs (C15-C26)	9711 (31.2)	9531 (30.6)	10227 (31.1)	10164 (30.8)	10373 (30.6)	50006 (30.9)
Respiratory organs (C30-C39)	5224 (16.8)	4991 (16.0)	5152 (15.7)	4991 (15.1)	4977 (14.7)	25335 (15.6)
Bone, cartilage, and skin (C40-C44)	225 (0.7)	239 (0.8)	262 (0.8)	230 (0.7)	302 (0.9)	1258 (0.8)
Male genitalia (C60-C63)	5061 (16.2)	5226 (16.8)	5486 (16.7)	5563 (16.9)	5818 (17.2)	27154 (16.8)
Urinary organs (C64-C68)	1504 (4.8)	1566 (5.0)	1644 (5.0)	1550 (4.7)	1739 (5.1)	8003 (4.9)
Eye, brain, and thyroid (C69-C75)	1198 (3.8)	1185 (3.8)	1121 (3.4)	1219 (3.7)	1304 (3.9)	6027 (3.7)
Hematopoietic (C81-C96)	3695 (11.9)	3740 (12.0)	3945 (12.0)	3997 (12.1)	4018 (11.9)	19395 (12.0)
Other and unspecified	3902 (12.5)	4135 (13.3)	4352 (13.3)	4613 (14.0)	4685 (13.8)	21687 (13.4)
All sites	31147 (100.0)	31198 (100.0)	32840 (100.0)	32972 (100.0)	33870 (100.0)	162027 (100.0)
FEMALES						
Lip, oral cavity, and pharynx (C00-C14)	316 (1.0)	281 (0.9)	272 (0.8)	309 (0.9)	363 (1.0)	1541 (0.9)
Digestive organs (C15-C26)	10143 (30.9)	9973 (30.4)	10426 (30.6)	10204 (29.7)	10531 (29.9)	51277 (30.3)
Respiratory organs (C30-C39)	2406 (7.3)	2292 (7.0)	2364 (6.9)	2342 (6.8)	2430 (6.9)	11834 (7.0)
Bone, cartilage, and skin (C40-C44)	199 (0.6)	208 (0.6)	225 (0.7)	223 (0.6)	229 (0.7)	1084 (0.6)
Breast (C50)	4451 (13.5)	4518 (13.8)	4840 (14.2)	4805 (14.0)	4969 (14.1)	23583 (13.9)
Female genitalia (C51-C58)	6388 (19.4)	6156 (18.8)	6288 (18.5)	6473 (18.9)	6425 (18.3)	31730 (18.8)
Urinary organs (C64-C68)	924 (2.8)	1080 (3.3)	1069 (3.1)	969 (2.8)	1002 (2.8)	5044 (3.0)
Eye, brain, and thyroid (C69-C75)	1175 (3.6)	1158 (3.5)	1232 (3.6)	1225 (3.6)	1303 (3.7)	6093 (3.6)
Hematopoietic (C81-C96)	3128 (9.5)	3199 (9.8)	3272 (9.6)	3361 (9.8)	3408 (9.7)	16368 (9.7)
Other and unspecified	4050 (12.3)	4242 (12.9)	4340 (12.8)	4762 (13.9)	4857 (13.8)	22251 (13.1)
All sites	32855 (100.0)	32804 (100.0)	34034 (100.0)	34338 (100.0)	35192 (100.0)	169223 (100.0)
BOTH SEXES						
Lip, oral cavity, and pharynx (C00-C14)	943 (1.5)	866 (1.4)	923 (1.4)	954 (1.4)	1017 (1.5)	4703 (1.4)
Digestive organs (C15-C26)	19854 (31.0)	19504 (30.5)	20653 (30.9)	20368 (30.3)	20904 (30.3)	101283 (30.6)
Respiratory organs (C30-C39)	7630 (11.9)	7283 (11.4)	7516 (11.2)	7333 (10.9)	7407 (10.7)	37169 (11.2)
Bone, cartilage, and skin (C40-C44)	424 (0.7)	447 (0.7)	487 (0.7)	453 (0.7)	531 (0.8)	2342 (0.7)
Urinary organs (C64-C68)	2428 (3.8)	2646 (4.1)	2713 (4.1)	2519 (3.7)	2741 (4.0)	13047 (3.9)
Eye, brain, and thyroid (C69-C75)	2373 (3.7)	2343 (3.7)	2353 (3.5)	2444 (3.6)	2607 (3.8)	12120 (3.7)
Hematopoietic (C81-C96)	6823 (10.7)	6939 (10.8)	7217 (10.8)	7358 (10.9)	7426 (10.8)	35763 (10.8)
Other and unspecified	7952 (12.4)	8377 (13.1)	8692 (13.0)	9375 (13.9)	9542 (13.8)	43938 (13.3)
All sites	64002 (100.0)	64002 (100.0)	66874 (100.0)	67310 (100.0)	69062 (100.0)	331250 (100.0)

MEXICO (2006-2010)
Age Standardized Mortality Rate (World Population) per 100,000
in Major Diagnosis Groups per Calendar Year

SITE	YEAR					TOTAL ASMR (%)
	2006 ASMR (%)	2007 ASMR (%)	2008 ASMR (%)	2009 ASMR (%)	2010 ASMR (%)	
MALES						
Lip, oral cavity, and pharynx (C00-C14)	1.9 (2.0)	1.7 (1.9)	1.9 (2.0)	1.8 (2.0)	1.8 (1.9)	1.8 (1.9)
Digestive organs (C15-C26)	30.1 (31.6)	28.6 (30.9)	29.9 (31.4)	28.8 (31.1)	28.4 (30.7)	29.1 (31.1)
Respiratory organs (C30-C39)	16.7 (17.6)	15.5 (16.8)	15.6 (16.4)	14.7 (15.8)	14.2 (15.3)	15.3 (16.4)
Bone, cartilage, and skin (C40-C44)	0.7 (0.7)	0.7 (0.7)	0.7 (0.8)	0.6 (0.7)	0.8 (0.9)	0.7 (0.8)
Male genitalia (C60-C63)	17.6 (18.5)	17.6 (19.0)	18.0 (18.9)	17.7 (19.1)	18.0 (19.5)	17.8 (19.0)
Urinary organs (C64-C68)	4.7 (4.9)	4.7 (5.1)	4.8 (5.1)	4.4 (4.8)	4.8 (5.2)	4.7 (5.0)
Eye, brain, and thyroid (C69-C75)	3.1 (3.2)	3.0 (3.2)	2.7 (2.9)	2.9 (3.2)	3.0 (3.3)	3.0 (3.2)
Hematopoietic (C81-C96)	9.2 (9.7)	9.2 (10.0)	9.5 (10.0)	9.4 (10.1)	9.3 (10.0)	9.3 (10.0)
Other and unspecified	11.2 (11.8)	11.5 (12.5)	12.0 (12.6)	12.3 (13.3)	12.2 (13.2)	11.8 (12.7)
All sites	95.0 (100.0)	92.7 (100.0)	95.2 (100.0)	92.5 (100.0)	92.5 (100.0)	93.5 (100.0)
FEMALES						
Lip, oral cavity, and pharynx (C00-C14)	0.8 (1.0)	0.7 (0.9)	0.6 (0.8)	0.7 (0.9)	0.8 (1.1)	0.7 (1.0)
Digestive organs (C15-C26)	25.7 (32.7)	24.5 (32.1)	24.8 (32.3)	23.5 (31.3)	23.7 (31.6)	24.4 (32.0)
Respiratory organs (C30-C39)	6.1 (7.8)	5.7 (7.5)	5.7 (7.4)	5.5 (7.3)	5.5 (7.4)	5.7 (7.5)
Bone, cartilage, and skin (C40-C44)	0.5 (0.6)	0.5 (0.6)	0.5 (0.7)	0.5 (0.7)	0.5 (0.7)	0.5 (0.6)
Breast (C50)	9.9 (12.6)	9.8 (12.9)	10.2 (13.3)	9.8 (13.1)	9.9 (13.2)	9.9 (13.0)
Female genitalia (C51-C58)	14.6 (18.6)	13.8 (18.1)	13.6 (17.8)	13.5 (18.0)	13.0 (17.4)	13.7 (18.0)
Urinary organs (C64-C68)	2.3 (2.9)	2.6 (3.5)	2.5 (3.3)	2.3 (3.0)	2.3 (3.0)	2.4 (3.1)
Eye, brain, and thyroid (C69-C75)	2.7 (3.5)	2.6 (3.4)	2.7 (3.5)	2.6 (3.4)	2.7 (3.6)	2.7 (3.5)
Hematopoietic (C81-C96)	6.9 (8.7)	6.8 (8.9)	6.8 (8.9)	6.8 (9.1)	6.8 (9.1)	6.8 (9.0)
Other and unspecified	9.8 (12.4)	10.0 (13.1)	9.8 (12.8)	10.5 (14.0)	10.4 (13.9)	10.1 (13.3)
All sites	78.6 (100.0)	76.3 (100.0)	76.7 (100.0)	75.1 (100.0)	74.9 (100.0)	76.2 (100.0)
BOTH SEXES						
Lip, oral cavity, and pharynx (C00-C14)	1.3 (1.5)	1.2 (1.4)	1.2 (1.4)	1.2 (1.4)	1.2 (1.5)	1.2 (1.4)
Digestive organs (C15-C26)	27.7 (32.3)	26.3 (31.6)	27.1 (31.9)	25.9 (31.3)	25.8 (31.2)	26.5 (31.6)
Respiratory organs (C30-C39)	10.8 (12.6)	10.1 (12.1)	10.1 (11.9)	9.6 (11.6)	9.4 (11.3)	10.0 (11.9)
Bone, cartilage, and skin (C40-C44)	0.6 (0.7)	0.6 (0.7)	0.6 (0.7)	0.6 (0.7)	0.6 (0.8)	0.6 (0.7)
Urinary organs (C64-C68)	3.4 (3.9)	3.6 (4.3)	3.6 (4.2)	3.2 (3.9)	3.4 (4.1)	3.4 (4.1)
Eye, brain, and thyroid (C69-C75)	2.9 (3.4)	2.8 (3.3)	2.7 (3.2)	2.7 (3.3)	2.9 (3.5)	2.8 (3.3)
Hematopoietic (C81-C96)	7.9 (9.3)	7.9 (9.5)	8.1 (9.5)	8.0 (9.7)	7.9 (9.6)	8.0 (9.5)
Other and unspecified	10.4 (12.1)	10.7 (12.8)	10.8 (12.7)	11.3 (13.7)	11.2 (13.6)	10.9 (13.0)
All sites	85.7 (100.0)	83.4 (100.0)	84.7 (100.0)	82.7 (100.0)	82.6 (100.0)	83.7 (100.0)

MEXICO (2006-2010)
Mortality per 100,000 by Age Group (years)
Males

SITE	ALL DEATHS	UNK AGE	0-4	5-9	10-14	15-19	20-24	25-29	30-34	35-39	40-44	45-49	50-54	55-59	60-64	65-69	70-74	75+	CRUDE RATE	ASMR (W)	CUM. RATE (0-74)†	Rank‡	ICD10
Lip, oral cavity, & pharynx (C00-14)	3162	0	0.0	0.0	0.0	0.1	0.1	0.1	0.2	0.3	0.8	1.3	2.1	3.7	5.3	7.7	10.7	36.3	1.1	1.8	0.2	14	C00-14
Oesophagus (C15)	3328	2	0.0	0.0	0.0	0.0	0.1	0.1	0.1	0.3	0.5	1.2	2.0	3.3	5.8	9.9	12.8	40.6	1.2	2.0	0.2	12	C15
Stomach (C16)	14474	8	0.0	0.0	0.0	0.1	0.2	0.6	1.1	2.2	3.9	5.7	9.0	13.7	21.9	34.5	50.0	180.4	5.2	8.4	0.7	4	C16
Colon (C18)	7712	5	0.0	0.0	0.0	0.1	0.2	0.4	0.7	1.2	2.1	3.4	5.2	8.0	13.1	17.9	25.7	85.0	2.8	4.4	0.4		C18
Rectum (C19-C20)	0	0																	0.0	0.0	0.0		C19-C20
Colorectal (C18-20)	0	0																	0.0	0.0	0.0	24	C18-20
Anus (C21)	0	0																	0.0	0.0	0.0	24	C21
Colon, rectum and anus (C18-21)	9654	5	0.0	0.0	0.0	0.1	0.3	0.5	0.9	1.5	2.7	4.4	6.5	10.2	16.4	22.2	33.2	103.7	3.5	5.4	0.5		C18-21
Liver (C22)	11866	18	0.3	0.1	0.1	0.1	0.2	0.2	0.3	0.7	1.5	3.1	5.5	10.5	18.2	33.4	50.2	161.4	4.3	7.1	0.6	5	C22
Gallbladder (C23-24)	2496	3	0.0	0.0	0.0	0.0	0.0	0.0	0.0	0.1	0.4	0.7	1.3	2.3	3.7	6.4	10.5	36.4	0.9	1.5	0.1	15	C23-24
Pancreas (C25)	8188	9	0.0	0.0	0.0	0.1	0.2	0.2	0.6	1.4	3.2	5.5	9.1	15.0	23.0	32.0	90.8	2.9	4.7	0.5	6	C25	
Nose, sinuses (C30-31)	0	0																	0.0	0.0	0.0	24	C30-31
Larynx (C32)	3460	4	0.0	0.0	0.0	0.0	0.0	0.0	0.0	0.1	0.3	0.8	1.8	3.2	6.0	9.5	15.1	48.4	1.2	2.1	0.2	11	C32
Lung (C33-34)	21875	22	0.0	0.0	0.0	0.1	0.2	0.4	0.6	1.1	2.3	4.9	9.3	18.5	35.6	60.2	105.0	302.3	7.9	13.2	1.2	2	C33-34
Melanoma of skin (C43)	1258	0	0.0	0.0	0.0	0.0	0.0	0.1	0.1	0.2	0.4	0.6	1.0	1.3	1.6	3.1	3.9	14.2	0.5	0.7	0.1	18	C43
Mesothelioma (C45)	0	0																	0.0	0.0	0.0	24	C45
Kaposi sarcoma (C46)	0	0																	0.0	0.0	0.0	24	C46
Breast (C50)	0	0																	0.0	0.0	0.0	24	C50
Penis (C60)	0	0																	0.0	0.0	0.0	24	C60
Prostate (C61)	25186	20	0.0	0.0	0.0	0.0	0.0	0.0	0.0	0.1	0.3	0.9	2.9	8.1	21.6	48.4	102.3	605.7	9.1	17.0	0.9	1	C61
Testis (C62)	1968	1	0.0	0.0	0.0	0.7	1.6	1.7	1.2	0.8	0.7	0.5	0.4	0.5	0.6	0.6	0.9	5.5	0.7	0.7	0.1	17	C62
Kidney (C64)	5081	2	0.2	0.1	0.0	0.1	0.1	0.1	0.2	0.4	1.1	2.3	4.1	6.9	10.2	12.7	17.3	46.9	1.8	2.8	0.3	9	C64
Bladder (C67)	2922	2	0.0	0.0	0.0	0.0	0.0	0.0	0.1	0.1	0.3	0.6	1.1	2.1	3.7	6.8	10.8	53.1	1.1	1.8	0.1	13	C67
Brain, CNS (C70-72)	5223	2	0.7	0.9	0.5	0.5	0.5	0.7	1.0	1.4	2.0	2.7	3.7	5.4	7.4	9.5	12.1	24.7	1.9	2.5	0.2	10	C70-72
Thyroid (C73)	804	1	0.0	0.0	0.0	0.0	0.0	0.0	0.0	0.1	0.2	0.2	0.6	0.8	1.4	2.4	3.4	8.3	0.3	0.5	0.0	20	C73
Hodgkin disease (C81)	1338	0	0.0	0.1	0.1	0.2	0.3	0.4	0.3	0.3	0.4	0.6	0.9	1.0	1.5	2.3	2.6	10.1	0.5	0.7	0.1	19	C81
Non-Hodgkin lymphoma (C82-85,C96)	5822	0	0.2	0.3	0.4	0.5	0.7	0.8	1.0	1.3	1.7	2.4	3.8	5.1	8.3	11.5	17.6	48.4	2.1	3.0	0.3	8	C82-85,C96
Multiple myeloma (C88+C90)	2191	1	0.0	0.0	0.0	0.0	0.0	0.0	0.1	0.2	0.5	0.9	1.9	3.2	4.6	6.3	7.4	19.1	0.8	1.2	0.1	16	C88+C90
Lymphoid leukaemia (C91)	0	0																	0.0	0.0	0.0		C91
Myeloid leukaemia (C92-94)	0	0																	0.0	0.0	0.0		C92-94
Leukaemia unspecified (C95)	0	0																	0.0	0.0	0.0		C95
Leukaemia (C91-95)	10044	6	2.2	2.5	2.7	3.7	2.7	2.2	2.2	2.3	3.0	3.2	4.1	4.7	6.5	9.9	14.9	51.3	3.6	4.4	0.3	7	C91-95
Other and unspecified (O&U)	21687	14	0.9	0.7	0.9	1.7	2.0	2.3	3.0	3.7	5.6	8.3	12.9	18.6	29.7	44.5	65.8	231.5	7.8	11.8	1.0	3	O&U
All sites (ALL)	162027	120	4.6	4.7	4.8	8.0	9.2	10.3	12.8	17.8	29.6	48.5	80.5	132.1	224.9	364.8	578.5	2119.0	58.4	93.5	7.7		ALL

UNK, Unknown; ASMR (W), Age Standardized Mortality Rate (World Population); CUM., Cumulative

†Percent

‡Rank based on highest ASMR excluding: All sites but C44

MEXICO (2006-2010)
Mortality per 100,000 by Age Group (years)
Females

SITE	ALL DEATHS	UNK AGE	0-4	5-9	10-14	15-19	20-24	25-29	30-34	35-39	40-44	45-49	50-54	55-59	60-64	65-69	70-74	75+	CRUDE RATE	ASMR (W)	CUM. RATE (0-74)†	Rank‡	ICD10
Lip, oral cavity, & pharynx (C00-14)	1541	0	0.0	0.0	0.0	0.1	0.1	0.1	0.1	0.2	0.3	0.5	0.8	1.2	1.9	2.4	3.8	16.5	0.5	0.7	0.1	18	C00-14
Oesophagus (C15)	1213	0	0.0	0.0	0.0	0.0	0.0	0.0	0.0	0.1	0.1	0.3	0.6	0.8	1.6	2.4	3.7	14.2	0.4	0.6	0.0	19	C15
Stomach (C16)	12509	9	0.0	0.0	0.0	0.1	0.2	0.5	1.0	1.8	3.0	5.2	7.1	10.0	15.1	20.4	33.6	122.6	4.2	5.8	0.5	5	C16
Colon (C18)	7425	9	0.0	0.0	0.0	0.1	0.1	0.4	0.6	0.9	1.4	2.5	4.1	5.9	9.5	12.6	20.9	74.7	2.5	3.5	0.3		C18
Rectum (C19-C20)	0	0	0.0	0.0	0.0		C19-C20
Colorectal (C18-20)	0	0	0.0	0.0	0.0	25	C18-20
Anus (C21)	0	0	0.0	0.0	0.0	25	C21
Colon, rectum and anus (C18-21)	9107	11	0.0	0.0	0.0	0.1	0.2	0.4	0.7	1.1	1.9	3.2	5.1	7.2	11.5	15.4	25.6	89.7	3.1	4.3	0.4		C18-21
Liver (C22)	13495	10	0.2	0.1	0.1	0.1	0.1	0.2	0.3	0.6	1.4	3.2	6.5	10.6	18.4	30.3	43.8	141.9	4.5	6.5	0.6	4	C22
Gallbladder (C23-24)	5754	4	0.0	0.0	0.0	0.0	0.0	0.0	0.1	0.2	0.7	1.7	3.3	4.9	8.9	12.7	19.1	56.1	1.9	2.8	0.3	10	C23-24
Pancreas (C25)	9199	10	0.0	0.0	0.0	0.0	0.0	0.1	0.2	0.4	1.1	2.3	4.6	7.7	13.5	19.9	30.1	94.4	3.1	4.4	0.4	7	C25
Nose, sinuses (C30-31)	0	0	0.0	0.0	0.0	25	C30-31
Larynx (C32)	536	0	0.0	0.0	0.0	0.0	0.0	0.0	0.0	0.0	0.0	0.1	0.2	0.3	0.7	1.1	2.1	6.2	0.2	0.3	0.0	22	C32
Lung (C33-34)	11298	6	0.0	0.0	0.0	0.1	0.1	0.2	0.4	0.9	1.5	3.2	5.2	8.4	14.6	23.4	38.1	119.3	3.8	5.4	0.5	6	C33-34
Melanoma of skin (C43)	1084	1	0.0	0.0	0.0	0.0	0.0	0.1	0.1	0.2	0.4	0.5	0.5	0.8	1.4	1.5	2.6	10.0	0.4	0.5	0.0	20	C43
Mesothelioma (C45)	0	0	0.0	0.0	0.0	25	C45
Kaposi sarcoma (C46)	0	0	0.0	0.0	0.0	25	C46
Breast (C50)	23583	14	0.0	0.0	0.0	0.1	0.8	2.8	5.8	11.0	17.9	23.7	29.3	29.3	30.9	32.4	38.0	113.8	7.9	9.9	1.0	2	C50
Cervix uteri (C53)	21428	19	0.0	0.0	0.0	0.2	1.0	2.7	5.0	9.5	14.7	18.5	21.3	21.3	27.3	32.1	43.2	124.8	7.2	9.2	0.9	3	C53
Corpus uteri (C54)	1818	1	0.0	0.0	0.0	0.0	0.0	0.0	0.1	0.1	0.4	0.7	1.2	2.0	3.7	4.3	5.2	11.7	0.6	0.8	0.1	17	C54
Ovary (C56)	8484	3	0.0	0.0	0.1	0.2	0.3	0.5	0.8	1.5	3.0	5.2	7.4	9.9	12.2	14.2	18.2	43.7	2.9	3.7	0.4	8	C56
Kidney (C64)	3317	1	0.2	0.2	0.1	0.1	0.0	0.0	0.1	0.3	0.6	1.3	2.2	2.8	4.8	6.5	10.1	26.2	1.1	1.5	0.1	13	C64
Bladder (C67)	1727	2	0.0	0.0	0.0	0.0	0.0	0.0	0.0	0.1	0.1	0.5	0.8	1.0	2.0	2.9	4.8	23.8	0.6	0.9	0.1	15	C67
Brain, CNS (C70-72)	4194	2	0.5	0.8	0.5	0.4	0.4	0.4	0.6	0.7	1.1	1.8	2.2	3.7	4.8	6.5	8.3	18.7	1.4	1.7	0.2	12	C70-72
Thyroid (C73)	1899	2	0.0	0.0	0.0	0.0	0.0	0.1	0.1	0.1	0.2	0.6	1.0	1.5	2.9	3.8	5.8	19.6	0.6	0.9	0.1	14	C73
Hodgkin disease (C81)	936	0	0.0	0.0	0.0	0.1	0.2	0.2	0.2	0.2	0.2	0.3	0.4	0.6	0.9	1.3	2.3	6.7	0.3	0.4	0.0	21	C81
Non-Hodgkin lymphoma (C82-85,C96)	4752	0	0.2	0.1	0.2	0.3	0.5	0.5	0.6	0.7	1.0	1.6	2.5	3.7	6.0	8.2	11.9	36.2	1.6	2.1	0.2	11	C82-85,C96
Multiple myeloma (C88+C90)	1846	0	0.0	0.0	0.0	0.0	0.0	0.0	0.0	0.1	0.3	0.6	1.3	2.3	3.4	4.5	5.5	13.0	0.6	0.9	0.1	16	C88+C90
Lymphoid leukaemia (C91)	0	0	0.0	0.0	0.0		C91
Myeloid leukaemia (C92-94)	0	0	0.0	0.0	0.0		C92-94
Leukaemia unspecified (C95)	0	0	0.0	0.0	0.0		C95
Leukaemia (C91-95)	8834	2	2.0	2.2	2.1	2.3	1.9	1.7	1.8	2.0	2.3	2.9	3.4	4.8	6.3	8.1	11.2	34.0	3.0	3.4	0.3	9	C91-95
Other and unspecified (O&U)	22251	11	0.8	0.6	0.9	1.2	1.1	1.5	2.1	2.8	4.9	8.6	12.7	17.4	26.4	35.7	53.3	195.8	7.5	10.1	0.9	1	O&U
All sites (ALL)	169223	105	4.1	4.0	4.0	5.1	5.6	8.5	14.6	24.6	44.3	75.8	109.9	150.8	217.3	287.7	416.7	1328.7	56.9	76.2	6.9		ALL

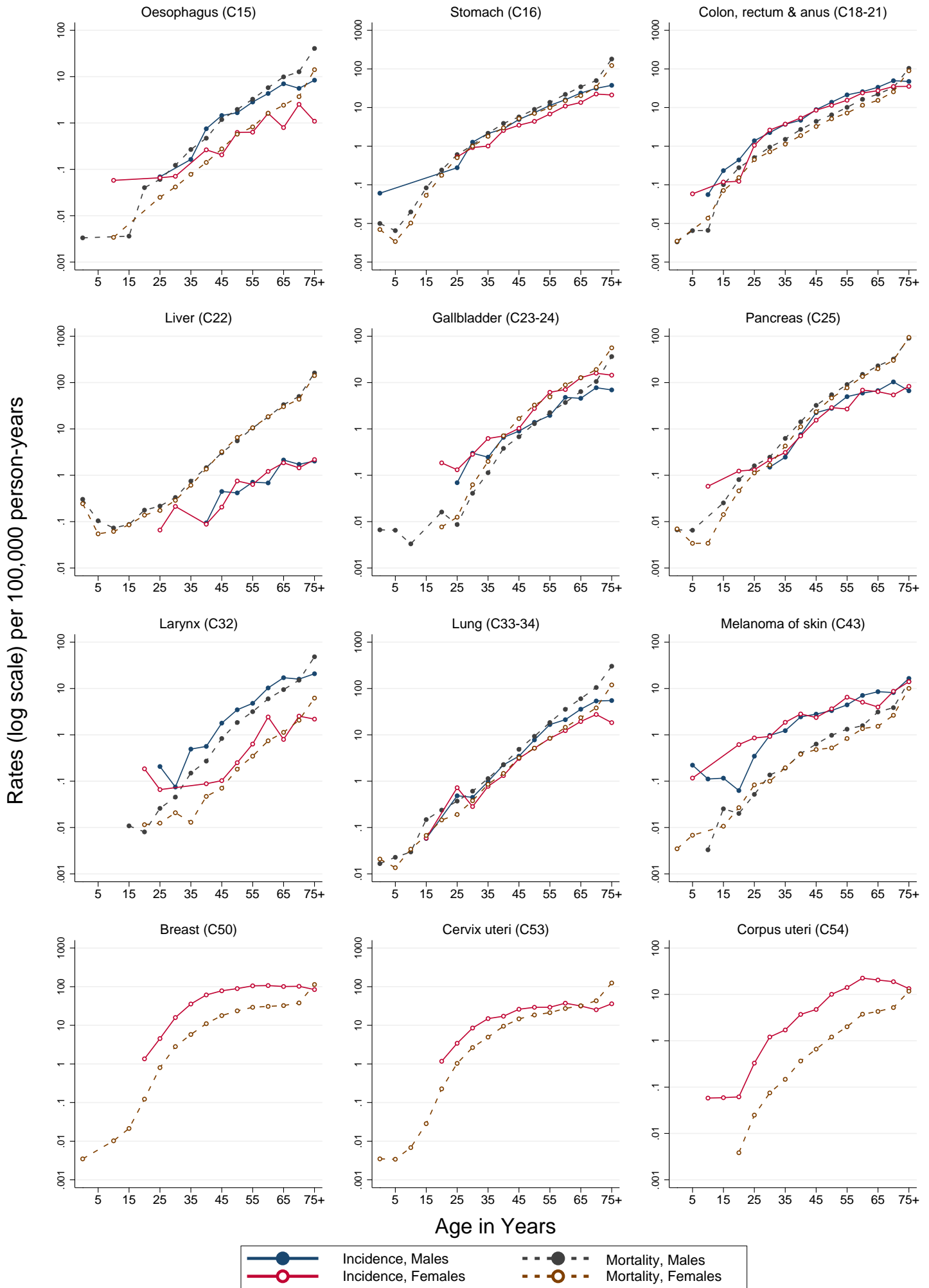
UNK, Unknown; ASMR (W), Age Standardized Mortality Rate (World Population); CUM., Cumulative

†Percent

‡Rank based on highest ASMR excluding: All sites but C44

MEXICO (2006-2010)

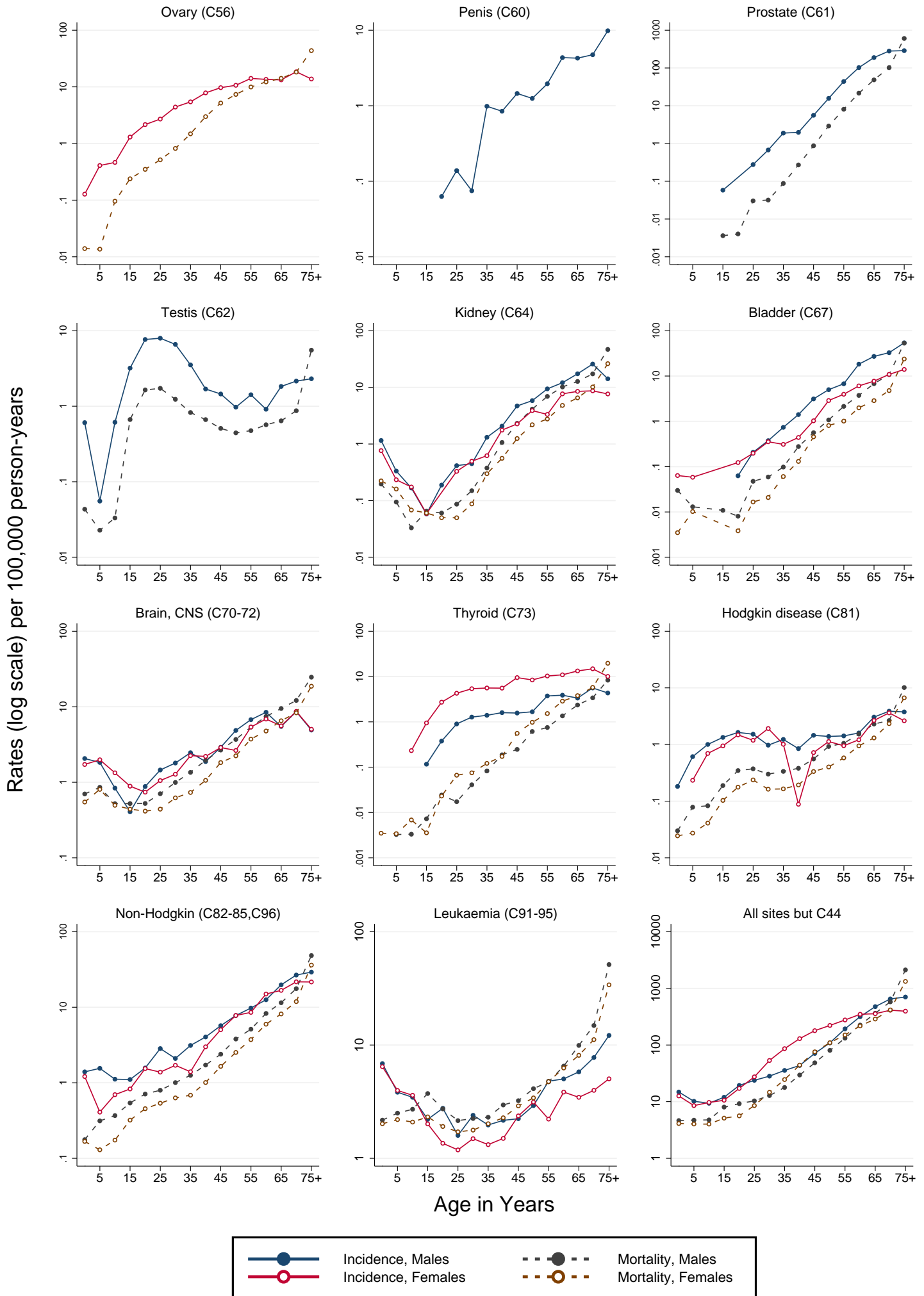
Age-specific incidence* and mortality rates per 100,000 person-years



*Data from the histopathology-based cancer registry of Jalisco

MEXICO (2006-2010)

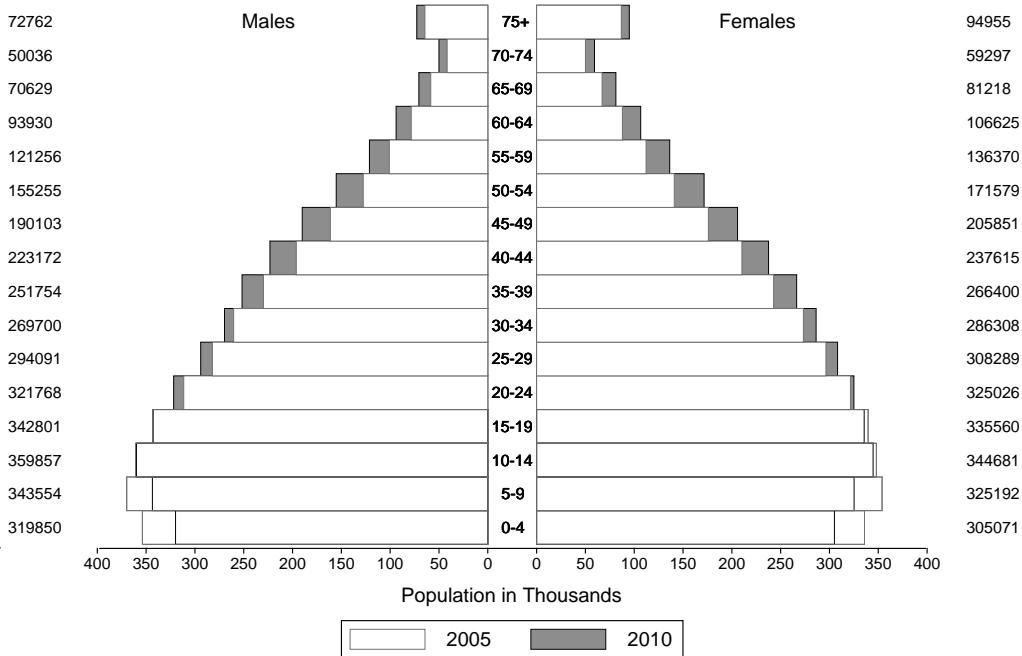
Age-specific incidence* and mortality rates per 100,000 person-years



*Data from the histopathology-based cancer registry of Jalisco

MEXICO* (2005-2010)

Average annual person-years



*Aggregated population from Jalisco