

Cancer in Central and South America

VENEZUELA

This country profile for the Cancer in Central and South America project provides, for each participating cancer registry tables and graphics showing numbers of cases and rates by year, sex and age group for major sites of cancer together with a population pyramid. A country summary is also provided based on aggregated registry data and national mortality data from the WHO mortality database:

(http://www.who.int/healthinfo/statistics/mortality_rawdata/en/index.html)

Citation of any of these data should be in the following format:

“Sierra MS, Abriata MG, Barrios E, Bravo LE, Cueva P, Fernandez L, Pineros M, Rebelo M, de Vries E, Forman D. Editors on behalf of the Cancer in Central and South America Working Group (2016). Cancer in Central and South America. Lyon: International Agency for Research on Cancer. Available from: http://www-dep.iarc.fr/CSU_resources.htm accessed [date].”

Country's Summary Tables and Figures

VENEZUELA^{1,2}

(2003-2007)

¹ No incidence data available

² National mortality data obtained from the WHO mortality database:
http://www.who.int/healthinfo/statistics/mortality_rawdata/en/index.html

VENEZUELA (2003-2007)
Number of Deaths in Major Diagnosis Groups
per Calendar Year

SITE	YEAR					TOTAL n (%)
	2003 n (%)	2004 n (%)	2005 n (%)	2006 n (%)	2007 n (%)	
MALES						
Lip, oral cavity, and pharynx (C00-C14)	237 (2.8)	210 (2.4)	213 (2.3)	209 (2.2)	256 (2.6)	1125 (2.4)
Digestive organs (C15-C26)	3014 (35.0)	3084 (34.7)	3216 (35.2)	3421 (36.1)	3586 (36.1)	16321 (35.4)
Respiratory organs (C30-C39)	1852 (21.5)	1905 (21.4)	1919 (21.0)	2025 (21.4)	2116 (21.3)	9817 (21.3)
Bone, cartilage, and skin (C40-C44)	52 (0.6)	48 (0.5)	54 (0.6)	51 (0.5)	46 (0.5)	251 (0.5)
Male genitalia (C60-C63)	1726 (20.0)	1748 (19.7)	1812 (19.8)	1883 (19.9)	1907 (19.2)	9076 (19.7)
Urinary organs (C64-C68)	311 (3.6)	329 (3.7)	351 (3.8)	328 (3.5)	388 (3.9)	1707 (3.7)
Eye, brain, and thyroid (C69-C75)	238 (2.8)	230 (2.6)	232 (2.5)	282 (3.0)	283 (2.8)	1265 (2.7)
Hematopoietic (C81-C96)	861 (10.0)	928 (10.4)	920 (10.1)	926 (9.8)	946 (9.5)	4581 (9.9)
All sites	8617 (100.0)	8883 (100.0)	9139 (100.0)	9478 (100.0)	9938 (100.0)	46055 (100.0)
FEMALES						
Lip, oral cavity, and pharynx (C00-C14)	116 (1.3)	108 (1.2)	99 (1.1)	122 (1.3)	113 (1.2)	558 (1.2)
Digestive organs (C15-C26)	2859 (33.0)	2886 (33.2)	2847 (31.3)	2914 (31.8)	3102 (33.1)	14608 (32.5)
Respiratory organs (C30-C39)	974 (11.2)	1022 (11.8)	1069 (11.8)	1046 (11.4)	1206 (12.9)	5317 (11.8)
Bone, cartilage, and skin (C40-C44)	44 (0.5)	37 (0.4)	40 (0.4)	52 (0.6)	35 (0.4)	208 (0.5)
Breast (C50)	1320 (15.2)	1375 (15.8)	1425 (15.7)	1415 (15.5)	1463 (15.6)	6998 (15.6)
Female genitalia (C51-C58)	1992 (23.0)	1936 (22.3)	2094 (23.0)	2077 (22.7)	2085 (22.2)	10184 (22.6)
Urinary organs (C64-C68)	197 (2.3)	178 (2.0)	187 (2.1)	227 (2.5)	212 (2.3)	1001 (2.2)
Eye, brain, and thyroid (C69-C75)	237 (2.7)	213 (2.5)	270 (3.0)	259 (2.8)	277 (3.0)	1256 (2.8)
Hematopoietic (C81-C96)	753 (8.7)	772 (8.9)	775 (8.5)	795 (8.7)	750 (8.0)	3845 (8.5)
All sites	8674 (100.0)	8685 (100.0)	9088 (100.0)	9152 (100.0)	9381 (100.0)	44980 (100.0)
BOTH SEXES						
Lip, oral cavity, and pharynx (C00-C14)	353 (2.0)	318 (1.8)	312 (1.7)	331 (1.8)	369 (1.9)	1683 (1.8)
Digestive organs (C15-C26)	5873 (34.0)	5970 (34.0)	6063 (33.3)	6335 (34.0)	6688 (34.6)	30929 (34.0)
Respiratory organs (C30-C39)	2826 (16.3)	2927 (16.7)	2988 (16.4)	3071 (16.5)	3322 (17.2)	15134 (16.6)
Bone, cartilage, and skin (C40-C44)	96 (0.6)	85 (0.5)	94 (0.5)	103 (0.6)	81 (0.4)	459 (0.5)
Urinary organs (C64-C68)	508 (2.9)	507 (2.9)	538 (3.0)	555 (3.0)	600 (3.1)	2708 (3.0)
Eye, brain, and thyroid (C69-C75)	475 (2.7)	443 (2.5)	502 (2.8)	541 (2.9)	560 (2.9)	2521 (2.8)
Hematopoietic (C81-C96)	1614 (9.3)	1700 (9.7)	1695 (9.3)	1721 (9.2)	1696 (8.8)	8426 (9.3)
All sites	17291 (100.0)	17568 (100.0)	18227 (100.0)	18630 (100.0)	19319 (100.0)	91035 (100.0)

VENEZUELA (2003-2007)
Age Standardized Mortality Rate (World Population) per 100,000
in Major Diagnosis Groups per Calendar Year

SITE	YEAR					TOTAL ASMR (%)
	2003 ASMR (%)	2004 ASMR (%)	2005 ASMR (%)	2006 ASMR (%)	2007 ASMR (%)	
MALES						
Lip, oral cavity, and pharynx (C00-C14)	2.6 (2.8)	2.2 (2.4)	2.2 (2.3)	2.0 (2.2)	2.4 (2.6)	2.3 (2.5)
Digestive organs (C15-C26)	33.6 (35.5)	32.9 (35.2)	32.8 (35.5)	33.5 (36.5)	34.0 (36.6)	33.4 (35.9)
Respiratory organs (C30-C39)	20.9 (22.1)	20.6 (22.0)	20.0 (21.6)	20.0 (21.8)	20.4 (21.9)	20.3 (21.9)
Bone, cartilage, and skin (C40-C44)	0.6 (0.6)	0.5 (0.5)	0.5 (0.6)	0.5 (0.5)	0.4 (0.5)	0.5 (0.5)
Male genitalia (C60-C63)	19.9 (21.0)	19.2 (20.6)	19.0 (20.6)	19.0 (20.6)	18.3 (19.7)	19.1 (20.5)
Urinary organs (C64-C68)	3.5 (3.7)	3.5 (3.8)	3.6 (3.9)	3.2 (3.5)	3.7 (4.0)	3.5 (3.8)
Eye, brain, and thyroid (C69-C75)	2.3 (2.4)	2.2 (2.3)	2.2 (2.3)	2.5 (2.8)	2.5 (2.7)	2.3 (2.5)
Hematopoietic (C81-C96)	8.3 (8.8)	8.6 (9.2)	8.3 (9.0)	8.2 (8.9)	8.1 (8.7)	8.3 (8.9)
All sites	94.5 (100.0)	93.5 (100.0)	92.4 (100.0)	91.9 (100.0)	93.1 (100.0)	93.0 (100.0)
FEMALES						
Lip, oral cavity, and pharynx (C00-C14)	1.1 (1.3)	1.0 (1.3)	0.9 (1.1)	1.0 (1.3)	0.9 (1.2)	1.0 (1.2)
Digestive organs (C15-C26)	27.6 (33.5)	26.8 (33.6)	25.5 (31.7)	24.9 (32.1)	25.6 (33.3)	26.0 (32.8)
Respiratory organs (C30-C39)	9.6 (11.7)	9.7 (12.2)	9.8 (12.2)	9.2 (11.8)	10.2 (13.3)	9.7 (12.3)
Bone, cartilage, and skin (C40-C44)	0.4 (0.5)	0.3 (0.4)	0.3 (0.4)	0.4 (0.6)	0.3 (0.4)	0.4 (0.4)
Breast (C50)	12.5 (15.2)	12.6 (15.8)	12.6 (15.7)	11.9 (15.4)	12.1 (15.7)	12.3 (15.6)
Female genitalia (C51-C58)	18.7 (22.7)	17.6 (22.1)	18.3 (22.8)	17.3 (22.3)	16.8 (21.9)	17.7 (22.3)
Urinary organs (C64-C68)	1.9 (2.3)	1.6 (2.1)	1.6 (2.1)	1.9 (2.5)	1.7 (2.2)	1.8 (2.2)
Eye, brain, and thyroid (C69-C75)	2.2 (2.7)	1.9 (2.4)	2.4 (3.0)	2.2 (2.8)	2.2 (2.9)	2.2 (2.8)
Hematopoietic (C81-C96)	6.8 (8.3)	6.7 (8.4)	6.6 (8.2)	6.6 (8.5)	6.0 (7.8)	6.5 (8.2)
All sites	82.4 (100.0)	79.7 (100.0)	80.2 (100.0)	77.4 (100.0)	76.9 (100.0)	79.2 (100.0)
BOTH SEXES						
Lip, oral cavity, and pharynx (C00-C14)	1.8 (2.1)	1.6 (1.9)	1.5 (1.7)	1.5 (1.8)	1.6 (2.0)	1.6 (1.9)
Digestive organs (C15-C26)	30.5 (34.8)	29.7 (34.7)	29.0 (34.0)	29.0 (34.6)	29.6 (35.2)	29.5 (34.7)
Respiratory organs (C30-C39)	15.0 (17.1)	14.9 (17.4)	14.6 (17.1)	14.3 (17.1)	15.0 (17.9)	14.7 (17.3)
Bone, cartilage, and skin (C40-C44)	0.5 (0.6)	0.4 (0.5)	0.4 (0.5)	0.5 (0.6)	0.3 (0.4)	0.4 (0.5)
Urinary organs (C64-C68)	2.6 (3.0)	2.5 (3.0)	2.6 (3.0)	2.5 (3.0)	2.6 (3.1)	2.6 (3.0)
Eye, brain, and thyroid (C69-C75)	2.3 (2.6)	2.0 (2.4)	2.3 (2.7)	2.4 (2.8)	2.4 (2.8)	2.3 (2.7)
Hematopoietic (C81-C96)	7.5 (8.6)	7.6 (8.9)	7.4 (8.7)	7.3 (8.8)	7.0 (8.3)	7.4 (8.7)
All sites	87.6 (100.0)	85.6 (100.0)	85.4 (100.0)	83.7 (100.0)	84.0 (100.0)	85.2 (100.0)

VENEZUELA (2003-2007)
Mortality per 100,000 by Age Group (years)
Males

SITE	ALL DEATHS	UNK AGE	0-4	5-9	10-14	15-19	20-24	25-29	30-34	35-39	40-44	45-49	50-54	55-59	60-64	65-69	70-74	75+	CRUDE RATE	ASMR (W)	CUM. RATE (0-74)†	Rank‡	ICD10
Lip, oral cavity, & pharynx (C00-14)	1125	0	0.1	0.0	0.0	0.1	0.1	0.2	0.2	0.3	1.0	2.6	4.1	7.2	8.8	12.9	17.5	20.9	1.7	2.3	0.3	9	C00-14
Oesophagus (C15)	941	0	.	.	.	0.0	0.0	.	0.1	0.2	0.4	1.5	3.3	4.7	7.4	10.7	17.7	25.4	1.4	2.0	0.2	11	C15
Stomach (C16)	5498	0	0.0	.	.	0.1	0.3	0.6	1.5	2.7	4.5	9.4	13.1	25.0	43.1	60.6	93.4	154.5	8.2	11.3	1.3	3	C16
Colon (C18)	2141	0	.	.	0.0	0.1	0.2	0.5	0.7	1.1	1.9	3.5	6.0	9.3	13.0	23.2	35.1	62.6	3.2	4.3	0.5		C18
Rectum (C19-C20)	0	0	0.0	0.0	0.0		C19-C20
Colorectal (C18-20)	0	0	0.0	0.0	0.0	23	C18-20
Rectum and anus (C19-21)	801	0	.	.	.	0.1	0.2	0.2	0.3	0.4	1.1	1.2	2.1	4.1	5.1	9.0	13.6	19.2	1.2	1.6	0.2		C19-21
Colon, rectum and anus (C18-21)	2942	0	.	.	0.0	0.1	0.4	0.6	1.1	1.6	2.9	4.7	8.2	13.3	18.1	32.2	48.7	81.8	4.4	6.0	0.7		C18-21
Liver (C22)	1900	0	0.2	0.1	0.1	0.1	0.3	0.2	0.5	0.5	1.6	3.3	5.4	9.2	13.9	22.3	30.3	49.2	2.8	3.9	0.4	4	C22
Gallbladder (C23-24)	447	0	.	.	.	0.0	0.0	0.1	0.0	0.2	0.3	0.5	1.3	2.0	2.8	4.6	8.0	14.7	0.7	0.9	0.1	15	C23-24
Pancreas (C25)	1567	0	.	.	.	0.1	0.1	0.1	0.3	0.6	1.0	3.0	4.7	8.7	10.1	17.1	26.4	43.1	2.3	3.2	0.4	6	C25
Nose, sinuses (C30-31)	0	0	0.0	0.0	0.0	23	C30-31
Larynx (C32)	1435	0	.	.	.	0.0	0.1	0.1	0.1	0.3	1.0	2.4	4.2	8.8	12.9	19.9	22.1	32.2	2.1	3.0	0.4	7	C32
Lung, trachea and bronchus (C33-34)	8382	0	0.1	0.0	0.1	0.3	0.4	0.5	0.8	2.2	6.6	16.7	30.2	44.6	70.9	101.4	137.2	187.1	12.5	17.3	2.1	2	C33-34
Melanoma of skin (C43)	251	0	.	.	.	0.0	0.0	0.1	0.1	0.3	0.3	0.7	0.6	0.9	2.1	2.3	3.2	6.3	0.4	0.5	0.1	17	C43
Mesothelioma (C45)	31	0	.	.	.	0.0	0.0	.	.	.	0.1	0.1	0.2	0.0	0.2	0.3	0.4	0.6	0.0	0.1	0.0	20	C45
Kaposi sarcoma (C46)	0	0	0.0	0.0	0.0	23	C46
Breast (C50)	0	0	0.0	0.0	0.0	23	C50
Penis (C60)	0	0	0.0	0.0	0.0	23	C60
Prostate (C61)	8859	0	.	.	0.1	0.1	0.1	0.2	0.2	0.2	0.6	1.7	5.1	15.6	38.2	88.8	179.3	493.6	13.2	18.7	1.7	1	C61
Testis (C62)	217	0	0.1	0.0	0.0	0.2	0.5	0.7	0.7	0.4	0.3	0.2	0.4	0.3	0.2	0.3	0.6	1.7	0.3	0.3	0.0	18	C62
Kidney (C64)	928	0	0.2	0.1	0.1	0.0	0.0	0.1	0.2	0.3	1.0	2.4	4.2	5.2	7.1	9.6	12.5	16.4	1.4	1.9	0.2	12	C64
Bladder (C67)	779	0	.	0.0	0.0	0.0	0.0	0.0	0.0	0.0	0.2	0.7	1.2	3.0	4.7	9.8	14.7	31.3	1.2	1.6	0.2	13	C67
Brain, CNS (C70-72)	1110	0	0.6	0.7	0.6	0.5	0.4	0.6	0.7	1.2	1.7	2.8	4.2	5.6	6.2	9.0	8.0	10.0	1.7	2.0	0.2	10	C70-72
Thyroid (C73)	155	0	0.0	.	.	0.0	.	0.0	0.1	0.0	0.1	0.2	0.3	0.7	0.7	2.0	3.1	4.6	0.2	0.3	0.0	19	C73
Hodgkin disease (C81)	342	0	0.0	0.1	0.1	0.3	0.3	0.5	0.5	0.3	0.6	0.4	0.9	1.7	1.8	2.7	2.8	3.1	0.5	0.6	0.1	16	C81
Non-Hodgkin lymphoma (C82-85,C96)	1481	0	0.4	0.5	0.5	0.8	0.7	0.7	0.9	1.4	1.8	3.2	4.0	5.6	9.6	11.7	18.0	25.3	2.2	2.8	0.3	8	C82-85,C96
Multiple myeloma (C88+C90)	601	0	.	.	.	0.0	.	0.0	0.0	0.2	0.6	1.1	2.4	3.5	5.1	7.3	10.0	12.0	0.9	1.2	0.2	14	C88+C90
Lymphoid leukaemia (C91)	0	0	0.0	0.0	0.0		C91
Myeloid leukaemia (C92-94)	0	0	0.0	0.0	0.0		C92-94
Leukaemia unspecified (C95)	0	0	0.0	0.0	0.0		C95
Leukaemia (C91-95)	2157	0	2.1	2.0	2.3	2.5	2.0	1.8	2.0	2.0	2.4	3.3	3.9	4.3	6.2	10.8	15.8	30.9	3.2	3.7	0.3	5	C91-95
All cancers but lung (C00-97/C33-34)	37673	0	4.8	4.2	4.7	7.0	7.3	8.7	12.3	16.8	28.2	53.3	84.7	145.2	224.7	375.2	594.9	1177.7	56.2	75.7	7.9		C00-97/C33-34
All sites (ALL)	46055	0	4.9	4.2	4.7	7.3	7.6	9.2	13.2	18.9	34.7	70.0	114.9	189.9	295.5	476.5	732.1	1364.9	68.7	93.0	9.9		ALL

UNK, Unknown; ASMR (W), Age Standardized Mortality Rate (World Population); CUM., Cumulative

†Percent

‡Rank based on highest ASMR excluding: All sites but lung and All sites

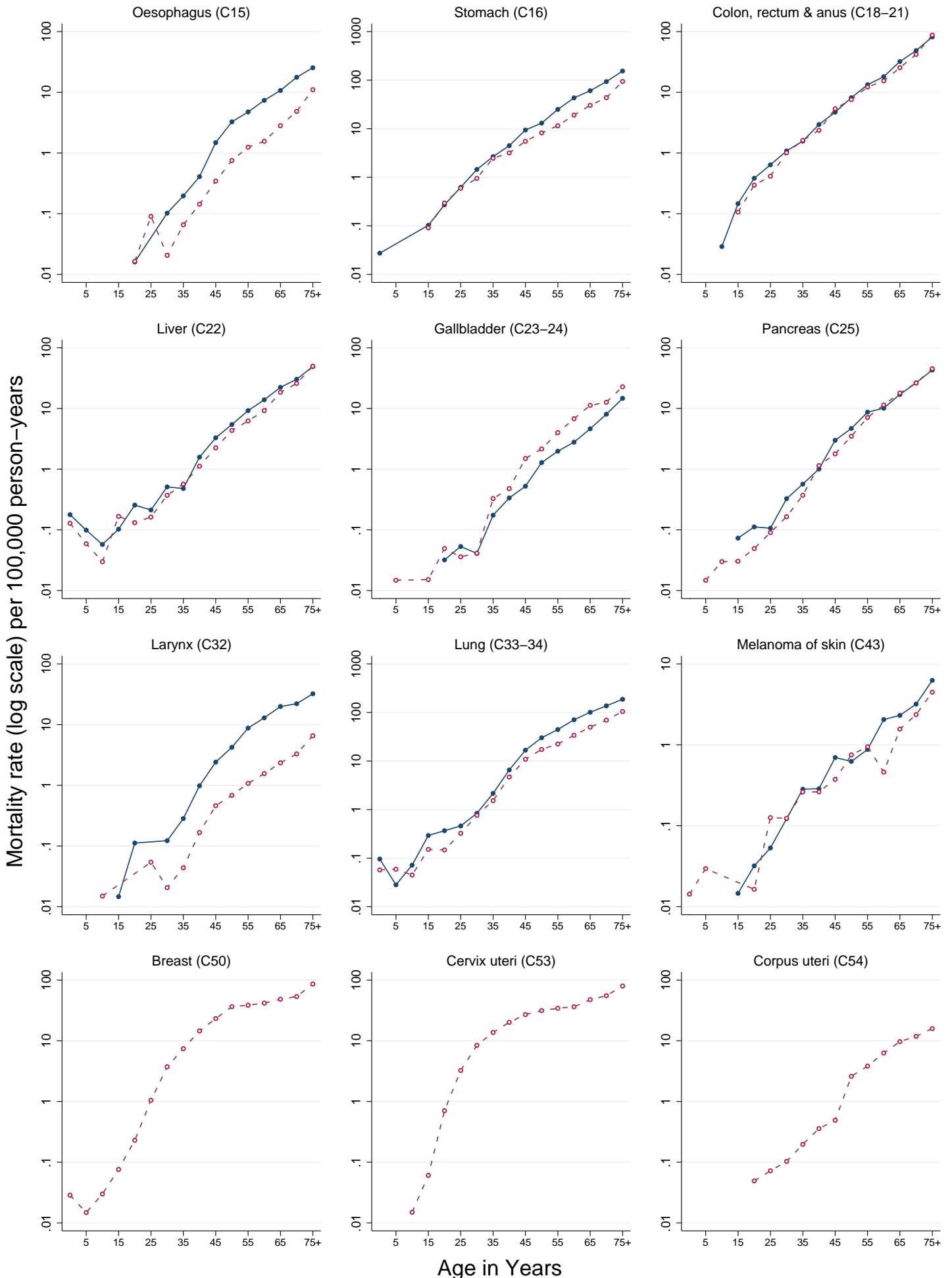
VENEZUELA (2003-2007)
Mortality per 100,000 by Age Group (years)
Females

SITE	ALL DEATHS	UNK AGE	0-4	5-9	10-14	15-19	20-24	25-29	30-34	35-39	40-44	45-49	50-54	55-59	60-64	65-69	70-74	75+	CRUDE RATE	ASMR (W)	CUM. RATE (0-74)†	Rank‡	ICD10
Lip, oral cavity, & pharynx (C00-14)	558	0	.	0.0	0.0	0.1	0.1	0.1	0.2	0.3	0.3	1.0	1.1	1.5	2.8	4.1	7.8	16.4	0.8	1.0	0.1	15	C00-14
Oesophagus (C15)	337	0	.	.	.	0.0	0.1	0.1	0.0	0.1	0.1	0.3	0.8	1.2	1.6	2.8	4.8	11.0	0.5	0.6	0.1	17	C15
Stomach (C16)	3453	0	.	.	0.1	0.3	0.6	0.9	2.5	5.5	3.2	5.5	8.2	11.5	19.1	30.4	43.7	94.2	5.2	6.1	0.6	4	C16
Colon (C18)	2379	0	.	.	0.1	0.2	0.3	0.7	1.2	1.8	3.6	5.2	8.9	11.4	19.2	33.4	69.6	3.6	4.2	0.4		C18	
Rectum (C19-C20)	0	0	0.0	0.0	0.0		C19-C20
Colorectal (C18-20)	0	0	0.0	0.0	0.0	24	C18-20
Rectum and anus (C19-21)	760	0	.	.	0.0	0.1	0.1	0.1	0.3	0.5	0.6	1.8	2.4	3.4	4.0	6.3	8.8	18.1	1.1	1.3	0.1		C19-21
Colon, rectum and anus (C18-21)	3139	0	.	.	0.1	0.3	0.4	1.0	1.6	2.4	5.4	7.6	12.2	15.5	25.4	42.1	87.7	4.7	5.5	0.6		C18-21	
Liver (C22)	1796	0	0.1	0.1	0.0	0.2	0.1	0.2	0.4	0.6	1.1	2.2	4.3	6.2	9.2	18.5	25.9	49.6	2.7	3.2	0.3	5	C22
Gallbladder (C23-24)	941	0	.	0.0	0.0	0.0	0.0	0.0	0.3	0.5	1.5	2.2	4.0	6.8	11.3	12.7	22.8	1.4	1.7	0.2	10	C23-24	
Pancreas (C25)	1702	0	.	0.0	0.0	0.0	0.0	0.1	0.2	0.4	1.1	1.8	3.5	7.1	11.4	17.9	26.3	45.2	2.6	3.1	0.3	7	C25
Nose, sinuses (C30-31)	0	0	0.0	0.0	0.0	24	C30-31
Larynx (C32)	252	0	.	.	0.0	.	0.1	0.0	0.0	0.2	0.5	0.7	1.1	1.6	2.3	3.3	6.6	0.4	0.5	0.0	19	C32	
Lung, trachea and bronchus (C33-34)	5065	0	0.1	0.1	0.0	0.2	0.1	0.3	0.8	1.5	4.7	10.9	17.3	22.5	33.9	49.9	69.7	104.9	7.6	9.3	1.1	3	C33-34
Melanoma of skin (C43)	208	0	0.0	0.0	.	0.0	0.1	0.1	0.1	0.3	0.3	0.4	0.8	0.9	0.5	1.6	2.4	4.5	0.3	0.4	0.0	21	C43
Mesothelioma (C45)	30	0	0.1	0.1	0.3	0.2	0.1	0.7	0.5	0.0	0.1	0.0	22	C45
Kaposi sarcoma (C46)	0	0	0.0	0.0	0.0	24	C46
Breast (C50)	6998	0	0.0	0.0	0.0	0.1	0.2	1.0	3.7	7.4	14.5	23.2	36.5	38.6	41.8	48.4	53.7	86.3	10.6	12.3	1.3	2	C50
Cervix uteri (C53)	7610	0	.	.	0.0	0.1	0.7	3.2	8.4	13.7	20.2	27.1	31.4	34.3	36.4	47.7	55.3	79.9	11.5	13.0	1.4	1	C53
Corpus uteri (C54)	779	0	.	.	.	0.0	0.0	0.1	0.1	0.2	0.4	0.5	2.6	3.8	6.3	9.7	11.8	15.9	1.2	1.5	0.2	12	C54
Ovary (C56)	1795	0	0.0	0.1	0.1	0.2	0.3	0.5	1.1	1.7	2.5	5.3	7.4	8.1	11.7	16.5	18.5	23.3	2.7	3.2	0.4	6	C56
Kidney (C64)	591	0	0.3	0.2	0.1	0.1	0.0	0.3	0.1	0.2	0.6	1.1	2.1	1.9	3.7	6.0	6.2	11.0	0.9	1.1	0.1	13	C64
Bladder (C67)	410	0	.	.	.	0.0	0.0	0.0	0.0	0.2	0.2	0.4	0.8	1.9	1.6	2.6	4.7	15.4	0.6	0.7	0.1	16	C67
Brain, CNS (C70-72)	935	0	0.3	0.5	0.5	0.3	0.5	0.5	0.6	1.1	1.4	1.7	3.0	3.8	5.8	6.4	7.4	10.3	1.4	1.6	0.2	11	C70-72
Thyroid (C73)	321	0	0.0	.	.	0.0	.	.	0.1	0.1	0.2	0.6	0.5	1.3	2.3	3.1	4.9	8.0	0.5	0.6	0.1	18	C73
Hodgkin disease (C81)	257	0	.	0.0	0.0	0.2	0.4	0.4	0.4	0.2	0.5	0.2	0.8	0.9	1.4	1.3	1.4	3.1	0.4	0.4	0.0	20	C81
Non-Hodgkin lymphoma (C82-85,C96)	1135	0	0.2	0.2	0.2	0.3	0.6	0.6	0.9	0.7	1.5	1.4	3.2	4.7	5.3	9.8	12.4	20.2	1.7	2.0	0.2	9	C82-85,C96
Multiple myeloma (C88+C90)	556	0	0.0	.	.	0.0	0.0	0.0	0.0	0.2	0.5	0.9	1.9	3.1	4.5	6.5	8.5	8.9	0.8	1.0	0.1	14	C88+C90
Lymphoid leukaemia (C91)	0	0	0.0	0.0	0.0		C91
Myeloid leukaemia (C92-94)	0	0	0.0	0.0	0.0		C92-94
Leukaemia unspecified (C95)	0	0	0.0	0.0	0.0		C95
Leukaemia (C91-95)	1897	0	1.8	1.7	2.0	2.1	1.8	1.5	1.6	1.5	2.4	2.7	3.6	5.2	6.6	7.7	13.3	21.2	2.9	3.1	0.3	8	C91-95
All cancers but lung (C00-97/C33-34)	39915	0	3.6	3.4	3.9	5.0	6.5	11.5	21.8	36.1	68.4	91.1	134.3	168.2	215.4	310.8	416.7	739.6	60.2	70.0	7.4		C00-97/C33-34
All sites (ALL)	44980	0	3.6	3.5	4.0	5.2	6.6	11.9	22.6	37.6	63.1	102.0	151.6	190.7	249.3	360.8	486.4	844.4	67.8	79.2	8.5		ALL

UNK, Unknown; ASMR (W), Age Standardized Mortality Rate (World Population); CUM., Cumulative †Percent ‡Rank based on highest ASMR excluding: All sites but lung and All sites

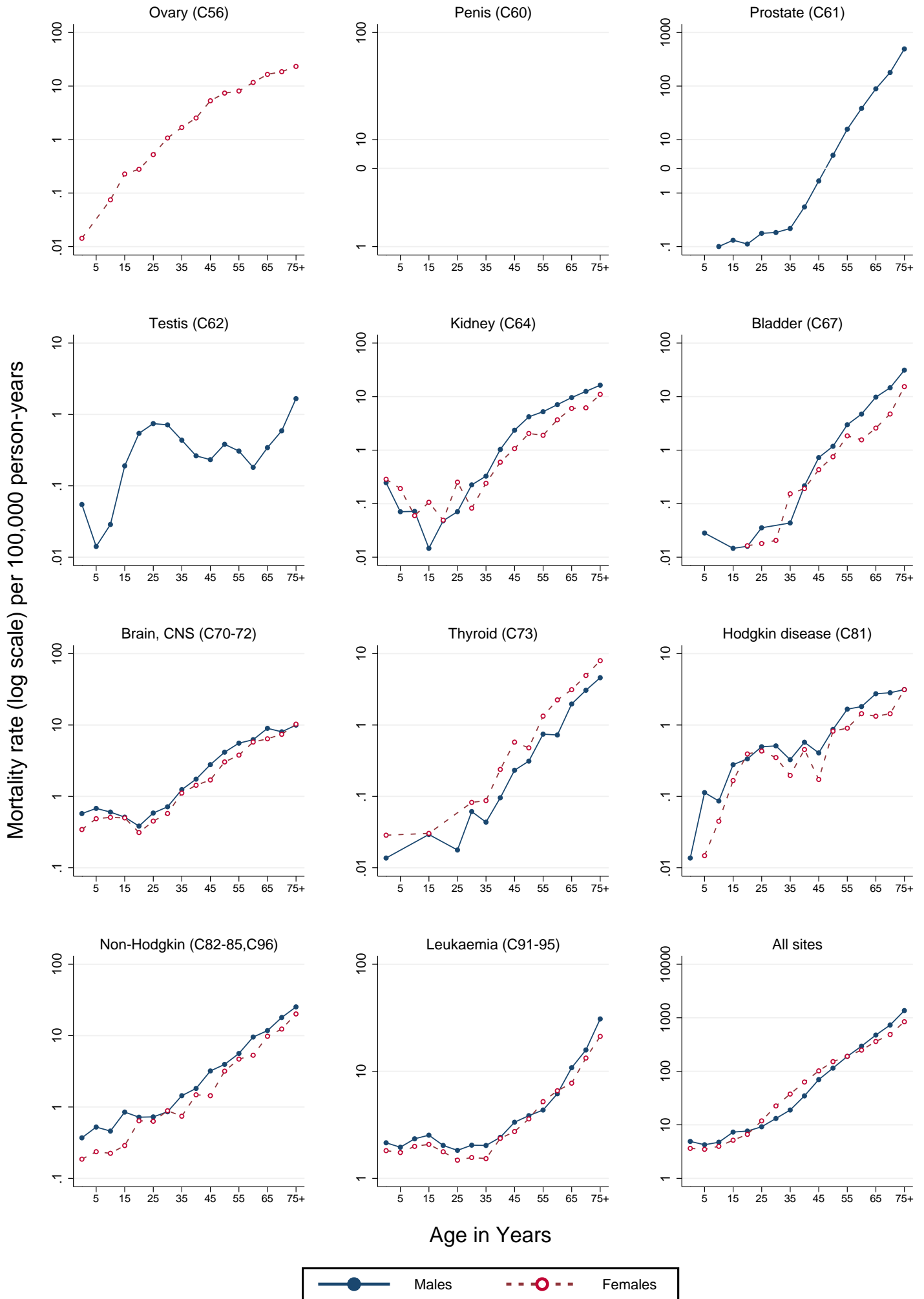
VENEZUELA (2003–2007)

Age-specific mortality rates per 100,000 person-years



VENEZUELA (2003-2007)

Age-specific mortality rates per 100,000 person-years



VENEZUELA* (2003-2007)

Average annual person-years

